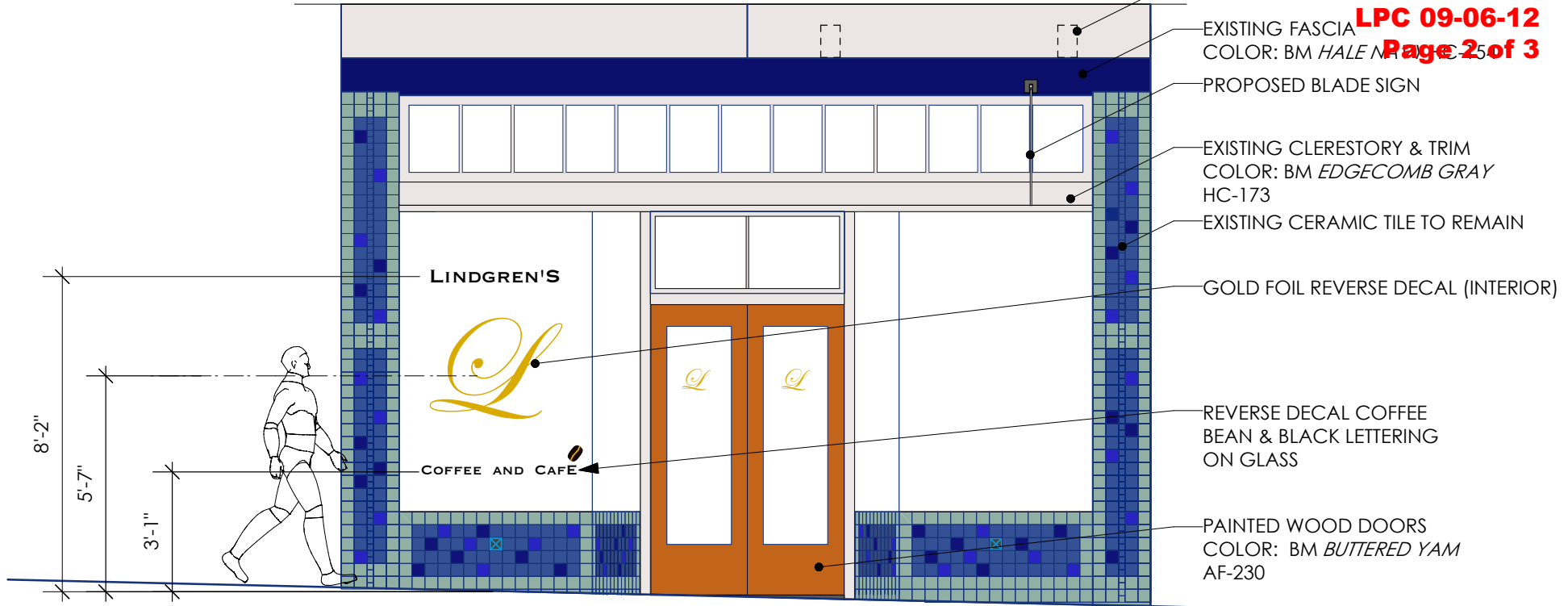


LINDGREN'S COFFEE & CAFE  
**TENANT IMPROVEMENT**  
 2120 Dwight Way, Berkeley, CA

**PROPOSED BLADE SIGN - REVISED**  
**1" = 1'-0"**  
 7.27.2012

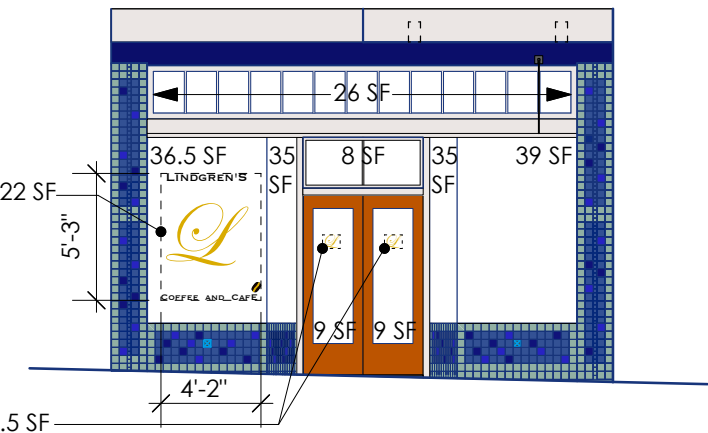
**ALEXANDRA  
 ODABACHIAN  
 architect**

1131 Post Street, Alameda, CA 94501  
 Phone (510)207-2332  
 caoarchitect@earthlink.net



FRONT ELEVATION & SIGNAGE

1/4" = 1'-0"



GLAZING & SIGNAGE CALCULATIONS

1/8" = 1'-0"

GLAZING TOTAL = 197 SF  
PROPOSED WINDOW SIGNAGE = 23 SF

15% OF 197 SF = 29.55 SF  
PROPOSED SIGNAGE < 29.55 SF

LINDGREN'S COFFEE & CAFE  
**TENANT IMPROVEMENT**  
2120 Dwight Way, Berkeley, CA

**PROPOSED SIGNAGE & GLAZING CALCULATIONS - B.Y.**

1/4" = 1'-0"

7.27.2012

**ALEXANDRA  
ODABACHIAN  
architect**

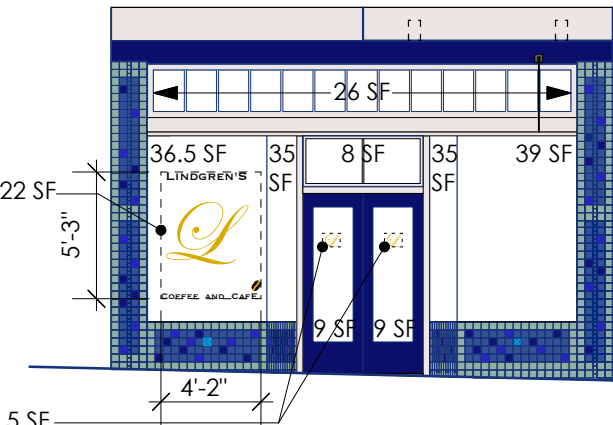
1131 Post Street, Alameda, CA 94501

Phone (510)207-2332

caoarchitect@earthlink.net



**FRONT ELEVATION & SIGNAGE**  
 1/4" = 1'-0"



**GLAZING & SIGNAGE CALCULATIONS**  
 1/8" = 1'-0"

GLAZING TOTAL = 197 SF  
 PROPOSED WINDOW SIGNAGE = 23 SF

15% OF 197 SF = 29.55 SF  
 PROPOSED SIGNAGE < 29.55 SF

LINDGREN'S COFFEE & CAFE  
**TENANT IMPROVEMENT**  
 2120 Dwight Way, Berkeley, CA

**PROPOSED SIGNAGE & GLAZING CALCULATIONS - H.M.**  
 1/4" = 1'-0"  
 7.27.2012

**ALEXANDRA  
 ODABACHIAN  
 architect**

1131 Post Street, Alameda, CA 94501  
 Phone (510)207-2332  
 caoarchitect@earthlink.net