

CREATE A NEIGHBORHOOD MAP

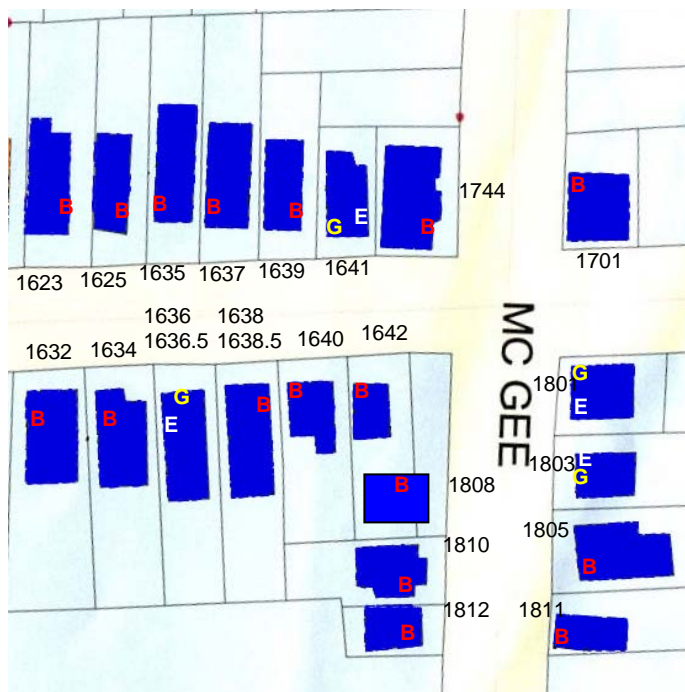
Having a neighborhood map is critical to being able to shut off utilities in an emergency, such as a gas leak or a house fire. Knowing where the utility shutoff valves and switches are located in advance can save time.

Below are some ways to get started with building a neighborhood map:

1. Go to the City Records office and get a copy of the plat map for your neighborhood. Or visit the City of Berkeley Maproom website and use the [Parcel Condition and Permit History](#) tool to obtain a map of your area. From this, you can use any graphics program to make a simple cartoon diagram of your group's structures.
2. Use Google Maps in map mode to get the general layout of the neighborhood and property lines. Use the satellite mode to see the actual structure footprints, similar to the plat map in #1 above. Use any graphics program to make a simple cartoon diagram of your group's structures.
3. Another resource to check out is the [Map Your Neighborhood](#) website.

Once you have a cartoon map of your neighborhood, indicate the addresses for each property. Make sure you annotate multiple addresses for multiple units. Using volunteers to help, survey all the structures in your group to find the gas shutoff valves, electrical shutoff panels, and water shutoff valves for each structure. Annotate these locations on your cartoon map. Print a copy of this map and keep it with your neighborhood roster, usually with your emergency supplies or the group's supply cache (if applicable).

When your group's search and rescue teams are searching the neighborhood to find people in distress, they will already have the locations of the utility shutoffs to turn off all utilities prior to entering any structure. This lowers the risk to the rescuers while they are inside the structures.



- Property lines and house shapes annotated
- Addresses listed for all structures
- Gas (G) and electric (E) shutoffs labeled, or B for Both in the same location