



Berkeley Police Department

Collaboration with the Berkeley Unified School District



BPD Recommendations to BUSD

- Close the BHS Campus
- Improve the BUSD School Security Program
- Additional School Resource Officers (SRO)
- Require Visible School-Specific Identification
- Increase Attention and Support for Highest Risk Students

BPD Initiatives and Collaboration with BHS and BUSD

- Conducted Table Top Exercise with BHS Administration
- One SRO added on Monday at BHS
- Proposed Truancy Reduction Initiative
- Recommended DOJ “Security Our Schools” Grant Opportunity

A large, semi-transparent watermark of the Berkeley Police badge is centered on the page. The badge is shield-shaped with a yellow border and contains the text 'BERKELEY' at the top, a five-pointed star in the center, and 'POLICE' at the bottom.

BERKELEY
Crime Report

Captain Cynthia Harris

Crime Analysis - Definitions

Crime Trend: Long-term increases and decreases in crimes or changes in the characteristics of a crime over a period of time

Crime Pattern: A group of similar offenses in a defined geographic area in a particular time period

Crime Series: A crime pattern where there is reason to believe the same person or persons committed the crimes

Crime Spree: A group of the same crimes committed almost at the same time, by the same person

Hot Spot: A location where a variety of crimes keep occurring over an extended period of time

Part One Crime - Defined

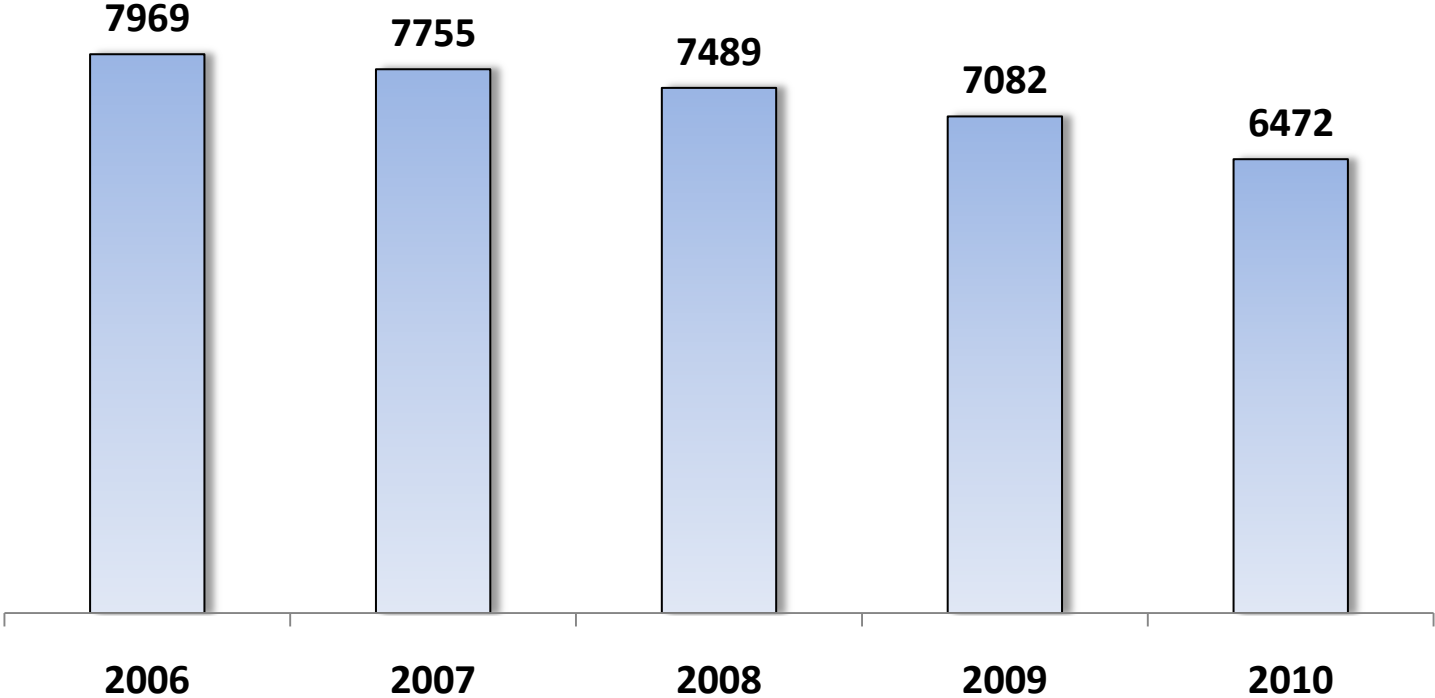
Part One Crime - Serious crimes tracked by the FBI in the Uniform Crime Reports since the 1930's. They are considered some of the most serious violent crimes and property crimes. The UCR tracks the following part one crimes:

Violent Crimes – Murder, Rape, Robbery, Aggravated Assault

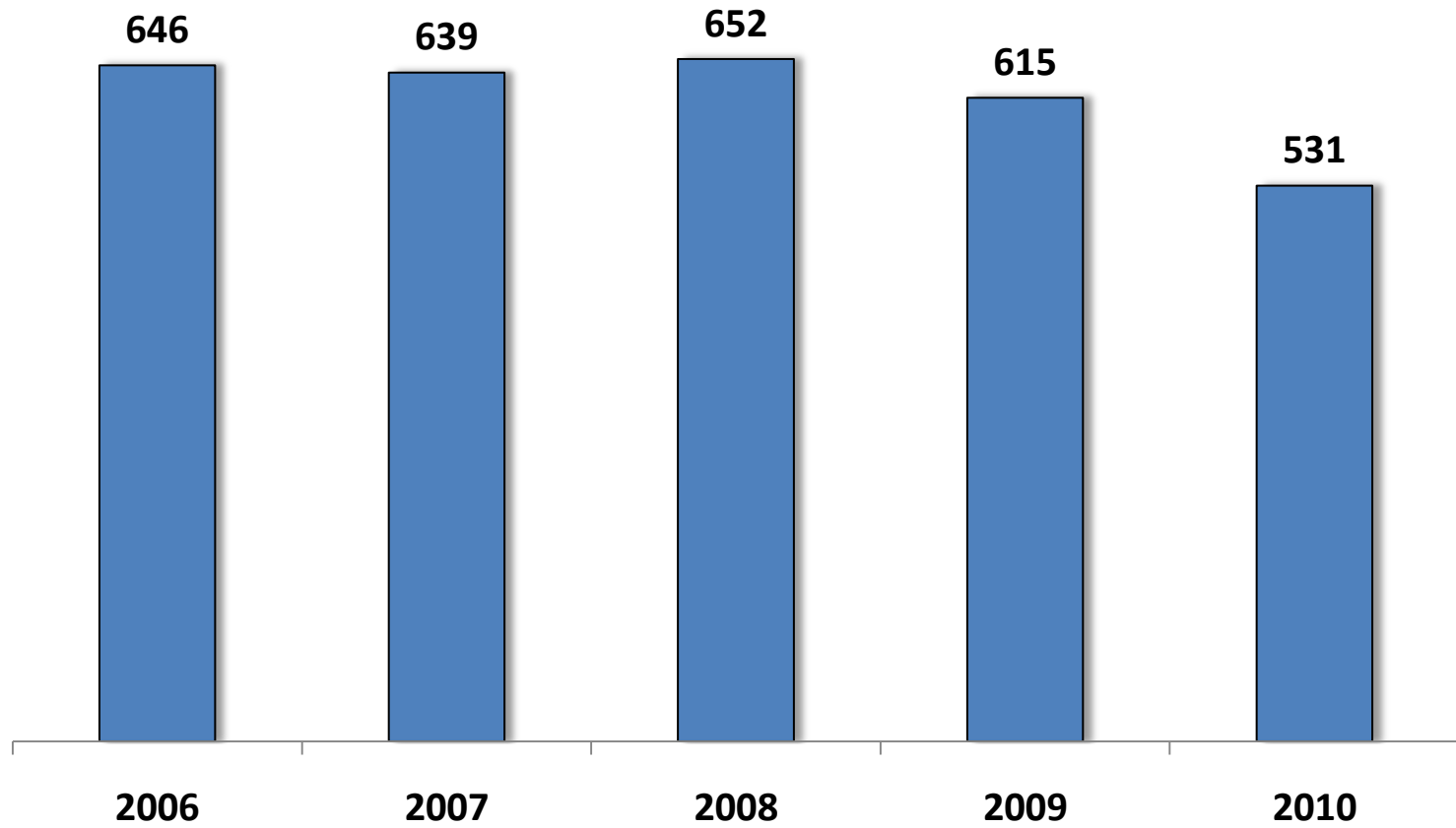
Property Crimes – Burglary, Larceny (grand theft, auto burglary, and petty theft), Motor Vehicle Theft

Arson – Tracked separately from Violent Crimes and Property Crimes

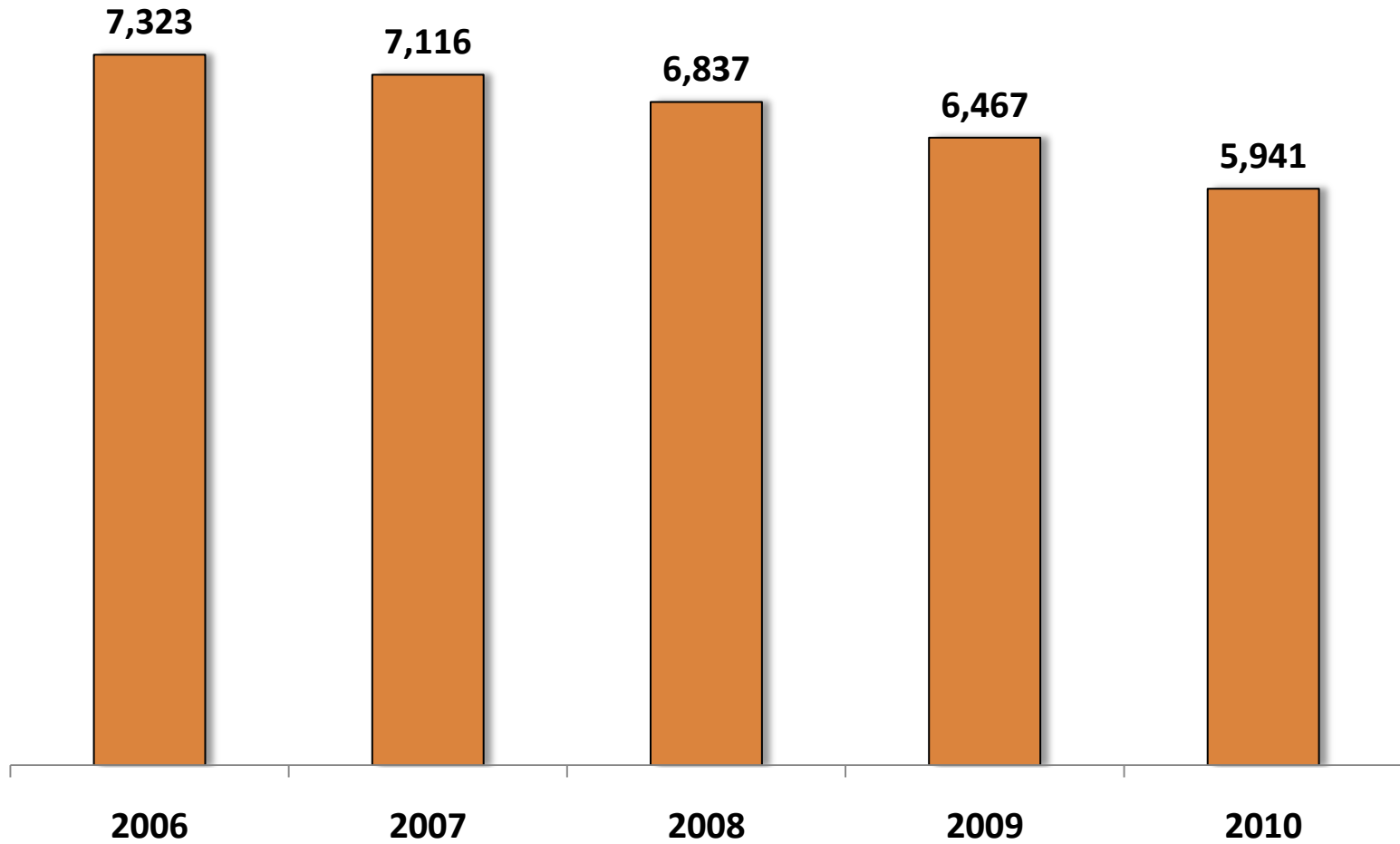
Part One Crime 2006-2010



5 Year Crime Trends - Violent Crime



5 Year Crime Trends - Property Crime



Total Part One Crime Comparison 2009 to 2010

	2009	2010	Change	% Change	
Total Violent	615	531	84	-14%	↓
Total Property	6467	5941	526	-8%	↓
Total	7082	6472	606	-9%	↓



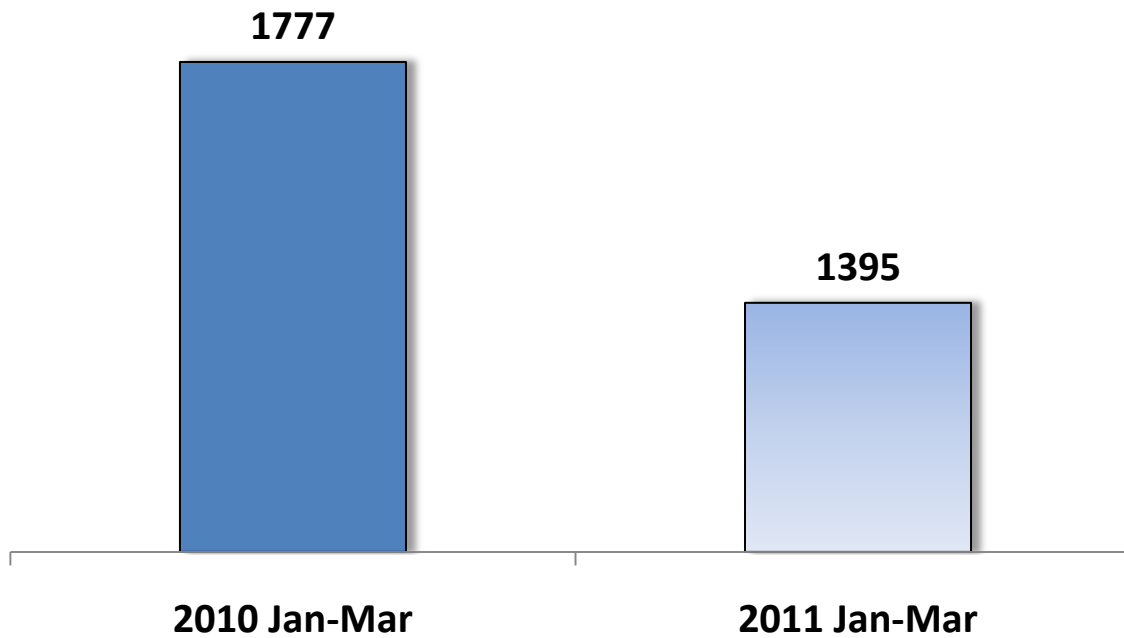
BERKELEY

2011 Crime Report

January – March 2011

POLICE

Total Part One Crime January - March 2011



All Part One Crime

January-March 2010 with January-March 2011

	2010 Jan-Mar	2011 Jan-Mar	Change	% Change	
Total Violent	114	115	1	1%	↑
Total Property	1658	1272	386	-23%	↓
Arson	5	8	3	60%	↑
Total	1777	1395	382	-21%	↓

Violent Crime January-March 2010 with January-March 2011

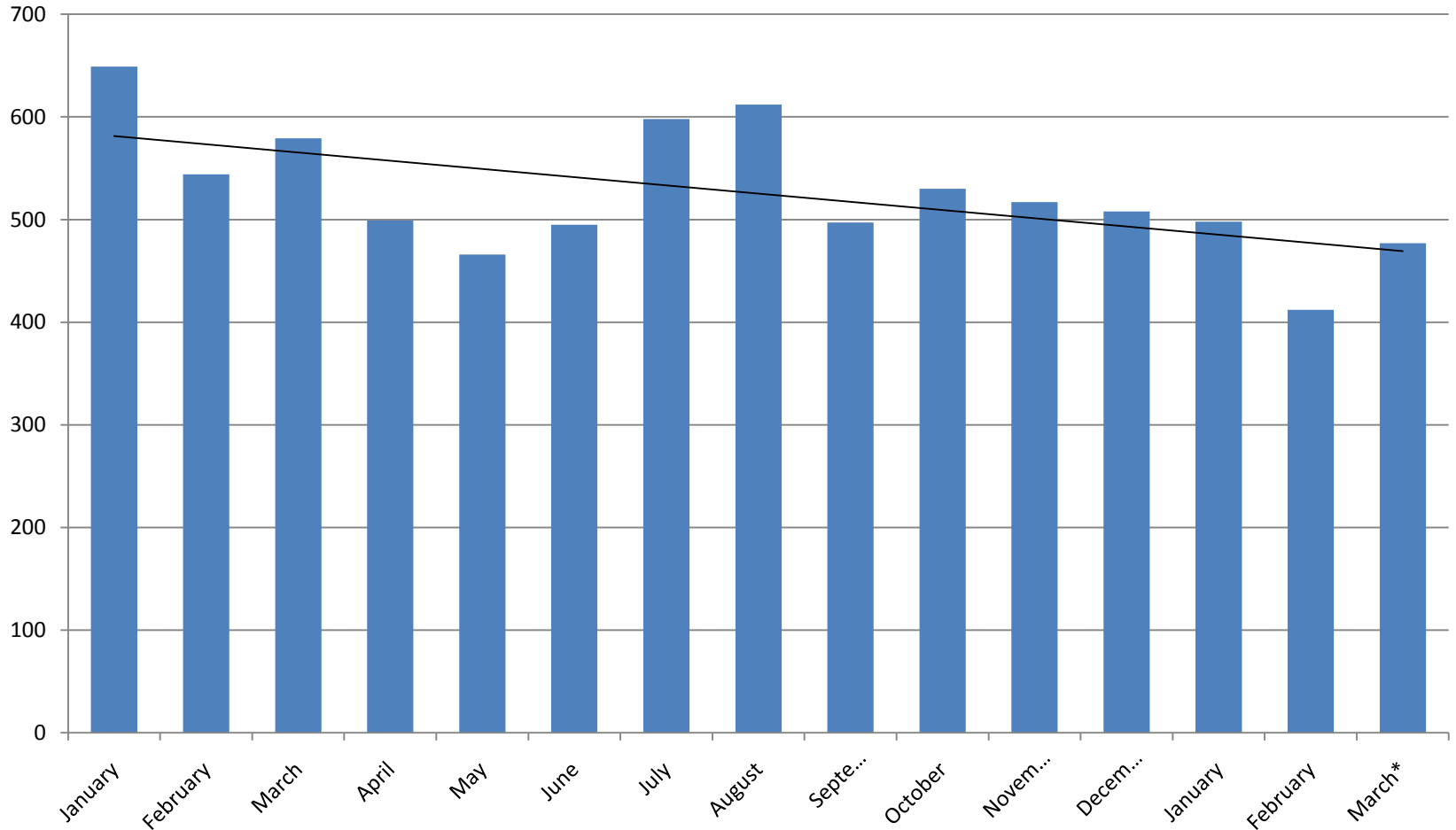
	2010 Jan-Mar	2011 Jan-Mar	Change	% Change	
Homicide	1	1	0	0	
Rape	6	5	-1	-17%	↓
Robbery	64	79	15	24%	↑
Agg Assault	43	30	-13	-5%	↓
Total Violent	114	115	1	1%	↑

Property Crime January-March 2010 with January-March 2011

	2010 Jan-Mar	2011 Jan-Mar	Change	% Change	
Burglary	277	252	-25	-9%	↓
Larceny	1205	852	-353	-29%	↓
Auto Theft	171	160	-11	-6%	↓
Arson	5	8	3	60%	↑
Total Property	1658	1272	-386	-23%	↓

15 Month Part One Crime Trend

January 2010 to March 2011

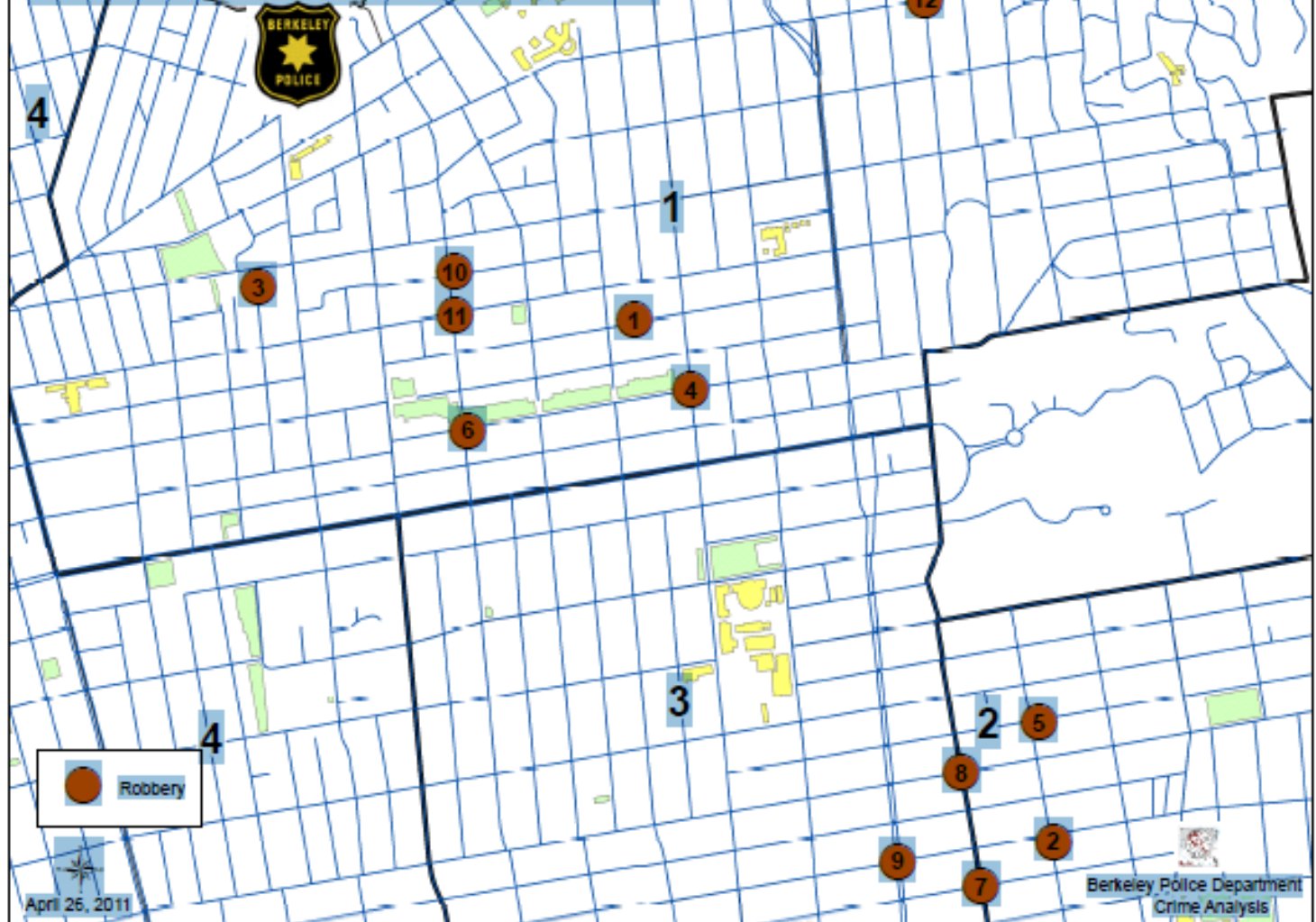


Crime Series of Interest

Silver Revolver Series

- Suspects captured by Operations Division following a pedestrian robbery.
- Follow up investigation revealed suspects committed multiple robberies in San Leandro, Oakland and San Francisco.
- Suspect charged in twelve Berkeley robberies, multiple robberies in other cities based on Berkeley Police Department arrests.

2010 Silver Revolver Series



Crime Series of Interest

Juvenile Burglary Series

- Two separate series involving groups of juveniles committing daytime residential burglaries.
- Over 21 burglaries related to one group of 5 juveniles.
- Over 17 burglaries related to a second group of 5 juveniles.

New World System Project Update

Lieutenant Andy Greenwood

An integrated suite of public safety software affecting virtually every work unit in the Police Department

- **Milestones**

- **April 2009: CAD/Mobile “Go-Live”**
- **August 2010: Records “Go-Live”**
- **March 2011: Field Reporting “Go-Live”**

- **Public Safety Benefits**

- **Improved workflow processes**
- **Rapid access to reports**
- **Data accuracy improved**
- **Expanded Reporting capabilities**

CITY OF BERKELEY COMMUNITY AREA COMMANDERS

AREA #4
LT. DAVE FRANKEL, L7
510 981-5792
dfrankel@cityofberkeley.info

Ofc. Karen Buckheit #135
510 981-5774

AREA #1
SGT. MIKE DOUGHERTY, S26
510 981-5796
mdougherty@cityofberkeley.info

Ofc. Byron White #17
510 981-5773

AREA #2
LT. ANDY GREENWOOD, L3
510 981-5795
agreenwood@cityofberkeley.info

Ofc. Jessyca Nabozny #118
510 981-5778

AREA #3
LT. RANDY FILES, L8
510 981-5794
rfiles@cityofberkeley.info

Ofc. Amber Phillips #90
510 981-5772

