

## Jacopo Montalenti

776 Bush Street, APT #406  
94108, SAN FRANCISCO (CA)  
Cell. (415) 532 6232

### EDUCATION:

- Harvard School of Design – Executive Education – Daylighting Building, Diva for Rhino (2013)
- Polytechnic University of Milan, Italy – Bachelor 5 year program, Architecture (October 2005)
- Kungliga Teckniska Hogskolan Architect, Stockholm, Sweden - Exchange Student (2003)
- LEED Green Associate (2012)
- Certification 5SRW (<http://www.learnvray.com/>) (2014)
- Completed Mastering Vray course (<http://masteringcggi.com.au/>) (2015)

### SOFTWARE EXPERTISE:

- TECHNICAL DRAWINGS
  - o Autocad 2016 2d & 3d – Revit 2016 – Rhinoceros
  - o Energy Pro 6.7 + Calcerts Certification (title 24 certification)
  - o Right-Suite & Cool Calc - manual J calculation
  - o Diva for Rhino (<http://diva4rhino.com/>) - daylighting software analysis
- 3D RENDERING
  - o 3Dmax – Vray 3.2 (experimented with Octane & Corona)
  - o ForestPro, RailclonePro, growFX
  - o Photoshop & complete adobe suite including, InDesign, illustrator, flash, etc...
- 3D PRINTING
  - o 3d printing since 2014 – Makergear M2
  - o nozzle 0.25 – 0.35 – 0.5 for PLA-ABS-PTEG-WOOD(PLA) and other materials
  - o Set up Octo-print on raspberry-Pi for online printing (including wi-fi/camera/led lights)
  - o Slicer - Simplify3d
- OTHERS
  - o Microsoft Office Suite (Word,Excel,PowerPoint)
  - o Adobe Acrobat & Bluebeam

### EXPERIENCE

FONG & CHAN ARCHITECTS - San Francisco, CA – **SENIOR ARCHITECT** (OCTOBER 2006 – Present)

- **MUSEUM** De young Memorial Museum (closing documents 2006)
- **HOSPITAL WHHS** (Masterplan - Central plan, CJR & main building 2006-2010)
- **ASSISTED LIVING** The Sequoias, NCPHS (small to medium size renovations 2006 ongoing)
- **UNIVERSITY +LABS.** University of Pacific Biological Sciences Building (CD 100% - 2008-2011)
- **HOSPITAL** San Francisco General Hospital (from SD to CA 2010-on going to be complete in 2016)
- **HOTEL+RESIDENCE** Raintree boutique and Residences Hotel, Manila (Schematic Design - 2011)
- **PRIVITE CLINIC** Lathrop Post-Acute Recovery Center (CD 50% 2012 - project on hold)
- **HOSPITAL** Women & Children Hospital, Ho Chi Minh City, Vietnam (Schematic design - 2012)
- **AIRPORT** San Francisco International Airport Terminal 2 (Schematic Design - 2013 on hold)
- **OFFICE** - Code consultant for Apple new Campus (Code Consultant - 2013 ongoing)
- **HOSPITAL** - Surgical Suite Renovation VA Palo Alto (CD 100% - 2014 ongoing)

TESTUDO STUDIO - San Francisco, CA - **PRINCIPAL** (2012 – Present):

- Projects:
  - o Private House in Tuscany Italy – Completed (2012-2014)
  - o Private House in Thousand Oak California – Under construction (2014-ongoing)
  - o Private House in Bay Area California – design phase (2015-ongoing)
- Competitions:
  - o WWI memorial in Washington (2014)
  - o Private House, England (2015)
  - o Library in Varna, Bulgaria (2015)
  - o Restaurant/Café/Conference Center, Liepaja-Latvia (2015)
  - o Japan Tokyo – Pop Cultural Center (2016)
  - o Russia Novosibirsk – Museum (2016) – **SHORT LISTED Nov. 2016**

CR+ST ARCHITETTI ASSOCIATE – Milano, ITALY – **JUNIOR ARCHITECT** (2004-2005)

- **COMMERCIAL** Kalliste' Showroom, Milano downtown -2004
- **EXPO Temp. Building** Hannover Cebit -2004
- **COMMERCIAL** Spark Boutique, Milano downtown – 2005
- **EXPO Temp. Building** Hannover Cebit -2005

ARCH. MARCO BIANCHI, Milano ITALY – **INTERSHIP** (2004)

ARCH. ISABELLA COCCHI, Milano ITALY – **INTERSHIP** (2002)

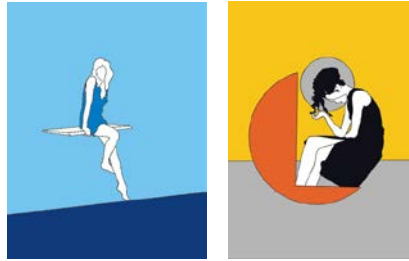
ARCH. STEFANO TESSERA, Milano ITALY – **INTERSHIP** (2001)

SEMINAR HELD:

- 3D PRINTING – (2015)
  - o SLS (industrial process) - FDM (consumer) - SLA (consumer)
  - o All about Slicer (Simplify3D & others)
  - o Filament PLA vs PTEG vs ABS & (test comparison 5 different wood-PLA)
  - o New technology CLIP (Continuous Liquid Interface Production)
- WIND POWER NEW TECHNOLOGIES – (2014)
  - o Bladeless Wind turbine
  - o Micro Vertical-Axis Turbine
  - o Flutter oscillation belt
  - o Piezoelectricity & Wind
- ARCHITECTURAL RENDERING (VRAY) - (2014)
  - o Basic concept of 3d visualization
  - o What's new – Vray, Corona, Octane
  - o Vray online courses (learnvray– masteringcggi- 2gacademy– Udemy A.Zollinger)
  - o Vray Resources
- DIMENSIONING SOLAR PANEL FROM A TO Z – (2013)
  - o average use of electricity per family worldwide vs USA
  - o average solar insolation
  - o solar panel efficiency
  - o solar panel tilt & orientation
- GREEN ROOF TECHNOLOGY & REGULATION IN USA – (2013)
  - o Guidelines and Maintenance
  - o Benefits, Design and Implementation
  - o Details
  - o FLL standard (German Standards)

## PERSONAL ART

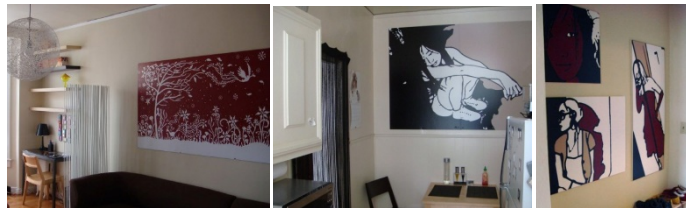
- 1994-2000 Clean Art Manifesto <http://xoomer.virgilio.it/jacopomo/page5.html>
- 2001 Collective Exhibition 2 Paintings (Milan-Italy)



- 2002 Collective Exhibition 2 Paintings (Tokyo-Japan)

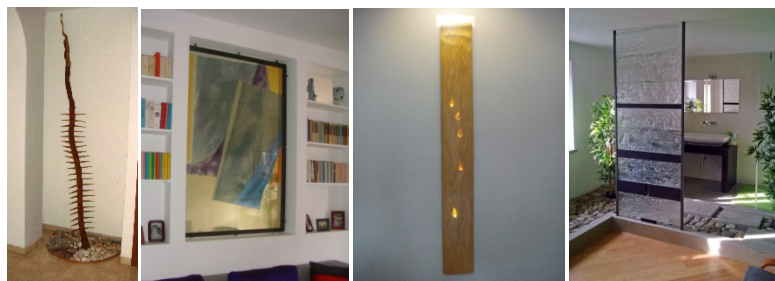


- 2006-2016 San Francisco



## PRIVATE PROJECTS – Art Collaborations

- 1996 - Collaboration with Vittorio Sironi <http://www.tattodesignstudio.com/>  
Private Residence (Milano - Italy)
- 1996 – Collaboration with Franco Bianchetti [www.santhome.it](http://www.santhome.it)  
Private Residence (Milano - Italy)
- 1998 – Collaboration with Vittorio Sironi <http://www.tattodesignstudio.com/>  
Private Residence (Milano - Italy)
- 2011 – Collaboration with Franco Bianchetti [www.santhome.it](http://www.santhome.it)  
SPA (Santa Fiora - Italy)



## PUBLIC PROJECTS – Collaborations/Consultant

### 2012-2013 COLLABORATION - Anna Valentina Murch <http://annavalentinamurch.com/>

- 2012 – ARCHIPELAGO (San Francisco)

<http://www.sfartscommission.org/pubartcollection/pubart-projects/2016/05/23/general-hospital/>



- 2013 – BLE 9th Street Station (Charlotte)

<http://charlottenc.gov/cats/transit-planning/art-in-transit/current-projects/Pages/ble-9th-street-station.aspx>



- 2013 – CLOUD GROVE (Arlington)

[http://www.arlingtonparks.us/docs/LBP\\_Design\\_Guidelines\\_11-19-2013%20-%20Compressed.pdf](http://www.arlingtonparks.us/docs/LBP_Design_Guidelines_11-19-2013%20-%20Compressed.pdf)



### 2010-2016 CONSULTANT - San Francisco General Hospital

Active as project Architect at FCA to coordinate and consult various artist selected by the art commission (<http://www.sfartscommission.org/pubartcollection/pubart-press-releases/2010/06/30/arts-commission-announces-general-hospital-public-art-project-artists/>) to successfully integrate their art in our building.

*Cliff Garten, Anna Valentina Murch, Tom Otterness, Paul Kos, Rupert Garcia, Jetro Martinez, Lena Wolff, Mildred Howard, Stephen Galloway, Nancy Blum, Julio Cesar Morales, Arthur Stern, Alan Masaoka, Masayuki Nagase* (<http://www.sfartscommission.org/pubartcollection/pubart-projects/2016/05/23/general-hospital/>)

