



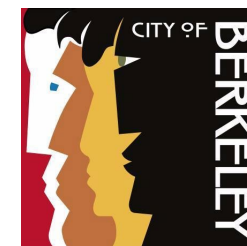
*City of Berkeley*

# WATERFRONT BIKE PARK

Final Concept Design

**Final Community Workshop**

*April 4, 2023*





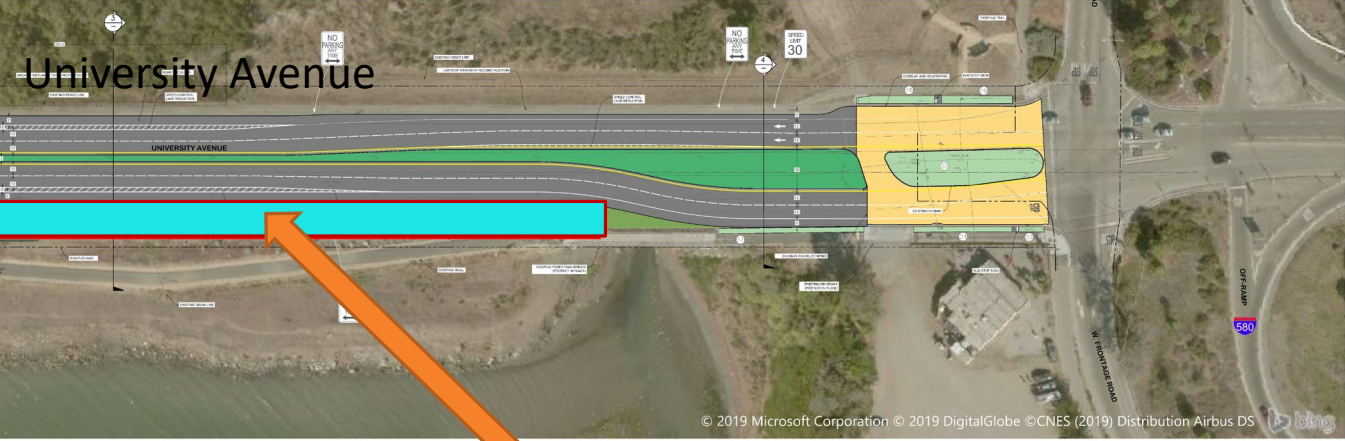
# AGENDA

- Project Overview
- Preferred Riding Features
- Preferred Site Amenities
- Open Discussion
- Next Steps





**EXISTING SITE**



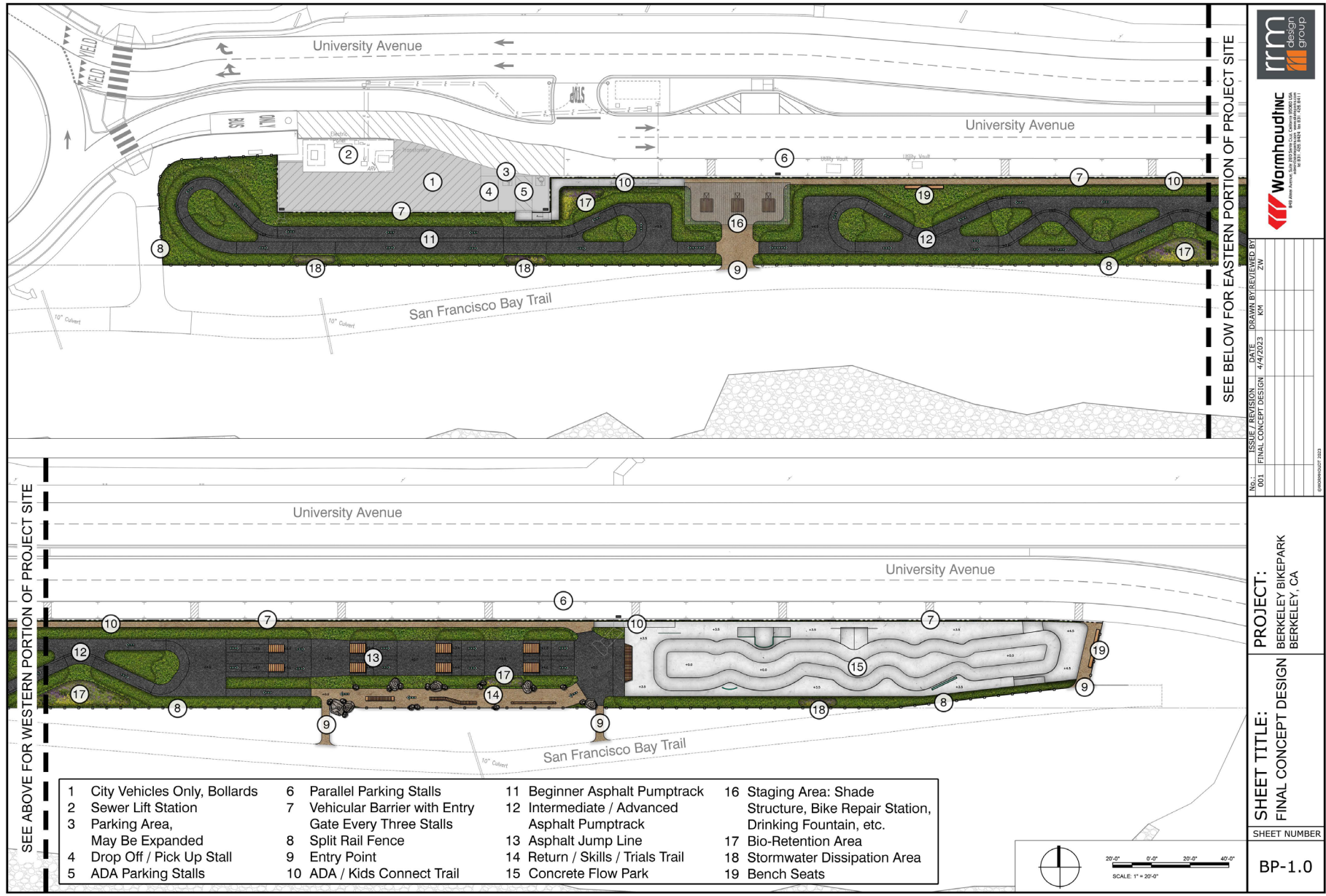
Approximate Bike Park Area adjacent to recently renovated University Avenue



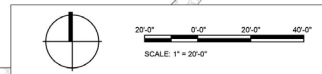


**EXISTING SITE**





- |                                 |  |  |  |
|---------------------------------|--|--|--|
| 1 City Vehicles Only, Bollards  | 6 Parallel Parking Stalls                              | 11 Beginner Asphalt Pumptrack                | 16 Staging Area: Shade Structure, Bike Repair Station, Drinking Fountain, etc. |
| 2 Sewer Lift Station            | 7 Vehicular Barrier with Entry Gate Every Three Stalls | 12 Intermediate / Advanced Asphalt Pumptrack | 17 Bio-Retention Area  |
| 3 Parking Area, May Be Expanded | 8 Split Rail Fence                                     | 13 Asphalt Jump Line                         | 18 Stormwater Dissipation Area   |
| 4 Drop Off / Pick Up Stall      | 9 Entry Point  | 14 Return / Skills / Trials Trail            | 19 Bench Seats   |
| 5 ADA Parking Stalls            | 10 ADA / Kids Connect Trail                            | 15 Concrete Flow Park                        |  |



SEE BELOW FOR EASTERN PORTION OF PROJECT SITE

SEE ABOVE FOR WESTERN PORTION OF PROJECT SITE

No. 001	ISSUE / REVISION
	FINAL CONCEPT DESIGN
DATE	4/4/2023
DRAWN BY	KM
REVIEWED BY	ZV
PROJECT: BERKELEY BIKEPARK BERKELEY, CA	
SHEET TITLE: FINAL CONCEPT DESIGN	
SHEET NUMBER	
BP-1.0	

# FINAL DESIGN CONCEPT





**Paved Pump Tracks**





## Free Ride and Jump Style Features (Asphalt Jump Line)





## Skills Trail Built Features





## Trials Course





## Concrete Flow Park

PREFERRED RIDING FEATURES - EXAMPLES





Picnic Tables



Bench Seats



Drinking Fountain



Bike Racks



Bike Repair Station



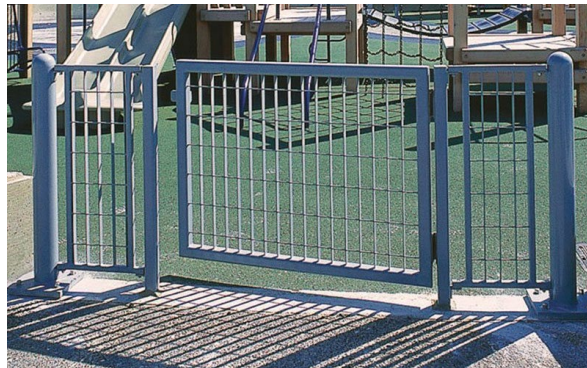




Decompose Granite  
(stabilized) pathways



Bioretention Swales



Vehicular Guard Rails and Gates (between  
University Ave and Bike Park)



**PARK AMENITIES – PRECEDENT IMAGES –  
PLANTING, PATHS & GUARD RAILS**



# OPEN DISCUSSION

- Final Concept Comments
- Any other feedback?





# NEXT STEPS

## Lots of Community Support Needed to Make Project happen

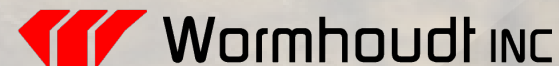
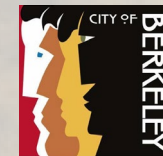
1. Find \$2.0m in design development and construction costs funding
2. Council Member Taplin has proposed funding for \$800k in seed funding in Fiscal Year 2024 that will allow us to start applying for grants and outside funding.
  - Step 1: Proposal to include in budget process on 4/27 City Council Agenda
  - Step 2: Budget process will cover multiple meetings in May and June





# THANK YOU FOR SHARING YOUR INPUT FOR THE WATERFRONT BIKE PARK CONCEPTUAL DESIGN PROJECT

- **Additional Questions & Comments:**  
[aendress@cityofberkeley.info](mailto:aendress@cityofberkeley.info)
- **Project Interest Form:**  
[www.tinyurl.com/BikeParkInterestForm](http://www.tinyurl.com/BikeParkInterestForm)
- **Additional Project Information**  
<https://berkeleyca.gov/your-government/our-work/capital-projects/berkeley-waterfront-bike-park-conceptual-design-project>



**BERKELEY WATERFRONT BIKE PARK**

**COMMUNITY WORKSHOP #1**  
WED. MAY 11, 2022  
@ 5:30PM

JOIN US ON ZOOM  
ID: 891 4053 4660  
HTTPS://US06WEB.ZOOM.US/j/89140534660  
DIAL IN: +16699006833, 89140534660#

**SHARE YOUR VISION**

The poster is dark blue with white and light blue text. It features a white silhouette of a person performing a wheelie on a bicycle. At the top right, there is a small logo that says "Parks Make Life Better!". At the bottom, there is a blue banner with the text "SHARE YOUR VISION".



