

OHLONE PARK IMPROVEMENTS: RESTROOM AND LIGHTING

COMMUNITY MEETING

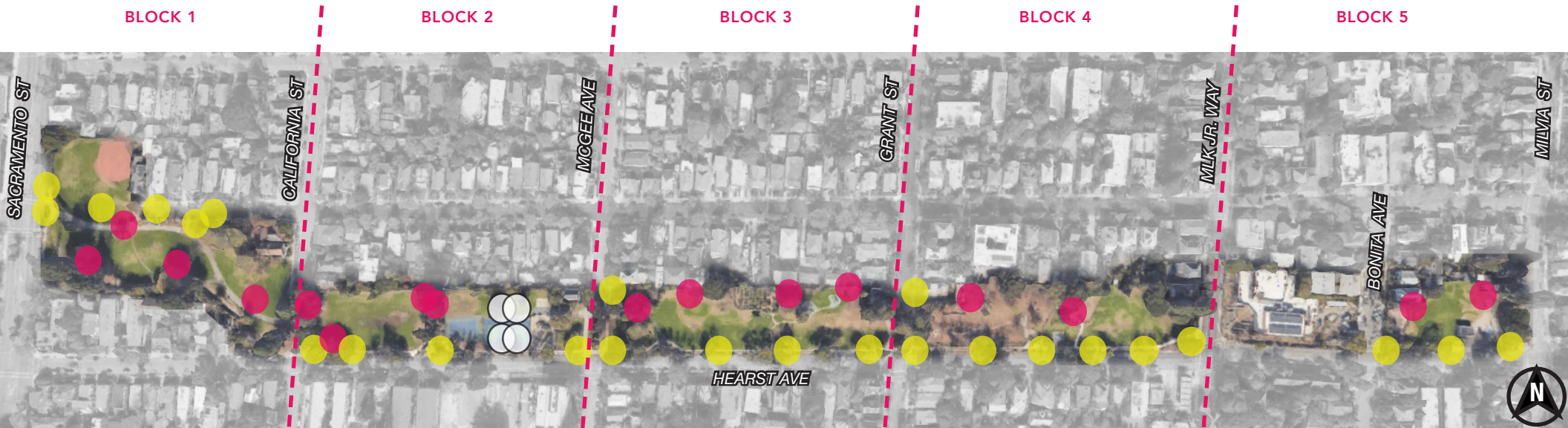


OHLONE PARK EXISTING AMENITIES



----- HIGHER-USE PARK AREA

EXISTING LIGHTING



 EXISTING STREET LIGHT



 EXISTING COURT LIGHT ON A TIMER

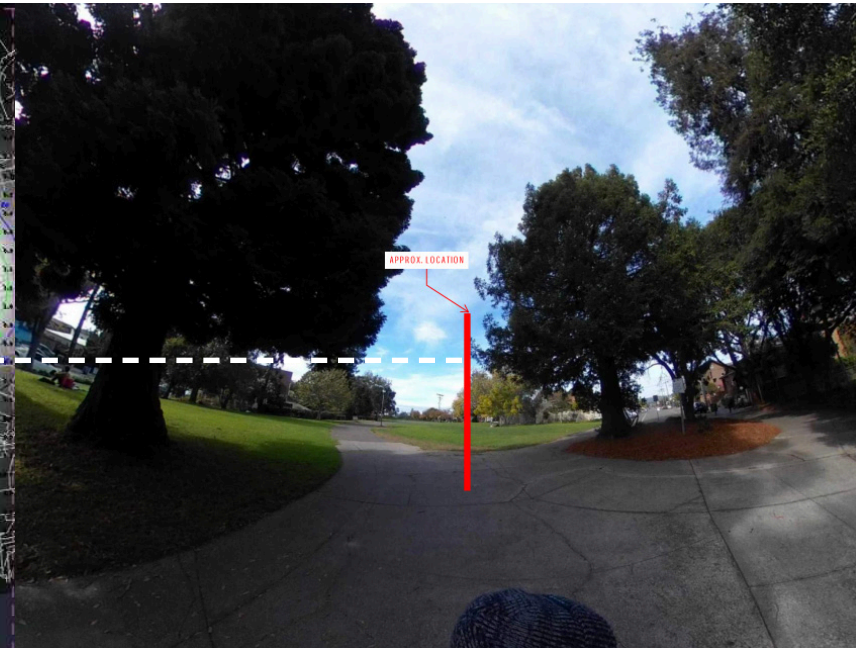
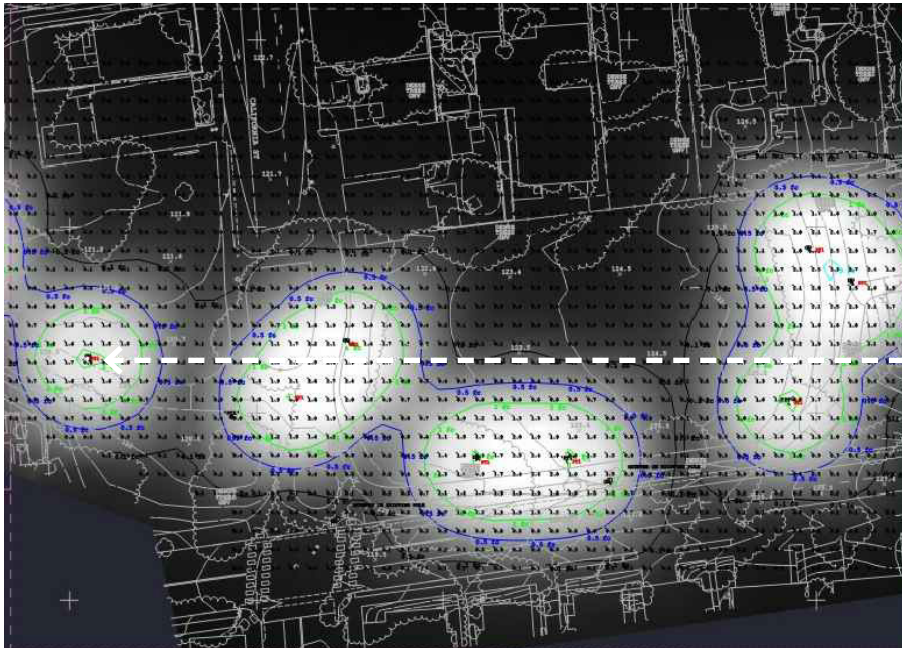
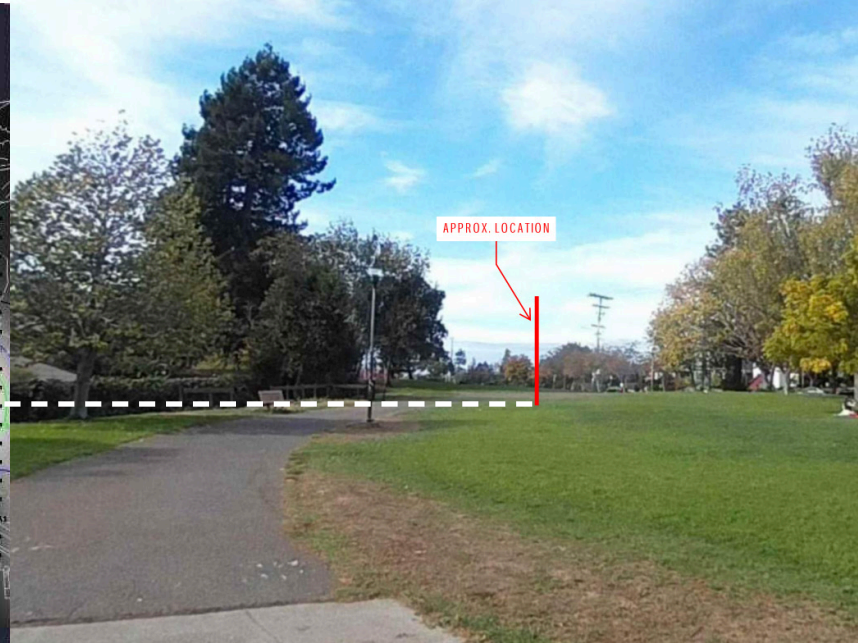
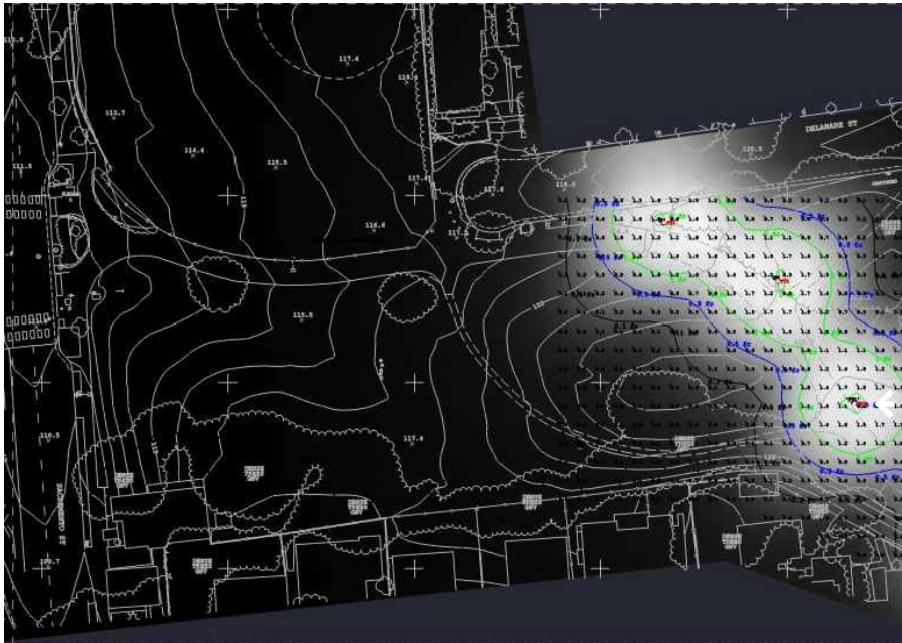


 EXISTING PARK LIGHT



STUDIES OF PROPOSED LIGHTING

STUDIES BY RIJA



BLOCK 1: SACRAMENTO ST. - CALIFORNIA ST.



 E) STREET LIGHT



 E) PARK LIGHT



CURRENT DARK SPOTS ALONG THE PATHWAY



 PROPOSED NEW LIGHT



BLOCK 2: CALIFORNIA ST. - MCGEE AVE.



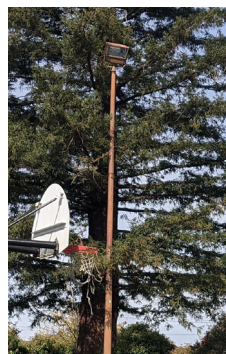
CURRENT DARK SPOTS ALONG THE PATHWAY



 (E) STREET LIGHT



 (E) COURT LIGHT ON A TIMER



 (E) PARK LIGHT



 PROPOSED NEW LIGHT MOUNTED ON (E) COURT LIGHT POLE



 PROPOSED NEW PARK LIGHT



BLOCK 3: MCGEE AVENUE - GRANT STREET



 E) STREET LIGHT



 E) PARK LIGHT



CURRENT DARK SPOTS ALONG THE PATHWAY & BLOCK



 PROPOSED NEW PARK LIGHT



WITH A SHIELD OR



ALTERNATIVE 3.1

BLOCK 4: GRANT STREET - MLK JR WAY



CURRENT DARK SPOTS AT BLOCK



 E) STREET LIGHT



 E) PARK LIGHT



 PROPOSED NEW PARK LIGHT



WITH A SHIELD OR



ALTERNATIVE 4.1

BLOCK 5: MLK JR WAY - MILVIA STREET



CURRENT DARK SPOTS ALONG PATHWAY & BLOCK



 E) STREET LIGHT



 E) PARK LIGHT



 PROPOSED NEW PARK LIGHT

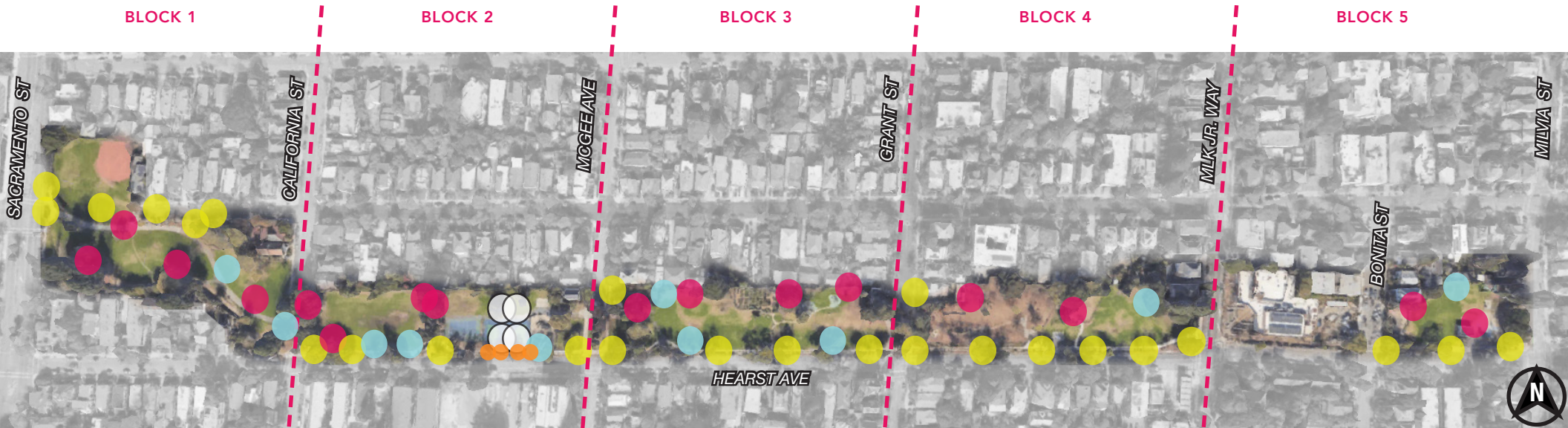


WITH A SHIELD OR



ALTERNATIVE 5.1

NEW AND EXISTING LIGHTING LOCATIONS



● EXISTING STREET LIGHT



○ EXISTING COURT LIGHT ON A TIMER



● EXISTING PARK LIGHT



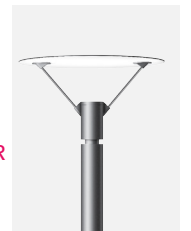
● 4 PROPOSED NEW LIGHT MOUNTED ON E) COURT LIGHT POLE



● 10 PROPOSED NEW PARK LIGHTS



AND/OR



POTENTIAL RESTROOM LOCATIONS CONSIDERED

Location Cons

- Proximity to BART and Sacramento St. bus stops invites overuse from non-park visitors
- Far from rest of high activity areas along entire greenway

Location Cons

- Obstructs sight lines for bikers that use the Greenway
- Reduces higher-use lawn area (Transition Berkeley Crop Swap)

Location Cons

- Requires significant grading work
- Requires several tree removals

Location Cons

- Infeasible due to proximity to BART vents

Location Cons

- Infeasible due to proximity to BART infrastructure and maintenance service area

Location Cons

- Proximity to MLK Jr. Way bus stop invites overuse from non-park visitors
- Close to public restroom at North Berkeley Senior Center



 Bus stop

Best suited locations based on proximity to higher-use park areas and construction feasibility.

PROPOSED RESTROOM LOCATION OPTIONS

A



B



C



D



BATHROOM LOCATION A



A

High visibility	X			
Closer to sports courts	X			
Closer to children's playground				
Space for queuing area	/			
Solar potential	X			
No tree removal required	X			

*This location has an established community familiarity as a restroom location.

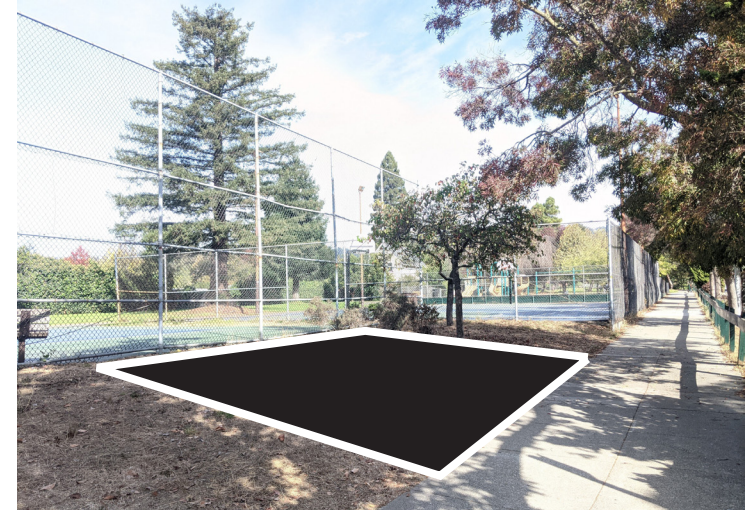
BATHROOM LOCATION B



A **B**

High visibility	X	X		
Closer to sports courts	X	X		
Closer to children's playground				
Space for queuing area	/			
Solar potential	X			
No tree removal required	X	X		

BATHROOM LOCATION C



A **B** **C**

High visibility	X	X	X	
Closer to sports courts	X	X	X	
Closer to children's playground				
Space for queuing area	/		X	
Solar potential	X			
No tree removal required	X	X		

*This location creates blindspots and hiding areas behind the restroom.

BATHROOM LOCATION D



A B C D

High visibility	X	X	X	X
Closer to sports courts	X	X	X	
Closer to children's playground				X
Space for queuing area	/		X	X
Solar potential	X			X
No tree removal required	X	X		X

PROPOSED RESTROOM MODELS

1 Romtec



steel



2 The Portland Loo



steel



3 Public Restroom Company



cmu blocks



1 2 3

	1	2	3
Vandal-proof sinks, toilets, mirrors	X	X	X
Timed auto-locking doors	X	X	X
Solar powered option	X	X	X
Interior and exterior lights	X	X	X
Durable, fire-resistant materials	X	X	X
Maintenance-friendly for park staff	X	X	X
Double-use occupancy	X		X
Ventilation screens for sight/sound transference to regulate unintended restroom uses.	X	X	
Available in custom colors	X		X
Building footprint size	149 sf	50 sf	195 sf

NEW LIGHTING AND RESTROOM DISCUSSION

LIGHTING LOCATIONS



- EXISTING STREET LIGHT
- EXISTING COURT LIGHT ON A TIMER
- EXISTING PARK LIGHT
- 4 PROPOSED NEW LIGHT MOUNTED ON E) COURT LIGHT POLE
- 10 PROPOSED NEW PARK LIGHTS

RESTROOM LOCATIONS



POLL: RESTROOM LOCATION

Which two are your favorite locations?

A



B



C



D



A B C D

High visibility	X	X	X	X
Closer to sports courts	X	X	X	
Closer to children's playground				X
Space for queuing area	/		X	X
Solar potential	X			X
No tree removal required	X	X		X

POLL: RESTROOM MODEL

Which is your favorite model?

1 Romtec



steel

2 The Portland Loo



steel

3 Public Restroom Company



cmu blocks

1 2 3

	1	2	3
Vandal-proof sinks, toilets, mirrors	X	X	X
Timed auto-locking doors	X	X	X
Solar powered option	X	X	X
Interior and exterior lights	X	X	X
Durable, fire-resistant materials	X	X	X
Maintenance-friendly for park staff	X	X	X
Double-use occupancy	X		X
Ventilation screens for sight/sound transference to regulate unintended restroom uses.	X	X	
Available in custom colors	X		X
Building footprint size	149 sf	50 sf	195 sf

NEW LIGHTING AND RESTROOM

LIGHTING LOCATIONS



- EXISTING STREET LIGHT
- EXISTING COURT LIGHT ON A TIMER
- EXISTING PARK LIGHT
- 4 PROPOSED NEW LIGHT MOUNTED ON E) COURT LIGHT POLE
- 10 PROPOSED NEW PARK LIGHTS

RESTROOM LOCATIONS

