

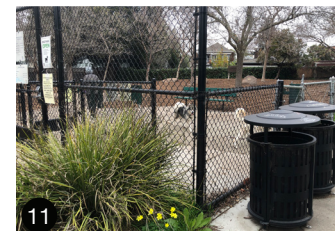
OHLONE PARK IMPROVEMENTS: RESTROOM AND LIGHTING

COMMUNITY MEETING



1. EXISTING OHLONE PARK AMENITIES
2. PROPOSED NEW RESTROOM LOCATION AND MODEL
3. PROPOSED NEW LIGHTING LOCATIONS AND MODELS
4. NEW LIGHTING AND RESTROOM DISCUSSION

OHLONE PARK EXISTING AMENITIES



----- HIGHER-USE PARK AREA

PROPOSED NEW RESTROOM LOCATION

A



	A	B	C	D
High visibility	X	X	X	X
Closer to sports courts	X	X	X	
Closer to children's playground				X
Space for queuing area	/		X	X
Solar potential	X			X
No tree removal required	X	X		X

*This location has an established community familiarity as a restroom location.

B



C



D



PROPOSED NEW RESTROOM LOCATION

Site Layout



New paved area for queuing

New double restroom facility



PROPOSED NEW RESTROOM MODEL

1 Romtec Sidewalk Restroom



1 2 3

Vandal-proof sinks, toilets, mirrors	X	X	X
Timed auto-locking doors	X	X	X
Solar powered option	X	X	X
Interior and exterior lights	X	X	X
Durable, fire-resistant materials	X	X	X
Maintenance-friendly for park staff	X	X	X
Double-use occupancy	X		X
Ventilation screens for sight/sound transference to regulate unintended restroom uses.	X	X	
Available in custom colors	X		X
Building footprint size	149 sf	50 sf	195 sf

2 The Portland Loo



3 Public Restroom Company

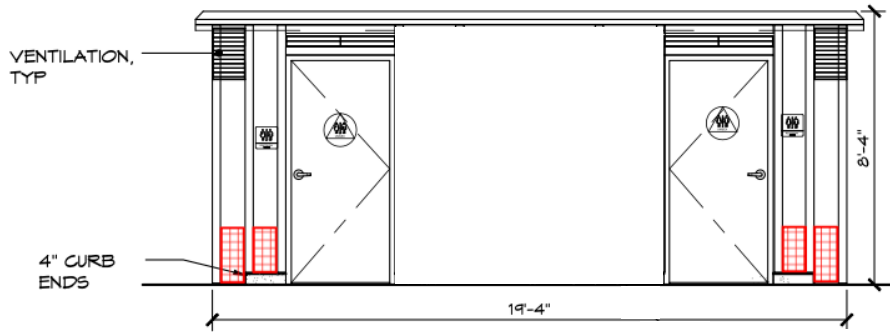


Vandalism Maintenance Features:

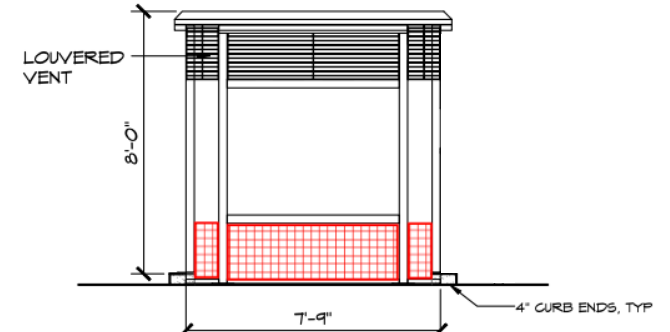
- Building is made entirely of steel for easier cleaning and fire resistance.
- Color-match touch-up paint provided to cover any vandalism that cannot be washed over or smoothed out.
- Interior trench drains make for easy, flood-free hose downs when required.

RESTROOM MODEL

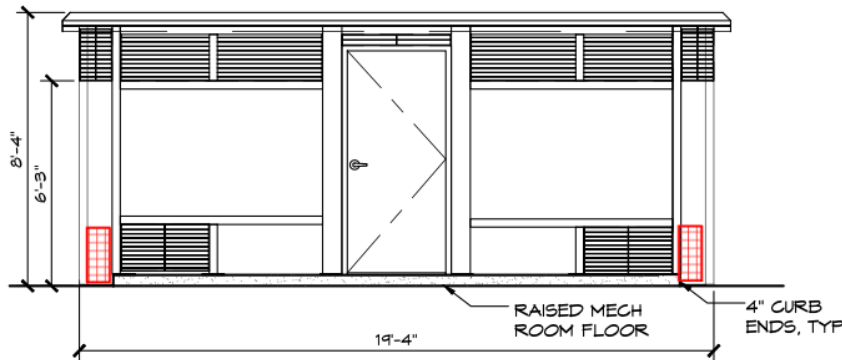
Additional Ventilation Options



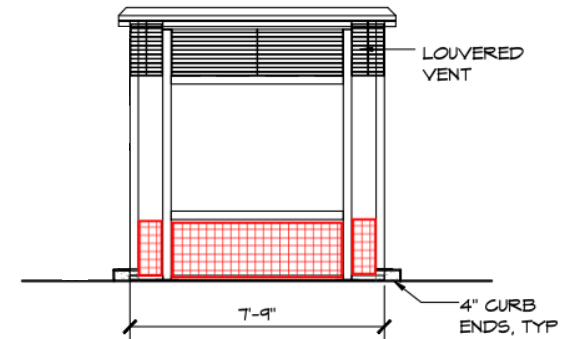
A ELEVATION VIEW
SCALE: 1/4" = 1'-0"



B ELEVATION VIEW
SCALE: 1/4" = 1'-0"



C ELEVATION VIEW
SCALE: 1/4" = 1'-0"



D ELEVATION VIEW
SCALE: 1/4" = 1'-0"

POLL: RESTROOM MODEL AMENITIES



Restroom Color

Gray



Cream



Blue



Green



Lighting

No Interior Lights
(ambient daylight only)

Interior Motion
Sensor Lights

Blue/green
Occupancy Lights

POLL: RESTROOM MODEL AMENITIES



Interior Structural Features

Interior Sinks



Interior Toilet Only



No Interior Sinks,
Exterior only

Interior Toilet and
Urinal (requires
exterior sinks)

Exterior Structural Features

Two Exterior Sinks

- With Canopy
- Free standing
drinking fountain
and bottle filler



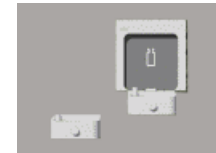
One Exterior Sink
and One Drinking
Fountain

- With Canopy



One Exterior
Drinking Fountain
and One Bottle
Filler

- With Canopy



No Exterior Amenities

- Separate free standing drinking
fountain and bottle filler



Closest existing drinking fountain
at children's playground.

EXISTING LIGHTING

BLOCK 1

BLOCK 2

BLOCK 3

BLOCK 4

BLOCK 5



 EXISTING STREET LIGHT

 EXISTING PARK LIGHT

 EXISTING COURT LIGHT ON A TIMER



PROCESS OF SELECTING NEW LIGHTS LOCATIONS



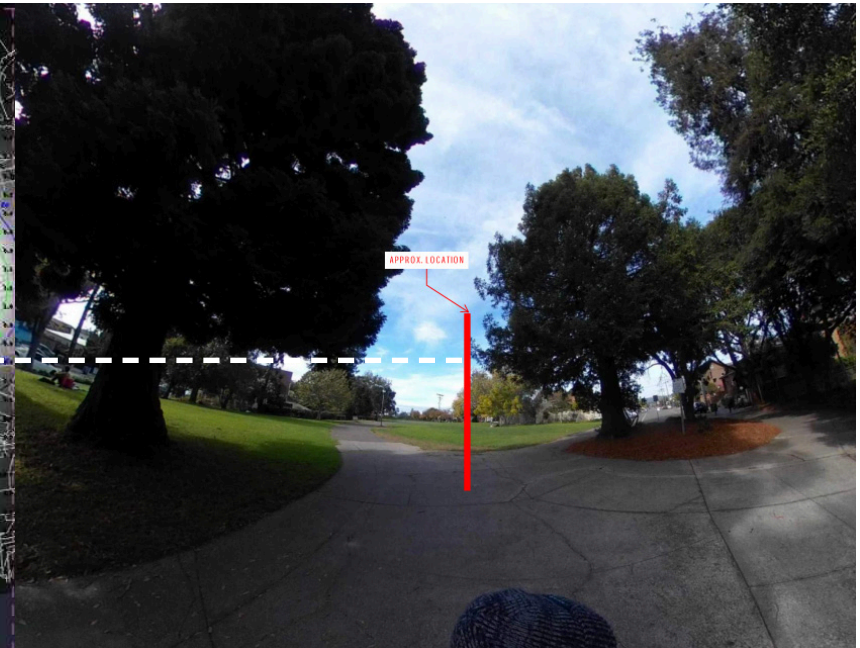
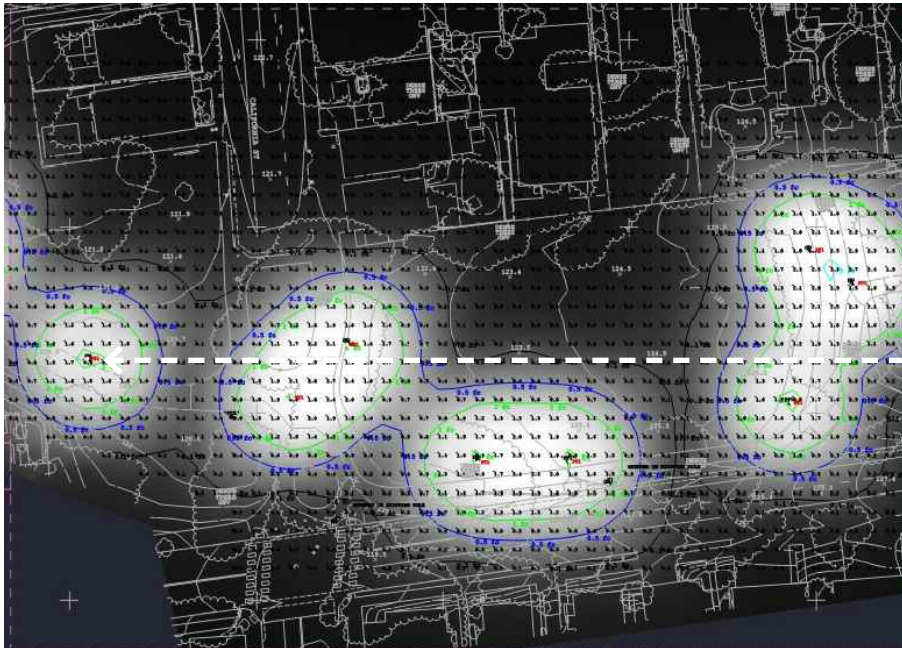
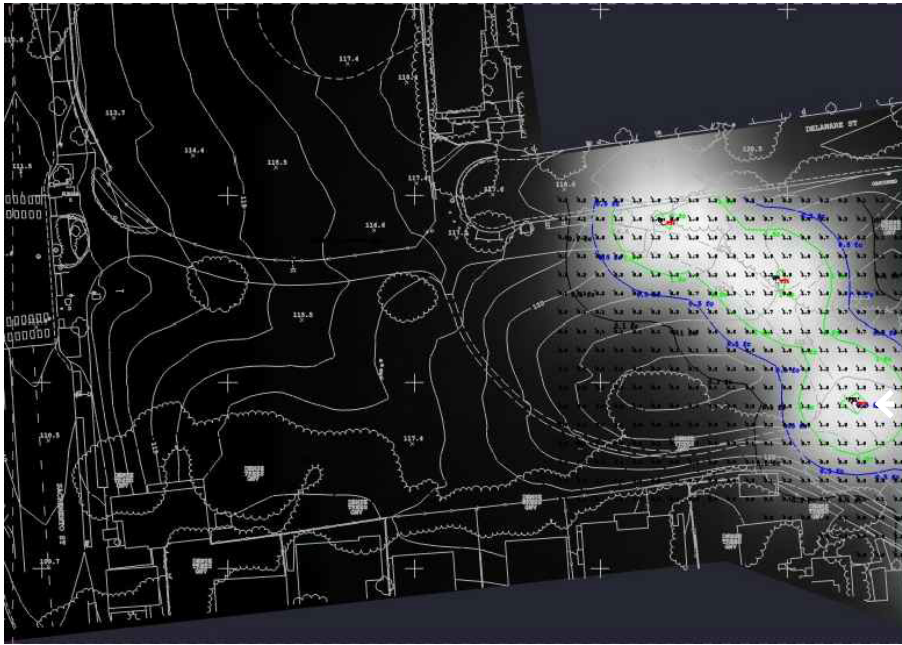
SAFE PATHWAYS LIGHTING IMPROVEMENT PLAN (submitted by community group circa 2016-2018)

PROCESS OF SELECTING NEW LIGHTS LOCATIONS



PHOTOMETRIC STUDIES

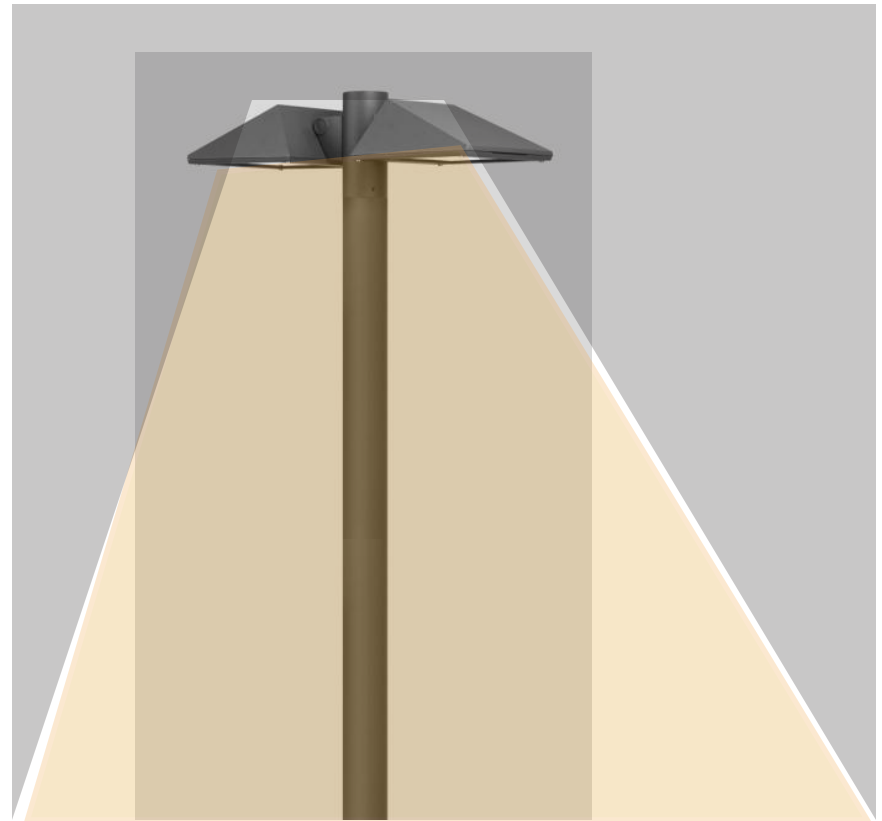
STUDIES BY RIJA



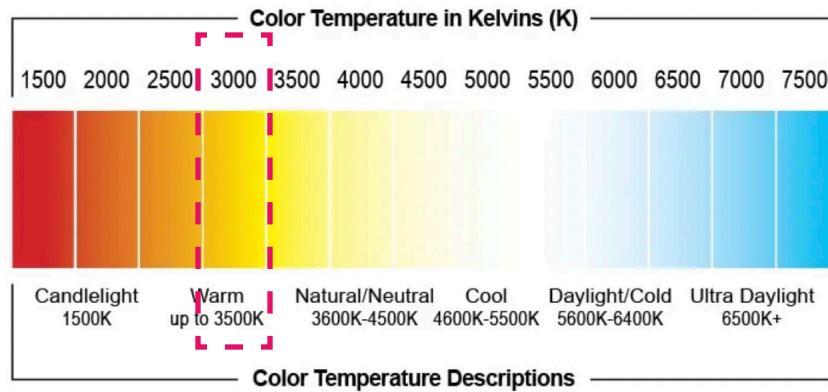
PROPOSED NEW PARK LIGHTING FIXTURES



TYPE 1



TYPE 2



EXISTING LIGHTING AND PROPOSED NEW LIGHTING



EXISTING STREET LIGHT

EXISTING PARK LIGHT

EXISTING COURT LIGHT ON A TIMER

(4) PROPOSED NEW LIGHT MOUNTED ON E) COURT LIGHT POLE

(7) PROPOSED NEW PARK LIGHTS

(4) PROPOSED NEW SPORT COURT LIGHTS ON A TIMER



AND/OR



(3) PROPOSED NEW LIGHT BOLLARDS



OR

BLOCK 1: SACRAMENTO ST. - CALIFORNIA ST.



 E) STREET LIGHT



 E) PARK LIGHT



PROPOSED LIGHT LOCATIONS AND CURRENT DARK SPOTS



 PROPOSED NEW LIGHT



TYPE 1

BLOCK 2: CALIFORNIA ST. - MCGEE AVE.



PROPOSED LIGHT LOCATIONS AND CURRENT DARK SPOTS



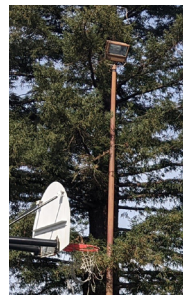
 E) STREET LIGHT



 E) PARK LIGHT




 E) COURT LIGHT ON A TIMER



 (2) PROPOSED NEW PARK LIGHT

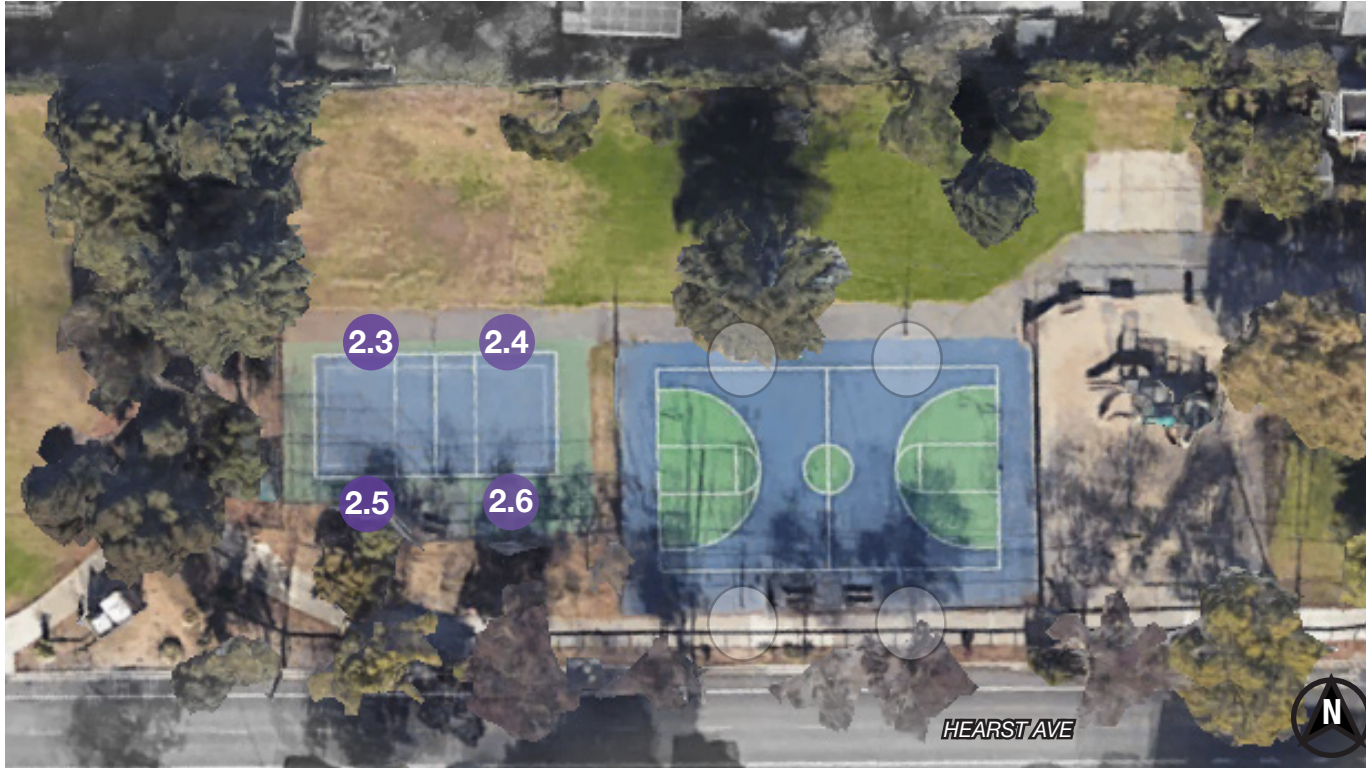


TYPE 2

 (4) PROPOSED NEW LIGHT MOUNTED ON E) BASKETBALL COURT LIGHT POLE



BLOCK 2: SPORTS COURTS



○ E) COURT LIGHT ON A TIMER



(4) PROPOSED NEW SPORT COURT LIGHT ON A TIMER



OR



BLOCK 3: MCGEE AVENUE - GRANT STREET



PROPOSED LIGHT LOCATIONS AND CURRENT DARK SPOTS



(E) STREET LIGHT



(E) PARK LIGHT



(2) PROPOSED NEW PARK LIGHT



TYPE 2

BLOCK 4: GRANT STREET - MLK JR WAY



PROPOSED LIGHT LOCATIONS AND CURRENT DARK SPOTS



 E) STREET LIGHT



 E) PARK LIGHT



 (1) PROPOSED NEW PARK LIGHT



 (3) PROPOSED NEW LIGHT BOLLARDS



BLOCK 5: MLK JR WAY - MILVIA STREET




EXISTING LIGHT POST TO BE RELOCATED



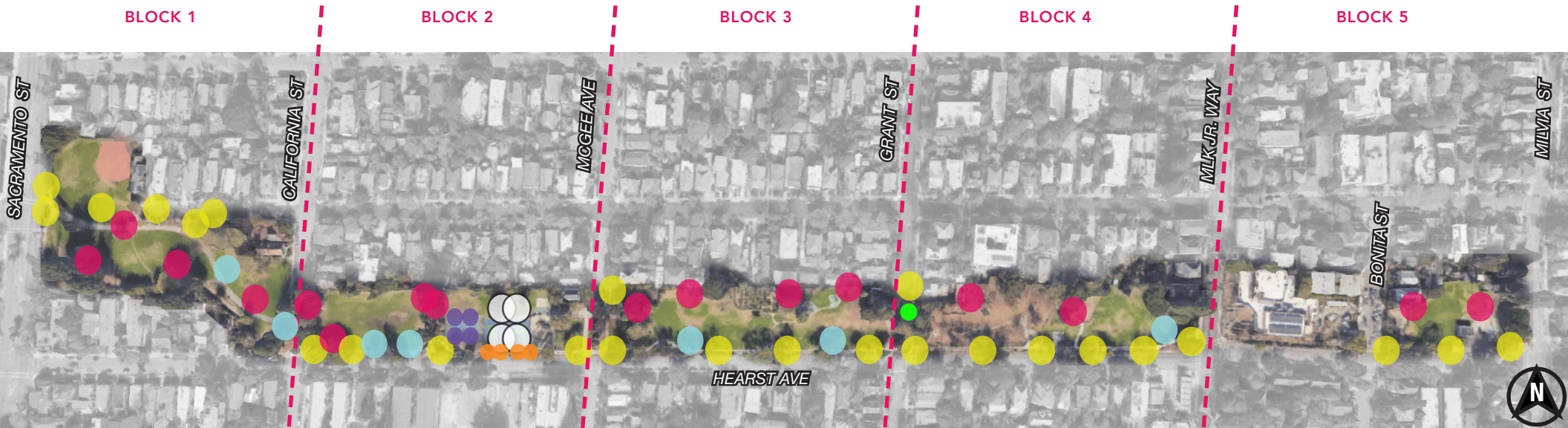
 E) STREET LIGHT



 E) PARK LIGHT



EXISTING LIGHTING AND PROPOSED NEW LIGHTING



● EXISTING STREET LIGHT

● EXISTING PARK LIGHT

○ EXISTING COURT LIGHT ON A TIMER

● (4) PROPOSED NEW LIGHT MOUNTED ON E) COURT LIGHT POLE

● (7) PROPOSED NEW PARK LIGHTS

● (4) PROPOSED NEW SPORT COURT LIGHTS ON A TIMER



AND

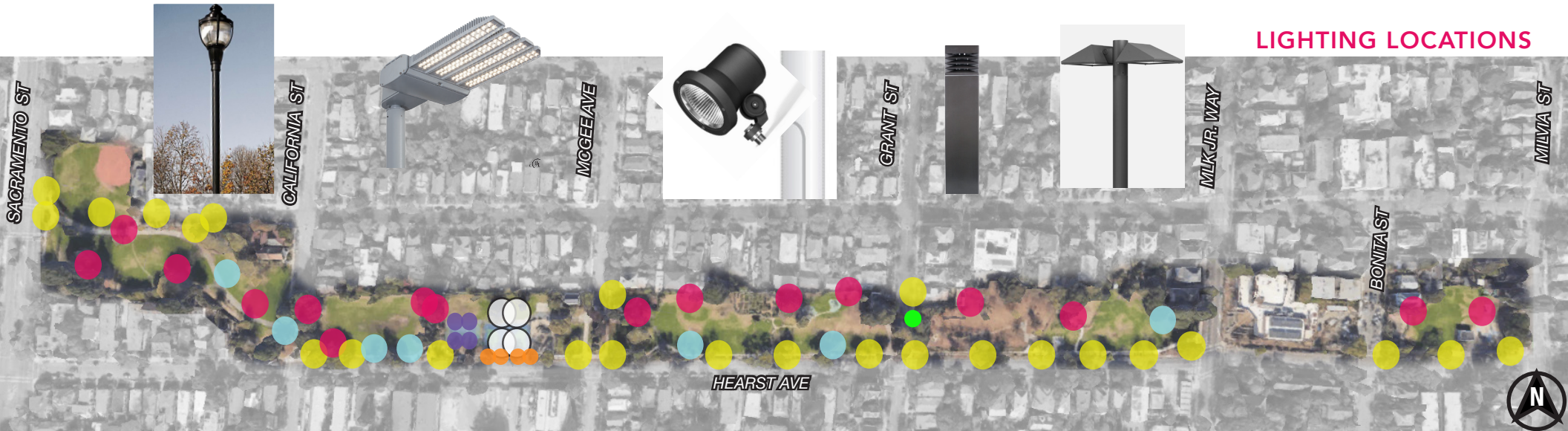


● (3) PROPOSED NEW LIGHT BOLLARDS



OR

NEW LIGHTING AND RESTROOM DISCUSSION



LIGHTING LOCATIONS

-  EXISTING STREET LIGHT
-  EXISTING PARK LIGHT
-  EXISTING COURT LIGHT ON A TIMER
-  (4) PROPOSED NEW LIGHT MOUNTED ON E) COURT LIGHT POLE
-  (7) PROPOSED NEW PARK LIGHTS
-  (4) PROPOSED NEW SPORT COURT LIGHTS ON A TIMER
-  (3) PROPOSED NEW LIGHT BOLLARDS



RESTROOM LOCATION



(1) PROPOSED NEW PREFABRICATED RESTROOM-DOUBLE OCCUPANCY