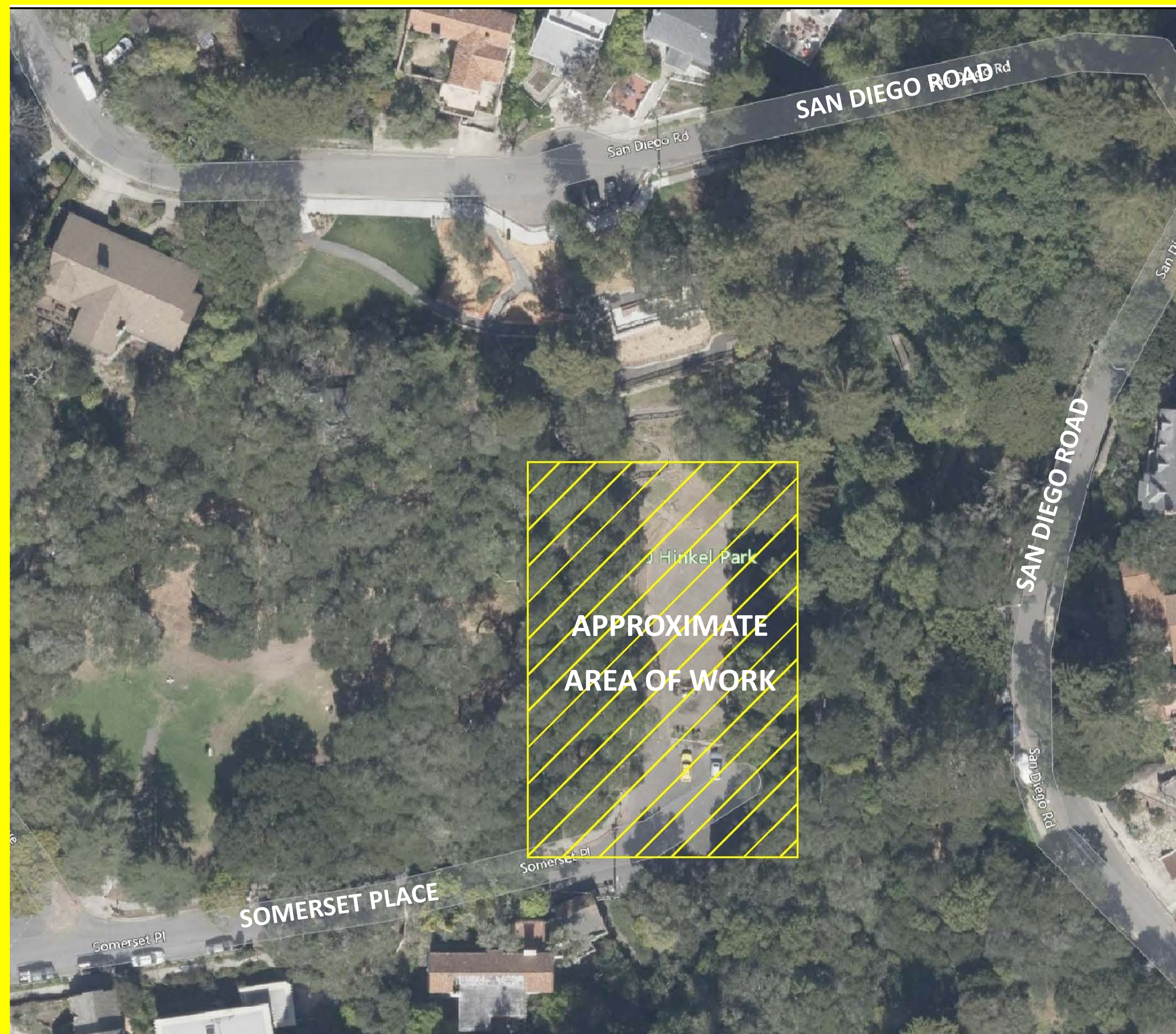


JOHN HINKEL PARK AMPHITHEATER AREA RENOVATION PROJECT

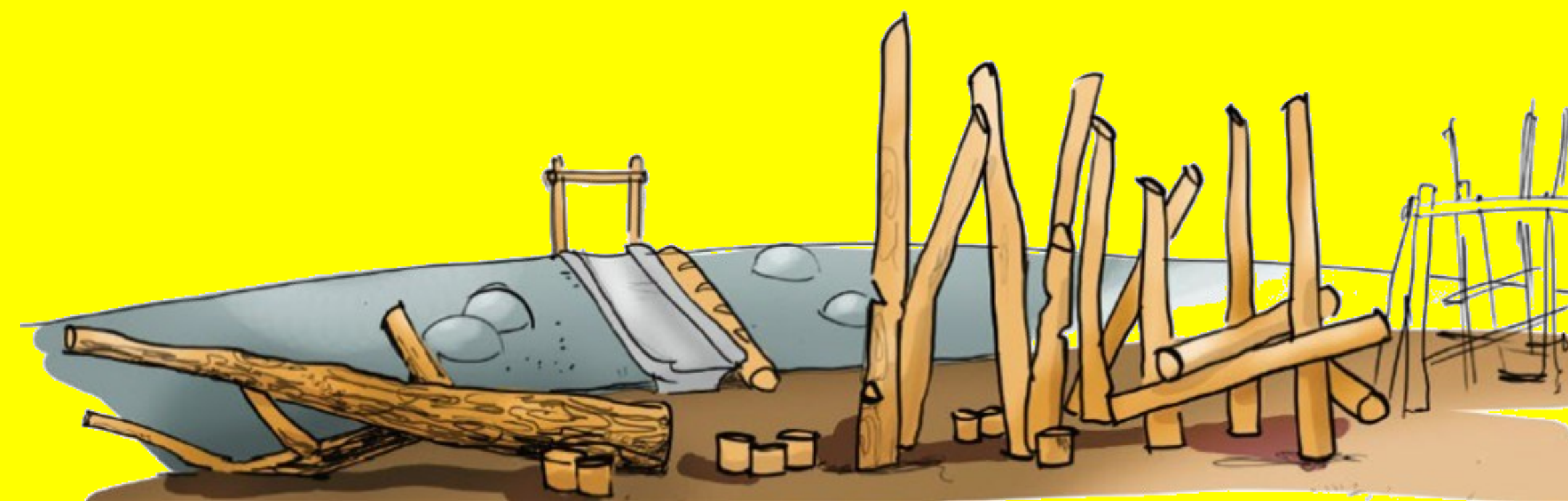


PROJECT INFORMATION

Construction at John Hinkel Park includes a new playground and picnic area, as well as repairs and accessibility improvements for the John Hinkel Park Amphitheater at Somerset Place. Improvements include reconfigured parking and an accessible path from the parking area, to the playground, picnic and amphitheater performance area and also repairs to historic site features. Thank you for your patience as we work to improve our parks. Approximate work area is shown in yellow on the aerial image adjacent.

Anticipated Start Date: September 2021

Duration: Approximately 8 months



For more information, please see: <http://www.cityofberkeley.info/prw/> **Or contact:** City of Berkeley, (510) 981-CITY/2489 or 311 from any landline in Berkeley; or the Department of Parks, Recreation & Waterfront at (510) 981-6700; Project Manager: Isaac Carnegie, (510) 981-6432; Construction Manager: O'Connor Construction Management: Brad Cherb, (916) 205-4552; Contractor: OBS Engineering, Inc. Lizbeth Bhatia, (415) 496-9557.

