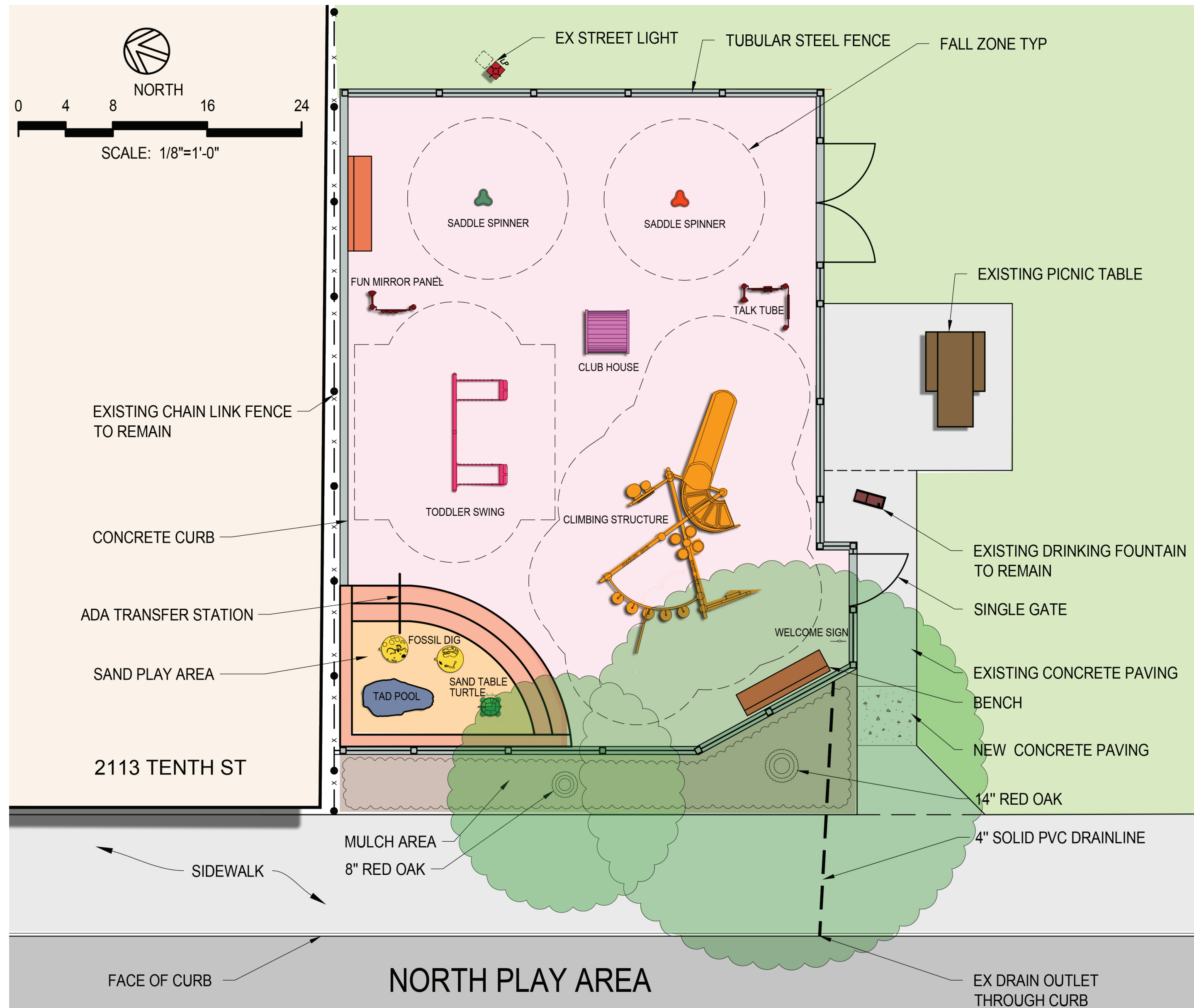


# PLAN



# 3D RENDERINGS



GEORGE FLORENCE PARK



NORTH PLAY AREA PREFERRED OPTION  
FOR AGES 2-5 YEARS



# PLAY EQUIPMENT ELEMENTS



Tadpool



Bongo and Xylofun Panel



Bobble Rider



Cozy Coaster® Slide



Swiggly Stix™ Bridge



Visual sensory



Toddler Swing



Turtle Sand Table



Wee Pod® Climber



Chimes Panel



Talk Tubes



Wave Structure



Ring-a-Bell™ Panel



Fossil Dig



ClubHouse

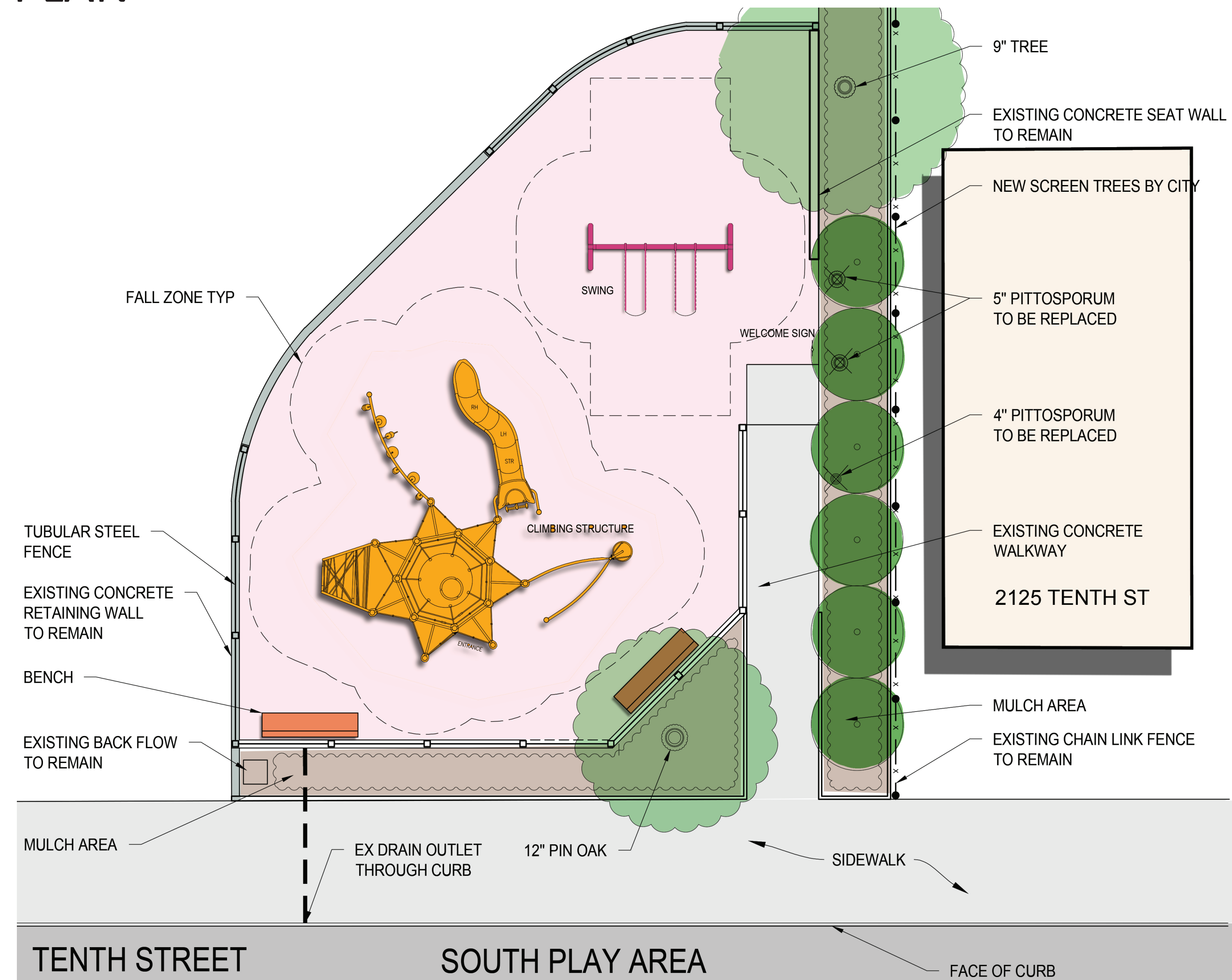
GEORGE FLORENCE PARK



NORTH PLAY AREA PREFERRED OPTION  
FOR AGES 2-5 YEARS



# PLAN



# 3D RENDERINGS



# GEORGE FLORENCE PARK

CITY OF BERKELEY

# SOUTH PLAY AREA PREFERRED OPTION FOR AGES 5-12 YEARS

landscape structures  
HARRIS DESIGN

# PLAY EQUIPMENT ELEMENTS



Netplex® 14



Watermill™ Climber



Sol Spinner



SwiggleKnots™ Bridge



Disc Net™ Climber



Belt Seat Chain Swing

## GEORGE FLORENCE PARK



## SOUTH PLAY AREA PREFERRED OPTION FOR AGES 5-12 YEARS

