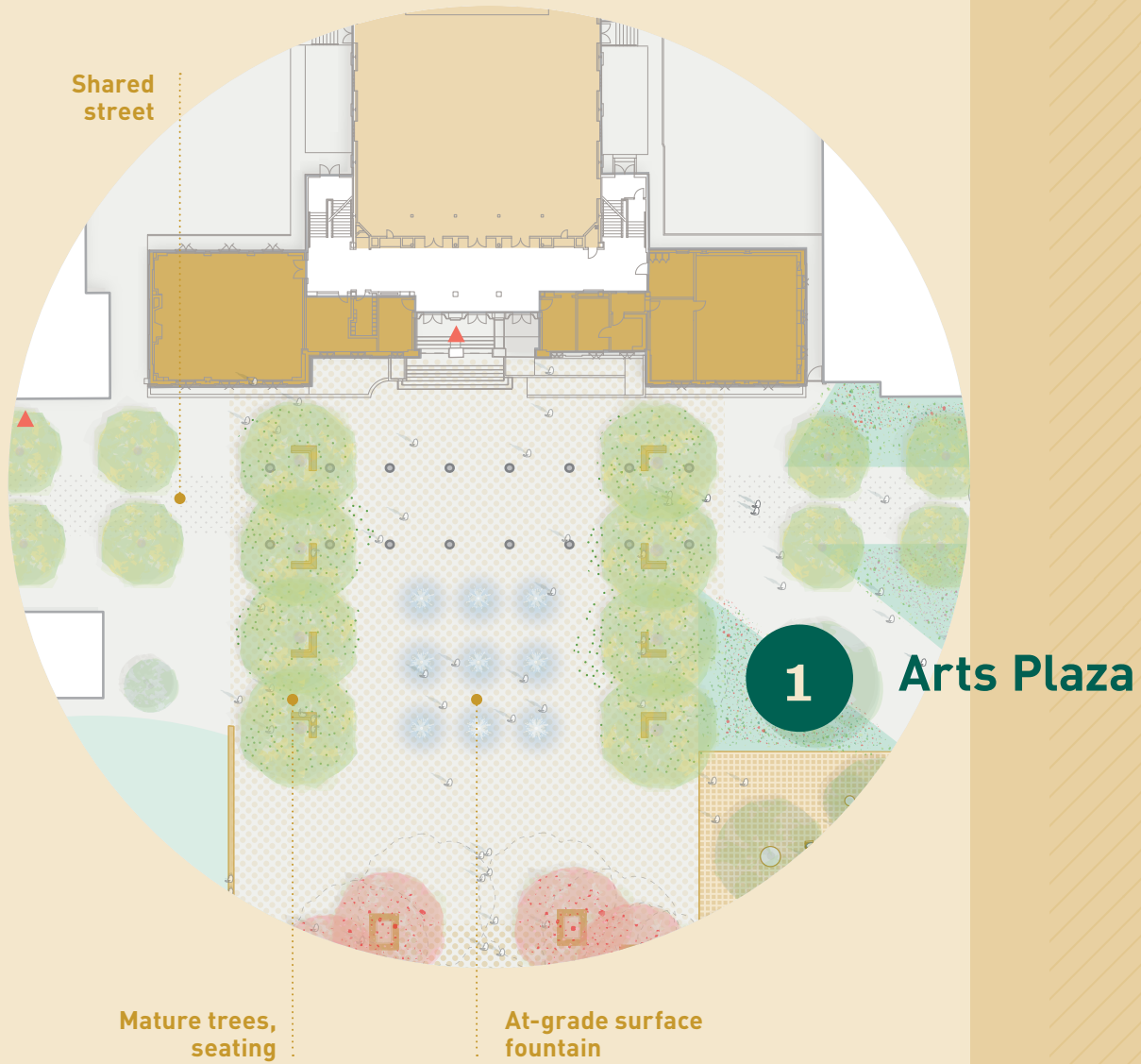


Recommendations

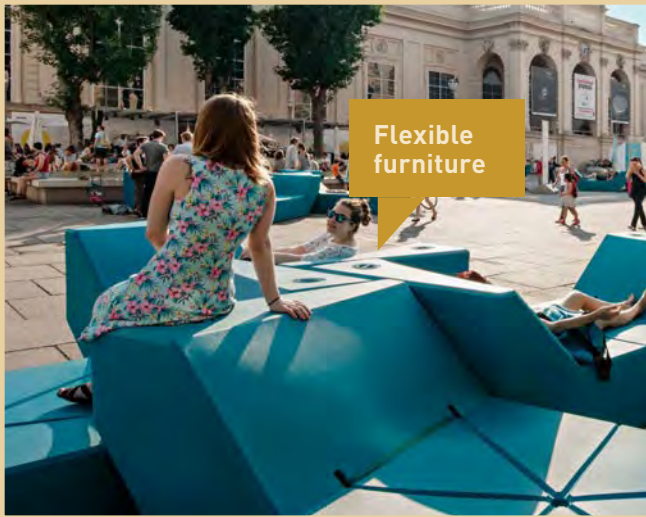


↑ The Porch at 30th, Philadelphia

Note: All drawings are illustrative and conceptual, further landscape design is required.



↑ Place de Republique, Paris



Flexible furniture

↑ Leopold Museum, Vienna

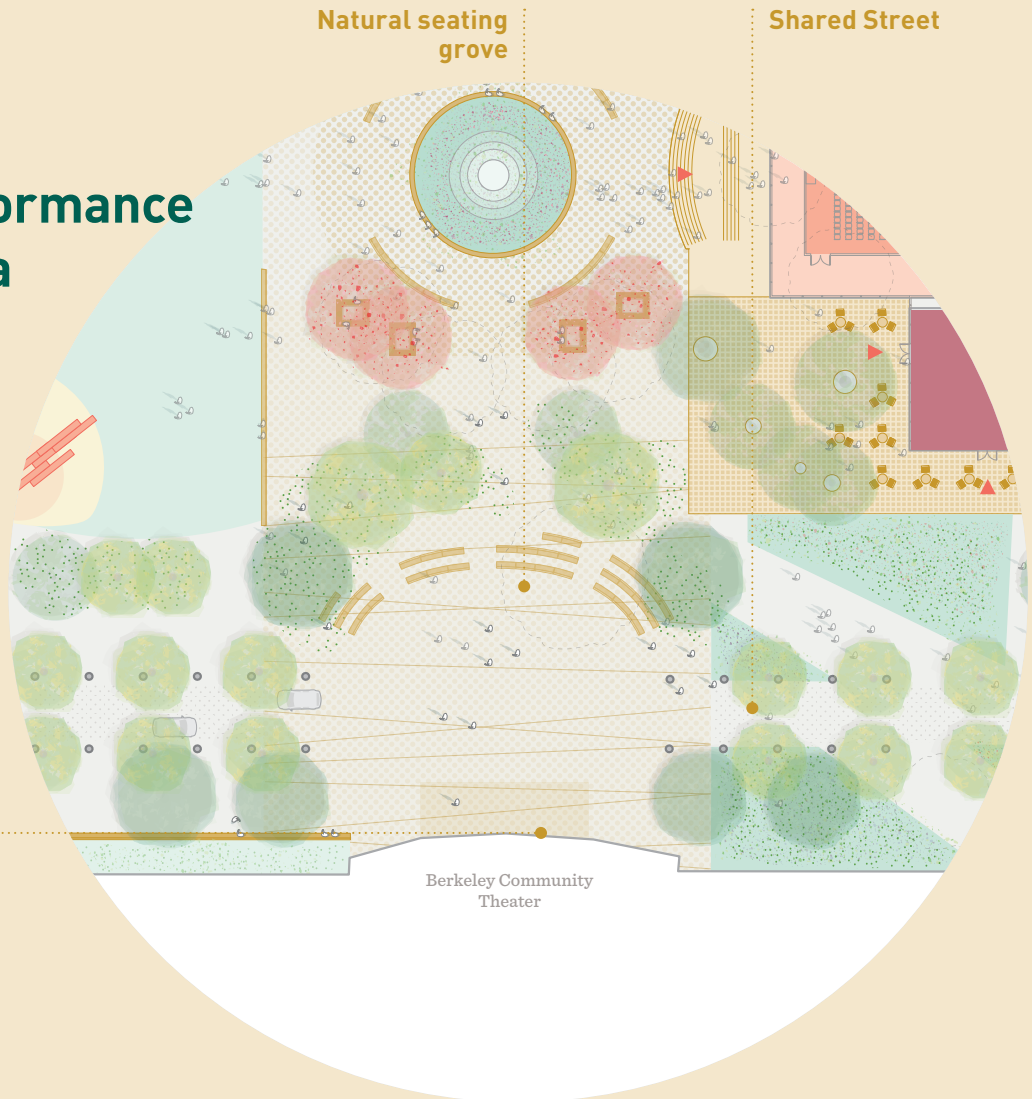


Shady places to sit

↑ The MET Plaza, New York

2

Performance Plaza



Stage with backdrop of Berkeley Community Theater Relief

Berkeley Community Theater

3 Leafy Ledge



4 Playscapes

Note: All drawings are illustrative and conceptual, further landscape design is required.



↑ Grevelingenveld, Den Haag, Netherlands

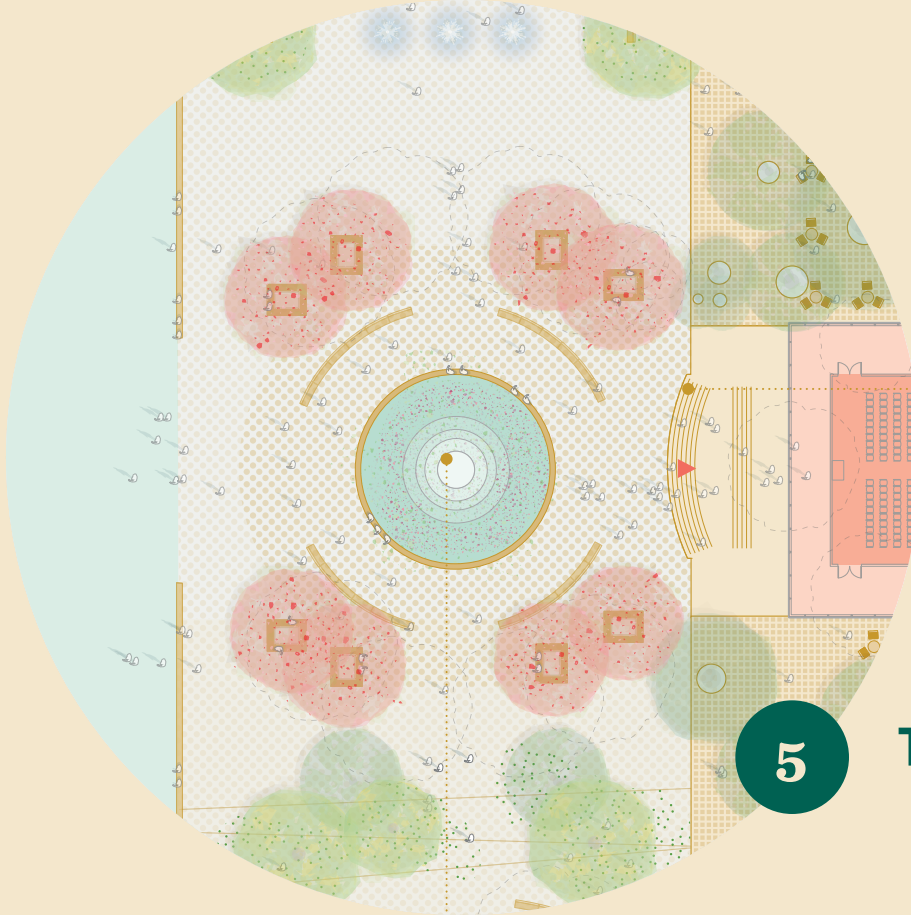


↑ Park 'n' Play, Copenhagen



↑ Madrid Rio, Madrid

Recommendations



Inhabitable stairs
and porch ledge

5

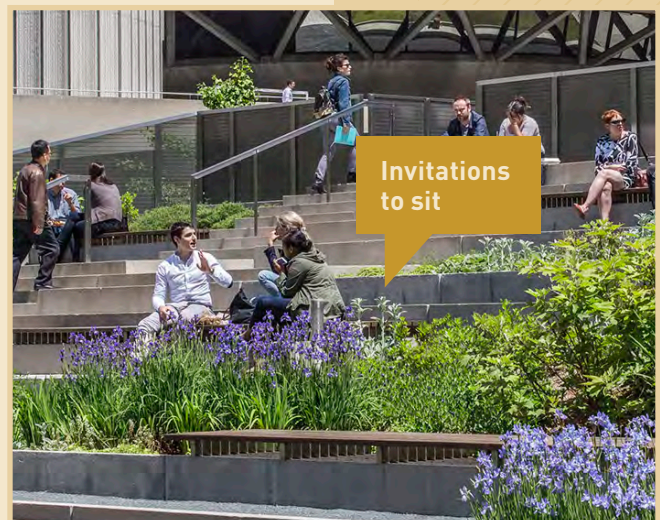
Turtle Garden

Turtle Garden



Sensory
garden

↑ Frederiksberg, Copenhagen



Invitations
to sit

↑ Nathan Philips Square Peace Garden, Toronto

Note: All drawings are illustrative and conceptual, further landscape design is required.



Open, operable facade

↑ Kensington Gardens, London

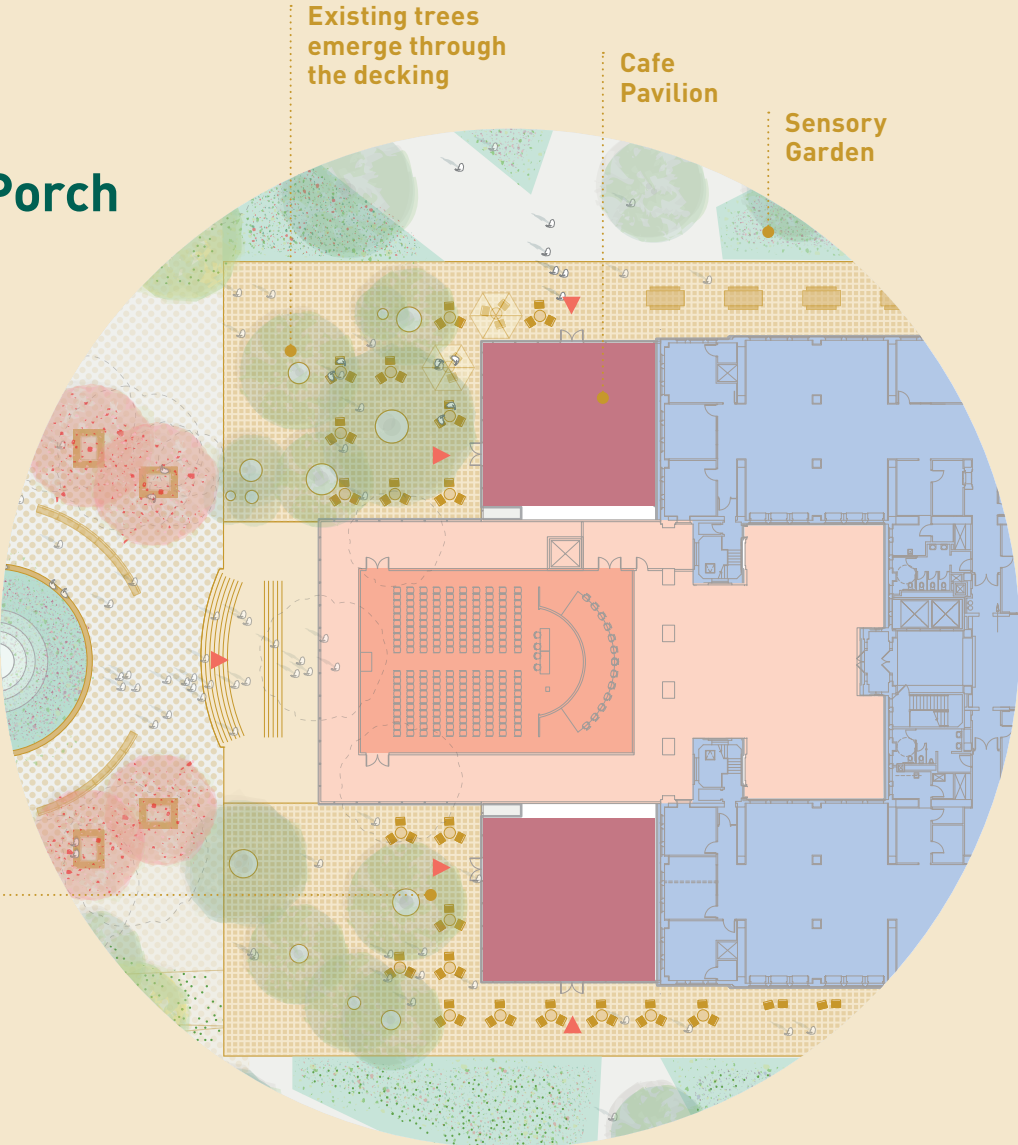


Moveable furniture

↑ Monash University, Caulfield, Australia

6

Front Porch



The Civic Center Food Market

Berkeley has been a leader in both the modern culinary movement and educational programs related to growing and preparing food. Defined by success stories like the Edible Schoolyard Project founded by Alice Waters and local gardening projects led by Karl Linn, Berkeley's celebration of locally-grown food as cornerstone of local culture can be given a permanent home at Civic Center. The design team found strong support among educators, political leaders and public commenters for an all-week expansion of the Farmer's Market currently run by the Ecology Center using some version of a pavilion where fresh produce and prepared foods could be sold, alongside a classroom kitchen serving Berkeley High School's vocational programs. We recommend that BHS, the Ecology Center, and the City create a partnership program using students to staff the pavilion under the supervision of a market manager.

Food Market

Potential Locations*

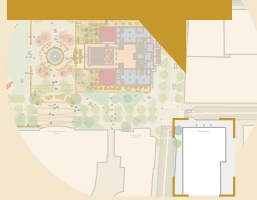
Pavilion in the park



Option: Market Pavilion in Civic Center Park

A pavilion building and/or lightweight canopy structure could be integrated within the park that provides storage and restrooms for an indoor/outdoor food market and serves as a more permanent presence for fresh, local produce in Civic Center.

Berkeley Post Office



Option: Market in Berkeley's Main Post Office

The United States Post Office building on Allston Way is a historic building with great potential to be transformed into an indoor public market. The spacious ground floor lends itself well for a market adaptation and the building is already equipped with storage facilities and a loading/unloading area.

**Note: The two locations shown above are for the purpose of illustrating potential. Further study is required.*

Berkeley Post Office Building →



←Community and Public Health & Nutrition Programs at Berkeley High School



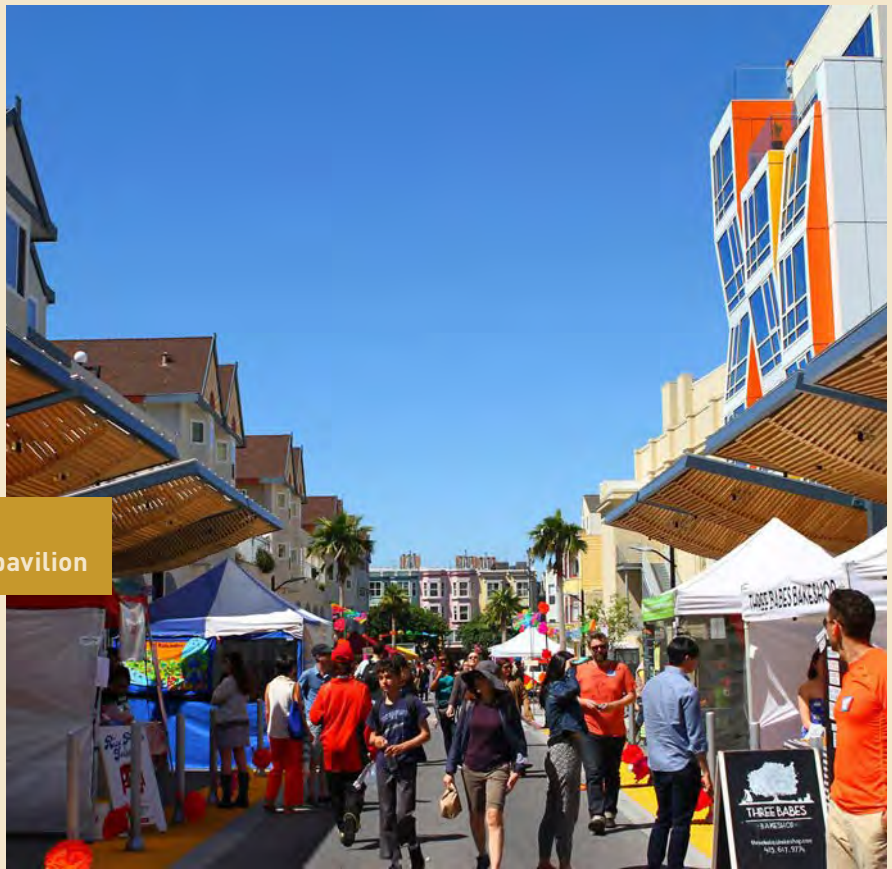


↑ Vineyard Farmers Market, Fresno



Outdoor market pavilion

↑ Overland Park Market, Kansas City ↑ “La Placita” Mission Community Market, San Francisco



Large market hall in historic building

↑ West Side Market, Cleveland



↑ Findlay Market, Cincinnati



Simple, modern overhead pavilion

↑ Torvehallerne Market, Copenhagen