



WOOLSEY-FULTON BIKE BOULEVARD & SHATTUCK-MLK BUS STOPS SAFETY PROJECTS

TRANSPORTATION & INFRASTRUCTURE COMMITTEE MEETING

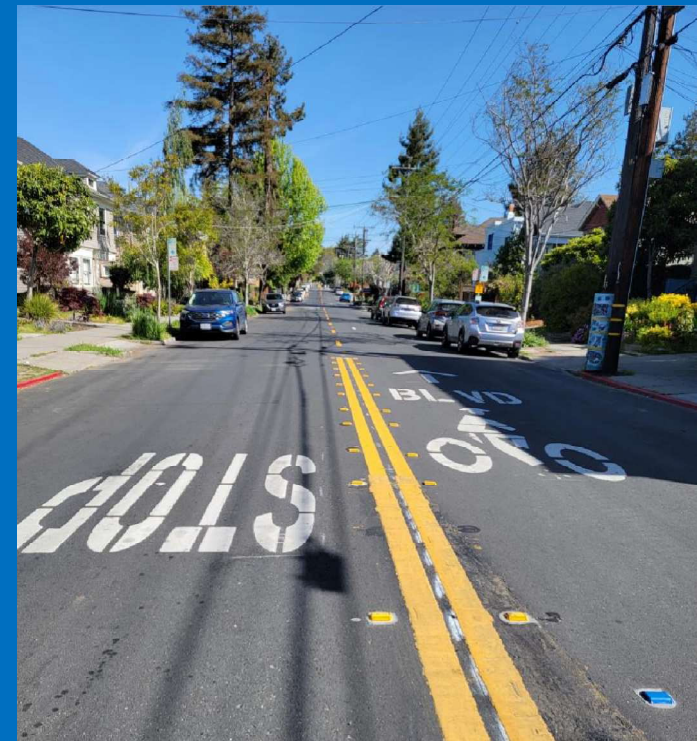
FEBRUARY 15, 2024

PUBLIC WORKS DEPARTMENT - TRANSPORTATION DIVISION

Presented by:

Ken Jung, Supervising Civil Engineer

Jesse Peoples, Associate Civil Engineer



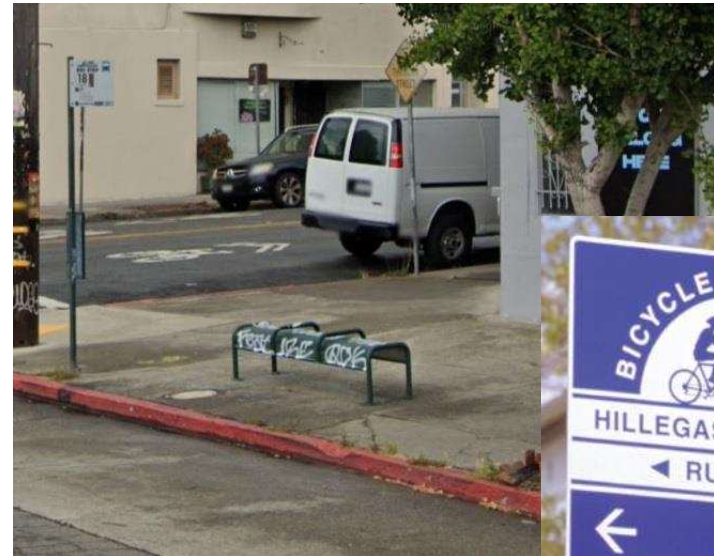


WOOLSEY-FULTON BIKE BOULEVARD & SHATTUCK-MLK BUS STOPS SAFETY PROJECTS

PURPOSE

1. Present Conceptual Design to the TIC
2. Respond to Questions by Commissioners
3. Request TIC vote: Support the conceptual design, with comments as applicable

~~Recommend conceptual design for City Council meeting on 3/19/24~~



Note:
Markups based on the as-presented version by City staff during the February 15, 2024 Transportation & Infrastructure Commission meeting





WOOLSEY-FULTON BIKE BOULEVARD & SHATTUCK-MLK BUS STOPS SAFETY PROJECTS

PROJECT LOCATION & GOALS

■ Woolsey-Fulton Bike Blvd. Project (WFBB)

- Safety improvements for pedestrians and bicyclists, especially at major crossings
- Fills gap in Citywide bike network: Ashby BART to Southside area

■ Shattuck-MLK Bus Stops Project (SMBS)

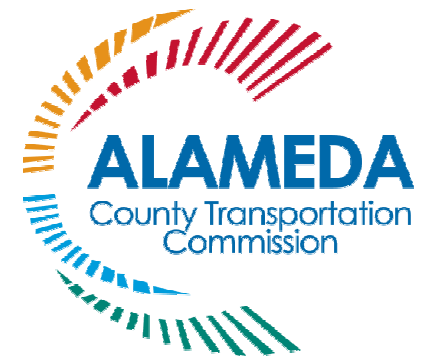
- Safety improvements for pedestrians
- Improve transit reliability
- Bus stop amenities





WOOLSEY-FULTON BIKE BOULEVARD & SHATTUCK-MLK BUS STOPS SAFETY PROJECTS FUNDING

- \$2.612M grant from State of California Affordable Housing and Sustainable Communities (AHSC) program
 - WFBB & SMBS Projects are the City's obligation toward AHSC funding for affordable housing private development at Adeline/Ashby.
- Alameda County Measures B& BB discretionary funds





WOOLSEY-FULTON BIKE BOULEVARD & SHATTUCK-MLK BUS STOPS SAFETY PROJECTS SCHEDULE

- Currently in **Conceptual Design** phase



Schedule is subject to change

- Finalize **concepts** in March 2024
- ~~■ City Council approval of **concepts** in March 2024~~
- Complete **design** by end of 2024
- **Construction** in 2025

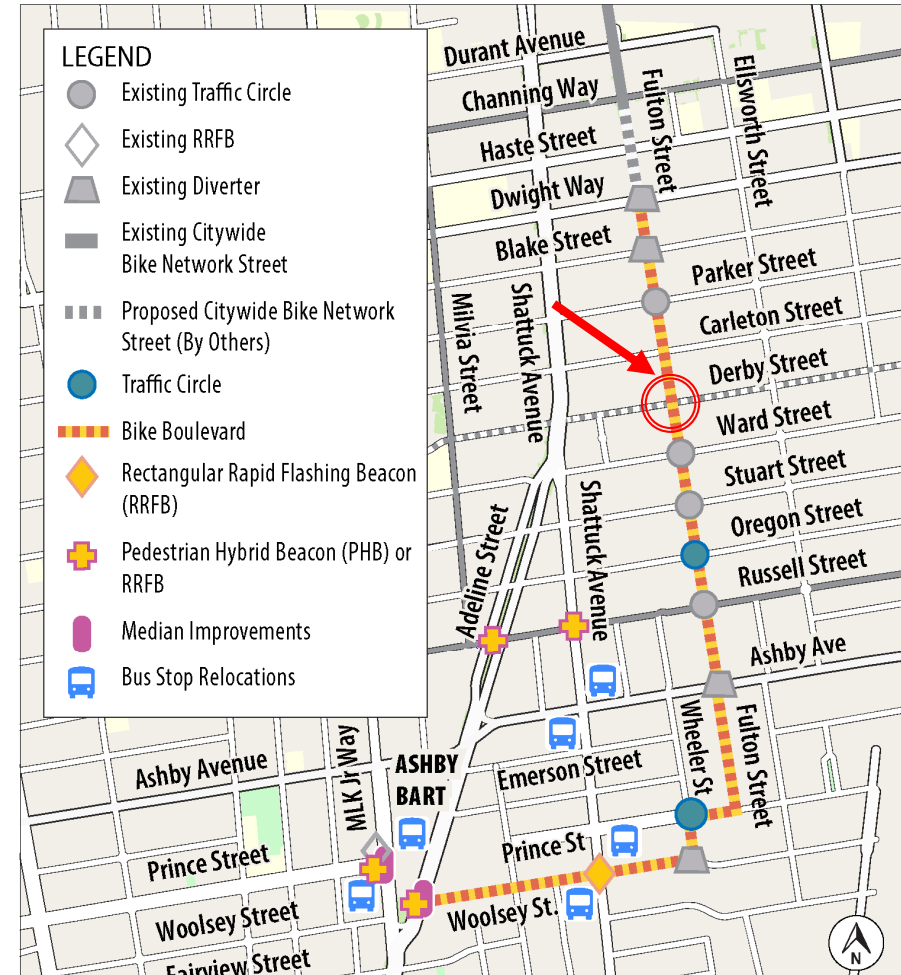
Note:
Markups based on the as-presented version by City staff during the February 15, 2024 Transportation & Infrastructure Commission meeting

Must complete construction by Q1 2026



WOOLSEY-FULTON BIKE BOULEVARD & SHATTUCK-MLK BUS STOPS SAFETY PROJECTS PUBLIC ENGAGEMENT TAKEAWAYS

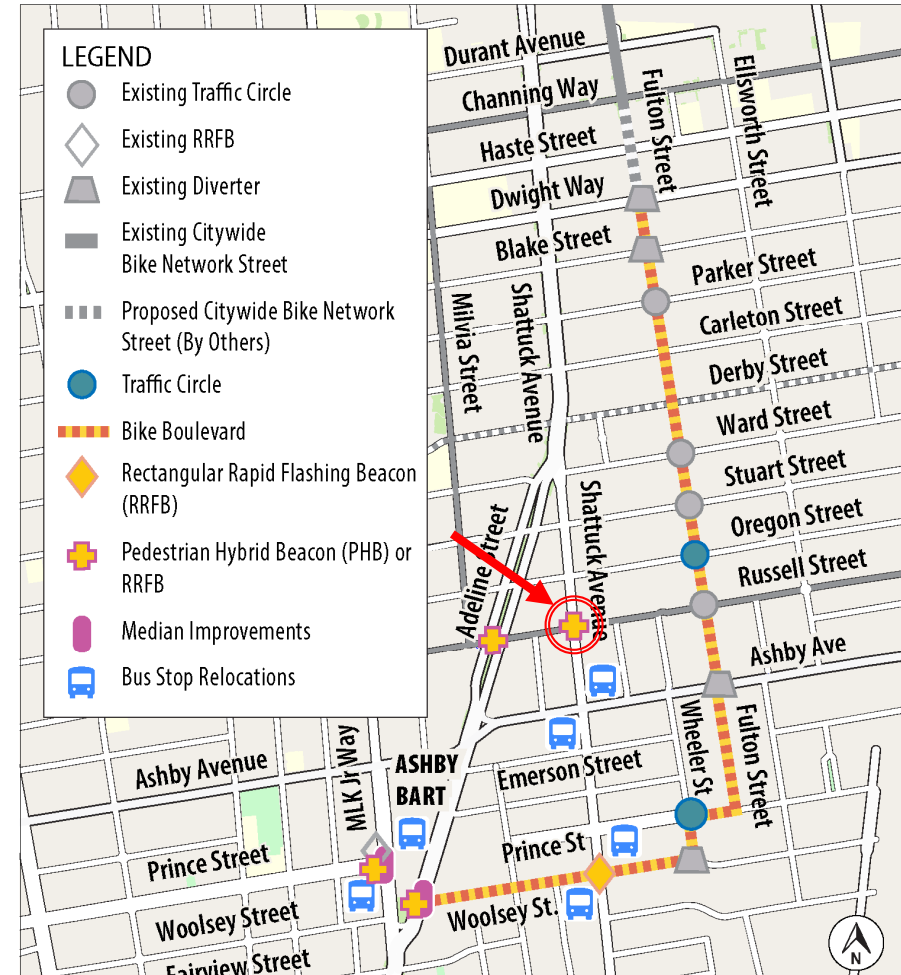
- Comment: Significant opposition to the proposed diverter at Fulton/Derby.
 - City: Removed from project scope
 - Diverter intended to balance vehicle volumes at intersection of 2 proposed bike boulevards
 - Will be studied in more detail as part of a future Derby bike boulevard





WOOLSEY-FULTON BIKE BOULEVARD & SHATTUCK-MLK BUS STOPS SAFETY PROJECTS PUBLIC ENGAGEMENT TAKEAWAYS

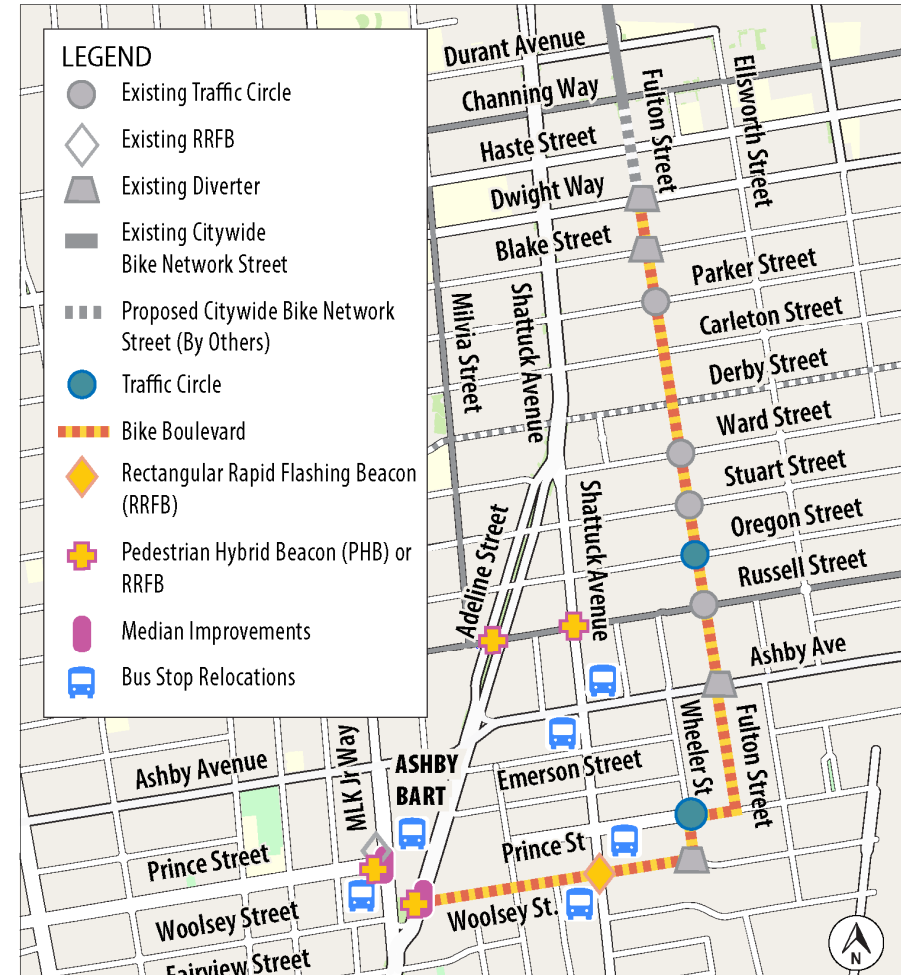
- Comment: Can a PHB be installed at Shattuck/Russell?
 - City: PHBs typically used for locations with multiple lane approaches
 - Shattuck/Russell is intersection of 2 two-lane streets
 - RRFB more appropriate at this location
 - Will look into relocating PHB to Shattuck/Russell and RRFB to Adeline/Russell





WOOLSEY-FULTON BIKE BOULEVARD & SHATTUCK-MLK BUS STOPS SAFETY PROJECTS PUBLIC ENGAGEMENT TAKEAWAYS

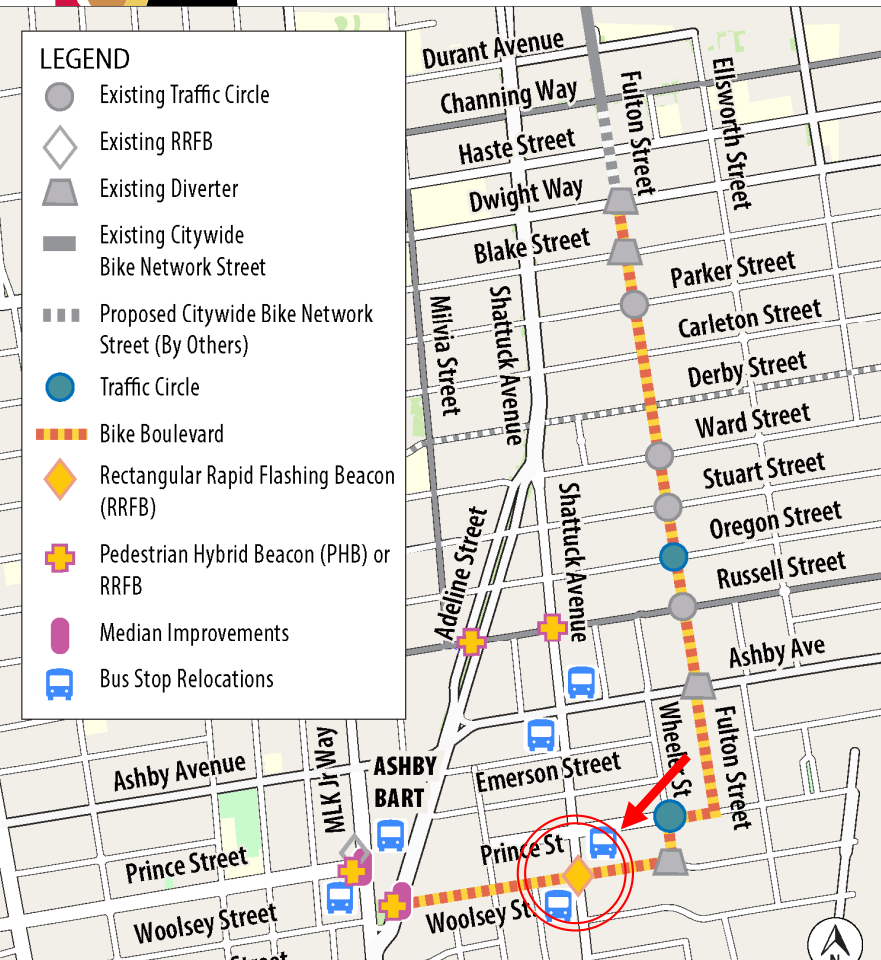
- Comment: Consider installing mid-block speed tables on every block of the proposed bike boulevard.
 - City: Require speed studies, consider emergency vehicles
 - Can review during detailed design phase
 - Several intersections have or will have traffic circles (5 in 7 blocks)





WOOLSEY-FULTON BIKE BOULEVARD & SHATTUCK-MLK BUS STOPS SAFETY PROJECTS

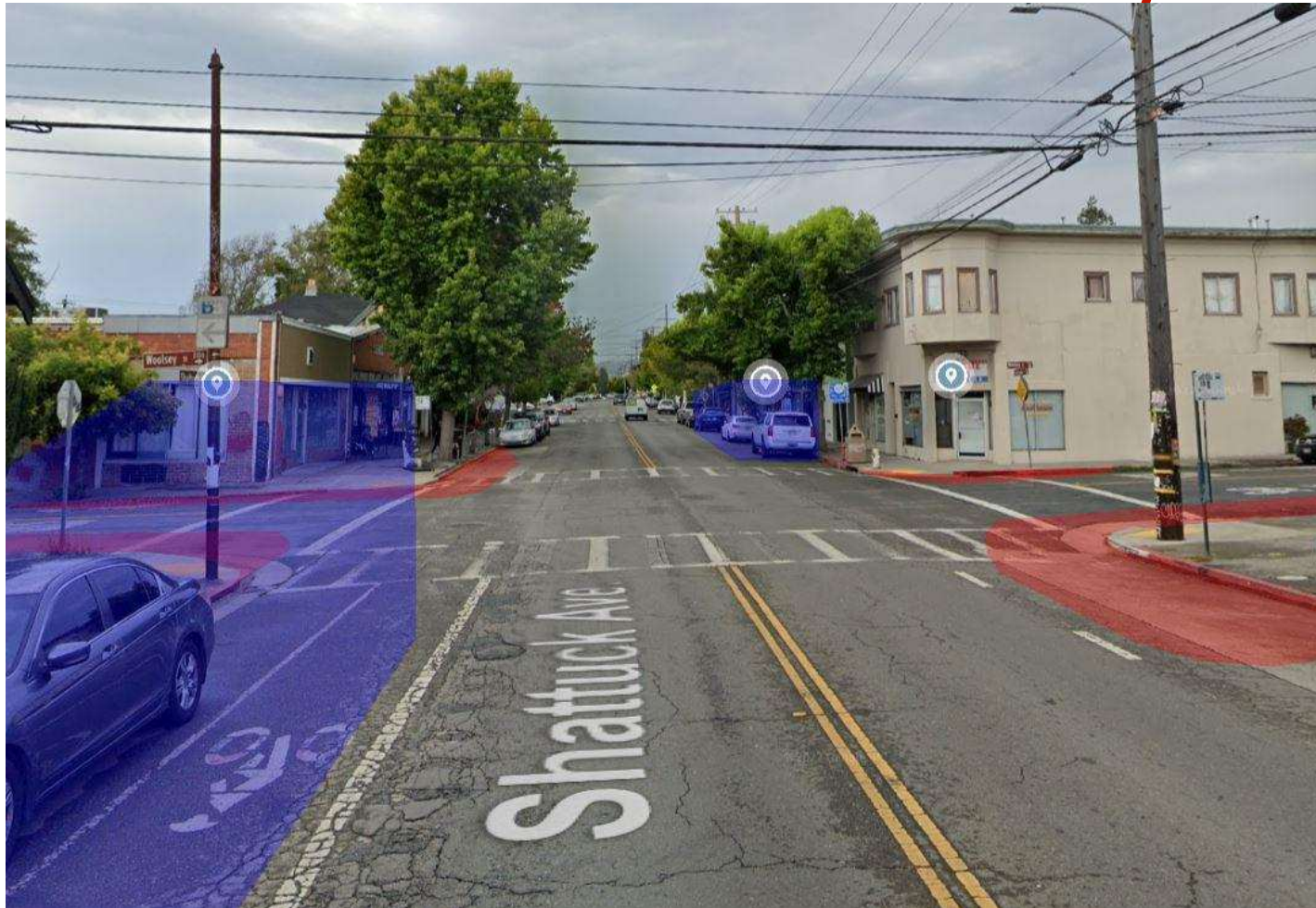
WOOLSEY STREET CORRIDOR – WOOLSEY/SHATTUCK



- RRFBs and sidewalk bulbouts at Woolsey/Shattuck intersection
- Woolsey St. is a proposed Bicycle Boulevard
- Bus stop relocations to far sides of intersection

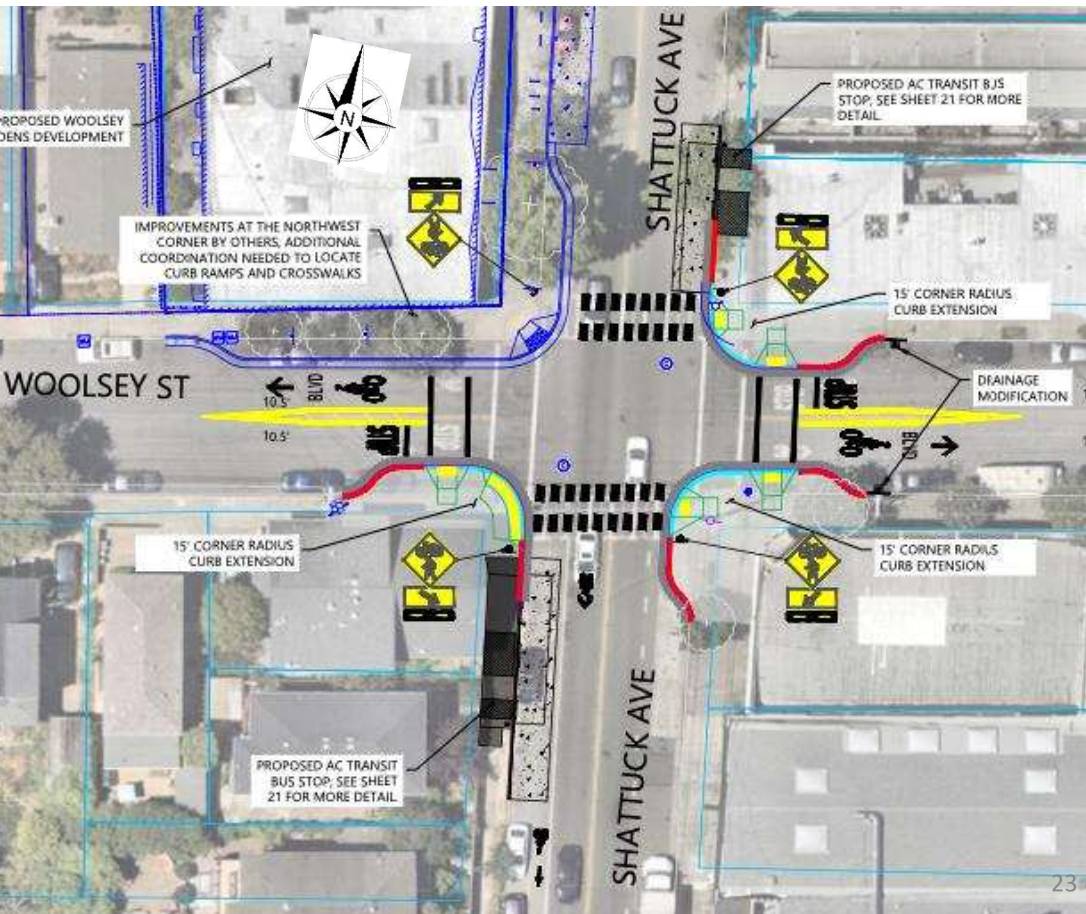


WOOLSEY-FULTON BIKE BOULEVARD & SHATTUCK-MLK BUS STOPS SAFETY PROJECTS WOOLSEY STREET CORRIDOR – WOOLSEY/SHATTUCK





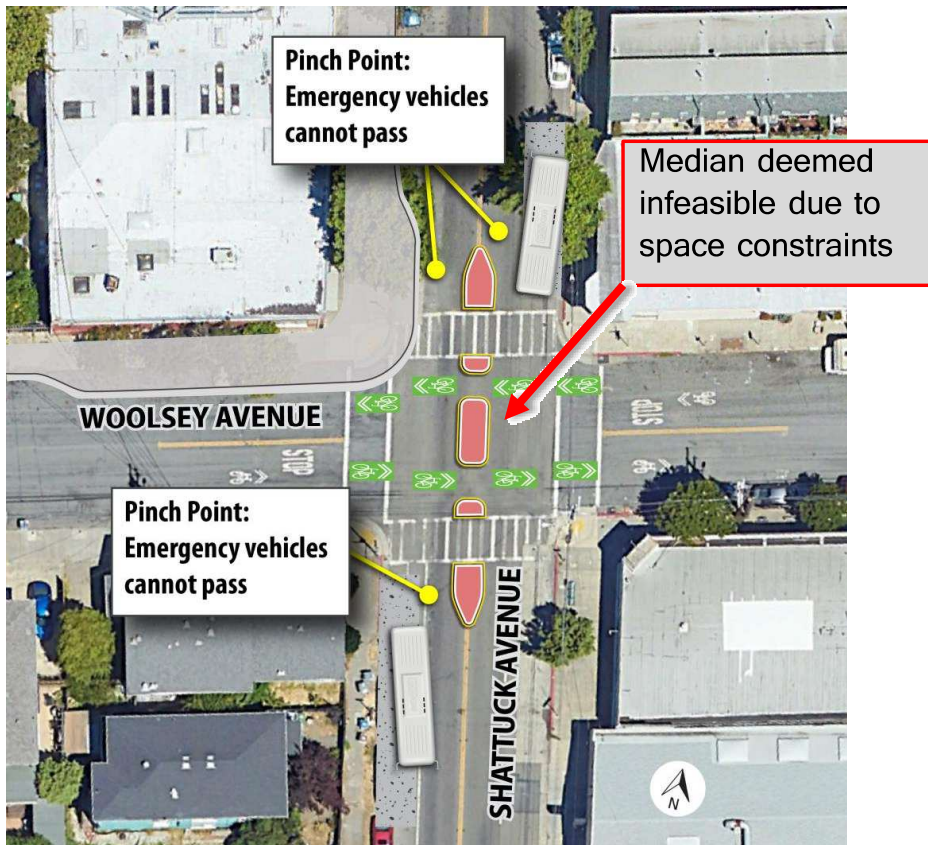
WOOLSEY-FULTON BIKE BOULEVARD & SHATTUCK-MLK BUS STOPS SAFETY PROJECTS WOOLSEY STREET CORRIDOR – WOOLSEY/SHATTUCK



- RRFB buttons at curb ramps and reachable by bicyclists
- Bus Stops move to far sides of intersection on Shattuck Ave.
 - Bus stop amenities TBD depending on available space
- Coordinating with development project at northwest corner



WOOLSEY-FULTON BIKE BOULEVARD & SHATTUCK-MLK BUS STOPS SAFETY PROJECTS WOOLSEY STREET CORRIDOR – WOOLSEY/SHATTUCK

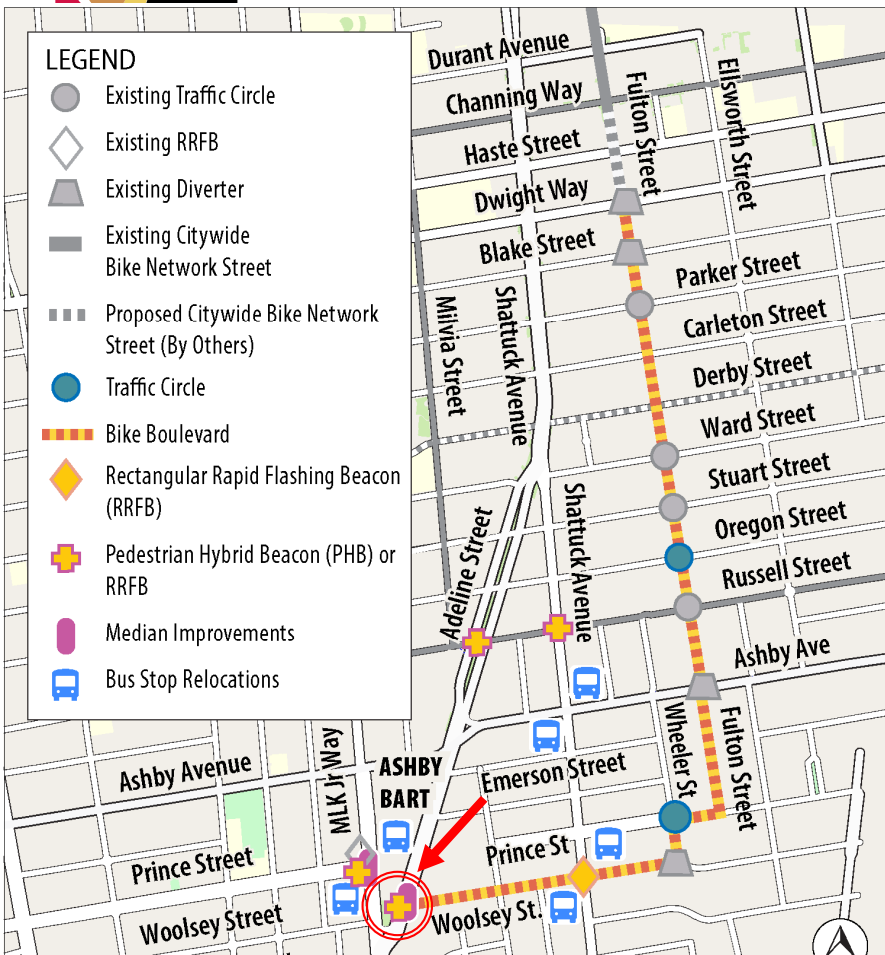


Infeasible to install a median refuge due to space constraints:

- Bus stops
- Curb extensions at NW corner
- Turn movements for emergency and solid waste vehicles



WOOLSEY-FULTON BIKE BOULEVARD & SHATTUCK-MLK BUS STOPS SAFETY PROJECTS WOOLSEY STREET CORRIDOR – WOOLSEY/ADELINE



- PHB/RRFB and median improvements at Woolsey/Adeline intersection
- Consider future Adeline Corridor project
- Connection to Ashby BART station
- Coordinating with upcoming BART bicycle access improvements work at Ashby station

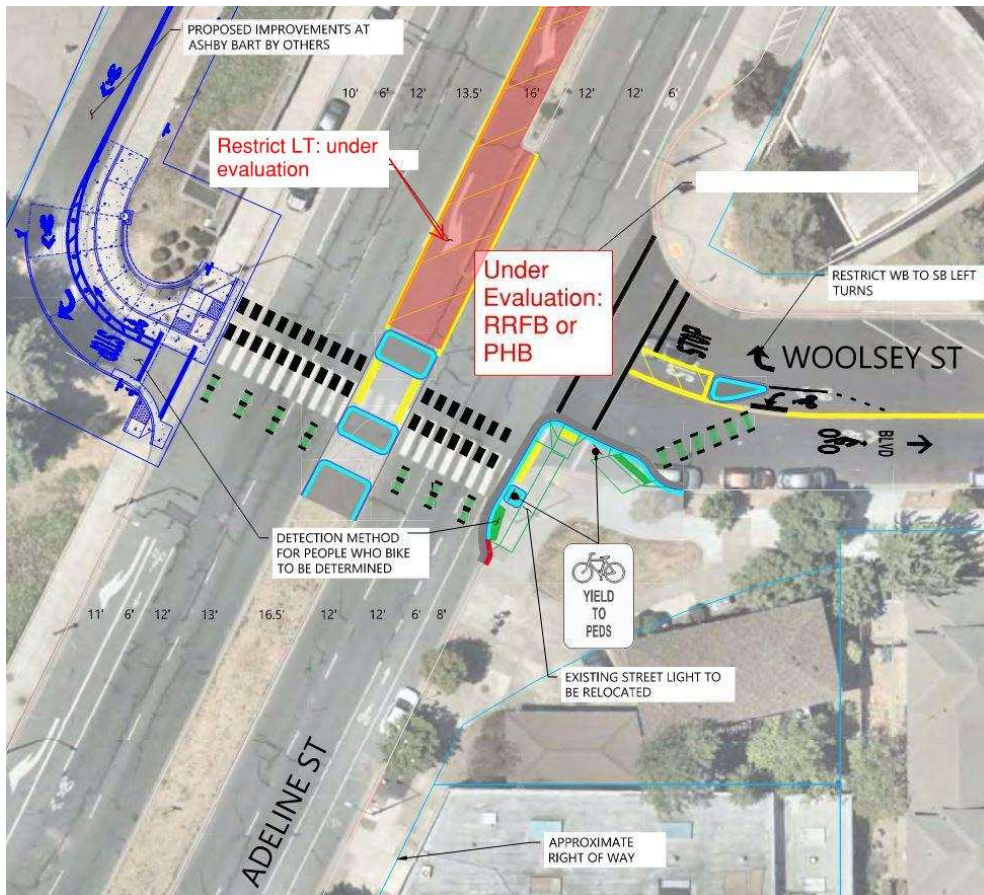


WOOLSEY-FULTON BIKE BOULEVARD & SHATTUCK-MLK BUS STOPS SAFETY PROJECTS WOOLSEY STREET CORRIDOR – WOOLSEY/ADELINE





WOOLSEY-FULTON BIKE BOULEVARD & SHATTUCK-MLK BUS STOPS SAFETY PROJECTS WOOLSEY STREET CORRIDOR – WOOLSEY/ADELINE

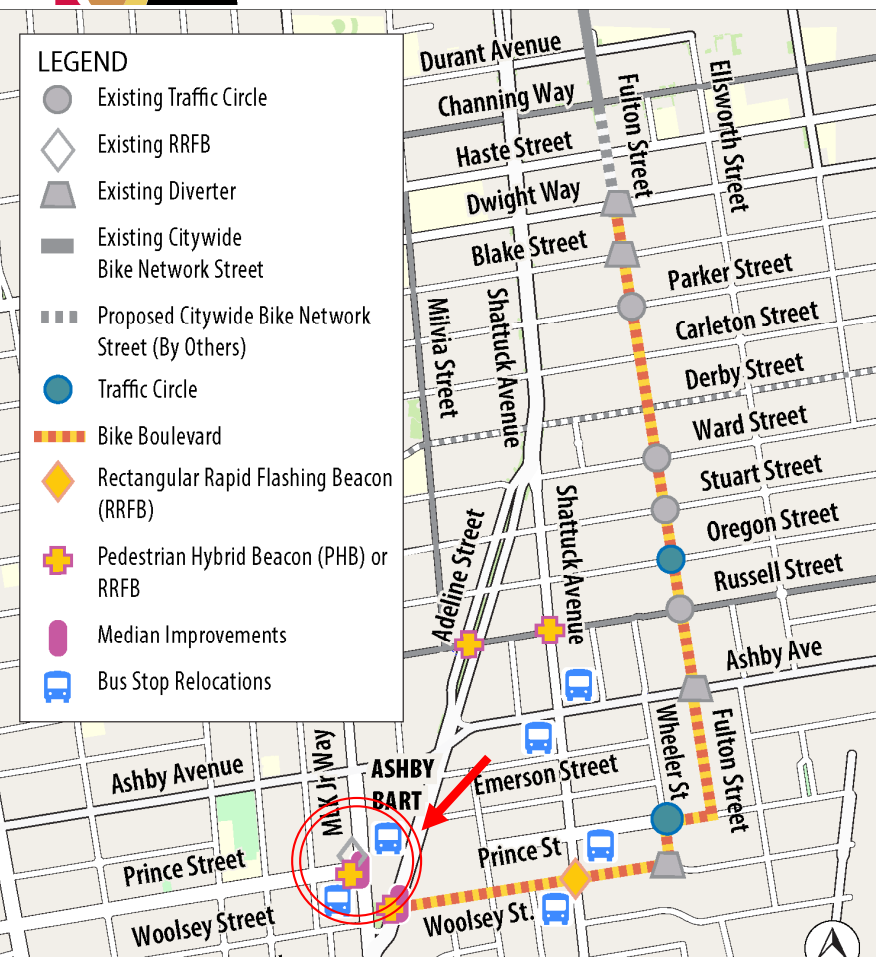


- PHB is per recommendation in Bicycle Plan
 - Evaluated for suitability at this intersection
- Considering RRFB (swap PHB/RRFB with MLK/Prince)
 - Future Adeline project
- Left turn restriction on westbound Woolsey
 - Evaluating potential left turn restriction on southbound Adeline
- Separated pedestrian and bike crossing across Adeline



WOOLSEY-FULTON BIKE BOULEVARD & SHATTUCK-MLK BUS STOPS SAFETY PROJECTS

MLK/PRINCE INTERSECTION



- Reuse existing RRFBs
- Considering PHB (swap PHB/RRFB with Adeline/Woolsey)
- Median refuges and sidewalk bulbouts
- Bus stop relocations to far sides of intersection



WOOLSEY-FULTON BIKE BOULEVARD & SHATTUCK-MLK BUS STOPS SAFETY PROJECTS MLK/PRINCE INTERSECTION



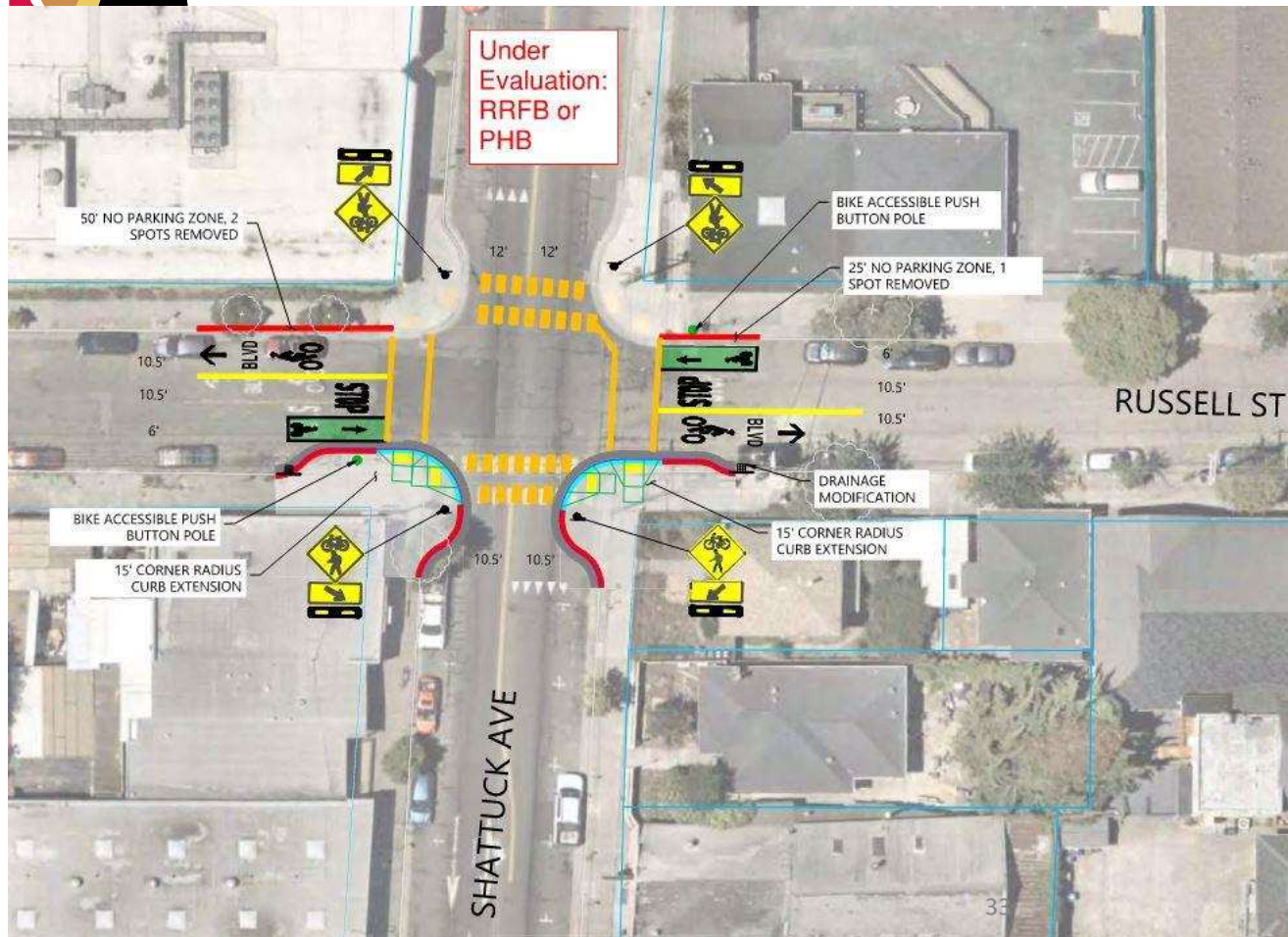


WOOLSEY-FULTON BIKE BOULEVARD & SHATTUCK-MLK BUS STOPS SAFETY PROJECTS RUSSELL STREET CORRIDOR – RUSSELL/SHATTUCK





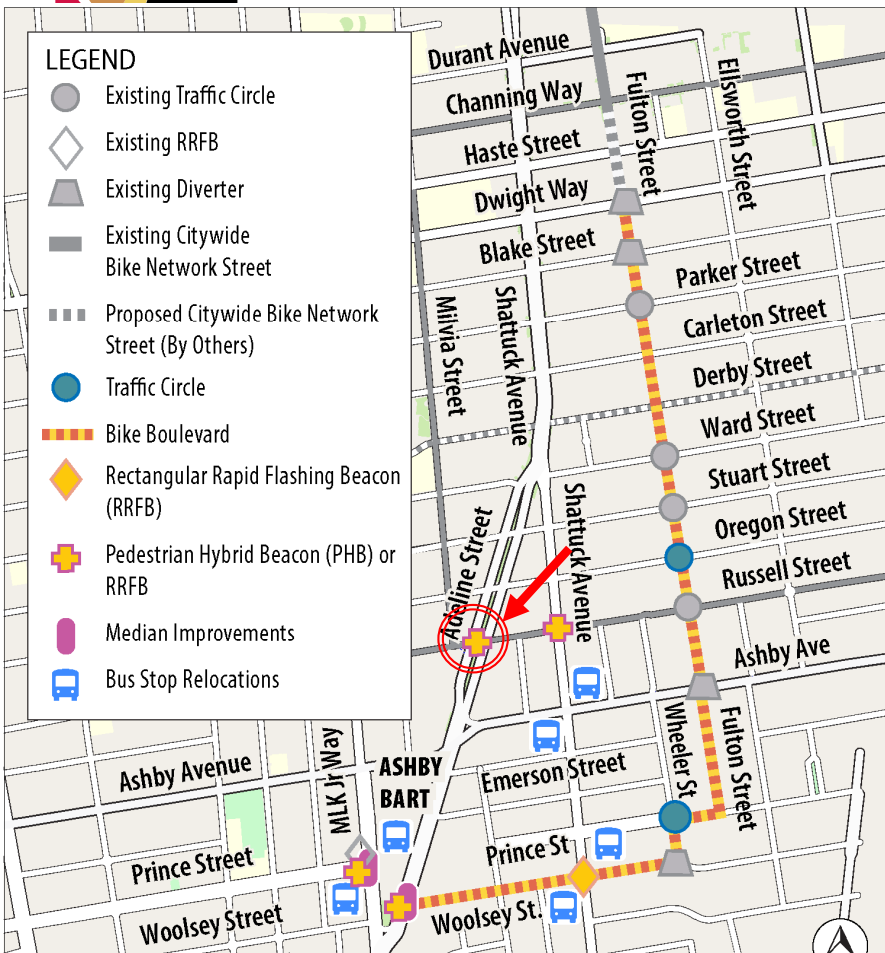
WOOLSEY-FULTON BIKE BOULEVARD & SHATTUCK-MLK BUS STOPS SAFETY PROJECTS RUSSELL STREET CORRIDOR – RUSSELL/SHATTUCK



- Existing curb ramps at northwest and northeast corners
- New curb ramps at southwest and southeast corners
- RRFB buttons at curb ramps and reachable by bicyclists



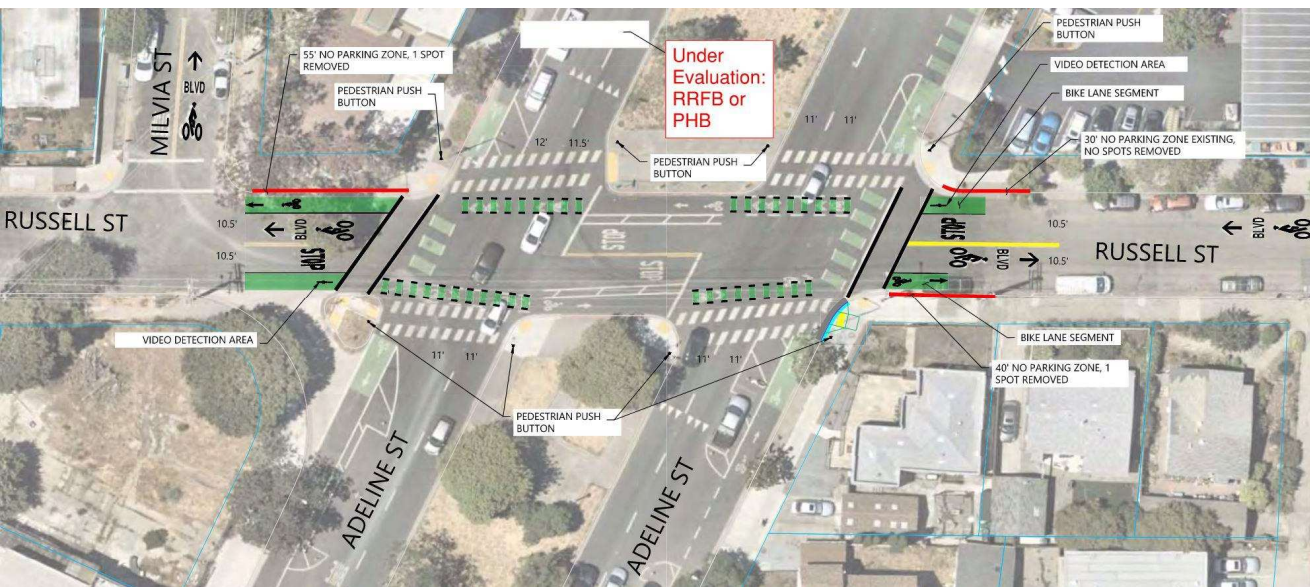
WOOLSEY-FULTON BIKE BOULEVARD & SHATTUCK-MLK BUS STOPS SAFETY PROJECTS RUSSELL STREET CORRIDOR – RUSSELL/ADELINE



- PHB at Russell/Adeline intersection
- PHB is per recommendation in Bicycle Plan
 - Evaluated for suitability at this intersection
- Considering RRFB (swap RRFB/PHB with Shattuck/Russell)
 - Depends in part on operational issues
- Russell St. is a Bicycle Boulevard



WOOLSEY-FULTON BIKE BOULEVARD & SHATTUCK-MLK BUS STOPS SAFETY PROJECTS RUSSELL STREET CORRIDOR –RUSSELL/ADELINE



- Long crossing – evaluating one- vs. two-stage PHB/RRFB activation
- Consider multiple conflict points and width of median
- Connects to Milvia St. Bicycle Boulevard and Adeline St. bike lanes



WOOLSEY-FULTON BIKE BOULEVARD & SHATTUCK-MLK BUS STOPS SAFETY PROJECTS

FOR MORE INFORMATION

- **WFBB Project Website**

<https://berkeleyca.gov/your-government/our-work/capital-projects/woolsey-fulton-bicycle-boulevard-project-wfbb>

- **SMBS Project Website**

<https://berkeleyca.gov/your-government/our-work/capital-projects/shattuck-mlk-bus-stops-project>