



# WOOLSEY-FULTON BIKE BOULEVARD & SHATTUCK-MLK BUS STOPS SAFETY PROJECTS

COMMUNITY MEETING ON JANUARY 31, 2024; 6 – 8 PM  
PUBLIC WORKS DEPARTMENT - TRANSPORTATION DIVISION

Hosted by:

David Hoffman, Planner, Parametrix, Inc.

With support from:

Olga Rodriguez, Project Manager, City of Berkeley



# WOOLSEY-FULTON BIKE BOULEVARD & SHATTUCK-MLK BUS STOPS SAFETY PROJECTS

## WELCOME & AGENDA

- Introductions, Purpose, & Housekeeping
- Overview of Projects
- Review of Concept Sketches
- Public Comments & Questions





# WOOLSEY-FULTON BIKE BOULEVARD & SHATTUCK-MLK BUS STOPS SAFETY PROJECTS INTRODUCTIONS

- **David Hoffman**  
Planner, Parametrix
- **Olga Rodriguez**  
Project Manager, City of Berkeley



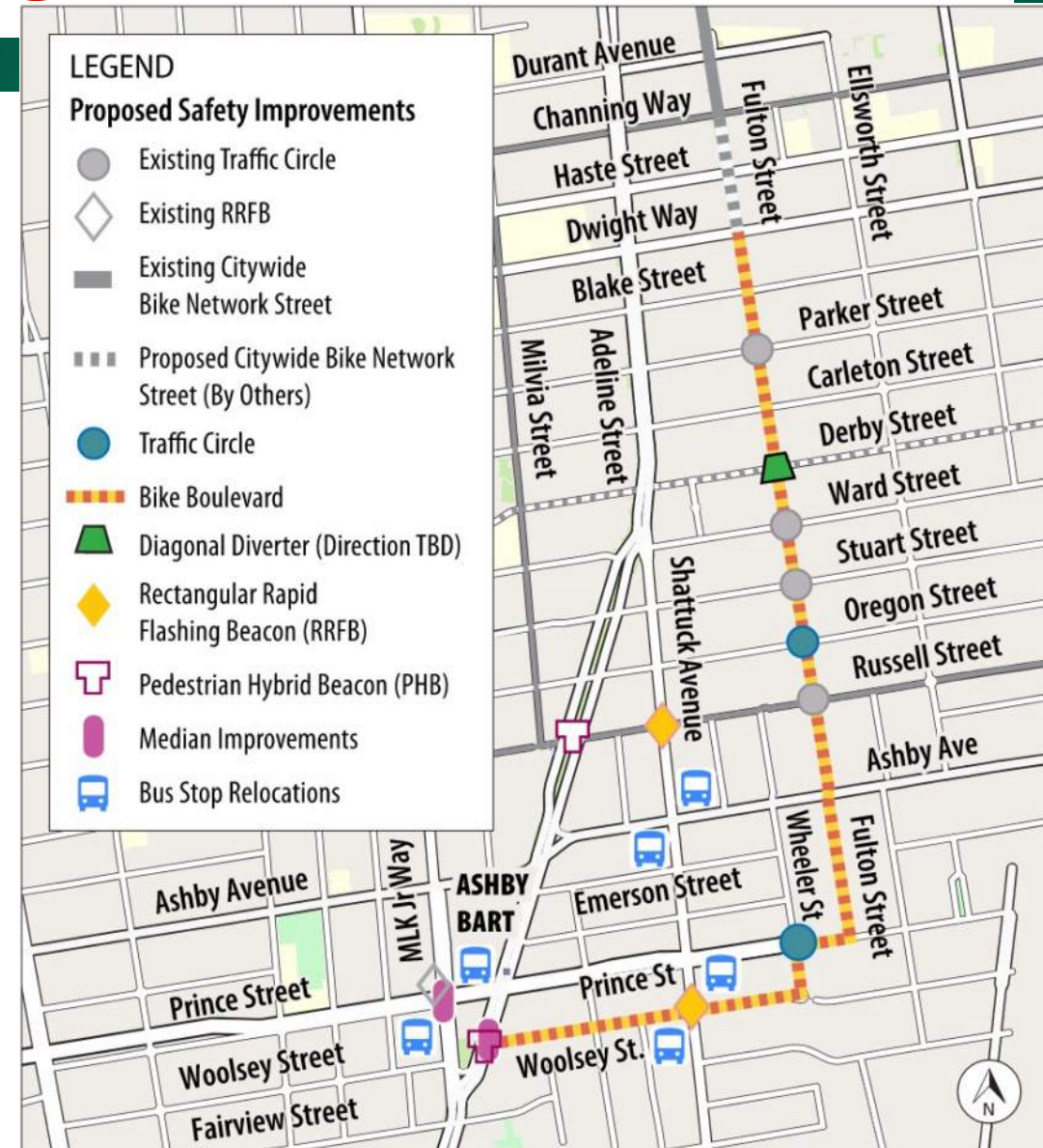




# WOOLSEY-FULTON BIKE BOULEVARD & SHATTUCK-MLK BUS STOPS SAFETY PROJECTS

## PURPOSE OF THIS MEETING

1. Explain rationale and considerations in preparing proposed concept sketches
2. Solicit input from the public to finalize the concept sketches





# WOOLSEY-FULTON BIKE BOULEVARD & SHATTUCK-MLK BUS STOPS SAFETY PROJECTS

## GROUND RULES & HOUSEKEEPING

- Meeting will be recorded
- 2-hour meeting: 6 – 8 PM
- City will present first, then open to public comments and questions
- To speak: raise hand. When called upon, un-mute your microphone.





## WOOLSEY-FULTON BIKE BOULEVARD & SHATTUCK-MLK BUS STOPS SAFETY PROJECTS

# OVERVIEW OF PROJECTS

- Safety improvements for pedestrians, bicyclists, and transit riders
- Fills gap in Citywide bike network
- Bus stop relocations to improve vehicle conflicts and sight lines
- Coordination with other projects:
  - Ashby BART bike access improvements
  - Private development projects at Woolsey/Shattuck & Ashby/Shattuck

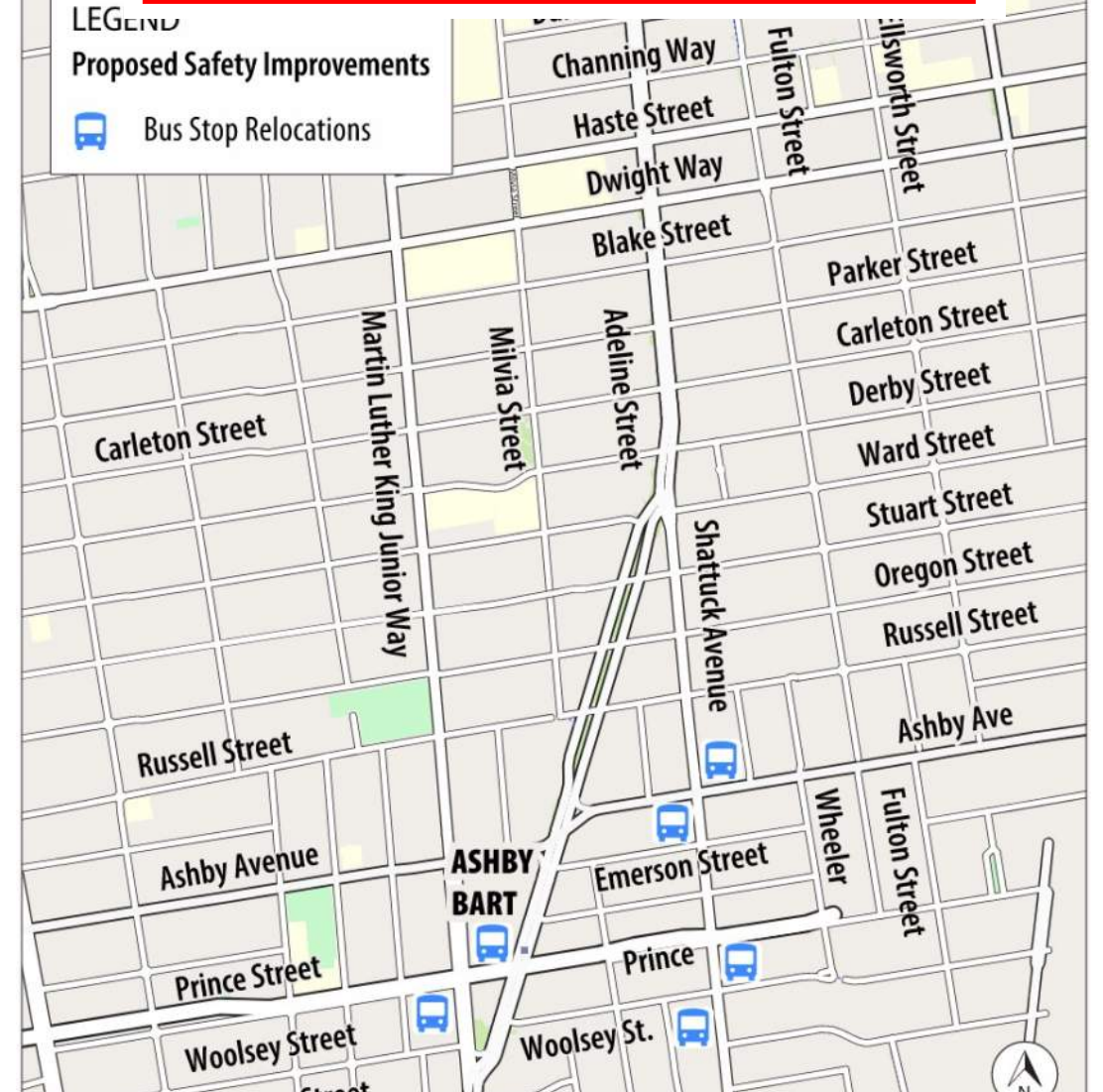


# WOOLSEY-FULTON BIKE BOULEVARD & SHATTUCK-MLK BUS STOPS SAFETY PROJECTS OVERVIEW OF PROJECTS

## Woolsey-Fulton Bike Boulevard Project



## Shattuck-MLK Bus Stops Project







# WOOLSEY-FULTON BIKE BOULEVARD & SHATTUCK-MLK BUS STOPS SAFETY PROJECTS DESIGN ELEMENTS



Bicycle Boulevard



Diagonal Traffic Diverter





# WOOLSEY-FULTON BIKE BOULEVARD & SHATTUCK-MLK BUS STOPS SAFETY PROJECTS DESIGN ELEMENTS



Traffic Circle



Rectangular Rapid  
Flashing Beacons (RRFBs)



# WOOLSEY-FULTON BIKE BOULEVARD & SHATTUCK-MLK BUS STOPS SAFETY PROJECTS DESIGN ELEMENTS



Pedestrian Hybrid  
Beacons (PHBs)



Median Improvements

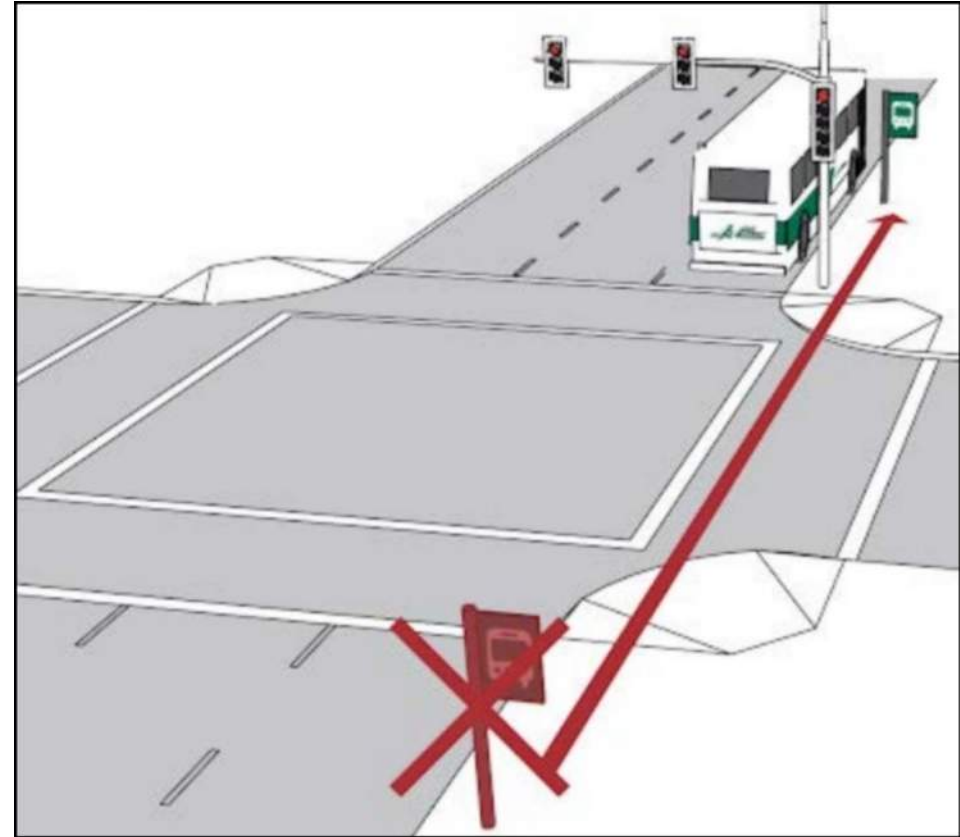




# WOOLSEY-FULTON BIKE BOULEVARD & SHATTUCK-MLK BUS STOPS SAFETY PROJECTS DESIGN ELEMENTS



Sidewalk Bulb Out



Bus Stop Relocation





# WOOLSEY-FULTON BIKE BOULEVARD & SHATTUCK-MLK BUS STOPS SAFETY PROJECTS DESIGN CONSIDERATIONS

## Fire Department

- Minimum lane width
- Roadway clear space
- Emergency access routes
- Response times
- Vehicle turning/maneuverability

## Access for other large vehicles

- AC Transit buses
- Waste collection trucks
- School buses







# WOOLSEY-FULTON BIKE BOULEVARD & SHATTUCK-MLK BUS STOPS SAFETY PROJECTS

## PROJECT ORIGIN

2020 PEDESTRIAN PLAN

CITY OF BERKELEY

CITY OF BERKELEY  
**BICYCLE  
PLAN**

Approved May 2, 2017 by Berkeley City Council

CITY OF BERKELEY  
VISION ZERO ACTION PLAN

Approved March 10, 2019  
by the Berkeley City Council

Berkeley Strategic  
Transportation Plan

Project origins can be found in the City's:

- Bicycle Plan
- Pedestrian Plan
- Strategic Transportation Plan
- Vision Zero Action Plan
- Transit-First Policy



## WOOLSEY-FULTON BIKE BOULEVARD & SHATTUCK-MLK BUS STOPS SAFETY PROJECTS

# SAFETY

- Pedestrian and bicyclist safety improvements are generally achieved by implementing traffic calming measures (traffic circles, diverters), warning signals (RRFBs), and traffic controls (PHBs, traffic signals, and STOP signs) at intersections.
- These projects utilize the aforementioned design elements to improve safety for pedestrians, bicyclists, and transit riders.





## WOOLSEY-FULTON BIKE BOULEVARD & SHATTUCK-MLK BUS STOPS SAFETY PROJECTS FUNDING

- \$2.612M grant from State of California Affordable Housing and Sustainable Communities (AHSC) program
  - Linked to funding for affordable housing private developments at San Pablo/Blake and Adeline/Ashby.
- Alameda County Measures B& BB discretionary funds





# WOOLSEY-FULTON BIKE BOULEVARD & SHATTUCK-MLK BUS STOPS SAFETY PROJECTS SCHEDULE

- Currently in **Conceptual Design** phase



Schedule is subject to change

- Finalize **concepts** in February 2024
- City Council approval of **concepts** in March 2024
- Complete **design** by end of 2024
- Begin **construction** in 2025





# WOOLSEY-FULTON BIKE BOULEVARD & SHATTUCK-MLK BUS STOPS SAFETY PROJECTS PROJECTS OVERVIEW

Map shows combined work:

- Woolsey-Fulton Bike Boulevard Project
- Shattuck-MLK Bus Stop Project







# WOOLSEY-FULTON BIKE BOULEVARD & SHATTUCK-MLK BUS STOPS SAFETY PROJECTS FULTON STREET CORRIDOR

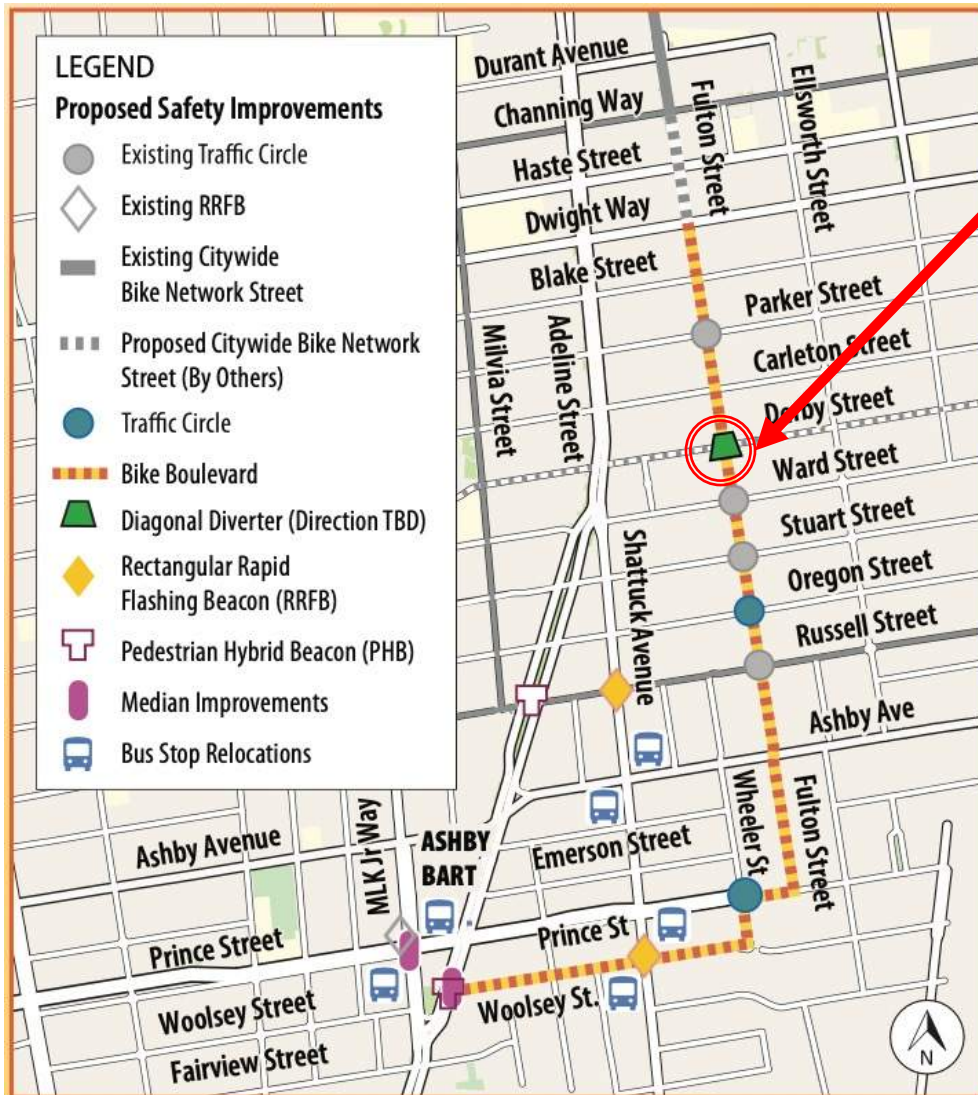


- Bike Boulevard
  - Traffic calming
    - Diagonal diverter (lower vehicle volumes)
    - Traffic circles
  - Pavement markings
  - Wayfinding signage



# WOOLSEY-FULTON BIKE BOULEVARD & SHATTUCK-MLK BUS STOPS SAFETY PROJECTS

## FULTON STREET CORRIDOR – FULTON/DERBY



- Diagonal Diverter at Fulton/Derby intersection
- Fulton and Derby are planned Bike Boulevards per the Bicycle Plan
- Diverter recommended in Bicycle Plan
- Traffic evaluation performed





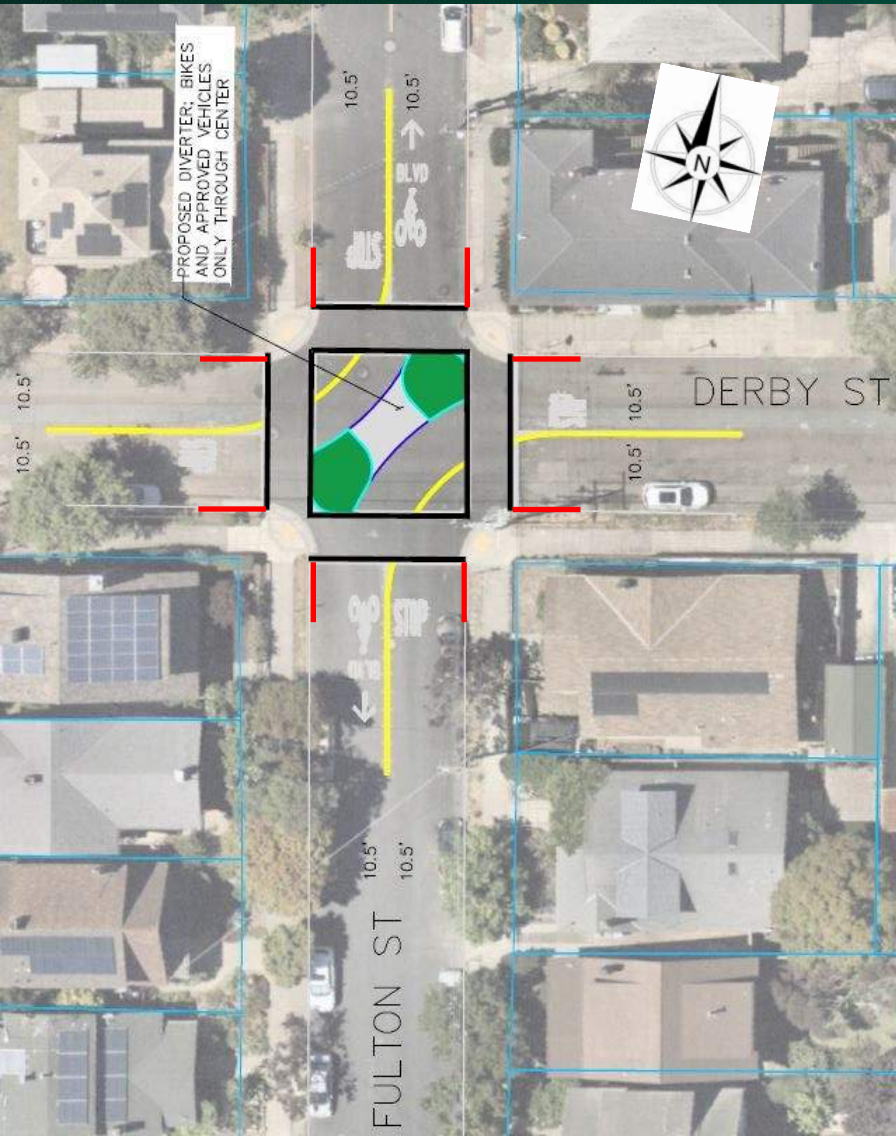
# WOOLSEY-FULTON BIKE BOULEVARD & SHATTUCK-MLK BUS STOPS SAFETY PROJECTS FULTON STREET CORRIDOR – FULTON/DERBY





# WOOLSEY-FULTON BIKE BOULEVARD & SHATTUCK-MLK BUS STOPS SAFETY PROJECTS

## FULTON STREET CORRIDOR – FULTON/DERBY

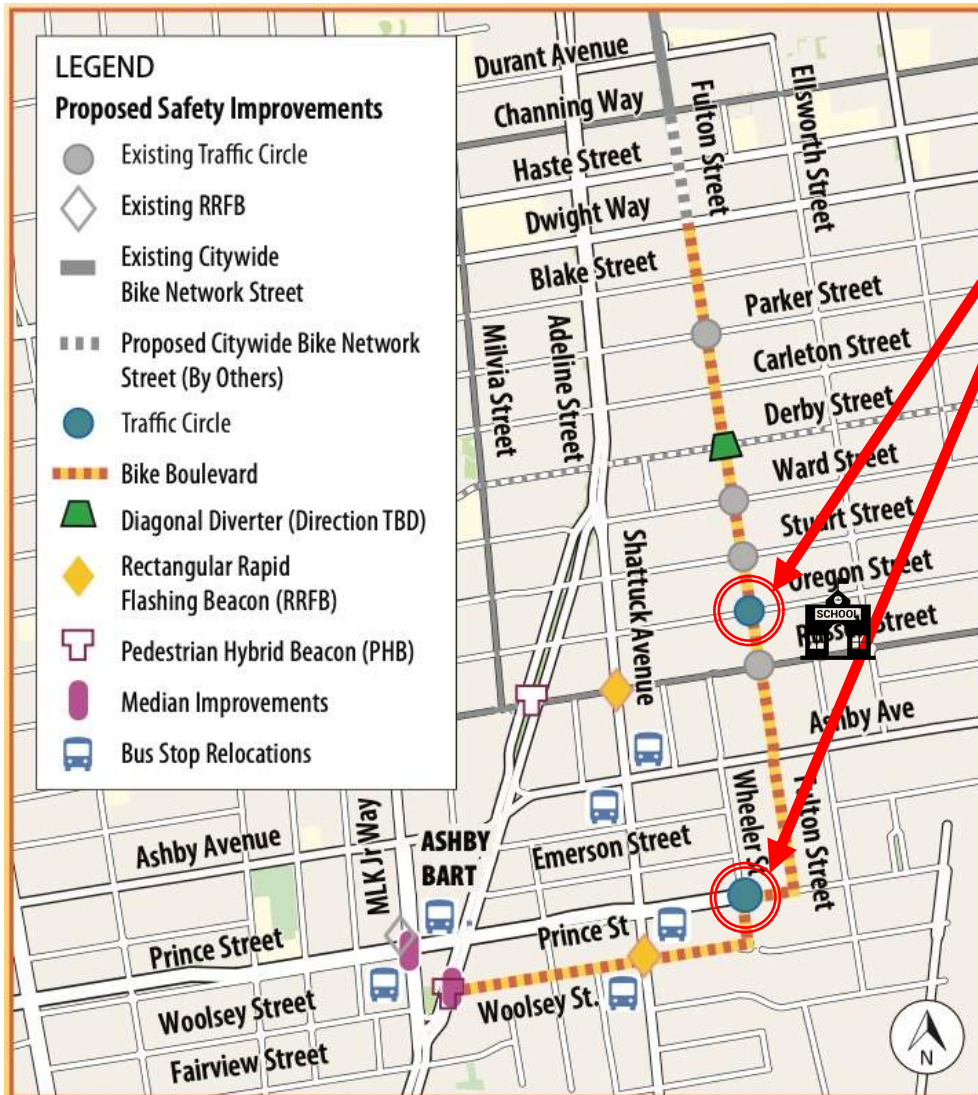


- Diverter oriented from southwest corner to northeast corner
- Traffic analysis:
  - Traffic counts
    - Strikes balance in diverting vehicles
    - Opposite orientation would divert more vehicles and imbalance vehicles volumes
  - Discourage use of Fulton as vehicle route to Sylvia Mendez Elementary School



# WOOLSEY-FULTON BIKE BOULEVARD & SHATTUCK-MLK BUS STOPS SAFETY PROJECTS

## FULTON STREET CORRIDOR – TRAFFIC CIRCLES



- Traffic Circles at Fulton/Oregon and Wheeler/Prince intersections
- Recommended in Bicycle Plan
- Note location of Sylvia Mendez Elementary School on map



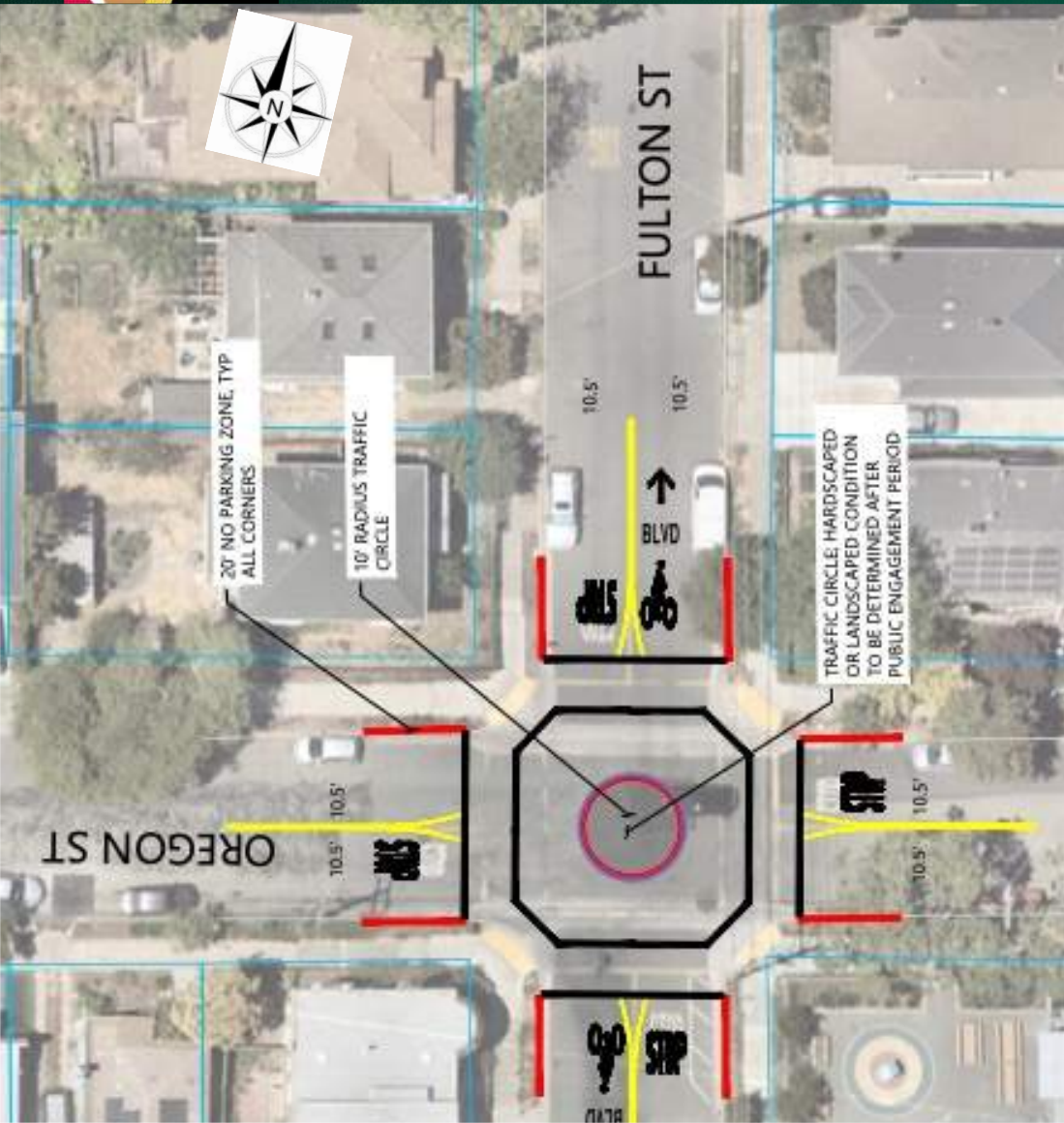
# WOOLSEY-FULTON BIKE BOULEVARD & SHATTUCK-MLK BUS STOPS SAFETY PROJECTS FULTON STREET CORRIDOR – FULTON/OREGON





# WOOLSEY-FULTON BIKE BOULEVARD & SHATTUCK-MLK BUS STOPS SAFETY PROJECTS

## FULTON STREET CORRIDOR – FULTON/OREGON



- Fulton/Oregon Traffic Circle
- Traffic calming of vehicles on school bus route to/from Sylvia Mendez Elementary School





# WOOLSEY-FULTON BIKE BOULEVARD & SHATTUCK-MLK BUS STOPS SAFETY PROJECTS WHEELER/ PRINCE TRAFFIC CIRCLE

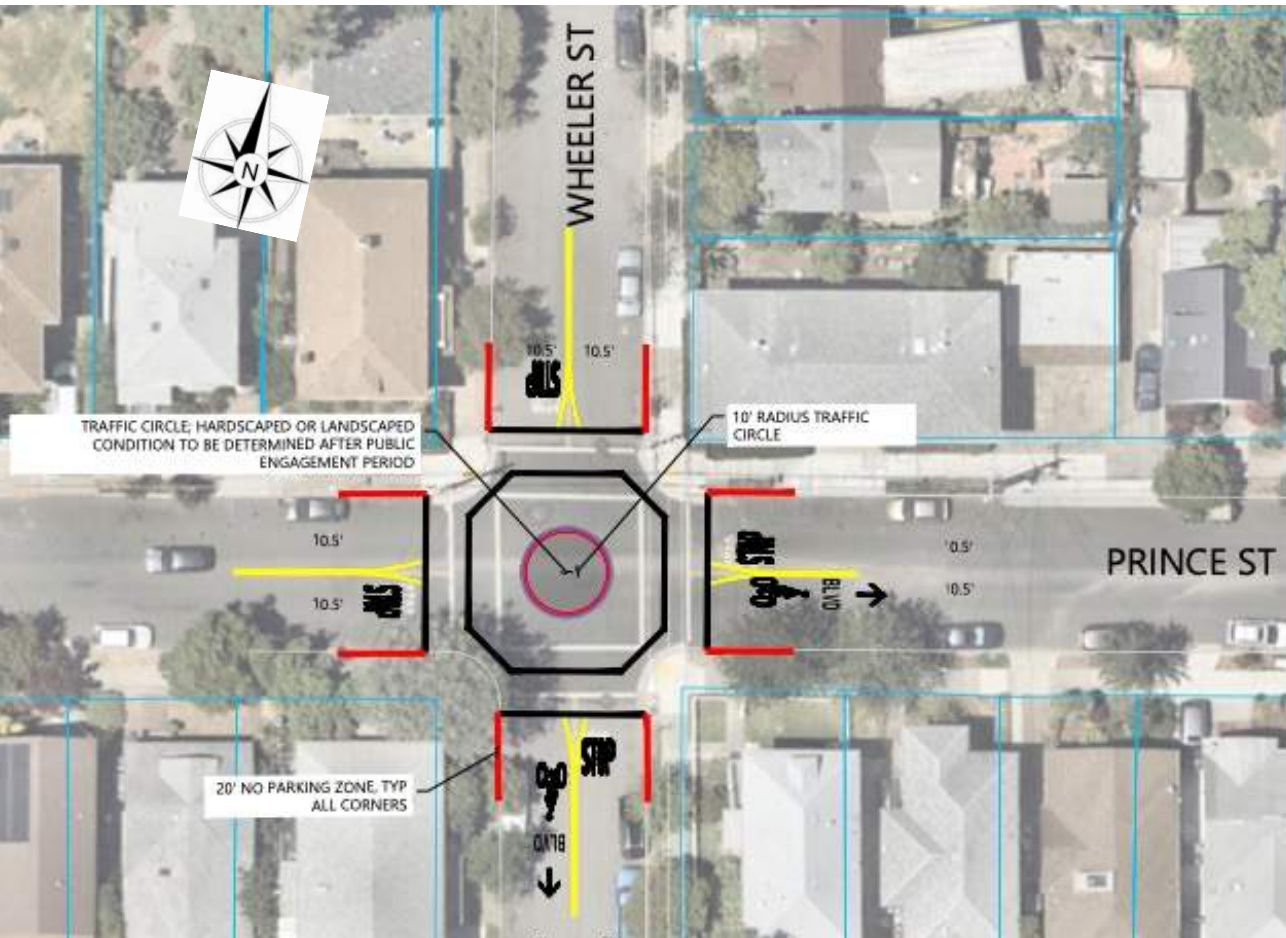






# WOOLSEY-FULTON BIKE BOULEVARD & SHATTUCK-MLK BUS STOPS SAFETY PROJECTS

## WHEELER/ PRINCE TRAFFIC CIRCLE



- Wheeler/Prince Traffic Circle
- Prince St. is a proposed Bicycle Boulevard between Wheeler St. and Fulton St.
- Neighborhood interest in selecting and maintaining plantings in traffic circles?

# WOOLSEY-FULTON BIKE BOULEVARD & SHATTUCK-MLK BUS STOPS SAFETY PROJECTS

## WOOLSEY STREET CORRIDOR – WOOLSEY/SHATTUCK



- RRFBs and sidewalk bulbouts at Woolsey/Shattuck intersection
- Woolsey St. is a proposed Bicycle Boulevard
- Bus stop relocations to far sides of intersection



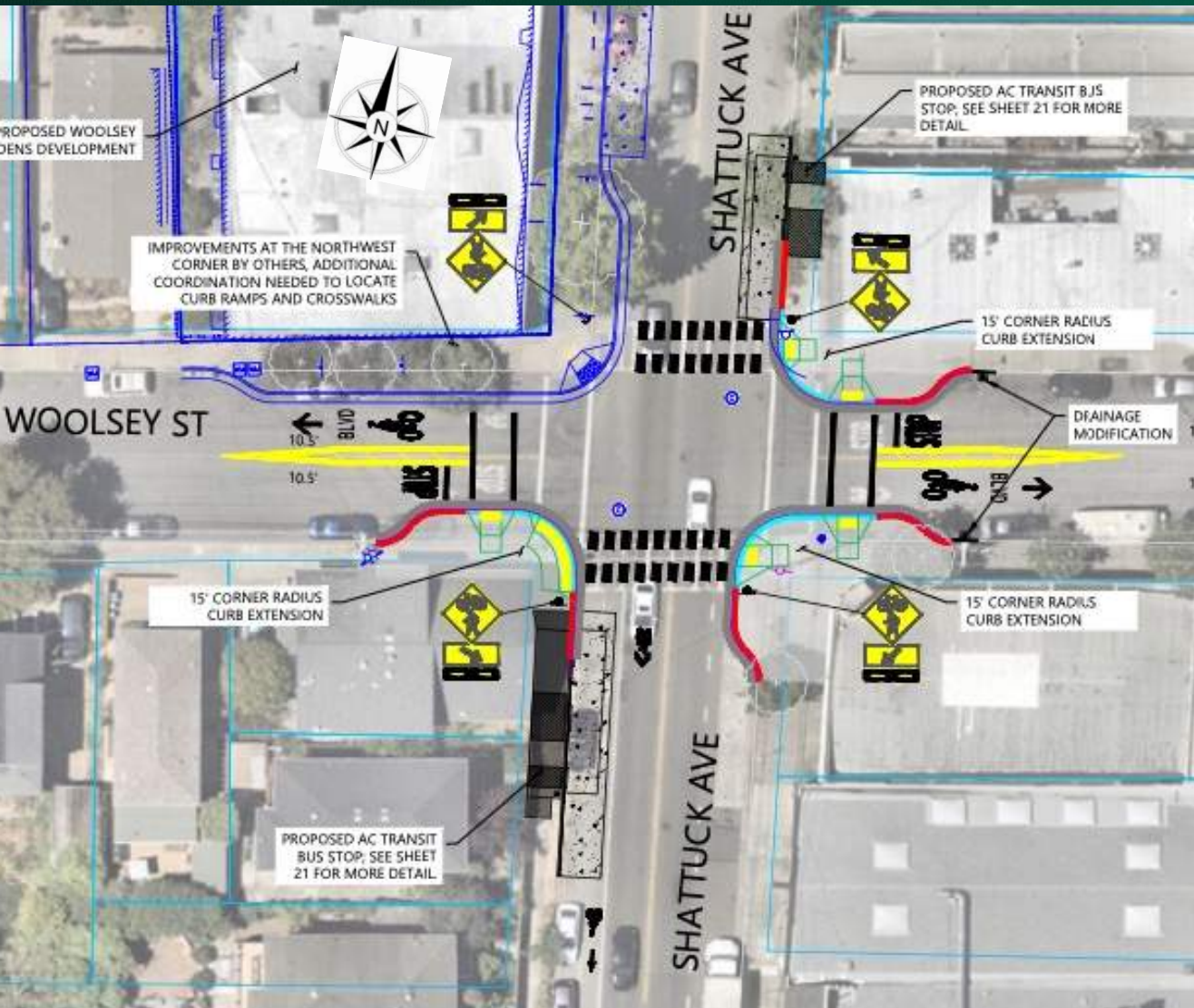


# WOOLSEY-FULTON BIKE BOULEVARD & SHATTUCK-MLK BUS STOPS SAFETY PROJECTS WOOSLEY STREET CORRIDOR – WOOLSEY/SHATTUCK





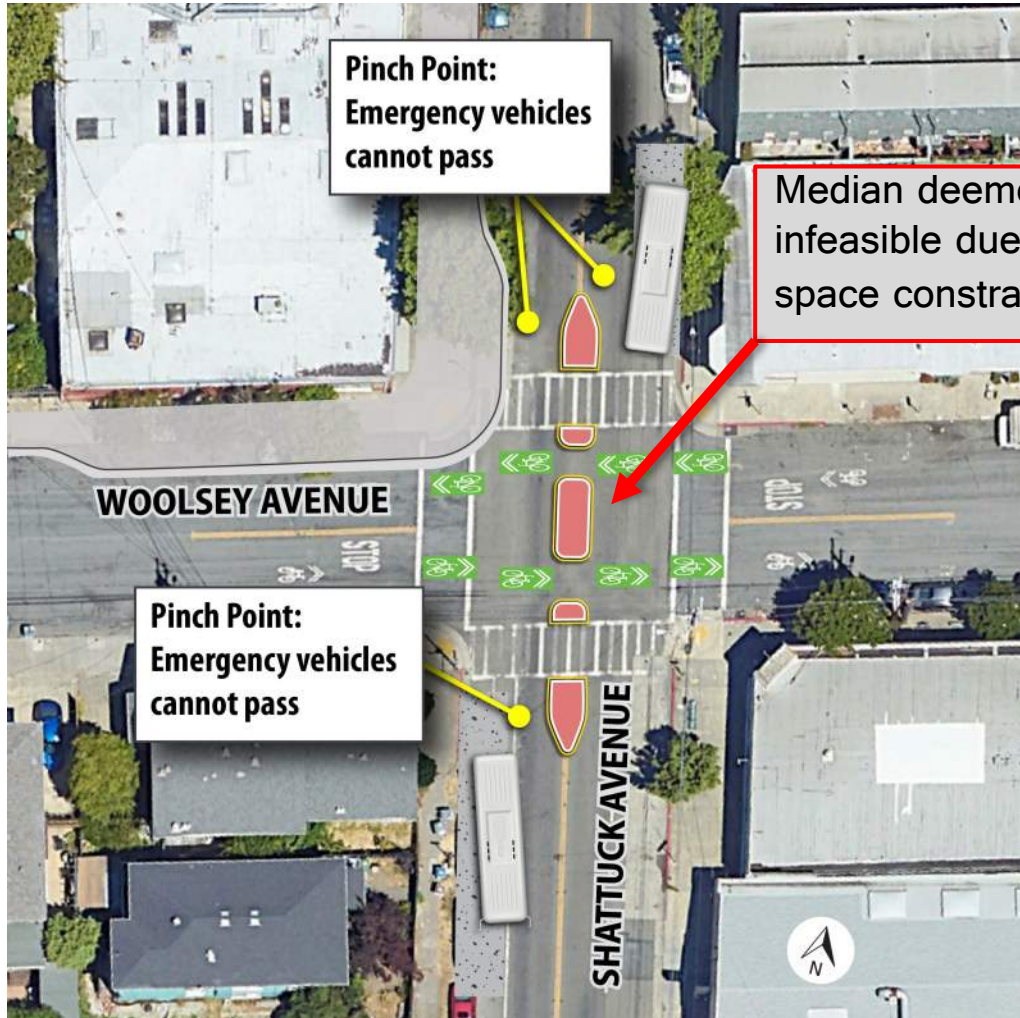
# WOOLSEY-FULTON BIKE BOULEVARD & SHATTUCK-MLK BUS STOPS SAFETY PROJECTS WOOSLEY STREET CORRIDOR – WOOLSEY/SHATTUCK



- RRFB buttons at curb ramps and reachable by bicyclists
- Bus Stops move to far sides of intersection on Shattuck Ave.
  - Bus stop amenities TBD depending on available space
- Coordinating with development project at northwest corner
- Differs from recommendation in Bicycle Plan



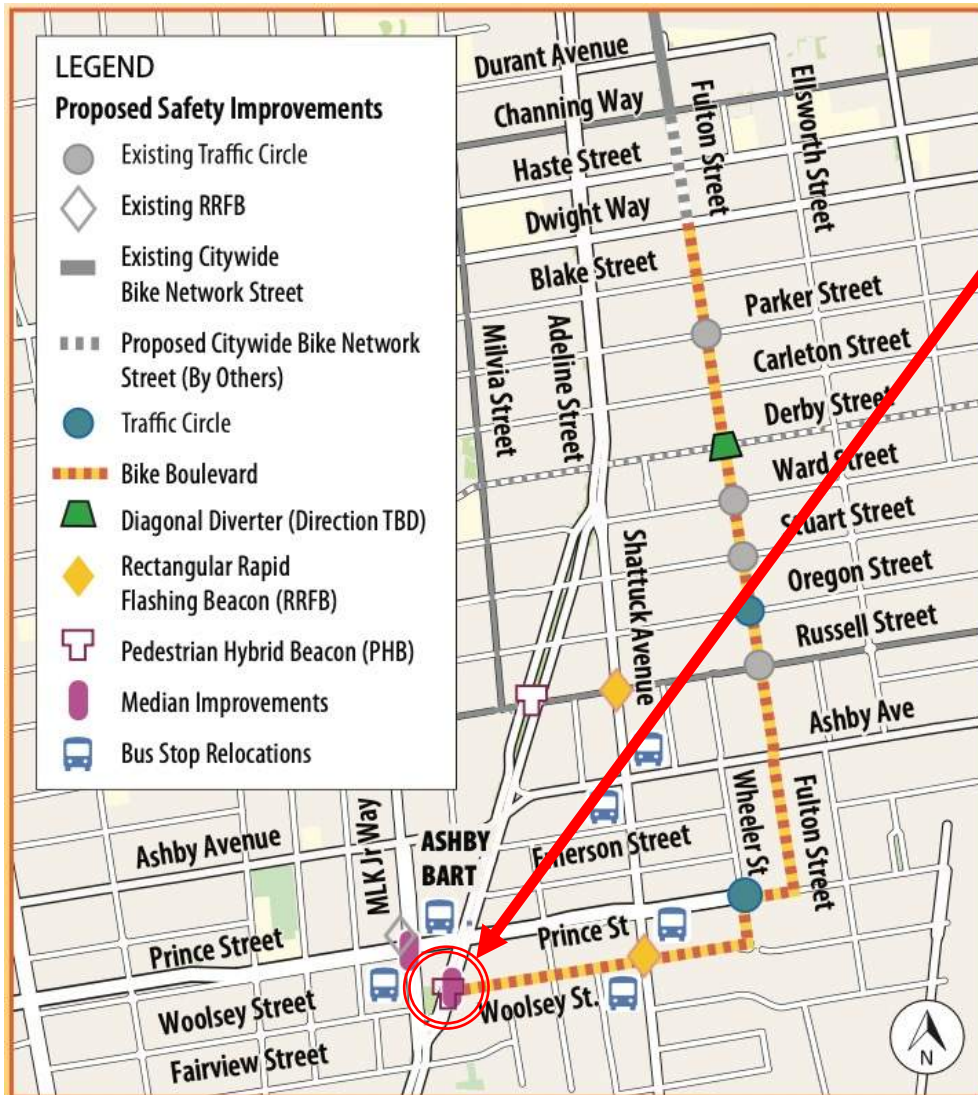
# WOOLSEY-FULTON BIKE BOULEVARD & SHATTUCK-MLK BUS STOPS SAFETY PROJECTS COMPLIANCE WITH BICYCLE PLAN



- It is infeasible to install a sufficiently wide median and in this case the Plan recommends consideration of curb extensions as a way to shorten crossing distance and improve visibility (see page 5-14 of City of Berkeley Bike Plan)

# WOOLSEY-FULTON BIKE BOULEVARD & SHATTUCK-MLK BUS STOPS SAFETY PROJECTS

## WOOLSEY STREET CORRIDOR – WOOLSEY/ADELINE



- PHB and median improvements at Woolsey/Adeline intersection
- Connection to Ashby BART station
- Coordinating with upcoming BART bicycle access improvements work at Ashby station



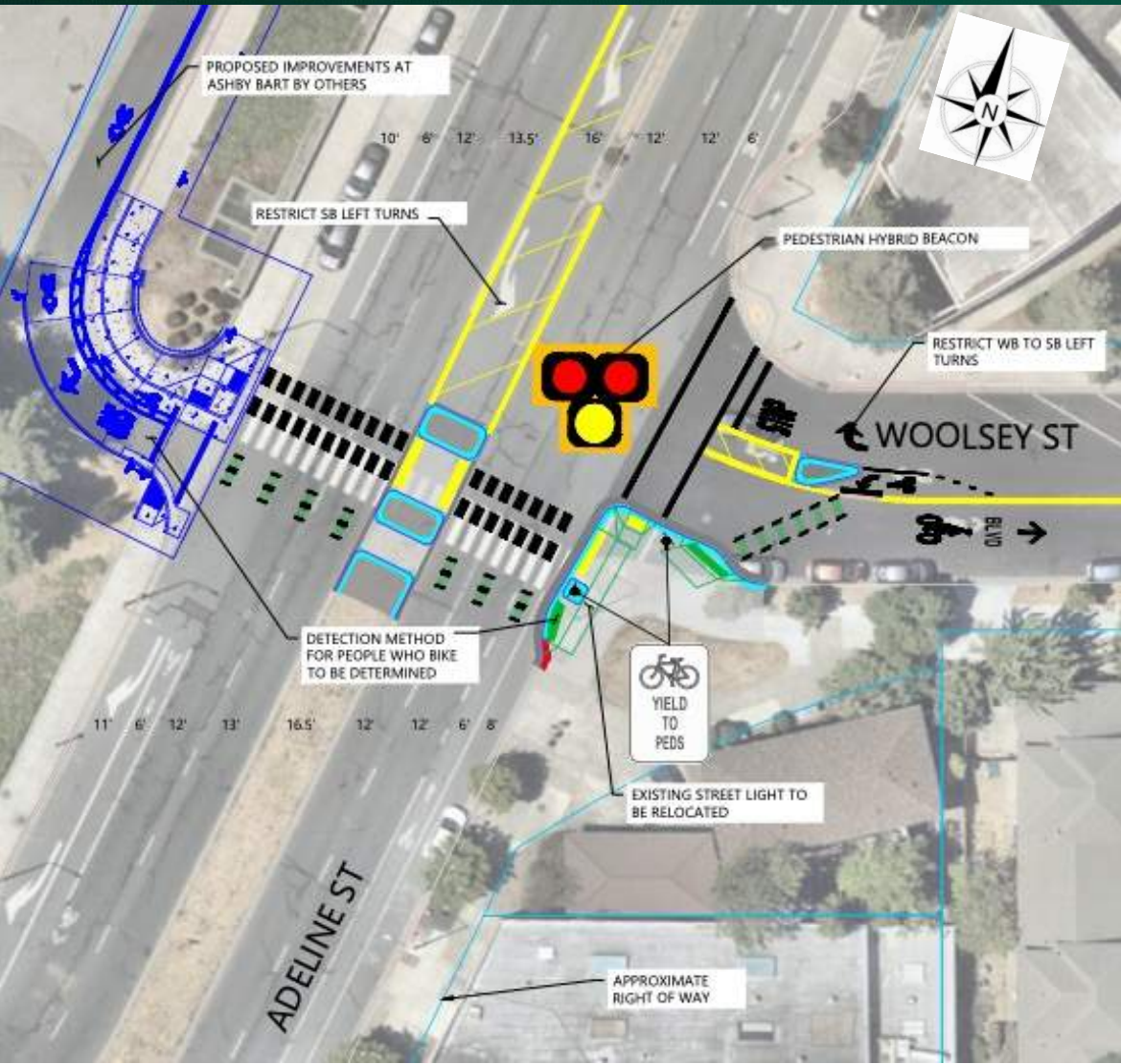


# WOOLSEY-FULTON BIKE BOULEVARD & SHATTUCK-MLK BUS STOPS SAFETY PROJECTS WOOSLEY STREET CORRIDOR – WOOLSEY/ADELINE





# WOOLSEY-FULTON BIKE BOULEVARD & SHATTUCK-MLK BUS STOPS SAFETY PROJECTS WOOSLEY STREET CORRIDOR – WOOLSEY/ADELINE

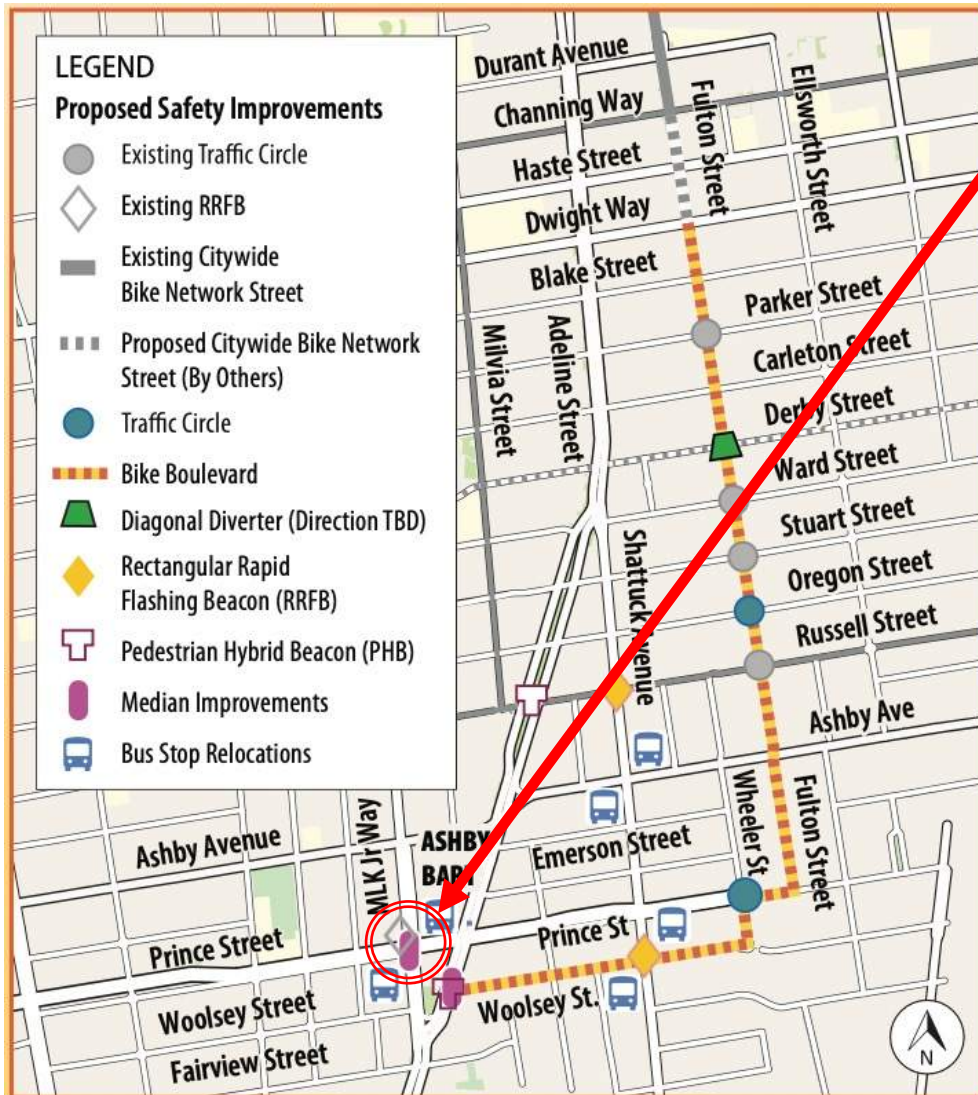


- PHB is per recommendation in Bicycle Plan
  - Evaluated for suitability at this intersection
- Left turn restrictions on southbound Adeline and westbound Woolsey
- Separated pedestrian and bike crossing across Adeline



# WOOLSEY-FULTON BIKE BOULEVARD & SHATTUCK-MLK BUS STOPS SAFETY PROJECTS

## MLK/PRINCE INTERSECTION



- Reuse existing RRFBs
- Median improvements and sidewalk bulbouts
- Connection to Ashby BART station
- Bus stop relocations to far sides of intersection





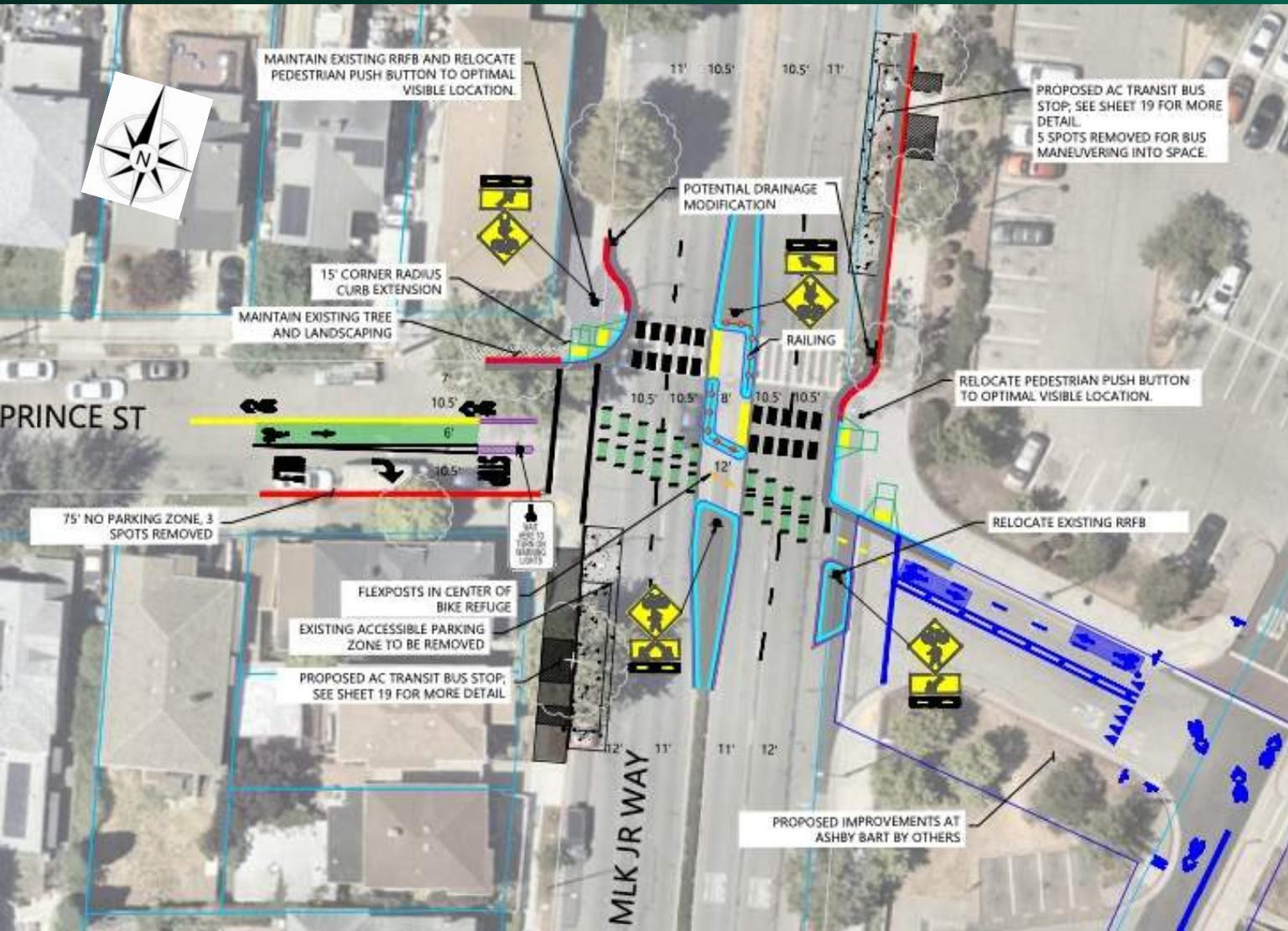
# WOOLSEY-FULTON BIKE BOULEVARD & SHATTUCK-MLK BUS STOPS SAFETY PROJECTS MLK/PRINCE INTERSECTION







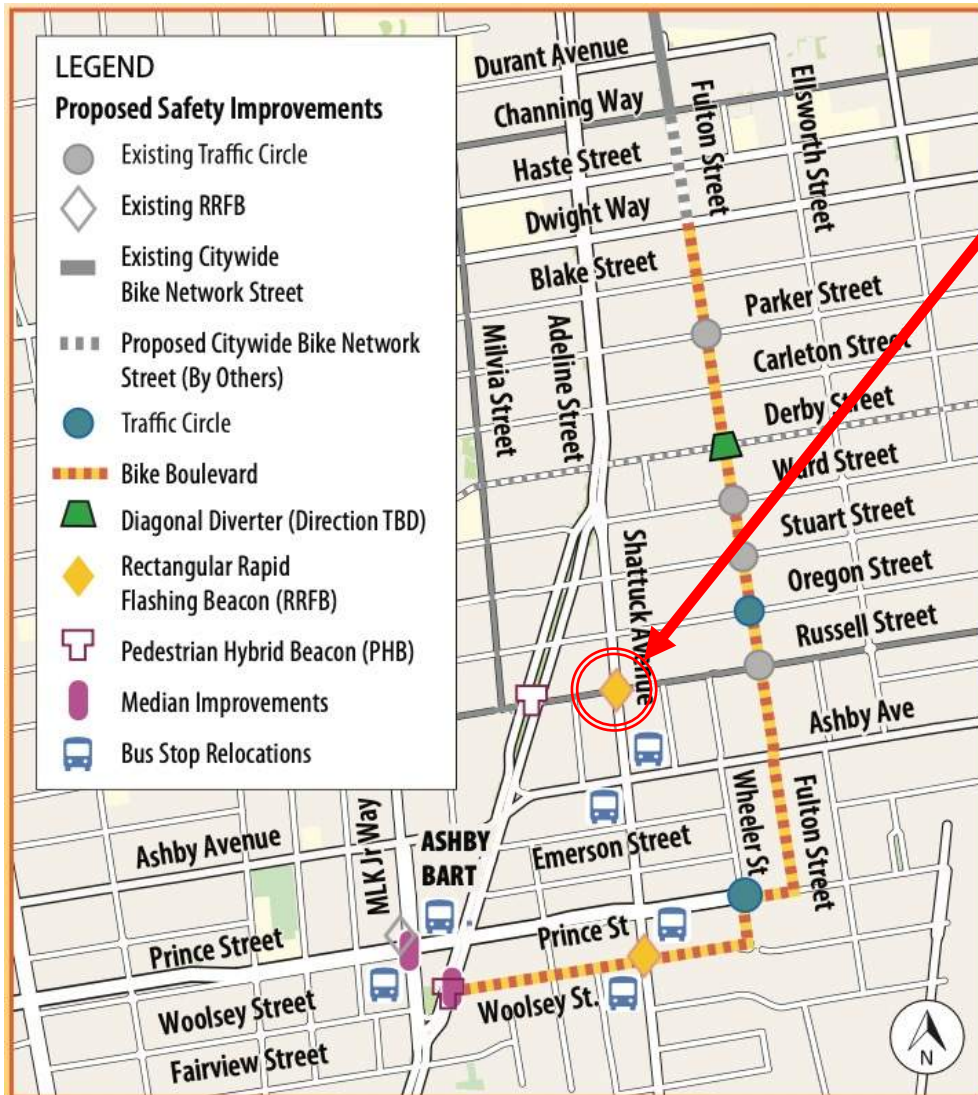
# WOOLSEY-FULTON BIKE BOULEVARD & SHATTUCK-MLK BUS STOPS SAFETY PROJECTS MLK/PRINCE INTERSECTION



- Widen median: pedestrian and bike refuges
- Offset crosswalk
- Sidewalk bulbouts shorten crossing distances
- Coordinating with upcoming BART access improvements at Ashby station
- Bus stop amenities TBD depending on available space



# WOOLSEY-FULTON BIKE BOULEVARD & SHATTUCK-MLK BUS STOPS SAFETY PROJECTS RUSSELL STREET CORRIDOR – RUSSELL/SHATTUCK



- RRFBs and sidewalk bulbouts at Russell/Shattuck intersection
- Russell St. is a Bicycle Boulevard





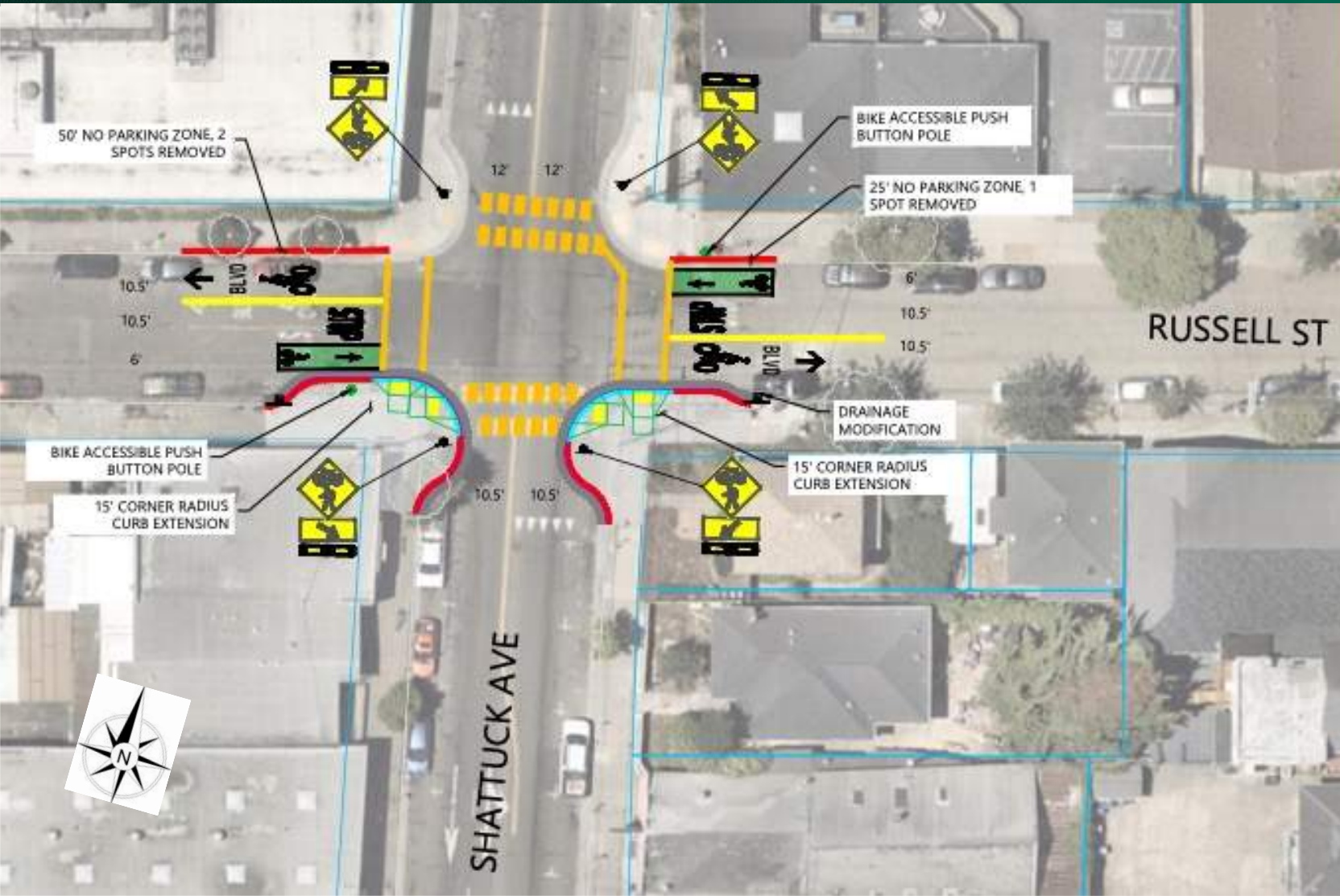
# WOOLSEY-FULTON BIKE BOULEVARD & SHATTUCK-MLK BUS STOPS SAFETY PROJECTS RUSSELL STREET CORRIDOR – RUSSELL/SHATTUCK







# WOOLSEY-FULTON BIKE BOULEVARD & SHATTUCK-MLK BUS STOPS SAFETY PROJECTS RUSSELL STREET CORRIDOR – RUSSELL/SHATTUCK

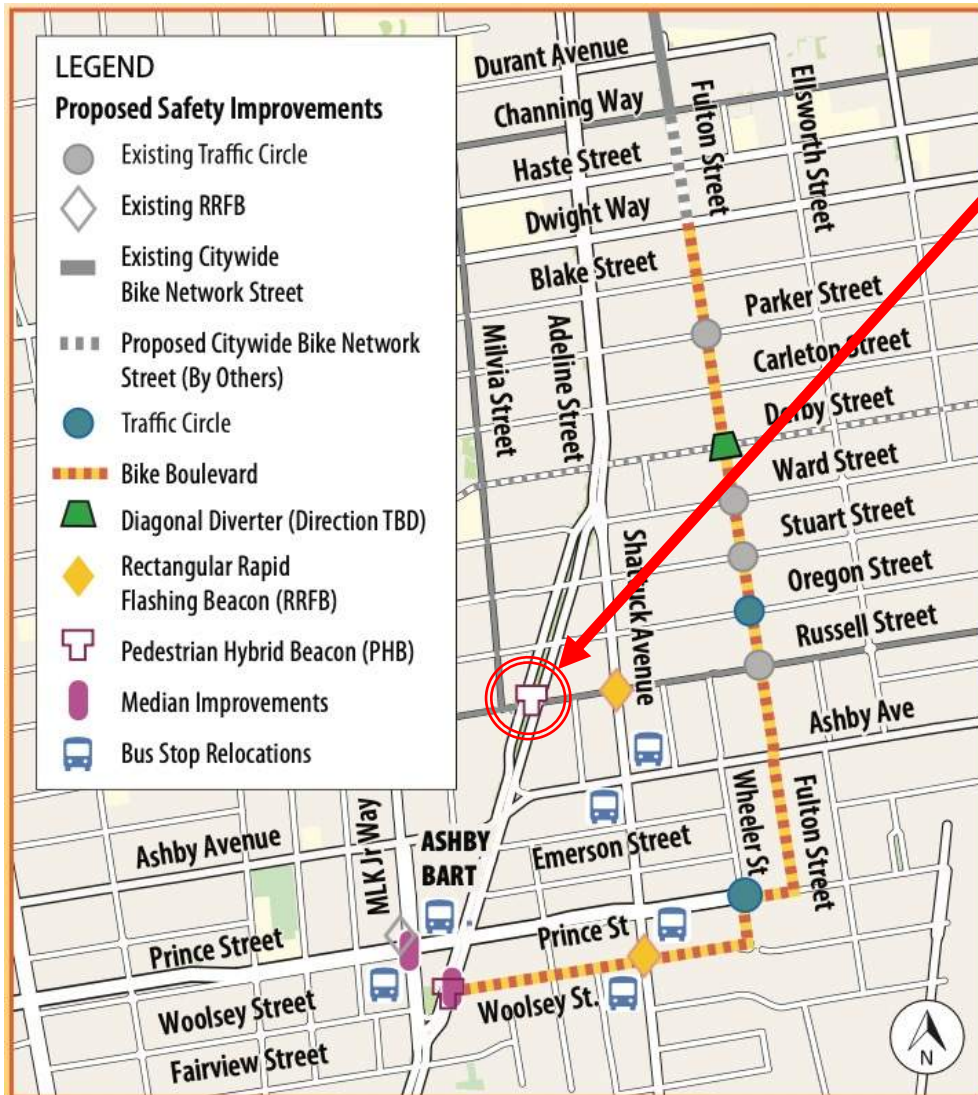


- Existing curb ramps at northwest and northeast corners
- New curb ramps at southwest and southeast corners
- RRFB buttons at curb ramps and reachable by bicyclists
- Differs from recommendation in Bicycle Plan



# WOOLSEY-FULTON BIKE BOULEVARD & SHATTUCK-MLK BUS STOPS SAFETY PROJECTS

## RUSSELL STREET CORRIDOR – RUSSELL/ADELINE



- PHB at Russell/Adeline intersection
- PHB is per recommendation in Bicycle Plan
  - Evaluated for suitability at this intersection
- Russell St. is a Bicycle Boulevard





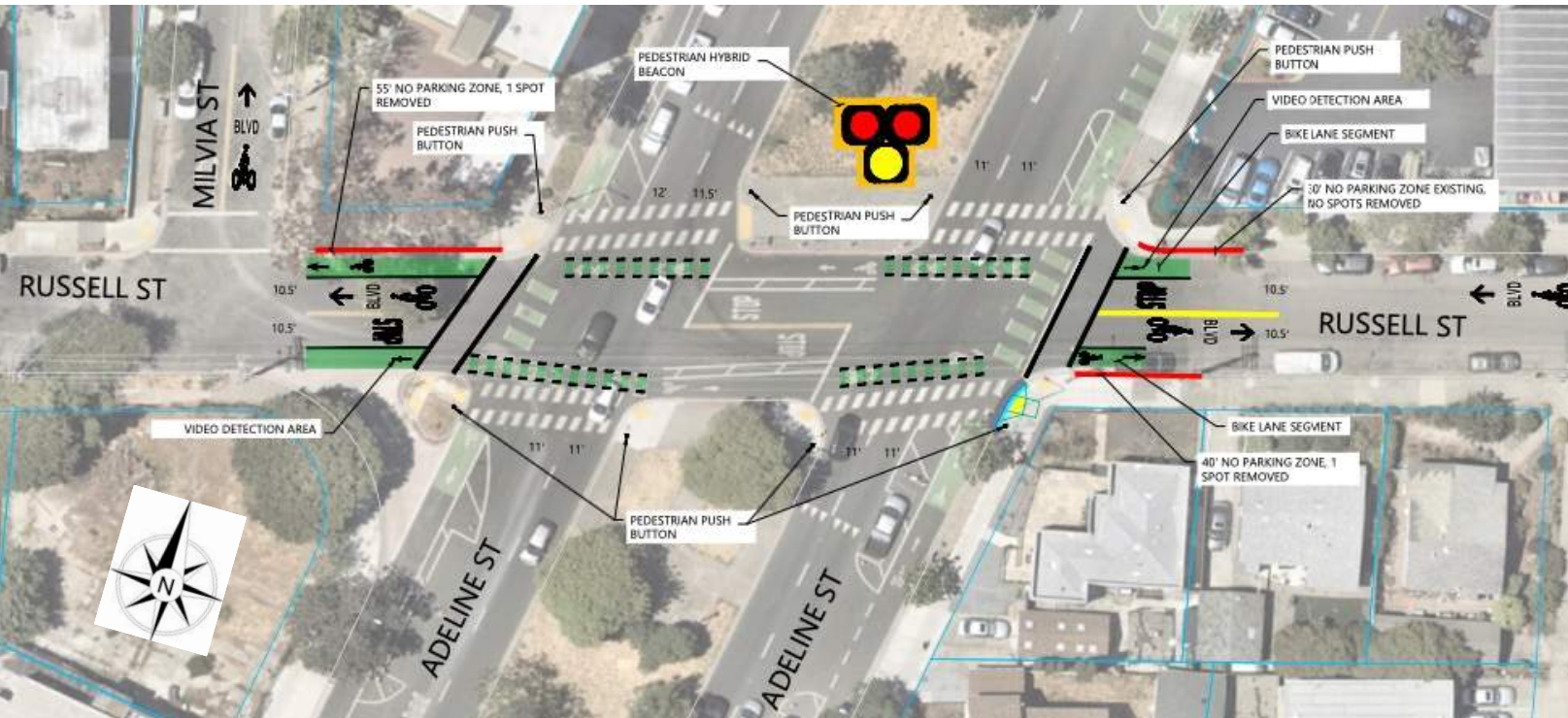
# WOOLSEY-FULTON BIKE BOULEVARD & SHATTUCK-MLK BUS STOPS SAFETY PROJECTS RUSSELL STREET CORRIDOR –RUSSELL/ADELINE







# WOOLSEY-FULTON BIKE BOULEVARD & SHATTUCK-MLK BUS STOPS SAFETY PROJECTS RUSSELL STREET CORRIDOR –RUSSELL/ADELINE

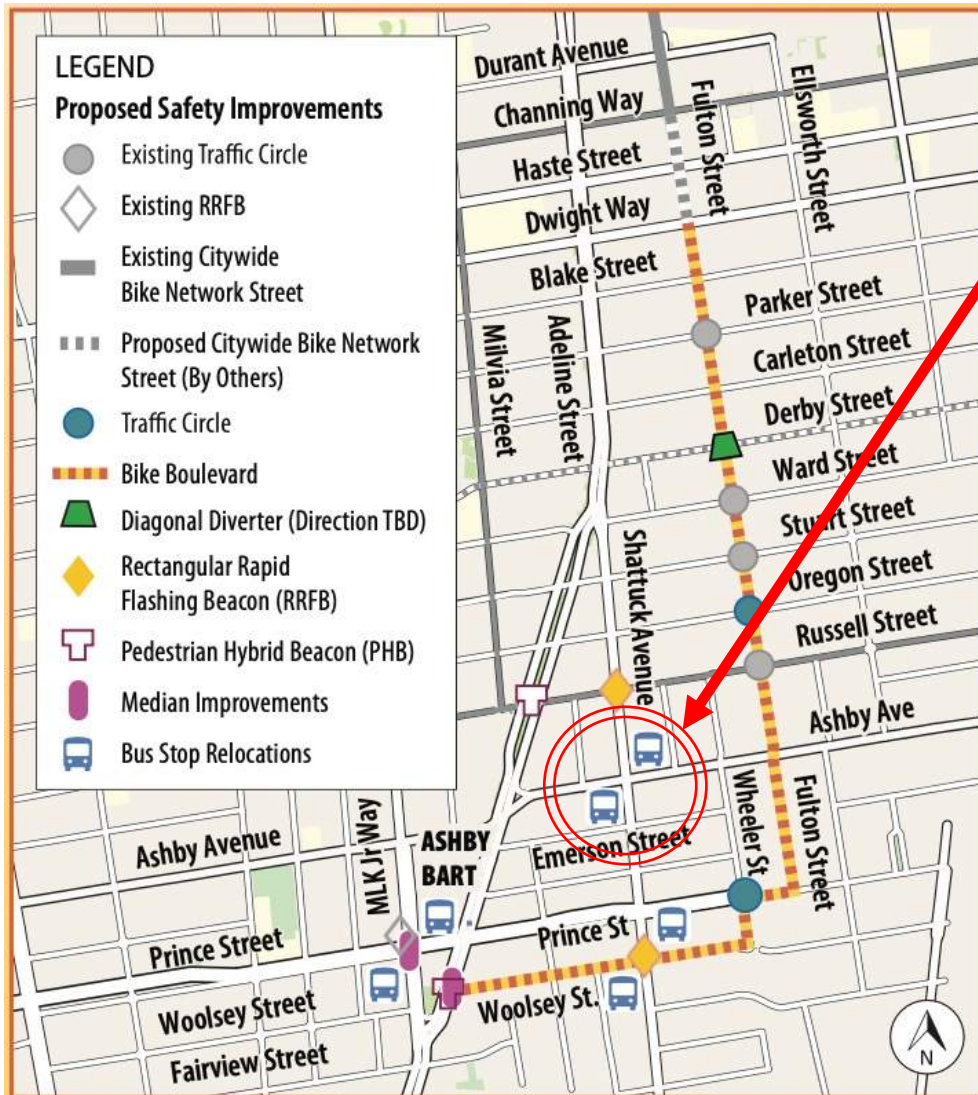


- Install Pedestrian Hybrid Beacon (PHB)
- Long crossing – evaluating one- vs. two-stage PHB activation
- Connects to Milvia St. Bicycle Boulevard and Adeline St. bike lanes



# WOOLSEY-FULTON BIKE BOULEVARD & SHATTUCK-MLK BUS STOPS SAFETY PROJECTS

## SHATTUCK/ASHBY BUS STOPS



■ Bus stop relocations to far sides of intersection





# WOOLSEY-FULTON BIKE BOULEVARD & SHATTUCK-MLK BUS STOPS SAFETY PROJECTS SHATTUCK/ASHBY BUS STOPS

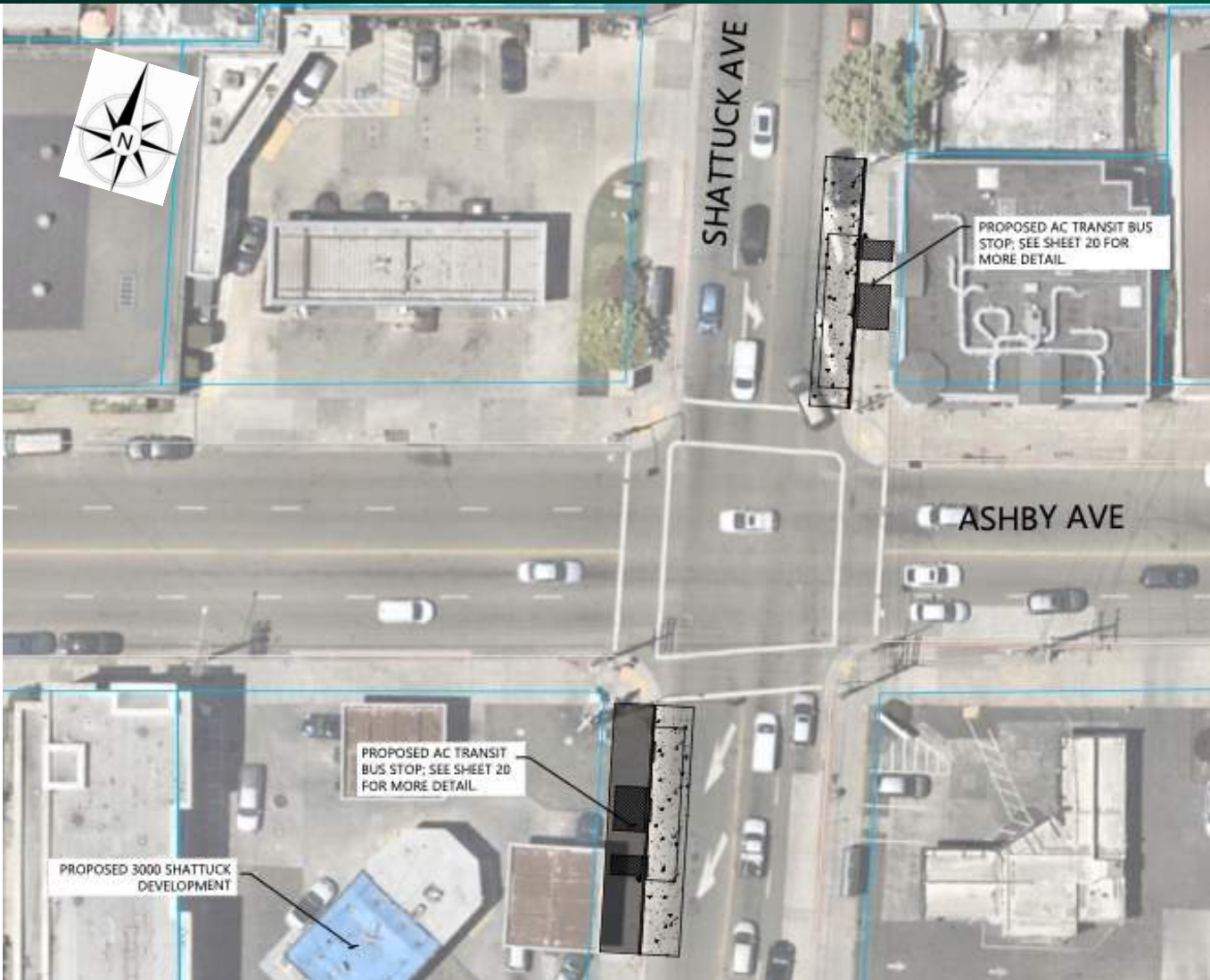






# WOOLSEY-FULTON BIKE BOULEVARD & SHATTUCK-MLK BUS STOPS SAFETY PROJECTS

## SHATTUCK/ASHBY BUS STOPS



- Coordinating with development project at southwest corner
- Bus stop amenities TBD depending on available space





## WOOLSEY-FULTON BIKE BOULEVARD & SHATTUCK-MLK BUS STOPS SAFETY PROJECTS QUESTIONS & ANSWERS / PUBLIC COMMENT

- To speak: raise hand (on a phone \*9 to raise/lower hand).  
When called, un-mute (\*6 on a phone to unmute/mute) your microphone.
- If you have a comment, please keep it on the topic of tonight's project presentation.
- **Time for public comment is limited to XX.**
- Additional public comments not received this evening should be sent to [dhoffman@parametrix.com](mailto:dhoffman@parametrix.com) by **February 14, 2024**.



# WOOLSEY-FULTON BIKE BOULEVARD & SHATTUCK-MLK BUS STOPS SAFETY PROJECTS PUBLIC COMMENTS & QUESTIONS

**Submit comments by February 14, 2024**

Visit the project website:



## Thank You !

David Hoffman, Planner  
[dhoffman@parametrix.com](mailto:dhoffman@parametrix.com)

<https://berkeleyca.gov/woolsey-fulton-bicycle-blvd>