

Resources and Tips

- Stay inside your building until shaking stops. Injuries can occur from falling objects.
- In a large apartment building the safest place in an earthquake is by the central reinforced core of the building, which is usually located by the elevator.
- Do not use elevators after an earthquake; the power may go out and leave you trapped. If you are in an elevator, press all buttons and exit as soon as you can.
- The fire alarm/sprinklers may go off in an earthquake. Don't be alarmed, but do leave your unit if it's safe to do so.
- Make sure your evacuation area is located a distance at least twice the height away from nearby buildings
- If safe, check on neighbors who may have difficulty evacuating via stairs.

For Alternative Formats

Email: [ADA@](mailto:ADA@cityofberkeley.info)

cityofberkeley.info

Call: 1-510-981-6418

In an Emergency,

Check these sources for emergency instructions and information.

Radio

- 1610 AM
- KPFB – 89.3 FM
- KQED – 88.5 FM
- KCBS – 740 AM
- KSOL – 98.9 FM (Spanish)

Television: All stations will broadcast messages sent by Alameda County through the Emergency Alert System (EAS).

Online at www.CityofBerkeley.info

Information will be available in accessible formats.

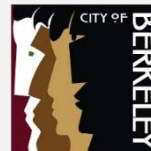
Friends and Neighbors: Share emergency information and instructions with the people around you.

These systems may not work in an emergency. Be ready to use many sources to find information.

Prepare Now

Sign up for AC Alert

Visit www.ACAAlert.org and sign up to receive emergency information and instructions via voice call, text, email,



Apartment Preparedness



City of Berkeley

Ready@CityofBerkeley.info

(510) 981-5605 (Phone)

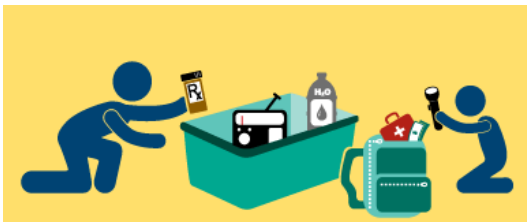
(510) 981-5544 (TTY/TDD)

www.CityofBerkeley.info/Ready

Edit Date: 05/24/18

Planning for a Disaster

- Landlords are required to provide smoke and carbon monoxide alarm in every rental unit. It is the tenant's responsibility to replace batteries. **Test smoke and carbon monoxide alarm and replace batteries every six months.**
- Consider buying renter's insurance to help replace your belongings if they are damaged in a disaster.
- Meet your neighbors! Exchange contact information and learn who might need assistance during evacuations and emergencies.
- Evacuate EVERY time fire alarms go off.
- If your building has fire sprinklers, do not hang anything on them.
- Check with your landlord about how you are allowed to secure furniture to walls to prevent them from falling in an earthquake.



Ask your Building Manager to Review:

- ✓ Emergency Exits
- ✓ Fire extinguishers locations
- ✓ Gas/water shut off valves procedures

Write it Down...

Write down important emergency contact information in your plan

Landlord Contact Information:

Landlord Name: _____

Phone :(_____) _____ - _____

Email: _____

Apartment Emergency Plans:

Meeting Area (after an evacuation):

Neighbor Contact Information:

Neighbor Name: _____

Phone :(_____) _____ - _____

Decide with your Household:

Best evacuation routes out of the building: _____

Household meetup locations:

1. one near the building
 2. and one far away
1. _____
2. _____

Storing Disaster Supplies in Limited Space?

Here are some ideas to maximize your space:

- Store supplies on your balcony, under your bed, in the back of your closet, and in the trunk of your car.
- Store water bottles in empty spaces in the freezer. Leave enough empty room at the top of bottle for ice expansion (this will make your freezer more energy efficient and provide emergency water).
- Don't store water/food in glass containers; they may break during an earthquake.
- Choose furniture or decorative items that have storage space in them.
- Keep a list of where supplies are stored and their expiration dates.
- As an alternative to shelves, you can purchase some inexpensive "over the door shoe organizers" for storing canned goods or bottled water.

Other Berkeley Ready Brochures with more Information:

- *Emergency Preparedness*
- *Earthquake Preparedness*
- *Pet Preparedness*
- *Preparing for a Disaster: People with Disabilities*