

## GET THE REUSE BALL ROLLING!

- **Repair**, rather than discard!
- **Trade** what you don't want for what you want!
- **Sell** what you no longer need or want!
- **Rent** what you need temporarily!
- **Buy** reusable durable goods!

“REUSE” means the repeated use of consumer goods -

- Without changing them
- Without using up additional resources
- Without creating additional waste

The purpose of this booklet is to help you find businesses that buy, sell, trade, rent, and repair reusable goods.

## HOW TO USE THIS BOOKLET

The booklet you are about to use (and Reuse!) is a shopper's treasure, with 300 shops and resources listed where you can buy, sell, trade, rent, repair, or donate the many things of enduring quality – at bargain prices!

**This booklet is also easy to use.**

A quick glance at the **Table of Contents** will identify the page where each **category** starts (Toys or Antiques, for instance). On that page you'll find a brief description of that category opposite an easy-to-read **Berkeley/Albany map**, updated to January, 2007.

**Shop listings** follow in alphabetical order, **numbered to identify them on the map**. An overall glance at each map will show general areas where the stores you want are located and allow you to plan your shopping expedition.

Each listing notes official **store hours**, and provides a brief **description of each store's treasures**, along with exact **addresses** and **phone numbers** (call first – hours do change). Read the descriptions carefully for information on **consignment possibilities, rentals, and repairs**.

### **Plan to take along reusables to sell or donate!**

The booklet fits handily in your auto glove compartment, bicycle bag, basket, or purse. If you happen to forget your booklet, each store listed will have a **Store Copy** available for your convenience.

Reusable goods are found not only at the retail businesses listed in this booklet, but at flea markets, pawn shops, auctions, garage sales, rummage sales, in classified ads, and on bulletin boards. Public libraries and museums are also major reuse facilities.

**PROMOTE REUSE EVERYWHERE!**

# Table of Contents

Recycled Products .....	4
Antiques .....	8
Auto .....	11
Books .....	12
Clothing.....	17
Collectibles .....	24
Entertainment Equipment .....	27
Furnishings.....	30
Home & Yard.....	34
Medical .....	42
Musical Instruments .....	45
Office Equipment .....	48
Outdoor Equipment.....	52
Packaging .....	56
Recordings .....	58
Salvage .....	60
Thrift Shops .....	63
Toys .....	66
Resources – General .....	68
Albany Environmental Resources .....	70
Berkeley Environmental Resources .....	71
Bay Area Resources .....	73
Regional and State Resources .....	74
Junk Mail Reduction .....	75
Feeling Left Out? .....	77

## RECYCLED PRODUCTS

Closing the loop – when a reusable just won't do, consider items made with recycled materials. Buying recycled content goods closes the loop – from manufacturing to distribution to use to recycling and back to manufacturing. Common examples include copy paper, grocery bags, newspaper, paper towels, recycling bins, trash containers, and remanufactured toner cartridges. But, are you familiar with salvaged wood furniture, broken glass counter tops, decking, stop light tableware, inner-tube handbags, chopstick lamps, and green building products? The businesses below are just a few examples of what is available in the Bay Area. For additional information on buying recycled, visit the web sites at the end of this section.

### BERKELEY ECOLOGY CENTER

1

Environmental Resource  
Center and Store  
2530 San Pablo Ave @ Blake  
Berkeley CA 94702  
548-2220 x233  
[www.ecologycenter.org](http://www.ecologycenter.org)

Tue-Sat 11am-6pm

*Sell Accepts Donations*

Recycled content paper and glass, reused goods, organic gardening supplies, non-toxic and resource-efficient household products, and more.

### RECYCLED GLASSWORKS

238 Bonview St @ Cortland  
San Francisco CA 94110  
415-641-5610  
[www.RecycledGlassworks.com](http://www.RecycledGlassworks.com)

Call for appt

*Buy Sell Accepts Donations*

Turns 1/4" broken plate glass windows, sliding glass doors and stop light glass into attractive dishes, plates and bowls. Accepts 1/4" plate glass; must be at least 12" sq; no shards.

### ECOHOME IMPROVEMENT

2

2619 San Pablo Ave  
Berkeley CA 94702  
510-644-3500  
[www.ecohomeimprovement.com](http://www.ecohomeimprovement.com)

Tue-Fri 10am-6pm; Sat 9am-4pm;

Sun 11am-4pm

*Sell*

Ecohome Improvement offers ecological and healthy home paint, flooring, cabinetry and countertops.

---

## RECYCLED PRODUCTS



### STUDIO EG

1442 Rich St  
Oakland CA 94609  
596-8995  
[www.studioeg.com](http://www.studioeg.com)

Visit website for hours

*Sell*

A research, design, and development firm committed to the creative utilization of recycled, reused, and non-toxic materials. Designs and manufactures stylish office environments and furniture utilizing low-energy manufacturing processes, recycled and reused materials – green particleboard, cardboard, compressed newsprint, and shredded tires.

### TURN OF THE CENTURY 3

Fine Arts Gallery  
2510 San Pablo Ave  
Berkeley CA 94702  
849-0950

[www.turnofthecenturyfinearts.com](http://www.turnofthecenturyfinearts.com)

Call first: Fri-Sun 12-6pm

*Sell Accepts Donations*

A wide variety of chairs, tables, cabinets, and unique art pieces made from found items and salvaged and scrap wood. Frequent art receptions showcasing local artists.

## USED RUBBER USA

856 Page St  
San Francisco CA 94117  
415-626-7855  
[www.usedrubberusa.com](http://www.usedrubberusa.com)

Call for appt and/or visit website  
*Sell*

Quality personal accessories made of inner tube rubber – wallets, briefcases, planners, handbags, totes, and backpacks.

---

## VETRAZZO

(Previously Counter Production)  
1414 Harbour Way So  
Ste 1400 @ Ford Point  
Richmond CA 94804  
234-5550  
[www.vetrazzo.com](http://www.vetrazzo.com)

Visit web site for local retailers  
*Sell*

Vetrazzo, 85% recycled glass solid surface material, available in many designs. Fabricated like granite or marble.

---

## RECYCLED PRODUCTS – PAINT

### ALAMEDA COUNTY

Household Hazardous Waste  
Hotline  
1-800-606-6606  
[www.household-hazwaste.org](http://www.household-hazwaste.org)

Call for schedule  
*Accepts Donations*

Free to Alameda County residents. Businesses can participate for a small fee, with prior arrangement. Swap Shed for common hardware store products. Schedules vary/call for details.

### WOODEN DUCK, THE

4

2919 7<sup>th</sup> St @ north of Ashby  
Berkeley CA 94710  
848-3575  
[www.thewoodenduck.com](http://www.thewoodenduck.com)

Mon-Sat 10am-6pm; Sun 12-5pm  
*Sell*

Solid wood furniture made from recycled and restored wood – from local projects as well as imported from Asia.

---

### KELLY-MOORE PAINT COMPANY

5

969 San Pablo Ave  
Albany CA 94706  
525-3162  
[www.kellymoore.com](http://www.kellymoore.com)  
(select Ecoat)

Mon-Fri 6:30am-6pm; Sat 8am-5pm;  
Sun 8:30am-6pm  
*Sell*

Sells E-coat Recycled Paint products made from paint the Kelly-Moore plant in Sacramento manufactures from household hazardous waste collection programs.

---

---

## RECYCLED PRODUCTS – RESOURCES

### ARCHITECTS/DESIGNERS/ PLANNERS FOR SOCIAL RESPONSIBILITY

[www.adpsr-norcal.org](http://www.adpsr-norcal.org)

---

### CITY OF BERKELEY OFFICE OF SUSTAINABLE DEVELOPMENT

[www.ci.berkeley.ca.us/  
sustainable/business/  
greenleaders.html](http://www.ci.berkeley.ca.us/sustainable/business/greenleaders.html)

Lists Berkeley Green businesses that use and sell environmentally sound products.

---

### CONSERVATREE

[www.conservatree.com](http://www.conservatree.com)

How to choose paper that is environmentally friendly and meets your needs. Includes recycled content, sustainably harvested, tree-free, sustainably produced papers, local sources; background and research information.

---

### STATE OF CALIFORNIA INTEGRATED WASTE MANAGEMENT BOARD

[www.ciwmb.ca.gov/  
BuyRecycled/](http://www.ciwmb.ca.gov/BuyRecycled/)

*Recycled Content Product Directory* lists thousands of products containing recycled materials as well as information about the manufacturers, distributors and reprocessors of these products. Buying cooperative for government agencies and private businesses. State policies and recycled content requirements.

---

### BUYRECYCLED STOPWASTE.ORG ALAMEDA COUNTY

Recycling Hotline  
877-STOPWASTE  
(786-7927)

[www.stopwaste.org/  
buyrecycled.html](http://www.stopwaste.org/buyrecycled.html)

Mon-Fri 9am-4pm

Funded by a surcharge on every ton of waste, StopWaste.Org's mission is to provide the most environmentally sound waste management programs for the people of Alameda County.

---

### US ENVIRONMENTAL PROTECTION AGENCY

415-947-8000

[www.epa.gov/cpg/](http://www.epa.gov/cpg/)

EPA's comprehensive procurement guidelines for recycled content, and list of products and policies.

---

# Antiques

True antiques are 100 years old. Antiques are the Queen Mothers of reusables, prized for their age, condition, and beauty. The following listings include unique furniture, ornate jewelry, porcelain, crystal and silverware, as well as outsider art and eclectic funky. Establishments that handle local goods and consignments are listed, shops that carry a majority of imported items are not. Be sure to call ahead because antique dealers often are “out and about” finding more treasures.

**ALABAMA CHICKEN** ①  
1102 Gilman St @ San Pablo  
Berkeley CA 94706  
525-0884

Sat-Sun 12-6pm  
*Buy Sell Trade Consign*  
Americana, folk, visionary, outsider art, eclectic funky household items, furniture, and local music.

**ANTIQUES ON SOLANO** ②  
1126 Solano Ave @ Kains  
Albany CA 94702  
528-2785

Tue-Sat 11am-5:30pm  
*Buy Sell Trade Consign Rent*  
Vintage jewelry, furniture, china, and other treasures. Single items as well as entire estates.

**BRENT'S UNIQUE SHOP** ③  
1824 San Pablo Ave @ Hearst  
Berkeley CA 94702  
841-9051

Mon, Fri 12-6pm; Tue,  
Thu-Sat 11am-6pm  
*Buy Sell Trade*  
Furniture, bric-a-brac, records, housewares, and American antiques and collectibles.

**CARTER WEST** ④  
**ANTIQUES AND ESTATE**  
**LIQUIDATIONS**  
AAA Estates Liquidation  
Services  
2371 San Pablo Ave  
@ Channing  
Berkeley CA 94702  
848-8317

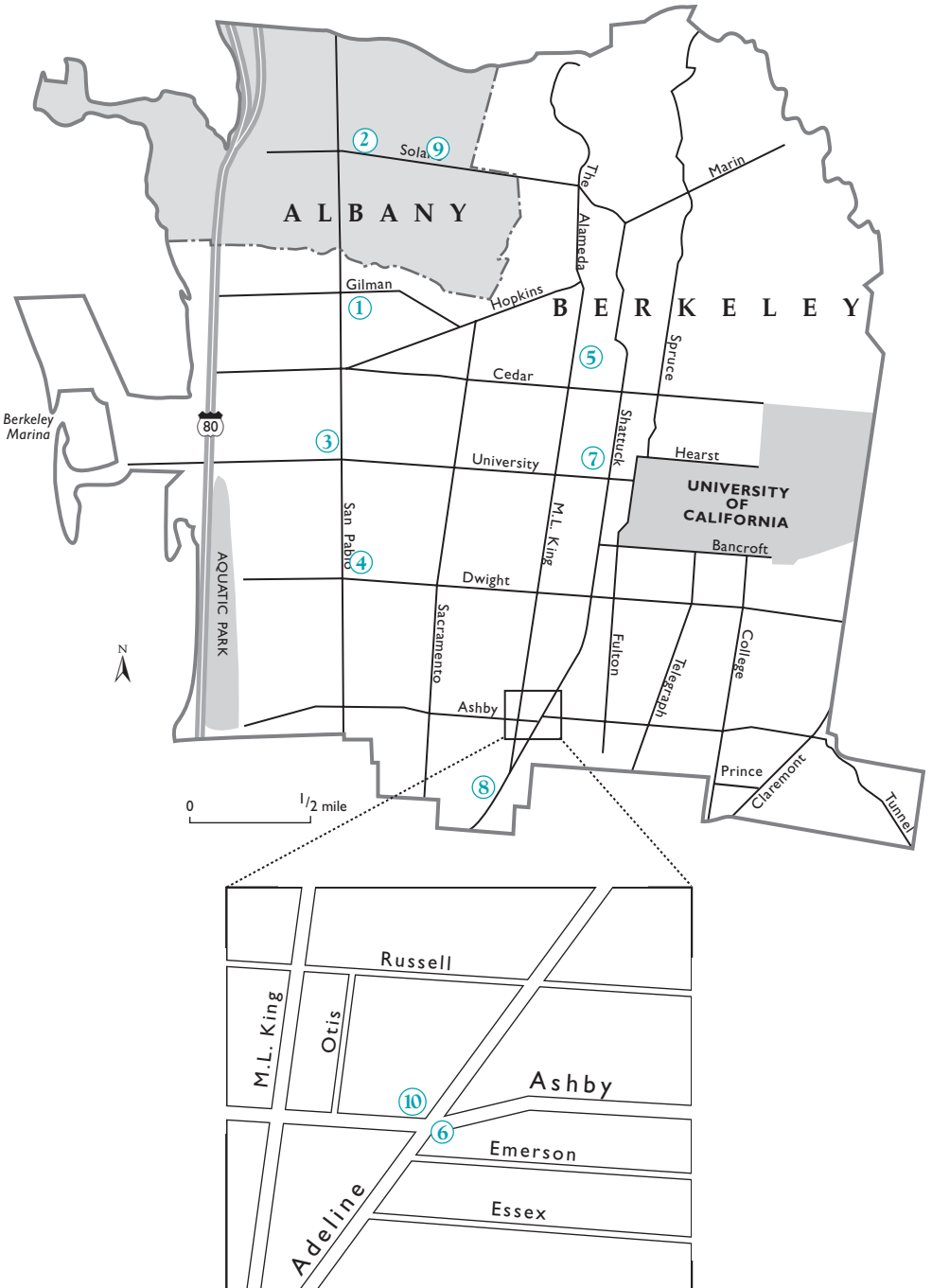
Wed-Sun 12-5:30pm  
*Buy Sell Trade Consign Rent*  
Wide variety of items including furniture, lighting, books, and collectibles. Also conducts estate sales.

**GROVE ANTIQUES** ⑤  
1417 MLKing #A  
Berkeley CA 94709  
525-9120

Sat 1:30-5:30pm  
*Sell*  
General line of antiques, “smalls,” linens, kitchenware, glass, china, jewelry, and collectibles.



# ANTIQUES



## JACK'S ANTIQUES

6

3021 Adeline St @ Ashby  
Berkeley CA 94703  
845-6221

Mon-Fri 9am-5pm; Sat 9am-4pm  
*Buy Sell Repair/Restore*

Antique furniture and accessories, paintings, brass, copper, porcelain, silver, and textiles. Will purchase individual items as well as estates.

---

## MIXED PICKLES ANTIQUES

7

1746 Shattuck Ave  
Berkeley CA 94709  
649-1353

[www.mixedpickleshome.com](http://www.mixedpickleshome.com)

Tue-Sat 12-5:30pm  
*Sell*

American and European antiques, architectural pieces, furniture, glassware, and vintage textiles and clothing.

---

## PEOPLE'S BAZAAR

8

3258 Adeline St @ Alcatraz  
Berkeley CA 94703  
655-8008

Mon-Sat 9am-5pm; Sun 12-5pm  
*Buy Sell Trade Consign*

Victorian specialty; quality used furniture and collectibles; ethnic art.

## SISTERS

9

1250 Solano Ave @ Masonic  
Albany CA 94706  
528-8020

Sat 12-5pm and by appt  
*Sell*

Linens, glassware, small furniture, home accessories, and collectibles. Estate liquidation services.

---

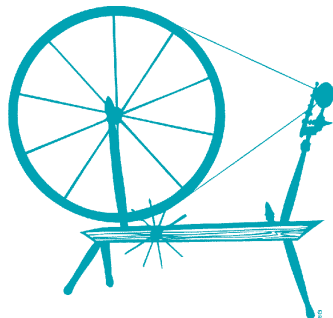
## VON HEMERT ANTIQUES

10

1989 Ashby Ave @ Adeline  
Berkeley CA 94703  
548-1327

Mon-Sat 1-4pm and by appt  
*Buy Sell Trade Rent*

Silver specialty, and general line of American and foreign antiques.



## Auto

Reuse is popular in the auto world and also good for the earth. For used motor oil disposal, see *Resources*. Check out the listings below and also look in the Yellow Pages under Automobile Dealers–Used; Automobile–Rentals; Automobile Parts–Recyclers; Dismantlers; and Batteries.

### ALTERNATORS UNLIMITED

①

1464 San Pablo Ave @ Jones  
Berkeley CA 94702  
527-7773

Mon-Fri 9am-6pm; Sat 9am-2pm

*Sell Repair/Restore*

Custom rebuilding of alternators,  
starters, and generators.

### DON'S TIRE SERVICE

②

820 Gilman St @ 6<sup>th</sup>  
Berkeley CA 94710  
526-0335

[www.donstireservice.com](http://www.donstireservice.com)

Mon-Fri 8am-5pm; Sat 8am-3pm

*Sell Repair/Restore*

Sells used tires and certified recycler of  
tires that are beyond repair.

### FIRESTONE STORE

③

1974 University Ave  
@ Milvia  
Berkeley CA 94702  
843-5454

[www.firestonecompleteautocare.com](http://www.firestonecompleteautocare.com)

Call first: Mon-Fri 7am-7pm;

Sat 7am-6pm; Sun 9am-5pm

*Sell Repair/Restore Accepts Donations*

Accepts used motor oil, coolant, and  
tires for disposal. Small fee.

### AUTO – RESOURCES

#### CITY CAR SHARE

[www.citycarshare.com](http://www.citycarshare.com)

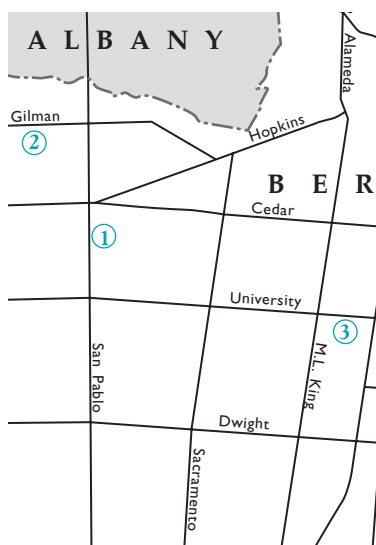
### AUTO – TIRE REUSE

#### TIRE RETREAD INFORMATION BUREAU

Toll free: 888-473-8732

[www.retread.org](http://www.retread.org)

A non-profit, member supported  
industry association committed to  
providing the public with the most up-  
to-date information on the economic  
and environmental benefits of tire  
retreading and tire repairing.



# Books

Books are literally reusable. Most used book stores carry just a copy or two of all kinds of titles, so it's a good idea to buy when you find the one you want. Also look for used books at thrift shops, toy shops, and even propped on the shelves in antique stores. Used textbooks are a must for students, and best of all, many used book stores will pay cash or give you trade value for these smart reusables.

## ALBANY LIBRARY

1

Friends of the Albany Library  
1247 Marin Ave @ Masonic &  
Evelyn  
Albany CA 94706  
526-3720  
[www.aclibrary.org](http://www.aclibrary.org)

Donations accepted during library  
hours: Mon 12-6pm; Tue-Wed 12-  
8pm; Thu 10am-6pm; Fri closed; Sat  
10am-5pm

*Sell Accepts Donations*

Books and magazines in saleable  
condition. On-going sale shelf and large  
book sales several times per year.

## ANALOG BOOKS

2

(Formerly Signal Books)  
1816 Euclid Ave @ Hearst  
Berkeley CA 94709  
843-1816

Mon-Sat 9am-7pm; Sun 10am-6pm  
*Buy Sell Trade Consign*  
New, used, and rare books.

## BLACK OAK BOOKS

3

1491 Shattuck Ave @ Vine  
Berkeley CA 94709  
486-0698  
[www.blackoakbooks.com](http://www.blackoakbooks.com)

Daily 10am-10pm

*Buy Sell Trade Accepts Donations*

Rare and scholarly books in many fields  
including psychology, classical studies  
and mathematics, plus fiction and art  
books.

## BOOKS OUT LOUD

4

1380 University Ave @ Acton  
Berkeley CA 94702  
649-1359

[www.booksoutloud.com](http://www.booksoutloud.com)

Mon-Fri 10am-7pm; Sat 10am-6pm

*Buy Sell Rent Accepts Donations*

Library of used audio books for rent and  
for sale.

## CAL STUDENT STORE

5

Textbook Department  
Telegraph & Bancroft  
642-9000, ext 688  
[www.ucberkeley.bkstr.com](http://www.ucberkeley.bkstr.com)

Mon-Fri 9am-6pm; Sat 10am-6pm;  
Sun 12-5pm

*Buy Sell*

Used college textbooks.

# BOOKS



**CARTESIAN BOOKSTORE** (6)  
2445 Dwight Way  
@ Telegraph  
Berkeley CA 94704  
549-3973

Mon-Sat 11am-7:30pm; Sun 12-5pm  
*Buy Sell Trade Accepts Donations*  
General use books especially history, natural history, philosophy and religion, and other humanities. Will accept related donations in good condition.

---

**HALF PRICE BOOKS** (7)  
2036 Shattuck Ave  
@ Addison  
Berkeley CA 94704  
526-6080  
[www.halfpricebooks.com/](http://www.halfpricebooks.com/)

Daily 9am-10pm  
*Buy Sell*  
Used and rare books. Books, magazines, comics, audio tapes, records, CDs, software, and videos.

---

**LIBRARY BOOKSTORE, THE** (8)  
Friends of the Berkeley Public Library  
2433 Channing Way  
@ Telegraph  
(*Sather Gate Mall between Durant & Channing*)  
Berkeley CA 94704  
841-5604  
[www.berkeleypubliclibrary.org/support/friends.html](http://www.berkeleypubliclibrary.org/support/friends.html)

Tue-Sat 10am-4pm  
*Sell Accepts Donations*  
Wide selection of donated books, CDs, VCRs and audiotapes at low prices. Also maintains on-going mini-book sales at libraries.

---

**NED'S BERKELEY BOOKSTORE** (9)  
2480 Bancroft Way  
@ Telegraph  
Berkeley CA 94704  
204-0900  
[www.nedsbooks.com/ucb](http://www.nedsbooks.com/ucb)

Mon-Fri 9am-6pm; Sat-Sun 11am-5pm  
*Buy Sell*  
Used textbooks.

---

**OTHER CHANGE OF HOBBIT** (10)  
2020 Shattuck Ave  
@ University  
Berkeley CA 94704  
848-0413  
[www.otherchangeofhobbit.com](http://www.otherchangeofhobbit.com)

Mon-Sat 12-7pm; Sun 12-6pm  
*Buy Sell Trade*  
Large variety science fiction and fantasy from used and rare collectibles to the newest books.

---

**PEGASUS BOOKS DOWNTOWN** (11)  
2349 Shattuck Ave @ Durant  
Berkeley CA 94704  
649-1320  
[www.pegasusbookstore.com](http://www.pegasusbookstore.com)

Mon-Thu 9am-10pm; Fri-Sat 9am-10:45pm; Sun 10am-10pm  
*Buy Sell Trade*  
General fine books bought daily – 20%-30% cash or 50% more in trade. Holds periodic warehouse sale – see web site for details.

---

**PEGASUS FINE BOOKS** (12)

1855 Solano Ave @ The  
Alameda  
Berkeley CA 94707  
525-6888

[www.pegasusbookstore.com](http://www.pegasusbookstore.com)

Mon-Thu 9am-10pm; Fri-Sat 9am-  
10:45pm; Sun 10am-10pm

*Buy Sell Trade*

Fine books bought for store credit or  
trade.

---

**PETTINGELL BOOK  
BINDERY** (13)

2181 Bancroft Way @  
Shattuck  
Berkeley CA 94702  
845-3653

[www.pettingellbookbindery.com](http://www.pettingellbookbindery.com)

Mon-Fri 1-6pm

*Sell Repair/Restore*

Pettingell provides bookbinding, book  
repair, portfolio and presentation services.

---

**SERENDIPITY BOOKS** (14)

1201 University Ave @  
Curtis  
(1 block east of San Pablo)  
Berkeley CA 94702  
841-7455

[www.serendipitybooks.com](http://www.serendipitybooks.com)

Call first: Mon-Sat 9am-5pm

*Buy Sell*

400,000 books in all fields; antiquarian.

---

**SHAKESPEARE & CO.** (15)

2499 Telegraph Ave @  
Dwight  
Berkeley CA 94704  
841-8916

Mon-Thu 10am-8pm; Fri-Sat 10am-  
9pm; Sun 11am-8pm

*Buy Sell Trade*

Scholarly and quality books. Used general  
stock; art, literature, and metaphysics  
specialty.

---

**SUNRISE BOOKSHOP &  
METAPHYSICAL** (16)

3054 Telegraph Ave @ Prince  
(1 1/2 blocks south of Ashby)  
Berkeley CA 94705  
841-6372

Mon-Sat 10am-6pm; Sun 12-5pm

*Buy Sell Trade*

Buy and sell second-hand books in  
eastern and western religions, philos-  
ophy, metaphysics, occultism, and  
related subjects.

---

**TURTLE ISLAND  
BOOKSELLERS – ABAA** (17)

3032 Claremont Ave @ Prince  
Berkeley CA 94705  
655-3413

Tue-Sat 10:30am-6pm and by appt

*Buy Sell Consign*

Rare and out of print scholarly books,  
fine and decorative arts, and literature.  
Appraisals for estate or insurance  
purposes.

---

**UNIVERSITY PRESS BOOKS** (18)

2430 Bancroft Way  
@ Telegraph  
Berkeley CA 94704  
548-0585

[www.universitypressbooks.com](http://www.universitypressbooks.com)

Mon-Fri 10am-8pm; Sat 10am-6pm;

Sun 12-5pm

*Buy Sell*

Used University Press books and fine  
literature.

---

---

## BOOKS – DONATIONS

### BANANAS

Childcare Resources Center  
5232 Claremont Ave  
@ 51<sup>st</sup> & Telegraph  
Oakland CA 94618  
658-7353  
[www.bananasinc.org](http://www.bananasinc.org)

Mon, Wed, Thu 9:30am-4:30pm; Tue  
9:30am-8pm; Fri 9:30am-1pm

*Accepts Donations*

Accepts donations of children's and  
parenting books

---

### CHILDREN'S BOOK PROJECT

290 Napoleon #A  
San Francisco, CA 94124  
(Cesar Chavez east to Evans)  
415-401-6315  
[www.childrensbookproject.org](http://www.childrensbookproject.org)

Tue & Thu 3-6pm

*Accepts Donations*

Gives children's good condition books and  
magazines to schools, shelters, and other  
organizations. Accepts donations from  
book drives, individuals, publishers, and  
others.

---



### CITY OF BERKELEY

19

Public Health Clinic  
830 University Ave @ 6<sup>th</sup>  
Berkeley CA 94710  
981-5350  
[www.ci.berkeley.ca.us/  
publichealth/publichealth  
clinic/phc.html](http://www.ci.berkeley.ca.us/publichealth/publichealthclinic/phc.html)

Mon-Fri 8am-12pm and 1-5pm

*Accepts Donations*

Needs children's books, games, and  
videos for waiting rooms.

---

### COMMUNITY CONSERVATION CENTERS

20

Berkeley's Multi-Material  
Recycling Centers  
669 Gilman St @ 2<sup>nd</sup>  
Berkeley CA 94710  
524-0113  
[www.berkeleyrecycling.org](http://www.berkeleyrecycling.org)

Daily 8:30am-4pm

*Accepts Donations*

Accepts clean books for reuse and  
recycling.

---

### TINKER'S WORKSHOP

21

84 Bolivar Dr @ Addison  
(in Aquatic Park)  
Berkeley CA 94710  
644-2577  
[www.tinkersworkshop.org](http://www.tinkersworkshop.org)

Call first: Mon-Thu 1-5pm or by appt

*Repair/Restore Accepts Donations*

Call for acceptance, referral and/or  
schedule. Accepts technical and how-  
to books.

---



# Clothing

Wear it out for Halloween or the office, find fabulous outfits at bargain prices – men, women, and children all come first at these practical and colorful reuse havens, where “vintage” means enduring (and endearing) good quality. There are lots of Levi’s for everyone, as well as flowing dresses, sultry hats, and sturdy boots. Buy, sell, or trade your way to a new wardrobe and consign clothing you no longer use.

## BERKELEY SURPLUS 1

1640 San Pablo Ave @ Cedar  
Berkeley CA 94702  
524-8434

[www.berkeleysurplus.com](http://www.berkeleysurplus.com)

Mon-Fri 10am-5:30pm;

Sat 10am-5pm; Sun 12-4pm

*Buy Sell*

Men’s Army/Navy clothing, blankets, and boots.

## BROWNIES VINTAGE 2

2001 Milvia St @ University  
Berkeley CA 94704  
548-0108

[www.myspace.com/  
browniesvintage](http://www.myspace.com/browniesvintage)

Mon-Sat 11am-6pm

*Sell Consign*

Men’s, women’s, and children’s vintage and handmade clothing and accessories. Specializing in vintage T-shirts from the 70s and 80s.

## BUFFALO EXCHANGE 3

2585 Telegraph Ave @ Parker  
Berkeley CA 94704  
644-9202

[www.buffaloexchange.com](http://www.buffaloexchange.com)

Mon-Sat 11am-8pm; Sun 11am-7pm

*Buy Sell Trade*

Men’s and women’s current styles; must be in good condition.

## CROSSROADS TRADING 4

2338 Shattuck Ave @ Durant  
Berkeley CA 94704  
843-7600

[www.crossroadstrading.com](http://www.crossroadstrading.com)

Mon-Sat 11am-7pm; Sun 12-7pm

*Buy Sell Trade Consign*

Men’s and women’s contemporary clothing, shoes, and accessories.

## GOODWILL STORE, THE 5

2058 University Ave  
@ Shattuck  
Berkeley CA 94704  
649-1287, 534-6666

[www.eastbaygoodwill.org](http://www.eastbaygoodwill.org)

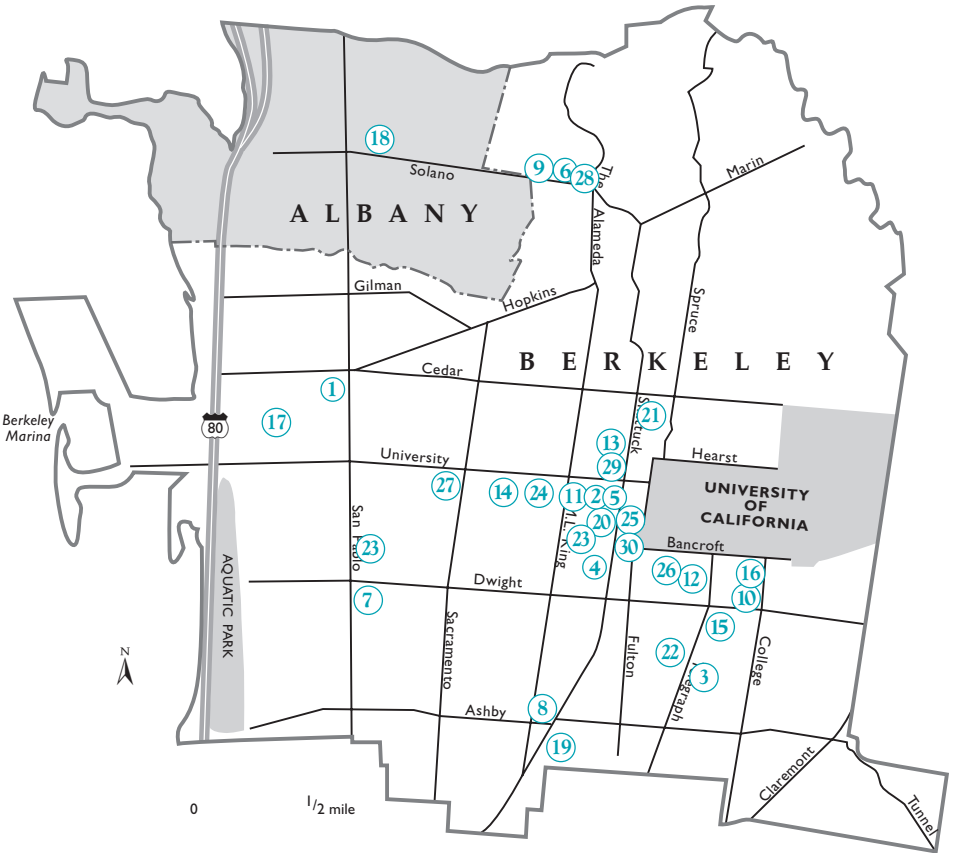
Mon-Sat 10am-8pm; Sun 11am-6pm;

Donate: Mon-Sat 11am-5pm; Sun 12-4pm. Call 534-6666 for large or bulky furniture pick-up.

*Sell Accepts Donations*

Clothing, clothing scraps, and fabric remnants.

## CLOTHING



### HANNAH'S CHILDREN'S RESALE

6

1871 Solano Ave  
Berkeley CA 94707  
525-3488

Mon-Sat 10am-6pm; Sun 11am-4pm  
*Buy Sell Trade Accepts Donations*  
Reusable children's clothing and accessories. Items that can't be resold are placed on a \$1 rack and proceeds are donated to local non-profits.

### ICON VINTAGE

7

2521 San Pablo Ave  
@ Dwight  
Berkeley CA 94702  
848-ICON (4266)

Call to confirm: Tue-Fri 12-6pm;  
Sat 11am-7pm; Sun 11am-6pm  
*Buy Sell Trade Consign*  
60s and earlier – men's, women's, and children's clothing and accessories – jewelry, purses, shoes, and hats.

**LACIS MUSEUM OF  
LACE AND TEXTILES**

8

2982 Adeline St  
Berkeley CA 94703  
843-7178

[www.lacis.com](http://www.lacis.com)

Mon-Sat 12-6pm

*Buy Sell Repair/Restore*

Vintage clothing, lace, linens, wedding dresses, and accessories.

---

**L'ARMOIRE QUALITY  
CONSIGNMENTS**

9

1487 Solano Ave  
@ Curtis & Santa Fe  
Berkeley CA 94702  
527-8026

[www.larmoireconsignments.com](http://www.larmoireconsignments.com)

Mon-Sat 11am-6pm

Consignment by appointment

*Sell Trade Consign*

Women's gently worn apparel and accessories plus the work of local women artists. Goods not sold are donated to charitable organizations.

---

**LORA'S CLOSET**

10

2926 College Ave  
@ Ashby & Russell  
Berkeley CA 94705  
845-3157

[www.lorascloset.com](http://www.lorascloset.com)

Mon-Sat 10am-5:30pm; Sun 12-5pm

Call for consignment hours

*Buy Sell Consign*

Quality resale children's merchandise; maternity clothing on consignment.

---

**LOVE ME TWO TIMES**

11

1964 University Ave @ Milvia  
Berkeley CA 94702  
705-8545

Call first: Mon-Sat 11am-5pm

*Buy Sell Trade*

Vintage Clothing: 50s, 60s, 70s, 80s, jewelry, and oriental rugs.

---

**MANNEQUIN MADNESS**

430 Orange St Ste B  
Oakland CA 94610  
444-0650

[www.mannequinmadness.com](http://www.mannequinmadness.com)

Call for appt

*Buy Sell Consign Rent*

Used mannequins for sale and for rent.

---

**MARS MERCANTILE**

12

Invaders of Closet Space  
2398 Telegraph Ave  
Berkeley CA 94704  
843-6711

[www.marsmercantile.com](http://www.marsmercantile.com)

Daily 11am-7pm

*Sell*

Men's and women's vintage clothes, costumes, hippest already-worn fashions, most gorgeous jewelry and glamorous accessories.

---

**MIXED PICKLES  
ANTIQUES**

13

1746 Shattuck Ave  
Berkeley CA 94709  
649-1353

[www.mixedpickleshome.com](http://www.mixedpickleshome.com)

Tue-Sat 12-5:30pm

*Sell*

Vintage textiles and clothing: Victorian through 1950.

---

## OUT OF THE CLOSET

14

1600 University Ave  
@ California  
Berkeley CA 94703  
841-2088

[www.aidshealth.org](http://www.aidshealth.org) (then click  
*Programs and Out of the Closet*)

Mon-Sat 10am-7pm; Sun 10am-3pm  
Receiving: Mon-Sat 10:30am-5pm; Sun  
10:30am-3pm

Pick-ups: 800-558-8220

*Sell Accepts Donations*

Clothing, household items, furniture,  
books, kitchenware, appliances, etc.  
Cannot take mattresses, waterbeds, or  
toys. Benefits AIDS Healthcare  
Foundation.

---

## ROCK PAPER SCISSORS

Arts Collective  
2278 Telegraph Ave  
@ between 23<sup>rd</sup> & West Grand  
Oakland CA 94612  
238-9171

[www.rpscollective.com](http://www.rpscollective.com)

Wed-Sun 11am-7pm

*Sell Trade*

Retail space for local and independent  
designers, craftsters, musicians, and  
artists to sell their handmade goods. The  
consignment rate is 40/60 for handmade  
clothing, accessories, jewelry, and crafts.  
40% goes to paying the rent, 60% goes  
back to you.

---

## SHARKS

15

2505 Telegraph Ave  
@ Dwight  
Berkeley CA 94704  
841-8736

Mon-Sat 11am-7pm; Sun 12-7pm

*Sell*

Men's and women's full range, rare and  
unusual, popular, and inexpensive  
clothing; costumes; Hawaiian shirts;  
used Levis.

## SLASH CLOTHING

16

2840 College Ave  
@ Russell  
Berkeley CA 94705  
841-7803

Mon-Sat 11am-7pm; Sun 12-5pm

*Sell*

Men's and women's used denim, surplus  
clothing, and Halloween costumes.

---

## SOLA LUCY

17

Consignment Boutique  
803 Delaware St @ 5<sup>th</sup>  
Berkeley CA 94710  
526-8611

Shop: Tue-Sun 11am-5pm

Consignment: Tue, Thu, Sat 11am

until full

*Sell Trade Consign*

Women's upscale clothing, accessories  
and shoes.

---

## SOLANO KIDS RESALE STORE

18

1215 Solano @ Talbot  
Albany CA 94706  
527-6200

Mon-Sat 10am-6pm; Sun 11am-6pm.

Buyer available Wed-Thu 11am-5pm;

Sat 2-5pm

*Buy Sell Trade*

Clothing sizes newborn to 14 years; used  
and new equipment; toys, gifts, and  
shoes. We buy from you 40% cash, 50%  
credit.

---

## STAGECRAFT STUDIOS

19

1854 Alcatraz Ave @ Adeline  
Berkeley CA 94703-2715  
653-4424

[www.stagecraft.com](http://www.stagecraft.com)

Call: Tue-Sat 10am-5:30pm

*Sell Rent Accepts Donations*

Costumes – period, character, animal.  
Lighting equipment, special effects, and  
staging items.

## STITCH LOUNGE

182 Gough St @ Oak  
San Francisco CA 94102  
(near Van Ness & Civic Center  
BART Stations)  
415-431-3739  
[www.stitchlounge.com](http://www.stitchlounge.com)

Thu-Fri 12-6:30pm; Sat-Sun 11am-6pm  
*Sell Consign Rent*

A drop-in urban sewing lounge and unique clothing store. Instruction, tools, supplies, resources, and advice are provided in a professional yet comfortable workspace that encourages the free exchange of ideas between all skill levels.

---

## STOP THE CLOCK

2110 Addison St  
@ Shattuck  
Berkeley CA 94704  
841-2142

Mon-Sat 10:30am-6:30pm  
*Buy Sell*

Men's and women's classic and vintage clothing, accessories, and costumes. Also Hawaiian shirts, costume jewelry, hats, and shoes.

## TEXTILE REPAIR STUDIO

1625 Shattuck Ave Ste 312  
Berkeley CA 94709  
548-2267

Call for hours

*Repair*

Repairs any fabric – moth hole damaged wood, wool or hooked rugs, afghans, blankets, and quilts. Wardrobe tune-ups. Call before you come by.

---

## TIME ZONE VINTAGE

2556 Telegraph Ave @ Blake  
Berkeley CA 94702  
665-4055

Daily 11am-7pm

*Buy Sell Trade Consign*

Men's and women's vintage clothing, antique furniture, and collectibles.

---

## TWISTERS VINTAGE

2445 San Pablo Ave  
@ Dwight  
Berkeley CA 94702  
548-9478

[www.twistersvintage.com](http://www.twistersvintage.com)

Tue-Sun 12-6pm

*Buy Sell Trade*

Vintage style with a twist; pre-80s men's and women's clothing, hats and accessories, plus furnishings and whatnots.

---

## CLOTHING – DONATIONS

### A MINER MIRACLE

414 Mason St Ste 501 @ Geary  
(1 block west of Union Sq)  
San Francisco CA 94702  
415-217-7230  
[www.aminermiracle.org](http://www.aminermiracle.org)

Mon-Thu 9am-4pm

*Accepts Donations*

Men's and women's interview appropriate clothing and accessories that are professional, contemporary, in excellent condition, cleaned, pressed, and on hangers – no bags or boxes.

---

### BANANAS

Childcare Resources Center  
5232 Claremont Ave @ 51<sup>st</sup> &  
Telegraph  
Oakland CA 94618  
658-7353  
[www.bananasinc.org](http://www.bananasinc.org)

Mon, Wed, Thu 9:30am-4:30pm; Tues  
9:30am-8pm; Fri 9:30am-1pm

*Accepts Donations*

Accepts donations of toys, children's clothing, infant formula, diapers, baby equipment and baby food, and maternity clothes.

---

### BOSS

Building Opportunities for  
Self-Sufficiency  
2065 Kittredge St Ste E  
@ Shattuck  
Berkeley CA 94704  
649-1930

[www.self-sufficiency.org/  
giving.html](http://www.self-sufficiency.org/giving.html) (select *Wish List* or

*Community Donations*)

Mon-Fri 8am-4pm

*Accepts Donations*

Warm adult coats, socks, and towels.

### MAKING MEMORIES

### BREAST CANCER

### FOUNDATION

Brides Against Breast Cancer  
Portland OR  
503-252-3955

[www.makingmemories.org/](http://www.makingmemories.org/)

[brides\\_against\\_breast\\_cancer.html](http://brides_against_breast_cancer.html)

*Accepts Donations*

Accepts donations of new and used wedding dresses, accessories, shoes, and estate jewelry. The items are sold and the proceeds are used to grant memorable wishes to terminal breast cancer patients. Dresses that cannot be resold due to torn hems, wine stains or color imperfections are turned into beautiful bride quilts. Stitchers cut apart gowns, remove embellishments and transform the fabrics into a queen size quilt top.

---

### SQUARE MEALS PROJECT

649-8154

Call for pick-up

*Accepts Donations*

Roving Pantry: distributes grocery bags of non-perishable food, clothing, blankets, towels, and toiletries at parks last two Sundays of each month. Next to last Sun, 3:30-4pm Lafayette Sq Park, Oakland; last Sun, 3:30-4pm People's Park, Berkeley. Accepts wearable clothing and shoes.

23

## WARDROBE FOR OPPORTUNITY

Dressing for Success Program

570 14<sup>th</sup> St Ste 5

@ Clay & Jefferson

(2 blocks west of 12<sup>th</sup> St BART)

Oakland CA 94612

463-4100

[www.wardrobe.org](http://www.wardrobe.org)

See web site for drop-off locations & hours

*Accepts Donations*

Accepts gently-worn, work-appropriate clothing and accessories for distribution to female and male job seekers.

## YOUTH EMERGENCY ASSISTANCE HOSTEL (YEAH)

24

Seasonal Shelter for Homeless Youth

1744 University Ave

@ Grant & McGee

Berkeley CA 94703

704-9867

[www.yeah-berkeley.org](http://www.yeah-berkeley.org)

Contact for hours

*Accepts Donations*

Men's athletic shoes with sufficient wear left on them, large and extra-large tee and sweat shirts, new socks, and boxers.

---

## CLOTHING – SHOE REPAIR

### BERKELEY SHOE AND LUGGAGE REPAIR

25

133 Berkeley Sq

Berkeley CA 94704

843-2933

Mon-Fri 10am-6pm; Sat 10am-5pm

*Repair*

Repairs shoes, boots, and luggage.

### JAY'S REPAIR

28

1869 Solano Ave

Berkeley CA 94704

526-3316

Mon-Sat 10am-6pm

*Repair*

Repairs shoes while you wait.

---

### DURANT SHOE REPAIR

26

2432 Durant Ave

Berkeley CA 94704

644-2040

Mon-Sat 9:30am-6pm

*Repair*

Repairs shoes.

---

### MODEL SHOE RENEW

29

1934 Shattuck Ave

Berkeley CA 94704

(2 blocks north of University)

843-7218

Mon-Sat 8:30am-7pm

*Repair Sell*

Instant shoe repair as well as refinishing and dyeing of shoes and other leather goods. Shoe and foot care products.

---

### HARRY'S SHOE REPAIR

27

1478 University Ave

Berkeley CA 94702

540-7170

Mon-Fri 10am-5pm; Sat 10am-3pm

*Repair*

Repairs shoes while you wait.

---

### PAUL'S SHOE REPAIR SERVICE

30

2281 Shattuck Ave

Berkeley CA 94704

843-1570

Mon-Sat 8am-6pm

*Repair Sell*

Orthopedic work a specialty. Same day service. Orthopedic shoes and shoe care products.

## Collectibles

The fun reusables! Some of us feel good in a room full of baseball cards, surrounded by the fragile dolls of yesteryear, with stacks of outrageous comics, or reflecting in the warm glow of rare coins. Collectibles can be anything – they are the things we want to keep “just because” or may be because we think they’ll be “worth something” someday.

**A GOOD PLACE TO START** ①  
1126 Solano Ave  
@ Cornell  
Albany CA 94706  
528-6383

Call for free phone or in-home consultation.

*Buy Sell Consign Repair/Restore*  
Estate sale services and purchase of unwanted items. Has been selling or purchasing estates or single items since 1990. Also assists with the removal of goods from a property, either your own or a relatives. Facilitates the sale of contents and donation of the remainders which prevents reusables from going into a dumpster.

---

**BERKELEY**  
**COLLECTIBLE SHOP** ②  
2280 Fulton St  
Berkeley CA 94704  
848-3199

Mon, Wed, Thu, Sat 12-5pm  
*Buy Sell Trade Rent*

Collectibles under \$50: coins and stamps, postcards, glassware, silverware, and porcelain.

**BONE ROOM, THE** ③  
1569 Solano Ave  
Berkeley CA 94707  
526-5252  
[www.boneroom.com](http://www.boneroom.com)

Tue-Sat 11am-6pm  
*Buy Sell Rent*

Natural history items including bones, fossils, and insects.

---

**CARTER WEST** ④  
**ANTIQUES AND ESTATE**  
**LIQUIDATIONS**  
AAA Estates Liquidation  
Services  
2371 San Pablo Ave @  
Channing  
Berkeley CA 94702  
848-8317

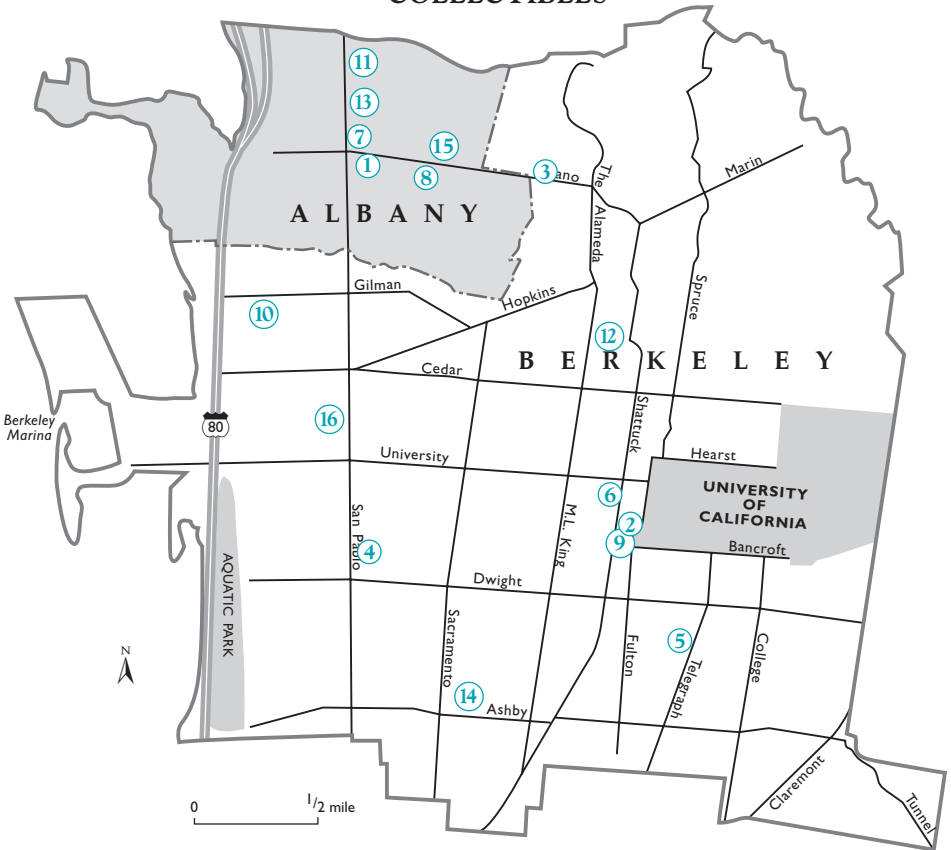
Wed-Sun 12-5:30pm

*Buy Sell Trade Consign Rent*

Wide variety of items including antique furniture, lighting, books, and collectibles. Also conducts estate sales.



## COLLECTIBLES



### COLLECTOR'S REALM 5

2566 Telegraph Ave #D  
Berkeley CA 94704  
540-1182  
[www.cr3.com](http://www.cr3.com)

Mon-Thu 12-8pm; Fri-Sat 12-9pm;  
Sun 12-7pm

*Buy Sell Trade*

Vintage to current: sports, rock, and movie memorabilia; baseball cards; comic books; adult videos and magazines; DVDs; punk; and rental videos.

### COMIC RELIEF 6

2026 Shattuck Ave  
@ between Addison &  
University  
Berkeley CA 94704  
843-5002

[www.comicrelief.net](http://www.comicrelief.net)

Mon-Sat 10am-10pm; Sun 11am-9pm

**Buy/trade only on Tue & Thu**

*Buy Sell Trade Consign Accepts Donations*  
Collectible comics and graphic novels.  
Immaculately kept reprints, graphic novels, and back issues.

**DAVE'S DOUGOUT, INC.** (7)

863 San Pablo Ave #B  
@ Solano  
Albany CA 94706  
524-7120

[www.davesdougout.com](http://www.davesdougout.com)

Call first: Mon-Fri 11am-7pm;  
Sat 10am-7pm; Sun 11am-6pm  
*Buy Sell Trade*  
Sports cards and collectibles.

---

**FISHER'S CUSTOM DESIGN JEWELRY** (8)

1488 Solano Ave @ Curtis  
Albany CA 94706  
524-0400

Tue-Sat 11am-5:30pm  
*Buy Sell Repair/Restore*  
Estate jewelry and repair work. Sometimes uses recycled gold.

---

**FOSTER COIN & STAMP COMPANY** (9)

2189 Bancroft Way  
Berkeley CA 94704  
845-3015  
<http://home.pacbell.net/tfdf/>

Daily 1-5pm and by appt  
*Buy Sell*  
Rare old coins, stamps, and gold and silver scrap.

---

**GILMAN TRADING COMPANY, INC.** (10)

808 Gilman St  
Berkeley CA 94710  
524-5500  
[www.gilmantrading.com](http://www.gilmantrading.com)

Daily 9am-6pm  
*Buy Sell Trade Consign Rent*  
Antiques, fine art, and collectibles.

---

**GOLD CENTER** (11)

512 San Pablo Ave @ Castro  
Albany CA 94706  
525-3176

Mon-Sat 11am-6pm  
*Buy Sell Repair/Restore*  
Jewelry and watch repair. Also carries used gold jewelry, gold watches, clocks, candlesticks, cut glass, and charms.

---

**GROVE ANTIQUES** (12)

1417 MLKing #A  
Berkeley CA 94709  
525-9120

Sat 1:30-5:30pm  
*Sell*  
Antiques, "smalls," linens, kitchen-ware, glass, china, jewelry, and other collectibles.

---

**JEWELRY REPAIR CENTER** (13)

747 San Pablo Ave  
@ Washington  
Albany CA 94706  
525-5575

Mon-Sat 11am-6pm  
*Repair/Restore*  
Repair and resize jewelry, replace stones – make it like new!

---

**MILITARY ARTIFACTS AND COLLECTIBLES** (14)

1601 Ashby Ave  
Berkeley CA 94703  
841-2244  
[www.macw.com](http://www.macw.com)

Call first: Tue-Sat 12-4pm and by appt  
*Buy Sell Trade Consign Rent Repair/Restore*  
Military collectibles and clothing.

---

**PILECKI'S ANTIQUE  
CAMERA AND IMAGE  
EXCHANGE**

Albany CA 94706  
527-5905

Call for appt

*Buy Sell Consign*

Antique collectible cameras and old  
photographs.

---

**SCHMIDT'S TOBACCO (15)  
AND TRADING CO.**

1492 Solano Ave @ Santa Fe  
Albany CA 94706  
525-1900

Sun-Wed 12pm-12am; Thu-Sat 12pm-1am

*Buy Sell*

Estate pipes, canes, smoking accessories  
sold in a pub setting.

**SPILMAN'S COLLECTIBLES (16)**

Home of the Family Jules  
1730 San Pablo Ave  
Berkeley CA 94702  
526-5770

[www.thefamilyjules.com](http://www.thefamilyjules.com)

Wed-Sat 10am-6pm

*Buy Sell Trade Consign*

Wide variety of collectibles including  
glassware, dolls, ceramics, books, jewelry,  
lamps, antiques, and furniture.

## Entertainment Equipment

Play today the reuse way. Repairs and service are the main focus of these ever-useful neighborhood businesses. TVs, stereos, radios, and even antique cameras bought, sold, and repaired. For your entertainment or hobby, buy good quality reusable equipment and get the maximum performance you deserve.

**ALBANY VIDEO SERVICE (1)**

933 San Pablo Ave @ Solano  
Albany CA 94706  
524-4447

[www.albanyvideoservice.com](http://www.albanyvideoservice.com)

Tue-Fri 10am-6pm; Sat 11am-2pm

*Repair/Restore*

Electronic repair facility for TVs, VCRs,  
DVDs and more; free in-shop estimates.

**B&K TV-VCR SERVICE (2)**

962 A San Pablo Ave  
Albany CA 94706  
524-2115

Mon-Fri 10am-6pm; Sat 10am-5pm

*Repair/Restore*

Repair services for TV, VCR, video, and  
camcorders.

**EAST BAY AUDIO REPAIR** (3)  
2835 San Pablo Ave #1/2  
@ Heinz  
Berkeley CA 94702  
540-8868

Mon-Fri 10am-6pm and by appt  
*Repair/Restore*  
Repairs pro audio musical and recording equipment, sound systems, and DJ equipment.

**EID'S TV & ELECTRONICS** (4)  
2508 Channing Way  
Berkeley CA 94704  
848-5000

Daily 11am-7pm  
*Sell Trade Rent Repair/Restore*  
Sale and service of VCR, TV, stereos, phones, and computers.

**HANDY ELECTRONIC SERVICE** (5)  
1467 University Ave  
@ Sacramento  
Berkeley CA 94702  
548-1782

Mon-Sat 9:30am-5pm  
*Repair/Restore*  
Repairs reusable electronics, including TV, VCR, stereos, and camcorders.

**MUSIC LOVERS AUDIO** (6)  
1995 El Dorado Ave  
@ Sutter & Hopkins  
Berkeley CA 94707  
558-1000  
[www.musicloversaudio.com/  
music\\_lovers\\_bargains.html](http://www.musicloversaudio.com/music_lovers_bargains.html)

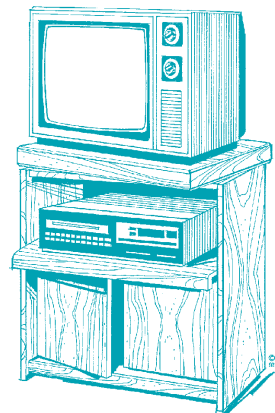
Mon-Fri 10:30am-6:30pm; Sat 10am-6pm; Sun 12-5pm  
*Buy Sell Trade Consign*  
Audio components.

**SOUND WELL, THE** (7)  
1718 University Ave  
@ McGee  
Berkeley CA 94703  
549-2126

[www.thesoundwell.com](http://www.thesoundwell.com)  
Fri-Sat 9:30am-5:30pm; Sun 12-4pm  
*Sell Repair/Restore*  
Quality used stereo equipment and repair service.

**TINKER'S WORKSHOP** (8)  
84 Bolivar Dr @ Addison  
(in Aquatic Park)  
Berkeley CA 94710  
644-2577

[www.tinkersworkshop.org](http://www.tinkersworkshop.org)  
Call first: Mon-Thu 1-5pm or by appt  
Call for acceptance, referral, and/or schedule  
*Repair/Restore Accepts Donations*  
Accepts public address sound equipment for small- to medium-sized events.



## ENTERTAINMENT EQUIPMENT



## ENTERTAINMENT EQUIPMENT - PHOTOGRAPHIC

**LOOKING GLASS PHOTO** ⑨  
2848 Telegraph Ave @ Oregon  
Berkeley CA 94705  
548-6888  
[www.lookingglassphoto.com/  
used.html](http://www.lookingglassphoto.com/used.html)

Mon-Fri 10am-5pm  
*Buy Sell Repair/Restore*  
Used photographic equipment sales and rentals – lighting kits, digital outfits, slide and film scanners, cameras, tripods, lenses, and backgrounds.

**A-1 PHOTO LAB** ⑩  
1629 University Avenue  
@ Sacramento  
Berkeley CA 94703  
841-1233  
[www.a1photolab.com](http://www.a1photolab.com)

Mon-Fri 9:30am-6pm, Sat 10am-5pm  
*Repair Rental*  
Repair and rent cameras, camcorders, VCRs, DVD players, and computers. Photo restoration, video transfer, and repair damaged VHS tapes.

## Furnishings

Roll out the reusable rug! Oriental rugs and crystal chandeliers provide generations of pleasure for discriminating shoppers in this area's reusable furnishings shops. Many do repair and service – cleaning, refinishing, customizing, and you can buy, sell, or trade for things you like best. Get an almost-new desk, a 20s designer table or an antique brass lamp with a custom shade.

### BERKELEY OUTLET

1

711 Heinz Ave @ below 7<sup>th</sup>  
(Enter driveway at 701-703 Heinz  
and go all the way to the back)  
Berkeley CA 94710  
549-2896

Tue-Sat 10am-5pm

*Buy Sell Trade*

High quality used office furniture made by top manufacturers such as Steelcase and Herman Miller.

### CALIFORNIA HISTORICAL DESIGN

2

2988 Adeline @ Ashby  
Berkeley CA 94703  
647-3621  
[www.acstickley.com](http://www.acstickley.com)

Call for appt

*Buy Sell Trade Consign*

Items popular in California around 1910. Stickley furniture, American art pottery, studio copperwork, and California paintings.

### CANING SHOP

3

926 Gilman St @ 8<sup>th</sup>  
Berkeley CA 94710  
527-5010

[www.caning.com](http://www.caning.com)

Tue-Fri 10am-6pm; Sat 10am-2pm

*Sell Repair/Restore*

Repairs woven furniture and supplies craftspeople with caning and basketry supplies.

### CHATEAU

4

835 San Pablo  
Albany CA 94706  
527-3700

Tue-Sat 11am-6pm; Sun 12-5pm

*Buy Sell Trade Consign*

Antiques, jewelry & beads, collectibles, home decor, artwork, rugs, and porcelain & china. Plus original art and jewelry.

### FENTON MACLAREN

5

1325 San Pablo Ave  
@ Gilman  
Berkeley CA 94702  
526-5377

[www.fentonmaclaren.com](http://www.fentonmaclaren.com)

Mon-Sat 10am-5:30pm; Sun 11am-5pm

*Buy Sell*

Bay Area's largest selection of traditional furniture from 20s and 30s refinished to look like new.

### OMEGA TOO

6

2204 San Pablo Ave  
Berkeley CA 94702  
843-3636

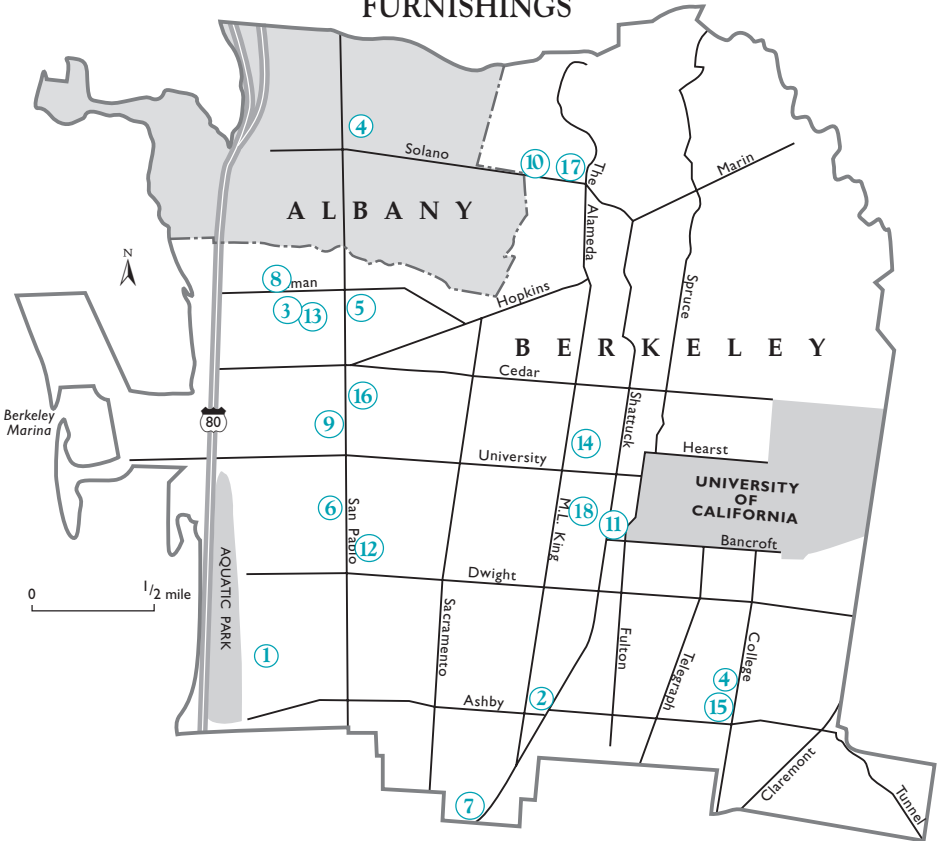
[www.omegatoo.com](http://www.omegatoo.com)

Mon-Sat 10am-6pm; Sun 12-5pm

*Buy Sell Rent Repair/Restore*

Repairs and restores antique lighting. Wide variety of replacement glass and parts in stock.

## FURNISHINGS



### PEOPLE'S BAZAAR

3258 Adeline St @ Alcatraz  
Berkeley CA 94703  
655-8008

[www.people'sbazaar.com](http://www.people'sbazaar.com)

Mon-Sat 9am-5pm; Sun 12-5pm

*Buy Sell Trade Consign*

Victorian specialty: quality used furniture.

7

### RELIANCE ANTIQUES

830 Gilman St @ 6<sup>th</sup>  
Berkeley CA 94710  
525-7003

[www.relianceantiques.com](http://www.relianceantiques.com)

Mon-Sat 10am-5:30pm;

Sun by appt only

*Buy Sell Rent Repair/Restore*

Antique and classic gas stoves, especially Wedgewood and O'Keefe Merritt.

8

**SPILMAN'S  
COLLECTIBLES**

9

Home of the Family Jules  
1730 San Pablo Ave  
Berkeley CA 94702  
526-5770

[www.thefamilyjules.com](http://www.thefamilyjules.com)

Wed-Sat 10am-6pm

*Buy Sell Trade Consign*

Lots of furniture in many types and qualities; antiques and collectibles.

**SUE JOHNSON CUSTOM  
LAMPS & SHADES**

10

1745 Solano Ave @ Ensenada  
Berkeley CA 94707  
(see website for directions)  
527-2623

[www.suejohnsonlamps.com](http://www.suejohnsonlamps.com)

Mon-Sat 12-6pm; Sun 12-5pm

*Sell Repair/Restore*

Hand-crafted home lighting and lamp repair. Create a lamp using your treasured object; update an old lamp with a new shade.

**TROUT FARM ANTIQUES**

11

2179 Bancroft Way  
@ between Fulton & Shattuck  
Berkeley CA 94704  
843-3565

Thu-Sat 1-5pm and by appt

*Buy Sell Trade Rent Repair/Restore*

Mid-20<sup>th</sup> century designer furniture, art, and collectibles.

**TWISTERS VINTAGE**

12

2445 San Pablo Ave  
@ Dwight  
Berkeley CA 94702  
548-9478

[www.twistersvintage.com](http://www.twistersvintage.com)

Tue-Sun 12-6pm

*Buy Sell Trade*

Clothing, furniture, and whatnots including nostalgic children's books & toys.

---

**FURNISHINGS – RUGS**

**EMMETT EILAND'S  
ORIENTAL RUG CO.**

13

1326 9<sup>th</sup> St @ Gilman  
Berkeley CA 94710  
526-1087

[www.internetrugs.com](http://www.internetrugs.com)

Mon-Sat 10am-5:30pm; Sun 12-5pm

*Buy Sell Repair/Restore*

Repairs, restores, and washes hand-made oriental rugs.

**GOLDEN AGE ORIENTAL  
RUG CO.**

14

(formerly Persian Mercantile Co.)  
1910 Bonita Ave @ Hearst  
Berkeley CA 94704  
843-0552

[www.goldenagerugs.com](http://www.goldenagerugs.com)

Call for appt

*Buy Sell Repair/Restore*

Repairs carpets and buys and sells handmade decorative carpets from India, Pakistan, and Nepal.



**H. TULANIAN & SONS** (15)  
2998 College Ave @ Webster  
Berkeley CA 94705  
845-2914  
Mon-Fri 7am-12pm; Sat 9am-12pm  
*Sell Repair/Restore*  
Oriental and domestic rugs – washing,  
repair, and restoration.

---

**IMPERIAL RUG  
CLEANING COMPANY** (16)  
1716 San Pablo Ave  
@ Virginia  
Berkeley CA 94702-1336  
526-5664  
[www.imperialrugcleaning.com](http://www.imperialrugcleaning.com)  
Mon-Fri 8am-5pm; Sat 9am-3pm  
*Buy Sell Repair/Restore*  
Oriental, domestic, and handmade rugs.

---

**SOLANO ORIENTAL  
RUG GALLERY** (17)  
1849 Solano Ave  
@ The Alameda  
Berkeley CA 94707  
528-7847  
[www.solanorug.com](http://www.solanorug.com)  
Mon-Sat 10am-5:30pm; Sun 12-5pm  
*Buy Sell Trade Consign Rent Repair/  
Restore*  
Specializing in hand-washing and  
restoring oriental rugs.

---

## FURNISHINGS – DONATIONS

**BOSS** (18)  
Building Opportunities  
for Self-Sufficiency  
2065 Kittredge St Suite E  
@ Shattuck  
Berkeley CA 94704  
649-1930  
[www.self-sufficiency.org/  
giving.html](http://www.self-sufficiency.org/giving.html) (select *Wish List* or  
*Community Donations*)  
Mon-Fri 8am-4pm  
*Accepts Donations*  
Dressers and beds, twins and full size  
mattresses.

## Home & Yard

Hoe or sew with tools to go! Rent the tools you need for home and garden, to recondition your vacuum cleaner, or fix up that great old gas stove. Even bigger home projects can be handled with equipment from the bigger rental stores. The early bird gets the floor sander, so call ahead to make sure what you want hasn't already stepped out for the day.

### ABC DIAPER SERVICE

1

1800 2<sup>nd</sup> St @ Hearst  
Berkeley CA 94710  
549-1133  
[www.abcdiaper.com](http://www.abcdiaper.com)

Mon-Fri 8am-5pm

Rent

Convenient home delivery of 100% cotton diapers. Locally owned and operated since 1945.

### BERKELEY VACUUM CENTER

2

2108 Berkeley Way  
@ Shattuck  
Berkeley CA 94704  
540-6248  
[www.berkeleyvacuum.com](http://www.berkeleyvacuum.com)

Mon 9:30am-1pm;

Tue-Fri 9:30am-5:30pm;

Sat 9:30am-3pm

*Sell Rent Repair/Restore*

Vacuum cleaners, lamps, steam cleaners, carpet shampoo machines, and sewing machines. Sharpening services on-site.

### CACTUS JUNGLE

3

1509 4<sup>th</sup> St @ Cedar  
Berkeley CA 94710  
(Gilman St. exit off I-80)  
558-8650

[www.cactusjungle.com](http://www.cactusjungle.com)

Wed-Mon 10am-5pm

*Sell Trade Accepts Donations*

For unwanted hazardous spiny cacti, provides credit for cost of removing plants that are salvageable and sellable. Recycles plastic gallon and nursery containers to wholesale growers.

### CITY OF BERKELEY TOOL LENDING LIBRARY

4

1901 Russell St @ MLK  
Berkeley CA 94703  
981-6101

[www.berkeleypubliclibrary.org/  
tool](http://www.berkeleypubliclibrary.org/tool)

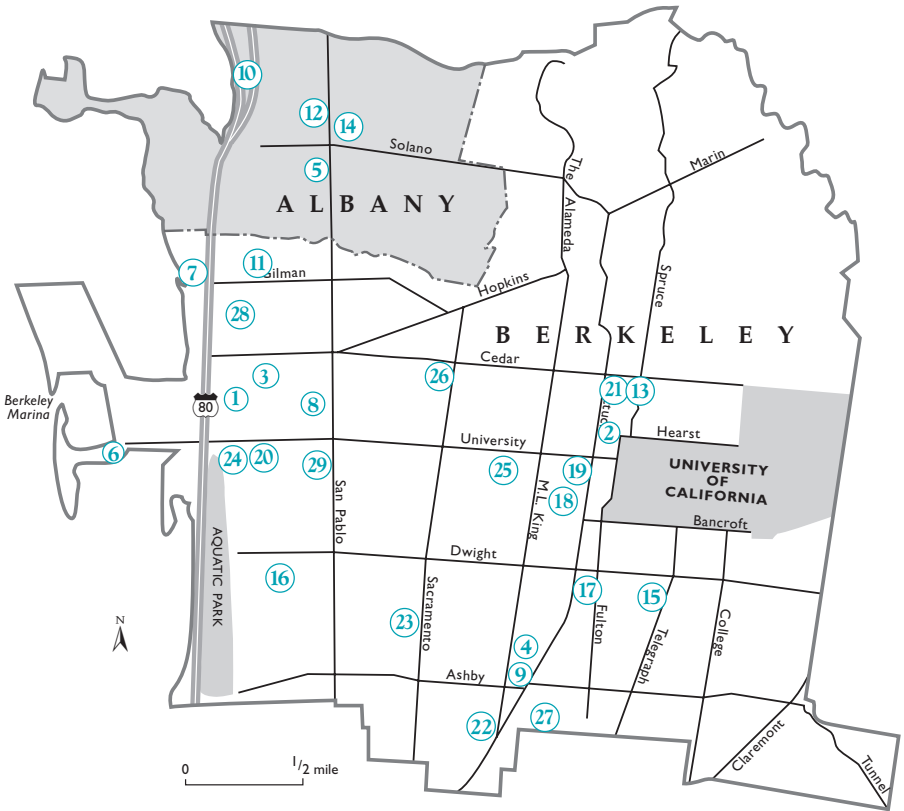
Wed-Thu 12-7:30pm; Fri 1-5:30pm;

Tue & Sat 10am-5:30pm

*Rent Accepts Donations*

Lends tools to Berkeley residents and property owners with ID. Accepts donations of good quality tools in good condition. Does not have gas powered or compressed air tools, or automotive repair tools.

## HOME AND YARD



### EAST BAY PAINT

990 San Pablo Ave  
 @ Buchanan  
 Albany CA 94706  
 524-6582  
 benjaminmoore.com

Mon-Fri 7am-5:30pm; Sat 8am-5pm  
 Sell

Back-to-nature environmentally friendly  
 paint-stripper and Eco Spec paint.

5

### FREE COMPOST

City of Berkeley  
 160 University Ave  
 Berkeley CA 94702  
 (next to Adventure Playground at  
 Berkeley Marina)

Berkeley residents only; last Fri of the  
 month, Feb-Nov loader available  
 8:45am-12pm; load your own 12-2pm  
 Organic compost made from City's yard  
 debris and food scraps. Free delivery to  
 school and community gardens.

6

## GOLDEN GATE FIELDS 7

1100 Eastshore Hwy  
@ Gilman  
Berkeley CA 94710  
(see hay vendors in south lot at  
Gilman)  
559-7300  
[www.goldengatefields.com](http://www.goldengatefields.com)

Daily 8am-1pm

*Sell*

Manure/straw/hay – negotiate terms  
with vendors.

---

## GOLDEN GATE PALMS AND EXOTICS

420 So 3<sup>rd</sup> St @ Cutting  
Richmond CA  
(Look for large palm trees and  
nursery signs)  
925-325-PALM  
[www.goldengatepalms.com](http://www.goldengatepalms.com)

Mon-Fri 8am-4pm; Sat 9am-4pm; Sun  
10am-4pm; closed Sundays 10/1-3/1

*Sell Trade Rent Accepts Donations*

Palm and tropical plant rescue and  
resale. Specializes in palm trees and  
other climatically suitable exotic plant  
materials for Northern California.

---

## J. CASEBER WASHERS AND DRYERS 8

1908 10<sup>th</sup> St @ University  
Berkeley CA 94710  
548-4419

Tue-Sat 9am-5pm; Mon by appt

*Buy Sell Repair/Restore*

Refurbished Whirlpool washing ma-  
chines; dryers including Kenmore,  
Kitchen Aid, and Roper. Will make  
service calls.

---

## JACO ENVIRONMENTAL Appliance Recycling Program Toll free: 800-299-7573 [www.appliancerecycling.com](http://www.appliancerecycling.com)

*Accepts Donations*

Picks up and recycles working refrigerators  
and freezers. Eligible PG&E residential  
customers in Alameda County receive this  
service free of charge and may be eligible  
for a rebate. Picks up and recycles other  
appliances for a fee.

---

## LACIS MUSEUM OF LACE AND TEXTILES 9

2982 Adeline St  
Berkeley CA 94703  
843-7290  
[www.lacis.com](http://www.lacis.com)

Mon-Sat 12-6pm

*Buy Sell Repair/Restore*

Antique lace and textiles dating from  
the 14<sup>th</sup> c. and fine vintage linens.

---

## LIGHTENING THE LOAD House & Landscape Clearing 437-9207

*Sell Consign Repair/Restore Accepts  
Donations*

Will clear your house/landscape of  
unwanted stuff, disperse it through local  
recycling and hazardous waste programs,  
consignment shops, homeless shelters,  
and medical supply programs.

---

## LOCKS OF LOVE 2925 10<sup>th</sup> Ave No Ste 102 Lake Worth FL 33461 561-963-1667 [www.locksoflove.org](http://www.locksoflove.org)

*Accepts Donations*

Accepts 10 inch long human hair, in a  
braid or pony tail, for use in hairpieces for  
financially disadvantaged children  
suffering from long-term hair loss. Please  
visit the web site for hair donation  
requirements or call.

---

**LUMBER BARON, THE** (10)  
500 Cleveland Ave @ Solano  
Albany CA 94710  
526-7224  
www.thelumberbaron.com/  
timberpics.shtml

Mon-Fri 7:30am-5pm; Sat 9am-3pm  
*Sell*  
Reclaimed lumber and high quality  
redwood from resawn bridge timbers.

---

**PICTURE IT SOLD!** (11)  
600 Harrison St  
Berkeley CA 94710  
525-7653  
www.picitsold.com

Mon-Fri 10am-6pm; Sat 10am-5pm  
*Consign*  
Sells consignment goods for you on Ebay.

---

**PRECISION JEWELERS II** (12)  
800 San Pablo Ave Ste A  
@ Washington  
Albany CA 94706  
527-1028

Mon-Sat 10am-6pm  
*Buy Sell Repair/Restore*  
Watch and jewelry repair.

---

**QUILT AND TEXTILE  
REPAIR** (13)  
1625 Shattuck Ave Ste 312  
@ Virginia  
Berkeley CA 94709  
548-2267  
www.quiltrepair.com

Call first: Mon-Fri 12-7pm; Sat 12-5pm  
*Sell Repair/Restore*  
Expert textile repair, mending, and  
restoration services. Refurbishes quilts,  
afghans, rugs, coverlets, clothing of all  
types, and many other cloth items.

---

**TIME MASTERS** (14)  
1145 Solano Ave  
@ San Pablo  
Albany CA 94706  
528-8433

Mon, Wed, Fri 10am-6pm;  
Tue 12-6pm; Sat 10am-5pm  
*Sell Repair/Restore*  
Clocks, watches, and jewelry.

---

**TINY TOTS DIAPER  
SERVICE**  
800-794-5437  
www.tinytots.com

Mon-Fri 9am-3pm  
*Rent*  
Convenient home delivery of 100%  
cotton diapers plus video lending library.

---

**UNI TECH ELECTRONICS** (15)  
2594 Telegraph Ave @ Parker  
Berkeley CA 94704  
644-2277 or 524-3883

Mon-Fri 11am-8pm;  
Sat-Sun 11am-7pm  
Also at 1615 Solano Ave: Mon-Sat  
10am-7pm  
*Buy Sell Trade Rent Repair/Restore*  
Mobile cellular phones, computers,  
electronics, and entertainment equip-  
ment: sell, service, repair, rent, and  
recycle.

---

---

## HOME AND YARD – DONATIONS

---

### ALAMEDA COUNTY

Paint Give-A-Way Program

800-606-6606 x6

[www.household-hazwaste.org](http://www.household-hazwaste.org)

Call for hours

*Accepts Donations*

Alameda County residents only. Free latex paint available on specific days. Call for program details and to donate or request paint. Three rotating locations – Oakland, Hayward, and Livermore. Swap Shed for common hardware store products. Schedules varies/call for details.

---

### BERKELEY EAST BAY HUMANE SOCIETY

16

2700 9<sup>th</sup> St @ Carleton

Berkeley CA 94710

845-7735

[www.berkeleyhumane.org/  
Donations/goods.html](http://www.berkeleyhumane.org/Donations/goods.html)

Tue-Sun 11am-7pm

*Accepts Donations*

Cell phones, clean bedding, towels, and animal supplies.

---

### BERKELEY FOOD AND HOUSING PROJECT

17

2140 Dwight Way @ Dana

Berkeley CA 94704

649-4965 x315

[www.bfhp.org](http://www.bfhp.org)

Call first

*Accepts Donations*

Food, clean sleeping bags, linens, bath towels, personal care items, unopened over-the-counter medication, pots, pans, and silverware. See web site for donation wish list.

---

### BOSS

18

Building Opportunities for  
Self-Sufficiency

2065 Kittredge St Ste E

@ Shattuck

Berkeley CA 94704

649-1930

[www.self-sufficiency.org/  
giving.html](http://www.self-sufficiency.org/giving.html) (select *Wish List* or  
*Community Donations*)

Mon-Fri 8am-4pm

*Accepts Donations*

Blankets, bedding, and towels.

---

### CINGULAR WIRELESS

19

2180 Shattuck Ave @ Center

Berkeley CA 94704

486-0668

[www.cingular.com](http://www.cingular.com)

Mon-Fri 9am-8pm; Sat 9am-6pm;

Sun 11-5pm

*Accepts Donations*

Accepts cellular telephones for recycling. Benefits “Keep America Beautiful.”

---

### CITY OF BERKELEY

20

Animal Care Services

2013 2<sup>nd</sup> St @ Addison

Berkeley CA 94710

981-6600

[www.ci.berkeley.ca.us/  
animalservices](http://www.ci.berkeley.ca.us/animalservices)

Mon, Tue, Thu, Sat 10am-4pm;

Wed 10am-7pm; Sun 11am-3pm

*Accepts Donations*

Clean bedding, towels, and animal supplies.

---

## ELEPHANT PHARMACY (21)

1607 Shattuck Ave @ Cedar  
Berkeley CA 94702  
549-9200  
[www.elephantpharmacy.com](http://www.elephantpharmacy.com)

Call first: Mon-Sat 8:30am-11pm;  
Sun 9am-10pm

*Accepts Donations*

Accepts cell phones, eyeglasses, hearing aids, and kid's sports equipment. Call for current programs.

---

## HOME AT LAST ANIMAL RESCUE

653-0370

[www.homeatlastrescue.org](http://www.homeatlastrescue.org)

Call for hours

*Accepts Donations*

Rescues primarily cats and dogs from East Bay shelters. Accepts dog and cat food, animal supplies, pet beds, blankets, towels, leashes, collars, and brushes.

---

## REBUILDING TOGETHER ALBANY-BERKELEY-EMERYVILLE (22)

(Formerly Christmas in April)  
3318 Adeline St @ Alcatraz  
Berkeley CA 94703  
644-8979

[www.rebuildingtogetherabe.org](http://www.rebuildingtogetherabe.org)

Varies – call first

*Repair/Restore Accepts Donations*

Volunteer program to provide safety repairs and home modifications for low-income seniors and people with disabilities. Deadline for October renovations is July 1, deadline for April renovations is October 1.

Maintenance/building materials in good, clean, working condition, such as lumber, windows, insulation, bathroom fixtures, ladders, carpentry and yard tools, light fixtures, cabinets, paint brushes, and supplies. Paint only in five gallon buckets. Also accepts office supplies and trash bags. Call in advance to make a donation. Please do not drop off outside.

---

## SPIRAL GARDENS (23)

Community Food Security  
Project  
2838 Sacramento St  
@ Oregon  
Berkeley CA 94702  
843-1307

[www.spiralgardens.org](http://www.spiralgardens.org)

Call first: Tue, Thu 8am-5pm;  
Sat 11am-4pm

*Sell Accepts Donations*

Accepts ceramic and plastic nursery pots for reuse. Sells worms for composting.

---

## SQUARE MEALS PROJECT

649-8154

Call for pick-up

*Accepts Donations*

Roving Pantry: distributes grocery bags of non-perishable food, clothing, blankets, towels, toiletries at parks last two Sundays of each month. Next to last Sun, 3:30-4pm Lafayette Sq Park, Oakland; last Sun, 3:30-4pm People's Park, Berkeley. Accepts donations of blankets, towels, and toiletries.

---

## TINKER'S WORKSHOP (24)

84 Bolivar Dr @ Addison  
(in Aquatic Park)  
Berkeley CA 94710  
644-2577

[www.tinkersworkshop.org](http://www.tinkersworkshop.org)

Call first: Mon-Thu 1-5pm or by appt

Call for acceptance, referral and/or schedule

*Repair/Restore Accepts Donations*

Accepts non-rusted bikes, beads, sewing equipment, school, craft and art supplies, machines in repairable condition, and tools – hand and power.

---

**YOUTH EMERGENCY  
ASSISTANCE HOSTEL  
(YEAH)**

25

Seasonal Shelter  
for Homeless Youth  
1744 University Ave  
@ Grant & McGee  
Berkeley CA 94703  
704-9867  
[www.yeah-berkeley.org](http://www.yeah-berkeley.org)

Call for hours

*Accepts Donations*

Sleeping bags, blankets, nalgene water bottles, disposable razors, towels and washcloths, reading materials, and art and writing supplies.

---

**HOME AND YARD – FOOD DONATIONS**

**ALAMEDA COUNTY  
COMMUNITY FOOD BANK**

7900 Edgewater Dr Ste 69  
Oakland CA 94621  
635-3663

[www.accfb.org](http://www.accfb.org)

Mon-Fri 8:30am-5pm

*Accepts Donations*

Accepts food donations from individuals, producers, brokers, manufacturers, retailers, grocers, and growers. Look for bright red food donation barrels at Berkeley Bowl, Safeway, Albertson's, Congregation Beth E l-2301 Vine St, and New Bridge Foundation-1841 Berkeley Way.

---

**BERKELEY FOOD PANTRY** 26

1600 Sacramento St @ Cedar  
Berkeley CA 94702  
525-2280

Office hours: Mon, Wed, Fri 2-4pm

Call first

*Accepts Donations*

**DAILY BREAD PROJECT**

526-3123

Leave a message

*Accepts Donations*

Nonprofit distribution network for surplus food (perishable and nonperishable) from local restaurants, grocery stores and bakeries directly to local emergency food kitchens, pantries, and shelters.

---

**EAST BAY FOOD NOT  
BOMBS** 27

c/o Long Haul Info Shop

3124 Shattuck Ave

@ Woolsey

(across from La Peña Cultural Center)

Berkeley CA 94705

644-4187

[www.bapd.org/gfotbs-1.html](http://www.bapd.org/gfotbs-1.html)

Call or attend organizing meeting first

Wed of the month 7:30pm

*Accepts Donations*

Will pick up vegetarian food donations.



## SQUARE MEALS PROJECT

649-8154

Call for pick-up

*Accepts Donations*

Roving pantry: distributes grocery bags of non-perishable food, clothing, blankets, towels, toiletries at parks last two Sundays of each month. Next to last Sun, 3:30-4pm Lafayette Sq Park, Oakland; last Sun, 3:30-4pm People's Park, Berkeley. Accepts non-perishable foods, and fruit and vegetables for distribution to the needy.

---

## HOME AND YARD – RENTALS

### HERTZ EQUIPMENT RENTAL

28

1475 Eastshore Hwy @ Jones  
Berkeley CA 94710  
(south of Gilman St Exit on 880)  
559-4444

[www.hertzequip.com](http://www.hertzequip.com)

Mon-Fri 6:30am-5:30pm;

Sat-Sun 8am-5pm

*Sell Rent*

Large and small used equipment, including lawn and garden and all types of construction tools. Also pick-up trucks, vans, and moving trucks. Well-maintained.

### U-HAUL

29

2100 San Pablo Ave  
@ Addison  
Berkeley CA 94702  
848-6523  
[www.uhaul.com](http://www.uhaul.com)

Mon, Thu, Sat 7am-7pm;

Fri 7am-8pm; Sun 7am-5pm

*Rent*

Trucks, moving supplies and equipment, and home carpet cleaners.

# Medical

Built to last – medical equipment is eminently reusable – such as wheelchairs, commodes, walkers, crutches, canes and other devices, as well as eyeglasses, hearing aids, and wigs. Unopened, non-expired medical supplies are also welcome at selected sites.

## JOHNSTON ORTHOPEDIC & MEDICAL INC. ①

2801 Shattuck Ave @ Stuart  
Berkeley CA 94705  
843-2488

Mon-Fri 8:30am-5pm;

Sat 10am-3:45pm

*Buy Sell Rent Repair/Restore Accepts Donations*

Wheelchairs, hospital beds, commodes, crutches, and other medical equipment. Accepts power wheel chairs and beds. Refers donations to other sources.

## WHEELCHAIRS OF BERKELEY ②

2911 Shattuck Ave  
@ Russell & Ashby  
Berkeley CA 94707  
549-8727

Mon-Fri 9am-5pm

*Sell Repair/Restore*

Wheelchairs, hospital beds, scooters, and other durable medical equipment.

---

## MEDICAL – DONATIONS

### AMERICAN CANCER SOCIETY

1700 Webster St  
Oakland CA 94612  
832-7012  
1-800-227-2345

Mon-Fri 9am-5pm

To donate or receive wig or headgear, call for appt.

*Accepts Donations*

Accepts quality wigs, and hats and turbans in good condition for needy cancer patients.

### CENTER FOR ELDER'S INDEPENDENCE ③

1497 Alcatraz Ave  
@ Sacramento  
Berkeley CA 94702  
433-1150 x3000  
<http://cei.elders.org>

Call first

*Accepts Donations*

Adult day health care center accepts medical equipment on an as-needed basis for client use.

## HOME CARES EQUIPMENT RECYCLERS

The ReCARES Network  
2619 Broadway Rm 307  
@ 27<sup>th</sup>

Oakland CA 94612

(north side of Broadway in First Presbyterian Church basement parking garage)

251-2273

Thu 1-4pm

*Accepts Donations*

Accepts and distributes reusable home healthcare equipment and materials plus medical supplies: crutches, canes, walkers, wheel chairs, gauze, and much more. Does not accept medications, syringes, hypodermic needles or non-working power chairs or scooters. Cannot store large items i.e., hospital beds; will match donors and recipients, recipients must pick up.

---

## HOPE FOR HEARING FOUNDATION

5855 Green Valley Cir #305  
Culver City CA 90230  
310-410-0900

[http://hope4hearing.org/  
hearing-aid-bank.htm](http://hope4hearing.org/hearing-aid-bank.htm)

Mon-Fri 9am-4pm

*Accepts Donations*

Place unwanted hearing aids in a padded envelope and mail to the address above. They will be reconditioned for someone who cannot afford a new hearing aid.

---

## OVER 60 HEALTH CENTER 4

LifeLong Medical Care  
3260 Sacramento St  
@ Alcatraz  
Berkeley CA 94702  
981-4142

[www.lifelongmedical.org](http://www.lifelongmedical.org)

Call first

*Accepts Donations*

Accepts donations of walkers, wheelchairs, etc., for reuse by members. Also provides referral services for non-members not eligible for membership.

---

## VIDA

Volunteers for Inter-American Development Assistance  
6251 Hollis Street @ 63<sup>rd</sup>  
Emeryville CA 94608  
655-8281

[www.vidausa.org](http://www.vidausa.org)

Mon-Fri 8:30am-4:30pm

*Accepts Donations*

Accepts non-expired medicine, medical supplies, and medical equipment for donation to developing countries.

---

## WEST BERKELEY LIONS CLUB 5

Lions Hearing Foundation/  
Lions in Sight  
1919 4<sup>th</sup> St @ University  
Berkeley CA 94706  
525-6987

[www.hearingfoundation.org](http://www.hearingfoundation.org)

[www.lionsinsight.org](http://www.lionsinsight.org)

*Accepts Donations*

Collects eyeglasses and hearing aids; cleans, sorts, and packages for distribution worldwide. Ask your eye and ear doctors if they participate. Drop boxes at Berkeley Optometric Group – 2414 Shattuck Ave; Urban Ore – 900 Murray St; Lenscrafters; Costco; and Kaiser Oakland. Glasses can also be packed in a box with tissue or newspaper and mailed to: Lions In Sight, 1404 Lemon St, Vallejo, CA 94590.

---

---

## MEDICAL



### WIG SOURCE

John Muir Medical Center  
Women's Health Center  
1656 No California Blvd  
Walnut Creek CA 94596  
925-947-5328

Call first: 2<sup>nd</sup> and 4<sup>th</sup> Fri

9:30am-1:30pm

*Accepts Donations*

Mail unwanted wigs to the address above.

To visit, note very limited hours.

Participates in the American Cancer Society's "Look Good and Feel Good" workshops.

## Musical Instruments

On a new note – from the funkier guitars to the finest violins, local musical instrument stores have them all. You can rent a piano or a mellow cello. Used instruments of unique quality are refurbished and tuned and available to be shipped all over the world. If you want to change your tune, bring in your old guitar to sell on consignment and walk out with the best used drums at a price you can't beat!

### A CHEERFULL NOYSE 1

1228 Solano Ave  
@ between Talbot & Evelyn  
Albany CA 94706  
524-0411

[www.acheerfullnoyse.com](http://www.acheerfullnoyse.com)

Mon-Sat 10am-6pm

*Sell Consign Repair/Restore Accepts Donations*

Specializing in classical, folk, and early music. Carries used recorders and other historically informed instruments. Will accept musical instruments and/or related items for donation to local schools or churches, etc.

### BERKELEY MUSICAL INSTRUMENTS 2

2923 Adeline St  
@ north of Ashby  
Berkeley CA 94703  
548-7538

[www.berkeleymusic.com/  
used.htm](http://www.berkeleymusic.com/used.htm)

Tue-Fri 1-6pm; Sat 11am-6pm

*Buy Sell Trade Consign Repair/Restore Accepts Donations*

Hundreds of used musical instruments – saxes, flutes, clarinets, trumpets, drums, 19<sup>th</sup> and early 20<sup>th</sup> century violins, etc.

### BLUE NOTE MUSIC 3

2556 Telegraph Ave @ Blake  
Berkeley CA 94704  
(upstairs, inside The Village)  
644-2583

Tue-Fri 11am-7pm; Sat 11am-6pm

*Buy Sell Trade Consign Rent Repair/Restore*

All musical instruments and amplifiers.

### D.C. PIANO COMPANY 4

2416 San Pablo Ave  
@ Dwight  
Berkeley CA 94702  
549-9755

[www.dcpianos.com](http://www.dcpianos.com)

Mon-Fri 11am-5:30pm; Sat 9am-5pm

*Buy Sell Rent Repair/Restore*

Large selection of used pianos. Restoration services also available.

### FIFTH STRING, THE 5

3051 Adeline St @ Essex  
Berkeley CA 94703  
548-8282

[www.5thstringberkeley.com](http://www.5thstringberkeley.com)

Mon-Sat 11am-6pm; Sun 1-5pm

*Buy Sell Trade Consign Repair/Restore*

Acoustic instruments – guitar, banjo, and mandolin plus books and lessons.

## MUSICAL INSTRUMENTS



### FORREST'S MUSIC

1849 University Ave  
Berkeley CA 94702  
845-7178  
[www.forrestsmusic.com/  
used\\_instruments.htm](http://www.forrestsmusic.com/used_instruments.htm)

Mon-Fri 9:30am-5:30pm;

Sat 9am-5pm

*Sell Consign Rent*

New and used woodwind instruments;  
double reed specialists.

6

### GORDON'S PIANO SHOP

2023 8<sup>th</sup> St  
@ University & Addison  
Berkeley CA 94710  
525-3614

Call for appt

*Buy Sell Consign Rent Repair/Restore*

Used pianos. Tuning and moving.

7

## IFSHIN VIOLINS

1633 University Ave  
@ Jefferson & Magee  
Berkeley CA 94703  
843-5466

[www.ifshinviolins.com](http://www.ifshinviolins.com)

Mon-Fri 10:30am-6pm;

Sat 10:30am-4pm

*Buy Sell Rent Repair/Restore*

Violins, violas, cellos, bassos, and bows  
plus strings and accessories.

---

## MARC SILBER MUSIC AND GUITARS

644-1958

[www.marcsilbermusic.com](http://www.marcsilbermusic.com)

Call for appt

*Buy Sell Trade Repair/Restore*

Makes, repairs, buys, sells, and trades  
stringed instruments.

---

## PIANO GALLERY

22 Acacia Ave  
Berkeley CA 94708  
527-5823

[www.finepiano.com](http://www.finepiano.com)

Call for appt

*Buy Sell Consign Repair/Restore*

Vintage pianos rebuilt to perfection by  
master craftsmen; search service,  
appraisals, and lessons.

---



8

## SAXOLOGY

1956 University Ave @ Milvia  
Berkeley CA 94702  
843-2436

Tue-Sat 12-6pm or by appt

*Buy Sell Repair/Restore*

Buys and sells instruments, reeds, and  
sheet music; repairs saxes.

---

## SUBWAY GUITARS

Fat Dog's World Famous  
1800 Cedar St @ Grant  
Berkeley CA 94703  
526-9685

[www.fatdawg.com](http://www.fatdawg.com)

Call first: Mon-Sat 12-6pm

*Buy Sell Trade Consign Rent Repair/  
Restore Accepts Donations*

Weird guitars, basses, and electronics  
including such brands as Danelectro, Vox,  
Eko, Harmony, and Kay. Vintage, custom,  
bargain, and proletarian instruments.

---

## THE STARVING MUSICIAN

2474 Shattuck Ave  
@ between Haste & Dwight  
Berkeley CA 94702  
841-2648

[www.starvingmusician.com](http://www.starvingmusician.com)

Mon-Fri 11am-7pm; Sat 11am-6pm;

Sun 12-6pm

*Buy Sell Trade Consign Rent*

The Starving Musician does long term  
band instrument rentals as well as three  
day guitar/bass and amplifier rentals.

---

10

11

12

---

## MUSICAL INSTRUMENTS – DONATIONS

### BERKELEY UNIFIED SCHOOL DISTRICT

13

Visual and Performing Arts  
1500 Derby St #509  
@ Sacramento  
Berkeley CA 94702  
644-8772

Call for appt

*Accepts Donations*

Accepts musical instruments in good  
playing condition.

### CHE GUEVARA MEMORIAL ACCORDION BAND

Richmond CA  
236-2595

Call for appt

*Accepts Donations*

Seeks used accordions for Che Guevara  
Memorial Marching and Stationary  
Accordion Band.

## Office Equipment

We save at the office! After you've shopped for a new desk (see Furnishings), you can spruce up your office with "like new" equipment. Berkeley is the home of California's oldest used computer store (founded 1984), and there is still a steady trade in reconditioned office machines along with repair of everything from new Macs to Xerox machines.

### ADVANCE TECHNOLOGY

1

2000

1029 San Pablo @ Marin  
Albany CA 94706  
526-8878

Mon-Fri 8:30am-5:30pm;

Sat 9:30am-5:30pm

*Sell Repair/Restore*

Computer system repairs and upgrades.

### BERKELEY TYPEWRITER CO. & JJ OFFICE EQUIPMENT

3

(Clark Business Machines)

1823 University Ave

@ between MLK & Grant

Berkeley CA 94703

BTC 843-2326

JJ 261-2809

Mon-Fri 9am-6pm; Sat 10am-2pm

*Sell Repair/Restore Accepts Donations*

Repairs typewriters, printers, copiers, and  
fax machines. Does not repair computers.

### AMMARI ELECTRONICS

2

1172 San Pablo Ave #103

@ Gilman

Berkeley CA 94706

527-4005

Mon-Fri 11am-6pm

*Buy Sell Trade Consign Rent Repair/*

*Restore Accepts Donations*

Computer repair/rental and pager repair.



## OFFICE EQUIPMENT



### CALIFORNIA OFFICE MACHINES

2362 San Pablo Ave @ Chaucer  
Berkeley CA 94702  
845-3780

Mon-Fri 9am-5pm

*Sell Repair/Restore*

Typewriters, fax machines, copy machines, calculators, printers, and refill ink and toner cartridges.

4

### CARTRIDGE WORLD

2161 Allston Way  
@ between Shattuck &  
Oxford

(park at public lot across the street)

Berkeley CA 94704

841-2004

[www.cartridgeworld-eastbay.com](http://www.cartridgeworld-eastbay.com)

Mon-Fri 10am-6pm; Sat 11am-5pm

*Repair/Restore*

Refills and recycles ink and laser printer cartridges.

5

**CENTRIS COMPUTERS** (6)

2101 Ashby Ave  
Berkeley CA 94705  
848-9080

Mon-Sat 10am-8pm; Sun by appt  
*Buy Sell Repair/Restore*  
Notebooks specialists, monitors, and  
printers – PCs and Macs.

---

**DJ COMPUTERS** (7)

926 San Pablo Ave  
Albany CA 94706  
527-7697

Mon-Fri 9am-6pm; Sat 12-4pm  
*Sell Trade Repair/Restore*  
Used computers, monitors, and printers.

---

**GORDON'S OFFICE  
EQUIPMENT** (8)

2242 Bancroft Way  
@ Ellsworth  
Berkeley CA 94704  
843-3510

Mon-Fri 9:30am-5:30pm  
*Sell Trade Consign Rent Repair/Restore*  
Used office equipment, typewriters, word  
processors, printers, copiers, calculators,  
fax machines, and computers. Refills ink  
and laser cartridges. Authorized dealer for  
Brother.

---

**LASER LINK** (9)

1090 Heinz St  
Berkeley CA 94710  
652-8000  
[www.laserlinkintl.com](http://www.laserlinkintl.com)

Mon-Fri 9am-5:30pm; Sat 11am-4pm  
*Buy Sell Trade Repair/Restore*  
Buy, sell, trade, and repair used laser and  
inkjet printers, computers, copiers, and  
fax machines; refill laser printer toner  
cartridges.

---

**MAC – THE MACINTOSH  
STORE** (10)

Computerware  
2010 Shattuck Ave  
Berkeley CA 94704  
644-0500  
[www.macberkeley.com](http://www.macberkeley.com)

Mon-Sat 10am-6pm  
*Buy Sell Rent Repair/Restore*  
All Macintoshes including monitors and  
peripherals.

---

**PAYLESS COMPUTER** (11)

981 San Pablo Ave @ Marin  
Albany CA 94706  
527-4905  
[www.paylesscomputer.com](http://www.paylesscomputer.com)

Tue-Fri 12-6pm; Sat 10am-5pm  
*Buy Sell Repair/Restore Accepts Donations*  
Notebook specialists; desktop and  
laptop repair/sell/service; recycles toner  
cartridges. Accepts used cell phone  
equipment, especially transformers.  
Accepts used computers for recycling.

---

**UNI TECH ELECTRONICS** (12)

2594 Telegraph Ave @ Parker  
Berkeley CA 94704  
644-2277 or 524-3883

Mon-Fri 11am-8pm;  
Sat-Sun 11am-7pm  
Also at 1615 Solano Ave: Mon-Sat  
10am-7pm  
*Buy Sell Trade Rent Repair/Restore*  
Mobile cellular phone, computers, and  
electronics: sales, service, repair, rent,  
and recycle.

---

**URBAN ORE ECOPARK** (13)  
General Store/Building  
Materials Exchange  
900 Murray St @ 7<sup>th</sup> & Ashby  
Berkeley CA 94710-2815  
(1-880 Ashby exit, right on 7<sup>th</sup> St,  
then immediately left. Parking lot is  
on right.)  
841-7283  
[http://urbanore.city  
search.com/](http://urbanore.citysearch.com/)

Mon-Sat 8:30am-7pm; Sun 10am-7pm  
Receiving closes at 5pm  
*Buy Sell Accepts Donations*  
Used furniture, electronics, cabinets,  
lighting, filing cabinets and other office  
essentials.

**USED COMPUTER STORE** (14)  
2277 Shattuck Ave  
@ Bancroft  
Berkeley CA 94704  
548-8686  
[www.usedcomputerstore.net](http://www.usedcomputerstore.net)  
Mon-Sat 10am-8pm  
*Buy Sell Repair/Restore*  
Computers, related equipment and  
accessories. Disposal with fee.

---

## OFFICE EQUIPMENT – DONATIONS

**ALAMEDA COUNTY  
COMPUTER RESOURCE  
CENTER** (15)  
1501 Eastshore Hwy  
@ Jones south of Gilman  
Berkeley CA 94710  
528-4052  
[www.accrc.org](http://www.accrc.org)

Mon-Fri 9am-5pm; Sat 12-5pm  
*Accepts Donations*  
Accepts free and recycles all electronic  
appliances that do not have food or  
clothing in them on a regular basis.  
Specializes in TVs, monitors, computers,  
and accessories. Repairs computers and  
provides to low-income families, schools,  
and non-profit organizations. Also accepts  
computer books, videos, CDs, DVDs, and  
reel-to-reel tapes. Data destruction service  
for a fee. Free collection from Berkeley  
residents by appointment. Collects large  
quantities for fee from Bay Area  
businesses. This amazing, award-winning  
community resource also invents super-  
computers from scrap, and trains  
apprentices and volunteers.

**BERKELEY EAST BAY  
HUMANE SOCIETY** (16)  
2700 9<sup>th</sup> St @ Carleton  
Berkeley CA 94710  
845-7735  
[www.berkeleyhumane.org/  
Donations/goods.html](http://www.berkeleyhumane.org/Donations/goods.html)

Tue-Sun 11am-7pm  
*Accepts Donations*  
Visit web site to learn about cell phone  
recycling program or drop off old phones  
during business hours.

---

**BOSS** (17)  
**Building Opportunities for  
Self-Sufficiency**  
2065 Kittredge St Suite E  
@ Shattuck  
Berkeley CA 94704  
649-1930  
[www.self-sufficiency.org/  
giving.html](http://www.self-sufficiency.org/giving.html) (select *Wish List* or  
*Community Donations*)

Mon-Fri 8am-4pm  
*Accepts Donations*  
Recent working computers, both PC  
and Mac, and copy paper.

**CINGULAR WIRELESS** ⑮  
2180 Shattuck Ave @ Center  
Berkeley CA 94704  
486-0668  
www.cingular.com

Mon-Fri 9am-8pm; Sat 9am-6pm; Sun  
11-5pm

*Accepts Donations*

Accepts cellular telephones for recycling. Benefits "Keep America Beautiful."

---

**HOUSEHOLD  
ELECTRONICS PICK-UP  
SERVICE – ACCRC**  
528-4755

*Free to Berkeley Residents*

If you reside in Berkeley, we will come and pick up your household electronics at no charge. Call our Electronics Pick-up Line and leave us a voice message.

**OFFICE DEPOT** ⑰  
1025 Gilman St @ San Pablo  
Berkeley CA 94710  
525-0176  
www.officedepot00926.com

Mon-Fri 8am-9pm; Sat 9am-8pm;  
Sun 10am-6pm

*Sell Accepts Donations*

Remanufactured cartridges. Accepts empty ink tanks and toner cartridges. For cartridges, sometimes offers ream of recycled paper or \$3 credit toward next cartridge purchase (except for HP). Also recycles cell phone batteries.

## Outdoor Equipment

Over hill, over dale, outdoor goods for rent or sale. Whether the mountains or the ocean are places you seek adventure, a tour of the outdoor equipment stores will put you in the mood to explore and enjoy California at bargain prices. You can rent a fishing rod and reel, a mountain bike, or buy a used tent and go camping. Snowboards, skis, sleeping bags, skates, and even sails and surfboards are available to be bought and sold.

**BERKELEY BAIT &  
TACKLE SHOP** ①  
2221 San Pablo Ave  
@ Allston & Bancroft  
Berkeley CA 94702  
849-0432

Daily 6am-6pm

*Buy Sell Rent Repair/Restore*

Used fishing rods and reels.

**BERKELEY BOARDSPORTS** ②  
1601 University Ave  
Berkeley CA 94703  
527-7873 or 843-9283  
www.boardsports.com

Mon-Fri 11am-7pm;

Sat-Sun 11am-5pm

*Sell Rent Repair/Restore*

Used snowboards, windsurfing boards, and related equipment.

**CAL DIVE & TRAVEL** (3)  
1750 6<sup>th</sup> St @ Delaware  
(in the small mall)  
Berkeley CA 94710  
524-3248  
Tue 12-6pm; Sat 10am-2pm  
*Sell Rent Repair/Restore*  
Repairs, rents, and sells scuba diving  
equipment.

---

**CALIFORNIA SKI  
COMPANY** (4)  
843 Gilman St  
@ between 6<sup>th</sup> & 7<sup>th</sup>  
Berkeley CA 94710  
527-6411  
[www.calskico.com/  
rentals.html](http://www.calskico.com/rentals.html)  
Closed May 20-Sept 1  
Mon-Wed 10am-7pm;  
Thu-Fri 10am-8pm; Sat 10am-6pm;  
Sun 11am-6pm  
*Sell Rent*  
Used high-performance skis.

---

**LUCKY BAIT SHOP** (5)  
2617 San Pablo Ave  
Berkeley CA 94702  
704-8990  
Daily 7am-4pm (varies with weather)  
*Sell*  
Used rods and reels.

---

**OUTDOOR SEWING  
AND FABRIC** (6)  
Narain's Outdoor Garment  
Specialist  
1275 San Pablo Ave  
@ Gilman  
Berkeley CA 94702  
527-2509  
Mon-Fri 9:30am-6pm; Sat 10am-5pm  
*Sell Repair/Restore*  
Repairs tents, sleeping bags, comforters,  
jackets, and backpacks. Also sells fabric  
for home repairs.

---

**PLAZA TENNIS & SPORTS** (7)  
1161 Solano Ave @ Stannage  
Albany CA 94706  
525-4154  
Mon, Fri 10am-8pm;  
Tue-Thu 10am-6pm;  
Sat 10am-5:30pm; Sun 12-4:30pm  
*Buy Sell*  
Used tennis racquets.

---

**REI / RECREATIONAL  
EQUIPMENT INC.** (8)  
Rental Department  
1338 San Pablo Ave  
@ Gilman  
Berkeley CA 94702  
527-4140  
[www.rei.com](http://www.rei.com)  
Mon-Fri 10am-9pm; Sat 10am-8pm;  
Sun 10am-7pm  
*Rent*  
Rent backpacking & camping equipment,  
including backpacks, tents, sleeping bags,  
stoves, mountaineering equipment, bear  
canisters, and snowshoes. Also, monthly  
used gear and clothing sale. Contact REI  
or check [www.rei.com](http://www.rei.com) for dates.

---

**SPORTS 4 KIDS SWAP  
SHOP** (9)  
2095 Rose St  
@ between Shattuck & Henry  
Berkeley CA 94709  
868-1591  
[www.sports4kids.org](http://www.sports4kids.org)  
Wed-Fri 10am-6pm; Sat 10am-5pm  
*Sell Accepts Donations*  
Gently-used and new sports equipment.  
Donated equipment is re-sold to the  
public or redistributed to schools and  
non-profit agencies as appropriate.

---



---

## OUTDOOR EQUIPMENT – BIKES

### KARIM CYCLE

11

2800 Telegraph Ave @ Stuart  
Berkeley CA 94705  
841-2181  
[www.teamkarim.com/bikes/  
used.html](http://www.teamkarim.com/bikes/used.html)

Mon-Sat 11am-6pm

*Buy Sell Trade Consign Rent Repair/  
Restore Accepts Donations*

Largest selection of used bikes in this area.  
Also deal in used inline skates, roller  
skates, and snow boards.

---

### MISSING LINK ANNEX

12

1980 Shattuck Ave @  
University  
Berkeley CA 94704  
843-7471  
[www.missinglink.org](http://www.missinglink.org)

Mon-Sat 10am-6pm; Sun 11am-6pm

*Sell Trade Repair/Restore*

Sells used (and new) bikes. Also repairs  
bikes, and offers bike repair classes and  
loaner tools.

### RECYCLES BICYCLE SHOP

13

3120 Sacramento  
@ 67<sup>th</sup> between Ashby &  
Alcatraz  
Berkeley CA 94702  
666-1300

[www.recyclesbicycles.com](http://www.recyclesbicycles.com)

Tue-Fri 12-6pm; Sat 11am-5pm;

Sun-call first

*Buy Sell Trade*

Used bicycles, parts, and accessories;  
some outdoor gear. Call for acceptance.

# Packaging

Empty boxes and packing foam can often find a second home. Packing peanuts aren't for eating but their use is worth repeating. When packing peanuts go astray and float around your home, recapture them in plastic bags, label them with proper tags, and take them off for prompt reuse, by packers who will put to use, this funny looking foam. Bubble wrap is OK too. Most of these stores also sell and accept packing peanuts made from corn starch – or you can put them in your garden.

## HANDLE WITH CARE PACKAGING STORE

1

1625 University Ave  
@ Jefferson  
Berkeley CA 94704  
540-6311  
[www.hwcpackagingstore.com/  
store514/front.htm](http://www.hwcpackagingstore.com/store514/front.htm)

Mon-Fri 9am-5pm; Sat 10am-4pm

*Sell Accepts Donations*

Moving and packaging supplies: bubble wrap, cardboard moving boxes, and packing peanuts—must be dry and clean.

---

## POSTAL ANNEX

2

2524 Channing Way #B  
@ Dana (in Sather Gate Mall)  
Berkeley CA 94704  
548-4680

Call first: Mon-Fri 9am-6pm;

Sat 10am-4pm

*Accepts Donations*

Accepts packaging materials for reuse.

## UC STORAGE

3

2721 Shattuck Ave @ Ward  
Berkeley CA 94705  
883-2000

Mon-Sat 9am-6pm; Sun 10am-4pm

*Sell Rent Accepts Donations*

Used packing peanuts and packaging materials. Occasionally has used moving boxes.

---

## UPS STORE, THE

4

2342 Shattuck Ave @ Durant  
Berkeley CA 94702  
843-8288

[www.upsstore.com](http://www.upsstore.com)

Call first: Mon-Fri 8:30am-6:30pm;

Sat 9am-5pm

Also: 2625 Alcatraz @ College:

547-6384; and 1563 Solano Ave

@ Peralta: 528-6919

*Accepts Donations*

PS pellets, styrofoam sheets, usable bubble wrap, toner cartridges, and cell phones.



---

## PACKAGING



**YOU SEND ME**  
1442A Walnut St  
@ Rose & Vine  
Berkeley CA 94709  
540-0671

Mon-Fri 9am-6pm; Sat 9am-5pm  
*Accepts Donations*  
Accepts and provides used packaging  
peanuts tied in plastic bags.

5

---

## PACKAGING – RESOURCE

### LOOSE FILL PACKAGING COUNCIL

[www.loosefillpackaging.com](http://www.loosefillpackaging.com)

Lists locations that accept plastic  
peanuts for reuse.

## Recordings

Oldies but goodies! Since the 80s, a new world of reusables has opened up in the field of recordings, including CDs, LPs, tapes, videos, DVDs, software and even laser discs. “Previously viewed” films and CDs are great reusable items for sale in many of these neighborhood-oriented stores. Check out the listings below and also look in the Yellow Pages under Video Stores.

### ALBANY LIBRARY

1

Friends of the Albany Library  
1247 Marin Ave  
@ Masonic & Evelyn  
Albany CA 94706  
526-3720  
[www.aclibrary.org](http://www.aclibrary.org)

Donations accepted during library

hours: Mon 12-6pm;

Tue-Wed 12-8pm; Thu 10am-6pm;

Fri closed; Sat 10am-5pm

*Sell Accepts Donations*

Books on tape, CDs, and videos.

Ongoing sale shelf and large book sales several times per year.

### AMOEBA MUSIC

2

2455 Telegraph Ave @ Haste  
Berkeley CA 94704  
549-1125  
[www.amoebamusic.com](http://www.amoebamusic.com)

Mon-Sat 10:30am-10pm;

Sun 11am-9pm

*Buy Sell Trade*

Used LPs, CDs, tapes, video tapes, laser discs, and posters.

### EAST BAY MEDIA CENTER

3

1939 Addison St @ Milvia  
Berkeley CA 94704  
843-3699

[www.eastbaymediacenter.com/](http://www.eastbaymediacenter.com/)

Mon-Fri 10am-5:30pm; Sat 10am-2pm

*Sell Rent Repair/Restore*

*Accepts Donations*

Video cameras, lights, mics, data/video projectors and more – DVCAM, miniDV, VHS, S-VHS, film to tape/DVD, and DVD VHS duplication.

### HALF PRICE BOOKS

4

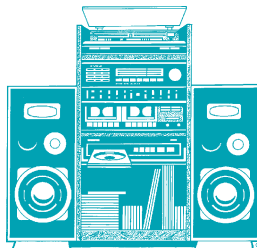
2036 Shattuck Ave  
@ Addison  
Berkeley CA 94704  
526-6080

[www.halfpricebooks.com/](http://www.halfpricebooks.com/)

Daily 9am-10pm

*Buy Sell*

Audio tapes, records and CDs, videos, DVDs, and software.



## RECORDINGS



### MUSICAL OFFERING

5

Classical Record Shop & Café

2430 Bancroft Way

@ Telegraph

Berkeley CA 94704

849-0211

[www.musicaloffering.com](http://www.musicaloffering.com)

Mon-Sat 10am-8pm;

Sun 11:30am-5:30pm

Café daily 9am-5pm

*Buy Sell Trade*

Rare and unusual CD's, some out of print.

### PEGASUS BOOKS

6

DOWNTOWN

2349 Shattuck Ave @ Durant

Berkeley CA 94704

649-1320

[www.pegasusbookstore.com](http://www.pegasusbookstore.com)

Mon-Thu 9am-10pm; Fri-Sat 9am-

10:45pm; Sun 10am-10pm

*Buy Sell Trade*

CDs bought for store credit or trade.

## PEGASUS FINE BOOKS ⑦

1855 Solano Ave  
@ The Alameda  
Berkeley CA 94707  
525-6888

[www.pegasusbookstore.com](http://www.pegasusbookstore.com)

Mon-Thu 9am-10pm;

Fri-Sat 9am-10:45pm;

Sun 10am-10pm

*Buy Sell Trade*

CDs bought for store credit or trade.

## RASPUTIN'S RECORDS ⑧

2401 Telegraph Ave  
@ Channing  
Berkeley CA 94704  
848-9004

[www.rasputinmusic.com/  
sellingused.html](http://www.rasputinmusic.com/sellingused.html)

Mon-Sat 10:30am-10pm;

Sun 11am-9pm

*Buy Sell Trade Consign*

Buys and sells used CDs, DVDs, LPs, videos, laserdiscs, and tapes in very good to excellent condition. Rare records worth significantly more. All genres of music.

## Salvage

Everything but the kitchen sink. In fact, kitchen sinks are rarely reusable except from remodels – they really do wear out, but bricks, windows, doors, lumber, marble, stained glass, tile, hardware, pipe, and functional household basics (toilets and bathtubs) are found in salvage yards. Auctions, business closings, rights to demolished buildings, donations, scavenging from discards, and one-on-one purchases are the sources for all of these wonderful resource-saving goods. Some salvage businesses sell things “as is” while others fix them up.

## OMEGA SALVAGE ①

2400 & 2407 San Pablo Ave  
@ Channing  
Berkeley CA 94702  
843-7368

[www.ohmegasalvage.com](http://www.ohmegasalvage.com)

Mon-Sat 9am-5pm; Sun 12-5pm

*Buy Sell Trade Consign Rent*

*Accepts Donations*

Antique building materials and architectural details, antique & reproduction plumbing, architectural salvage, and vintage and reproduction hardware. Showroom. Rental service for local customers only.

## OMEGA TOO ②

2204 San Pablo Ave  
Berkeley CA 94702  
843-3636

[www.omegatoo.com](http://www.omegatoo.com)

Mon-Sat 10am-6pm; Sun 12-5pm

*Buy Sell Rent Repair/Restore*

Repairs and restores antique lighting. Wide variety of replacement glass and parts in stock.

**SINK FACTORY, THE**  
2140 San Pablo Ave  
@ Cowper  
Berkeley CA 94702  
540-8193  
[www.sinkfactory.com](http://www.sinkfactory.com)

3

**Tues-Sat 9am-6pm**  
*Buy Sell Consign Rent Repair/Restore*  
Reusable pre-40s quality bathroom fixtures, including sinks, tubs, and toilets.

**URBAN ORE ECOPARK**  
**General Store/Building Materials Exchange**  
900 Murray St @ 7<sup>th</sup> at Ashby  
(I-880 Ashby exit, right on 7<sup>th</sup> St, then immediately left. Parking lot is on right.)  
Berkeley CA 94710  
841-7283  
<http://urbanore.citysearch.com/>

4

**Mon-Sat 8:30am-7pm;**  
**Sun 10am-7pm**  
**Receiving closes at 5pm**  
*Buy Sell Accepts Donations*  
Used building materials including doors, windows, lumber, bricks, sinks, tubs, tile, hardware, and cabinets. Plus household and office furniture, housewares, clothing, books, music, and collectibles. Large volume of material in most ranges of quality.

---

## SALVAGE – DONATIONS

**CITY OF BERKELEY**  
Adventure Playground  
160 University Ave  
@ south side of the Marina  
Berkeley CA 94710  
981-6720  
[www.ci.berkeley.ca.us/marina/marinaexp/adventplgd.html](http://www.ci.berkeley.ca.us/marina/marinaexp/adventplgd.html)

5

**Mon-Fri 9am-5pm;**  
**Sat-Sun 11am-5pm;**  
**closed when raining**  
*Accepts Donations*  
Unique playground where kids can build and paint with equipment made from salvaged materials. Needs ongoing supply of safe, clean building materials and other creativity inspiring items. No treated wood, splintery material, glass, sharp metal, or paint. Please call before delivering.

**EAST BAY HABITAT FOR HUMANITY RE-STORE**  
9235 San Leandro St @ 98<sup>th</sup>  
Oakland CA 95612  
777-1447  
[www.eastbayhabitat.org](http://www.eastbayhabitat.org)

**Tue-Sat 9am-5pm**  
*Accepts Donations*  
Builds quality housing and helps low-income families achieve home ownership. Call first to confirm what is needed. Limited pick-up service. Accepts building materials and sells them back to the community to help finance the high cost of building houses. Also accepts energy-efficient building materials, siding, sinks, and appliances (refrigerators must be new and in boxes). Needs vary with current projects.

---

## SALVAGE



### REBUILDING TOGETHER ALBANY- BERKELEY-EMERYVILLE

(Formerly Christmas in April)

3318 Adeline St @ Alcatraz

Berkeley CA 94703

644-8979

[www.rebuildingtogetherabe.org](http://www.rebuildingtogetherabe.org)

Hours vary – call first

*Repair/Restore Accepts Donations*

Volunteer program to provide safety repairs and home modifications for low-income seniors and people with disabilities. Deadline for October renovations is July 1, deadline for April

6

renovations is October 1. Energy-efficient building materials in good, clean working condition, such as lumber, windows, insulation, bathroom fixtures, ladders, carpentry and yard tools, light fixtures, and cabinets.

# Thrift Shops

The price is right! Thrift stores have almost everything at low prices and as-is. Clothing and housewares are usually the most plentiful items, but there are also books, suitcases, toys, TVs, plush chairs, greeting cards, umbrellas, and ukuleles. These are great places to donate your garage sale leftovers; some thrift stores support very worthwhile charitable community services.

## THRIFT SHOPS



**ALBANY SENIOR CENTER** ①  
Spring White Elephant Sale  
846 Masonic Ave  
Albany CA 94706  
524-9122

Call for drop-off hours

*Sell Accepts Donations*

Useable household goods, jewelry, knick-knacks, toys, books, etc. **NO CLOTHING.** Please call regarding furniture or large items.

---

**BERKELEY CLINIC  
AUXILIARY TURNABOUT  
SHOP**

10052 San Pablo Ave  
@ Central  
El Cerrito CA 94530  
525-7844

Mon, Tue, Fri, Sat 11am-3pm

*Sell Accepts Donations*

Supports various service agencies, camps and elderly Tele-Care, and provides orthodontic treatment for needy children recommended by school nurses, local orthodontists, etc. Accepts clothing, household goods, toys, small sports equipment, small furniture, bedding, and linen.

---

**BERKELEY FLEA MARKET** ②  
Community Services United  
1937 Ashby Ave  
(Ashby BART Station parking lot)  
Berkeley CA 94703  
644-0744  
[www.berkeleyfleamarket.com](http://www.berkeleyfleamarket.com)

Sat-Sun 7am-7pm year round, weather permitting

*Sell*

Stall fee \$23 per day; permit required from Community Services United to sell food; sale of toy guns or other guns not allowed. Call to confirm office hours and reservation times. All proceeds support local organizations.

---

**CELLAR THRIFT SHOP** ③  
2345 Channing Way @ Dana  
(enter at corner of Dana &  
Channing)  
Berkeley CA 94704  
644-3262  
[www.fccb.org](http://www.fccb.org)

Wed 10am-4pm; Sat 10am-2pm;

Sun before/after 10am service

*Sell Accepts Donations*

Housewares, towels, linens, books, games, gifts, musical instruments, CDs, and DVDs. Benefits various charities and First Congregational Church of Berkeley outreach program.

---

**EAST BAY DEPOT FOR  
CREATIVE REUSE**  
4695 Telegraph Ave @ 47<sup>th</sup>  
Oakland CA 94609  
547-6470  
[www.creativereuse.org](http://www.creativereuse.org).

Daily 11am-6pm

Donations until 5pm

Call 547-6535 to request pick-up

*Sell Accepts Donations*

Accepts, collects, and redistributes material to community at low cost – art materials, office supplies, paper products, fabric, books, small furniture, frames, garden artifacts, and odds and ends. Will not accept computers, electronics, clothing, or paint. Call to assure acceptance.

---



## GOODWILL STORE, THE 4

2058 University Ave  
@ Shattuck  
Berkeley CA 94704  
649-1287, 534-6666

[www.eastbaygoodwill.org](http://www.eastbaygoodwill.org)

Mon-Sat 10am-8pm; Sun 11am-6pm

Donate Mon-Sat 11am-5pm;

Sun 12-4pm

Call 534-6666 for large or bulky  
furniture pick-up.

*Sell Accepts Donations*

Clothing, housewares, small appliances,  
furniture, books, and toys. Funds raised  
from donations and sales support paid  
on-the-job skills training and free job  
placement services for people with  
vocational disabilities.

---

## NORTH BERKELEY SENIOR CENTER GIFT SHOP 5

1901 Hearst Ave @ MLKing  
Berkeley CA 94709  
981-5190

Tue-Fri 10am-2pm

*Sell Consign Accepts Donations*

Consignment and donated items  
including clothing, housewares, and  
jewelry.

---

## OUT OF THE CLOSET 6

1600 University Ave  
@ California  
Berkeley CA 94703  
841-2088

[www.aidshealth.org](http://www.aidshealth.org) (then click  
*Programs and Out of the Closet*)

Mon-Sat 10am-7pm; Sun 10am-3pm

Receiving: Mon-Sat 10:30am-5pm;

Sun 10:30am-3pm

Pick-ups: 800-558-8220

*Sell Accepts Donations*

Clothing, household items, furniture,  
books, kitchenware, appliances, etc. Can-  
not take mattresses, waterbeds, or toys.  
Benefits AIDS Healthcare Foundation.

## SALVATION ARMY THRIFT STORE 7

1824 University Ave @ MLK  
Berkeley CA 94706  
704-8199

Mon-Sat 9:30am-6pm

*Sell Accepts Donations*

Furniture, housewares, clothing, books,  
suitcases, toys, working TVs, etc.  
Program benefits drug and alcohol  
rehabilitation program, including work  
training.

---

## URBAN ORE ECOPARK 8

General Store/Building  
Materials Exchange

900 Murray St @ 7<sup>th</sup> at Ashby  
(I-880 Ashby exit, right on 7<sup>th</sup> St,  
then immediately left. Parking lot is  
on right.)

Berkeley CA 94710-2815  
841-7283

<http://urbanore.citysearch.com/>

Mon-Sat 8:30am-7pm;

Sun 10am-7pm

Receiving closes at 5pm

*Buy Sell Accepts Donations*

Used home and office furniture, elec-  
tronics, cabinets, lighting, hardware,  
housewares, books, antiques, records,  
and building materials.

---

## WEST BERKELEY SENIOR CENTER THRIFT 9

1900 6<sup>th</sup> St  
@ between Hearst &  
University  
Berkeley CA 94710  
981-5180

Tue, Thu 10am-2pm

Donations accepted Mon-Fri 8am-5pm

*Sell Accepts Donations*

Clothing, housewares, and general thrift  
shop items.

## Toys

Play reuse ball! Toys are very reusable, resalable, and collectible! The place to start is Solano Avenue, working down to and around San Pablo Avenue. Repair your favorite bear or dress your doll at these favorite shops.

### BRASS HORSE, THE

1

634 San Pablo Ave  
Albany CA 94706  
526-7522

[www.thebrasshorse.com](http://www.thebrasshorse.com)

Wed-Sat 11am-5:30pm and by appt  
*Buy Sell Trade Consign Repair/Restore*  
All of your favorite dolls from yesteryear plus doll clothes and occasionally other toys. Limited repairs.

### TOY GO ROUND

3

1361 Solano Ave @ Ramona  
Albany CA 94706  
527-1363

[www.etoysground.com](http://www.etoysground.com)

Mon-Sat 10am-6pm; Sun 11am-6pm  
Consignment Mon-Sat 10am-12pm  
*Buy Sell Consign*  
Large selection of toys, books games, children's equipment, and some collectibles.

### KIT AND CABOODLE

2

425 San Pablo Ave  
@ Brighton  
Albany CA 94706  
524-9942

[www.kitandcaboodle.org](http://www.kitandcaboodle.org)

Mon-Sat 10am-6pm  
*Sell Consign*  
Model cars and model airplanes on consignment.

## TOYS – DONATIONS

### BANANAS

Childcare Resources Center  
5232 Claremont Ave  
@ 51<sup>st</sup> & Telegraph  
Oakland CA 94618  
658-7353

[www.bananasinc.org](http://www.bananasinc.org)

Mon, Wed, Thu 9:30am-4:30pm; Tues 9:30am-8pm; Fri 9:30am-1pm  
*Rent Accepts Donations*  
Accepts donations of toys, children's clothing, infant formula, diapers, baby equipment and baby food, and maternity clothes.

### CITY OF BERKELEY

4

Public Health Clinic  
830 University Ave @ 6<sup>th</sup>  
Berkeley CA 94710  
981-5350

[www.ci.berkeley.ca.us/publichealth/publichealthclinic/phc.html](http://www.ci.berkeley.ca.us/publichealth/publichealthclinic/phc.html)

Mon-Fri 8am-12pm and 1-5pm  
*Accepts Donations*  
Needs children's books, games, and videos for waiting rooms.

---

## TOYS



### MARINES TOY FOR TOTS FOUNDATION

814-1613

Contact Sgt. Alexius L. Ofanes

[www.toysfortots.org](http://www.toysfortots.org)

Nov 20-Dec 15

*Accepts Donations*

Working in cooperation with all Berkeley and Albany fire houses, the Marine Corps Reserves accepts unwrapped new toys from individuals and retail stores which are distributed as gifts to East Bay children.

## Resources

Can't find the information you need? Here are the environmental web sites that will be able to answer your questions and/or refer you to appropriate sources of information.

### ALAMEDA COUNTY

Household Hazardous Waste  
Hotline

1-800-606-6606

[www.household-hazwaste.org](http://www.household-hazwaste.org)

Call for schedule

*Accepts Donations*

Free to Alameda County residents. Businesses can participate for a small fee, with prior arrangement. Information and drop-off for household toxics, batteries, and paint. Maximum 15 gallons or 125 pounds per trip. Three rotating locations – Oakland, Hayward, and Livermore. Swap Shed for common hardware store products. Schedules varies/call for details.

### BAY AREA BUILD IT GREEN/GREEN RESOURCE CENTER

1

Ask An Expert Hotline

AccessGreen Directory

Training & green home tours

1434 University Ave @ Milvia

Berkeley CA 94704

845-0472

[www.BuildItGreen.org](http://www.BuildItGreen.org)

Call for appt

*Education*

Information and advice about healthy energy and resource-efficient building practices and products. Education and training for building professionals and consumers. Non-profit membership organization promoting green building throughout California.

### BERKELEY ECOLOGY CENTER

2

Environmental Resource  
Center and Store

2530 San Pablo Ave @ Blake

Berkeley CA 94702

548-2220 x233

[www.ecologycenter.org](http://www.ecologycenter.org)

Tue-Sat 11am-6pm

*Sell Accepts Donations*

Berkeley's oldest environmental membership organization, the Ecology Center pioneered curbside recycling in California more than 30 years ago. Runs the Berkeley Farmers Market and publishes Terrain Magazine. The Resource Center provides non-commercial information about household products, ecologically sensitive methods of living, and large toxic threats to society and alternatives to those threats. The Center also sells a wide variety of books, green house and garden products, plus meeting space is available for community use.

### BERKELEY FARMERS' MARKETS

2

Operated by the Berkeley Ecology  
Center

2530 San Pablo Ave

Berkeley CA 94702

548-3333

[www.ecologycenter.org](http://www.ecologycenter.org)

Tue 2-6pm Derby St & MLKing

Thu 3-7pm (all organic) Shattuck & Rose

Sat 10am-3pm Center & MLKing

## RESOURCES



### BIKESTATION BERKELEY

3

c/o Bicycle Friendly Berkeley  
Coalition

2160 Shattuck Ave @ Allston  
Berkeley CA 94702

548-7433

[www.bikestation.org/berkeley](http://www.bikestation.org/berkeley)

Mon-Fri 7am-9pm (with breaks at  
9:30 and 3:45)

Rent

In Downtown Berkeley BART on the  
subterranean concourse level.

### CITY CARSHARE

[www.citycarshare.org](http://www.citycarshare.org)

City CarShare is a Bay Area non-profit on a mission to provide convenient, affordable, access to cars to reduce the need for individual car ownership. Reserve an energy efficient mini or truck when you need it, at locations throughout the East Bay and San Francisco. Join City CarShare on their web site.

---

## CITY OF ALBANY

### COMMUNITY CENTER

1249 Marin Ave, Albany CA 94706  
524-9283

4

---

### COMMUNITY DEVELOPMENT & ENVIRONMENTAL SERVICES DEPT

1000 San Pablo Ave, Albany CA 94706  
528-5766

[www.albanyca.org](http://www.albanyca.org)

Mon-Fri 8am-5pm

5

---

### FIRE DEPARTMENT DISASTER PREPAREDNESS HOTLINE

528-5771  
[www.albanyca.org/dept/fire.html](http://www.albanyca.org/dept/fire.html)

---

### GENERAL CITY INFORMATION

1000 San Pablo Ave, Albany CA 94706  
528-5710

[www.albanyca.org](http://www.albanyca.org)

Mon-Fri 8am-5pm

5

---

### TRASH AND RECYCLING SERVICES

613-8710 (Waste Management of Alameda County)  
[www.albanyca.org/dept/pdf/ERresidentialgenbro.pdf](http://www.albanyca.org/dept/pdf/ERresidentialgenbro.pdf)  
[www.albanyca.org/dept/pdf/ERcommercialbro.pdf](http://www.albanyca.org/dept/pdf/ERcommercialbro.pdf)

---

### CITY OF ALBANY LIBRARY

1247 Marin Ave (@ Masonic & Evelyn), Albany CA 94706  
526-3720

[www.aclibrary.org](http://www.aclibrary.org)

Mon 12-6pm; Tue-Wed 12-8pm; Thu 10am-6pm; Fri closed; Sat 10am-5pm

4

---

## CITY OF BERKELEY

### GENERAL CITY INFORMATION

2180 Milvia St (@ Center & Allston), Berkeley CA 94704

981-CITY (2489)

[www.ci.berkeley.ca.us](http://www.ci.berkeley.ca.us)

Mon-Fri 8am-5pm

6

---

### OFFICE OF ENERGY AND SUSTAINABLE DEVELOPMENT

2180 Milvia St 2nd Fl (@ Center & Allston), Berkeley CA 94704

981-5435

[www.CityofBerkeley.info/Sustainable](http://www.CityofBerkeley.info/Sustainable)

Mon-Fri 8am-5pm

7

---

### REFUSE DISPOSAL, COMMERCIAL RECYCLING & USED MOTOR OIL DROP-OFF

1201 2nd St (@ Gilman), Berkeley CA 94710

981-7270

[ci.berkeley.ca.us/pw/swm.html](http://ci.berkeley.ca.us/pw/swm.html)

Office Mon-Fri 8am-5pm

Transfer Station Mon-Sat 8am-4:30pm

Closed New Years Day, July 4, Thanksgiving, and Christmas

7

---

### RESIDENTIAL CURBSIDE RECYCLING – ECOLOGY CENTER

527-5555

[www.ecologycenter.org](http://www.ecologycenter.org)

Mon-Fri 7am-3pm

---

### CITY OF BERKELEY LIBRARY SYSTEM

981-6100

[www.berkeleypubliclibrary.org](http://www.berkeleypubliclibrary.org)

Berkeley Information Network (BIN) – Information on over 3,500 local agencies, clubs, organizations, and community resources. Includes list of organizations that accept donated materials and entire library catalog.

**Central Library** 2090 Kittredge @ Shattuck 981-6100

Mon 12-8pm; Tue 10am-8pm; Wed-Sat 10am-6pm; Sun 1-5pm

**Claremont Branch** 2940 Benvenue @ Ashby 981-6280

**North Branch** 1170 The Alameda @ Hopkins 981-6250

**South Branch** 1901 Russell St @ MLKing 981-6260

**West Branch** 1125 University @ San Pablo 981-6270

Hours for all Branch Libraries: Mon-Tue 10am-6pm; Wed-Thu 12-8pm; Fri-Sat 1-5pm

**Tool Lending** 1901 Russell St @ MLKing 981-6101

Wed-Thu 12-7:30pm; Fri 1-5:30pm; Tue & Sat 10am-5:30pm

Lends tools to Berkeley residents and property owners with ID. Accepts donations of good quality tools in good condition. Does not have gas powered or compressed air tools, or automotive repair tools.

---

## CITY OF BERKELEY

### COMMUNITY CONSERVATION CENTERS

8

Berkeley's Multi-Material Recycling Centers

669 Gilman St @ 2<sup>nd</sup>, Berkeley CA 94710

524-0113

[www.berkeleyrecycling.org](http://www.berkeleyrecycling.org)

Donations accepted daily 8:30am-4pm

Buyback hours Tue-Sun 9am-4pm

*Accepts Donations*

Accepts donations of books, cell phones, pagers, and PDAs, plus mixed paper, newspaper, office paper, cardboard, aluminum cans, glass containers and plastic bottles, scrap metal, and appliances (except refrigerators). Accepts fluorescent light bulbs, household batteries, and mercury switches and thermostats – see attendant.

---

### TINKER'S WORKSHOP

9

84 Bolivar Dr @ Addison in Aquatic Park

Berkeley CA 94710

644-2577

[www.tinkersworkshop.org](http://www.tinkersworkshop.org)

Call first: Mon-Thu 1-5pm or by appt

Call for acceptance, referral and/or schedule

*Repair/Restore Accepts Donations*

A not-for-profit community group that educates people in reuse, repair, and inventive techniques. Holds classes such as sewing, wood shop, and bike repair. Also helps with sound for community educational events.



---

## BAY AREA RESOURCES

### CRAIG'S LIST

[www.craigslist.org](http://www.craigslist.org)

*Buy Sell Trade Consign Rent Repair/Restore Accepts Donations*

SF Bay area free classified listings for jobs, apartments, personals, items for sale, and services offered.

---

### EAST BAY DEPOT FOR CREATIVE REUSE

4695 Telegraph Ave @ 47<sup>th</sup>, Oakland CA 94609

547-6470

[www.creativereuse.org](http://www.creativereuse.org).

Daily 11am-6pm

Donations until 5pm

Call 547-6535 to request pick-up.

*Sell Accepts Donations*

Accepts, collects, and redistributes material to community at low cost – art materials, office supplies, paper products, fabric, books, small furniture, frames, garden artifacts, and odds and ends. Will not accept computers, electronics, clothing or paint.

Call to assure acceptance.

---

### FREecycle – EAST BAY

<http://groups.yahoo.com/group/FreecycleEastSFBayArea/>

Reduces waste by connecting people who are throwing away items with others seeking the same items.

---

## REGIONAL & STATE OF CALIFORNIA RESOURCES

### CALMAX (CALIFORNIA MATERIALS EXCHANGE)

877-520-9703

[www.calmax.org](http://www.calmax.org)

A program of the California Integrated Waste Management Board to match excess materials with people who can use them. Lists fifteen categories of available and wanted items such as clean dirt, packing and building materials, theater supplies, and one-of-a-kind objects. Generally low-cost or free. Links to regional sites. Great stuff.

---

### OAKLAND/BERKELEY RECYCLING MARKET DEVELOPMENT ZONE (RMDZ)

238-4973

[www.ciwmb.ca.gov/RMDZ](http://www.ciwmb.ca.gov/RMDZ)

The Recycling Market Development Zone program combines recycling with economic development to fuel new businesses, expand existing ones, create jobs, and divert waste from landfills. This program provides attractive loans, technical assistance, and free product marketing to businesses that use materials from the waste stream to manufacture their products and are located in the zone.

---

### STOPWASTE.ORG (ALAMEDA COUNTY)

Funded by a surcharge on every ton of waste landfilled, StopWaste.Org's mission is to provide the most environmentally sound waste management programs for the people of Alameda County. One-stop shopping for information and advice about recycled products, and recycling or disposing of hazardous waste. Provides grants for waste reduction and recycling projects, and helps businesses reduce waste and become Green-certified.

#### RECYCLING HOTLINE

877-STOPWASTE (877-786-7927)

[www.stopwaste.org](http://www.stopwaste.org)

Mon-Fri 9am-4pm

#### ROTLINE (Compost Information Hotline)

444-SOIL (7645)

[www.stopwaste.org/fscompost.html](http://www.stopwaste.org/fscompost.html)

Mon-Fri 9am-4pm

Call for compost advice, free hands-on workshops, discount compost bins, and much more.

## Junk Mail Reduction

Save time and resources! These are the major bulk mailing houses. Contact each of them and ask to be permanently removed from their mailing lists. One is not enough; call them all. If junk mail starts flowing in; call them back ASAP.

For additional information visit [www.StopJunkMail.org](http://www.StopJunkMail.org) or call 877-STOPWASTE (786-7927).

### ADVO SYSTEMS

Attn: Customer Assistance  
PO Box 249, Windsor CT 06095  
Toll free: 888-241-6760  
[www.advo.com/consumersupport.html](http://www.advo.com/consumersupport.html)

For more information on reducing unwanted mail, visit [www.stopwaste.org](http://www.stopwaste.org).

---

### CREDIT CARD SOLICITATIONS

Opt-Out Services  
Toll free: 888-567-8688  
[www.optoutprescreen.com](http://www.optoutprescreen.com)

Removes your name from the lists of major credit card companies.

---

### MAIL PREFERENCE SERVICE

c/o Direct Marketing Association  
PO Box 282, Carmel NY 10512  
212-768-7277 x2  
[www.dmaconsumers.org](http://www.dmaconsumers.org)

Free mail-in forms available on the web site; \$5 fee if submitted on-line. Has similar services for telemarketing and email marketing lists.

---

### STOPJUNKMAIL.ORG

A program of StopWaste.Org  
877-STOPWASTE (877-786-7927)  
[www.stopjunkmail.org](http://www.stopjunkmail.org)

Mon-Fri 9am-4pm

Helps reduce junk mail. Provides sample letters and phone numbers to direct marketing associations, ADVO Consumers Association, VAL PAK Coupons, and catalog, magazine, or credit card companies. Also provides useful links.

---

## VALPAK DIRECT MARKETING SYSTEMS

8605 Largo Lakes Dr, Largo FL 33773

Toll free: 888-797-1896 x4

[www.coxtarget.com/mailexpression/s/DisplayMailSuppressionForm](http://www.coxtarget.com/mailexpression/s/DisplayMailSuppressionForm)

Use the website to remove yourself from the Valpak Coupons list. Select “Contact Us” – at the bottom of the page and “Request to be removed from our mailing list” – at the bottom of the list. For occasional coupons (pizza tonight?), enter zip code and print local coupons directly from the web site.

---

## FEELING LEFT OUT?

If you would like to list your business or agency in future editions of this guide, or if you know of a good place to go for repair, rental, buying, selling, or donating reusable goods, fill out the form below and send it to us. Thank you!

<b>Type of Service:</b> (circle appropriate categories)	Repair	Rental	Reuse
	Sell	Consignment	Donate

---

Name of Business

---

Address

---

City/State/ZIP

---

Phone

Web Site

---

Days & Hours

---

Description of Service

---

---

Mail or fax this form to:

City of Berkeley  
Solid Waste Management Division  
Recycling/Reuse  
1201 2<sup>nd</sup> Street  
Berkeley, CA 94710  
Fax: 510-981-6360  
TDD: 510-981-6903  
Web: [www.ci.berkeley.ca.us/PW/swm.html](http://www.ci.berkeley.ca.us/PW/swm.html)  
Email: [pwreuse@ci.berkeley.ca.us](mailto:pwreuse@ci.berkeley.ca.us)

To order more copies of this booklet call:

City of Berkeley, Solid Waste Management Division Customer Service  
510-981-7270