



UC Berkeley – City of Berkeley

Settlement Agreement

Economic & Planning Systems, Inc. Report

- “...the most substantial fiscal cost burden attributable to UC Berkeley is the provision of fire and emergency services...”
- “...While UC Berkeley has its own fire inspection and code enforcement personnel, it does not maintain a Fire or Emergency Medical Services (EMS) staff. BFD provides fire and emergency medical protection for the main campus and other UC-owned properties in the City of Berkeley.”

Economic & Planning Systems, Inc. Report

- That study used three different approaches to estimate the costs associated with the Berkeley Fire Department providing service to the University. The cost estimates were (1) 8.8m, (2) 2.8m, and (3) 7.1m, respectively.
 - Service Population – A fair share of BFD costs based on the UC Berkeley population (including students, faculty, and staff).
 - Calls for Service – A fair share of BFD costs based on calls for service to UC properties.
 - Fire Department Service Enhancement – A cost budget that reflects one-time and ongoing resources necessary for BFD to provide dedicated service to UC Berkeley

Special Operations [\$225k]



Technical Rescue

Confined Space Rescue
High/Low Angle Rope
Rescue
Water Rescue



Haz-Materials

Initial & On-Going
Training
New Equipment &
Consumable



Bike Team

Fire Prevention
Inspections
WUI Vegetation Mgmt.
Inspections
Special Events/EMS

Fire Prevention [\$390k]



Building Inspections

Off Campus Annual Inspections
Complaints



Pre-Party Inspections

17 Co Ops
46 Fraternities
16 Sororities



Fire Investigations

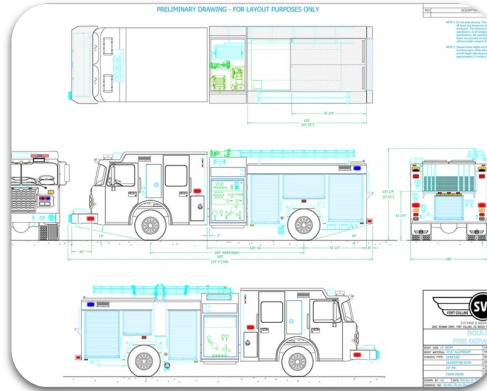
Fires Occur 24/7
Chain of Custody
Substantial Work per Investigation

Logistics/Support Services [\$550k/FY23]



Warehouse Mgmt.

Consumable Supplies
Personal Protective Equipment
Tools & Equipment



Fleet Management

Design/Spec
Maintenance
Electrification



Facilities

Maintenance
Design/



Dispatch

Fire/EMS Manager
Manage Accreditation
Hiring/Personnel

Infrastructure [\$1.3]



Self Contained Breathing Apparatus (SCBA)

Require SCBA that meet current NFPA standards



Mobile Air/Light

Used to connect to buildings with internal air system

Provides the ability to fill SCBA anywhere in the City



Training / Deployment Site

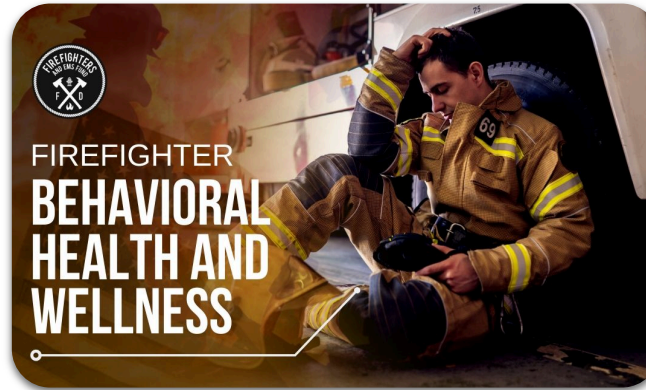
Site planning, development & maintenance

Fire Wellness & Physicals [\$450k]



Annual Physicals

9% higher risk of Cancer diagnosis
14% higher risk of dying from Cancer
Early detection, early treatment



Wellness Programming

PTSD/Depression 5x normal population
Increase resilience, make better decisions



CA Prevention

2nd set of gloves and hood
Equipment to decontaminate PPE

Police Wellness & Physicals [\$400]



Annual Physicals

Shift work/chronic disease
Stress – impacts on cardiac health



Wellness Programming

Increased resilience
Increase job performance
Support healthy life styles



Mental Health

Frequent traumatic exposures
Correlation to mental illnesses
Apprehension to connect with services

Budget Summary

Description	FY22	FY23	FY24	FY25	FY26
Haz-Mat & Tech Rescue	\$224,670	\$142,660	\$105,740	\$108,912	\$112,179
Fire Prevention	\$388,404	\$464,827	\$487,539	\$510,968	\$535,138
Logistics/Support Svcs	\$0	\$522,283	\$424,652	\$437,392	\$450,513
Infrastructure	\$1,330,000	\$1,009,000	\$963,200	\$992,610	\$1,022,241
Fire Wellness	\$454,685	\$263,498	\$476,576	\$485,835	\$500,301
Police Wellness	\$401,430	\$405,243	\$412,204	\$421,210	\$434,196
	\$2,799,189	\$2,807,510	\$2,869,911	\$2,956,927	\$3,054,568

Thank You Mayor & City Council!

