



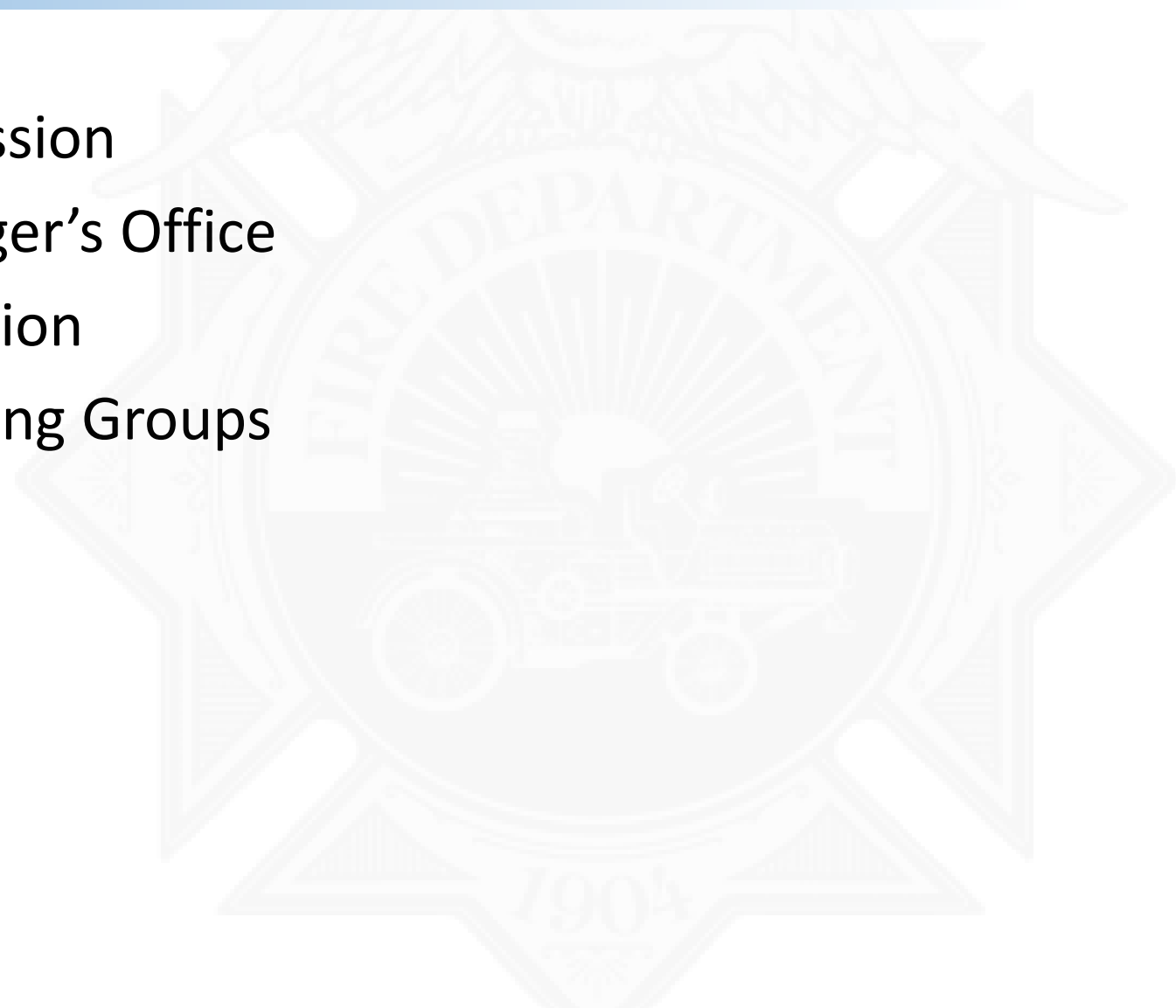
Measure FF

FY22 Project Plan



Process & Stakeholders

- 14 years of planning and discussion
- Council, Mayor and City Manager's Office
- Disaster & Fire Safety Commission
- Labor Executive Board & Working Groups



Brass Tacks & Hard Facts

We hear you. We are in alignment.

- Hiring Freeze
- Unprecedented Attrition
- COVID Assignments
- Recruitment of Specialty Positions
- Built environment
- Critical Work Department Wide



Measure FF

Wildfire Urban Interface



WUI: Community Based Action

1

- Neighbors & CERTs Organize
 - Fire Safe Councils

2

- Fire Safe Councils
 - Adopt FireWise Standards

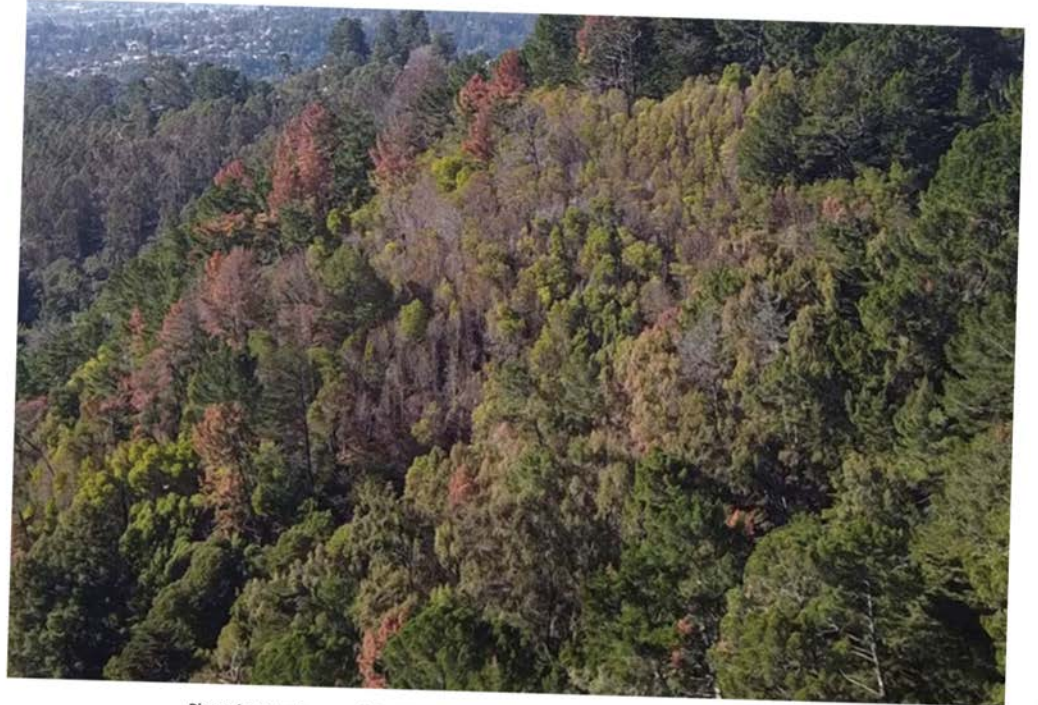
3

- A Fire Adapted Community



WUI: Changing Hazards

- Climate Change
- Changes in vegetation
- Limited resources to educate and enforce compliance



Diseased trees turning orange in the hills of Joaquin Miller Regional Park in January 2021. (Photo by John Brega)

Nature News

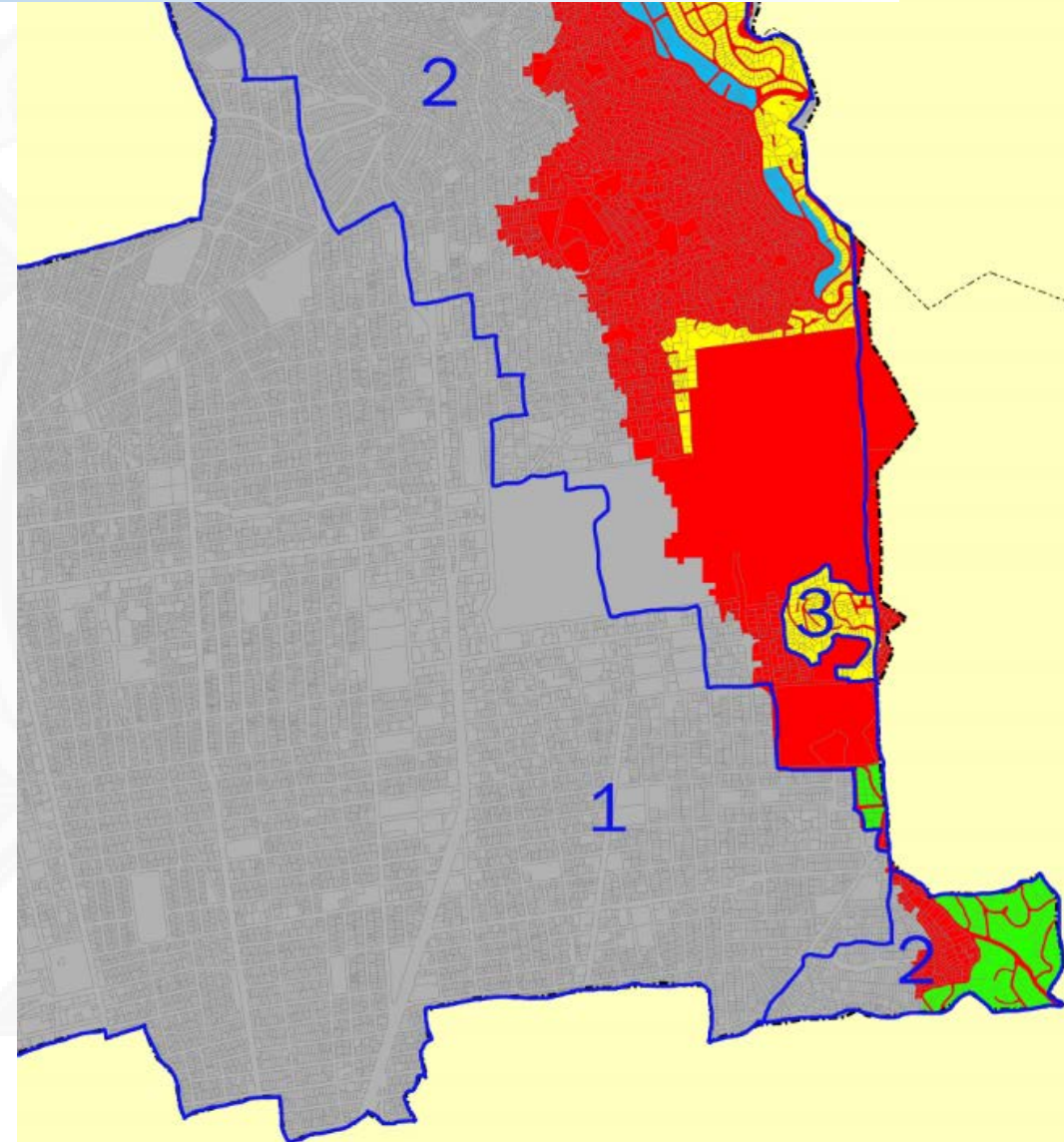
Disease Outbreak Appears to be Killing Bay Area Trees

by *Eric Simons*

March 4, 2021

WUI: Prevention & Preparedness

- Limited fire prevention inspectors
- Currently completing 820 inspections out of 8100
- Limited resources to educate and enforce compliance



WUI: Built Environment

- Narrow winding streets
 - On street parking
 - Unapproved encroachments
- Increasing population density



WUI: FY22 Actions 1/2

1. Recruit & hire retired annuitants
 - Until internal staff are available
2. Vegetation Management Program
 - Wildfire Info. & Self-Assessment Mailer
 - Perform a Community Wildfire Protection Plan
 - Internal & Contracted Vegetation Mgmt.
3. “Safe Passages” program
 - Largely dependent on other departments
 - Includes controversial components
 - Council support would be required



WUI: FY22 Actions 2/2

4. Increase Capacity to Perform Inspections

- 800 to 8000 (FZ 2 & 3)
- Determine compliance program

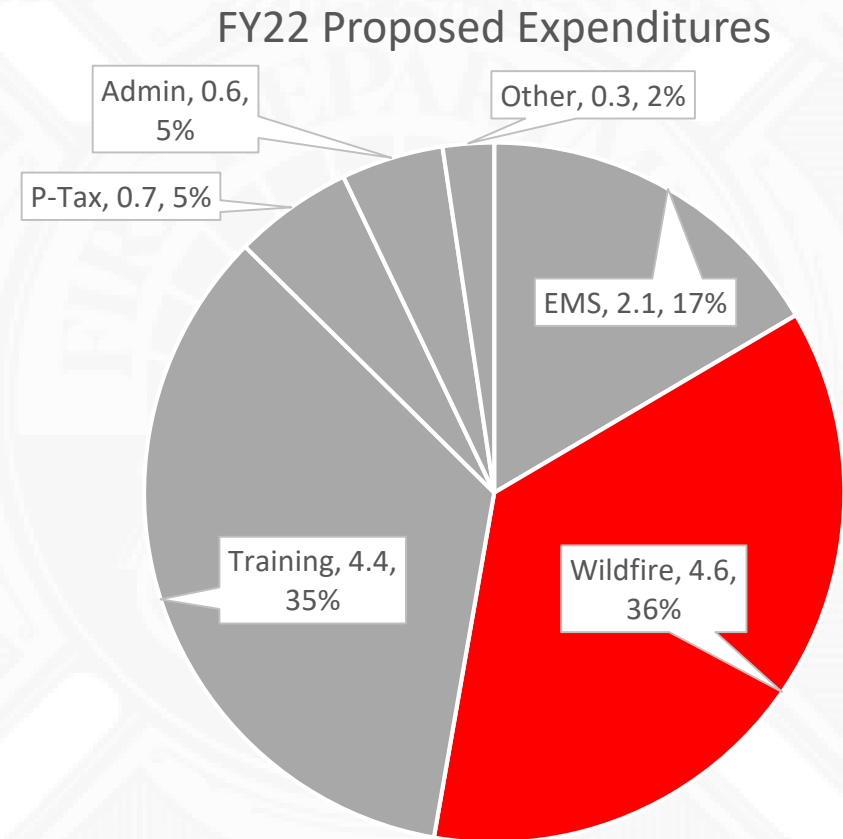
5. Increase Community Outreach

- From fire department & through neighbors

6. Outdoor Warning System

- Installation, training & community engagement

7. Know your zone & evacuation drills

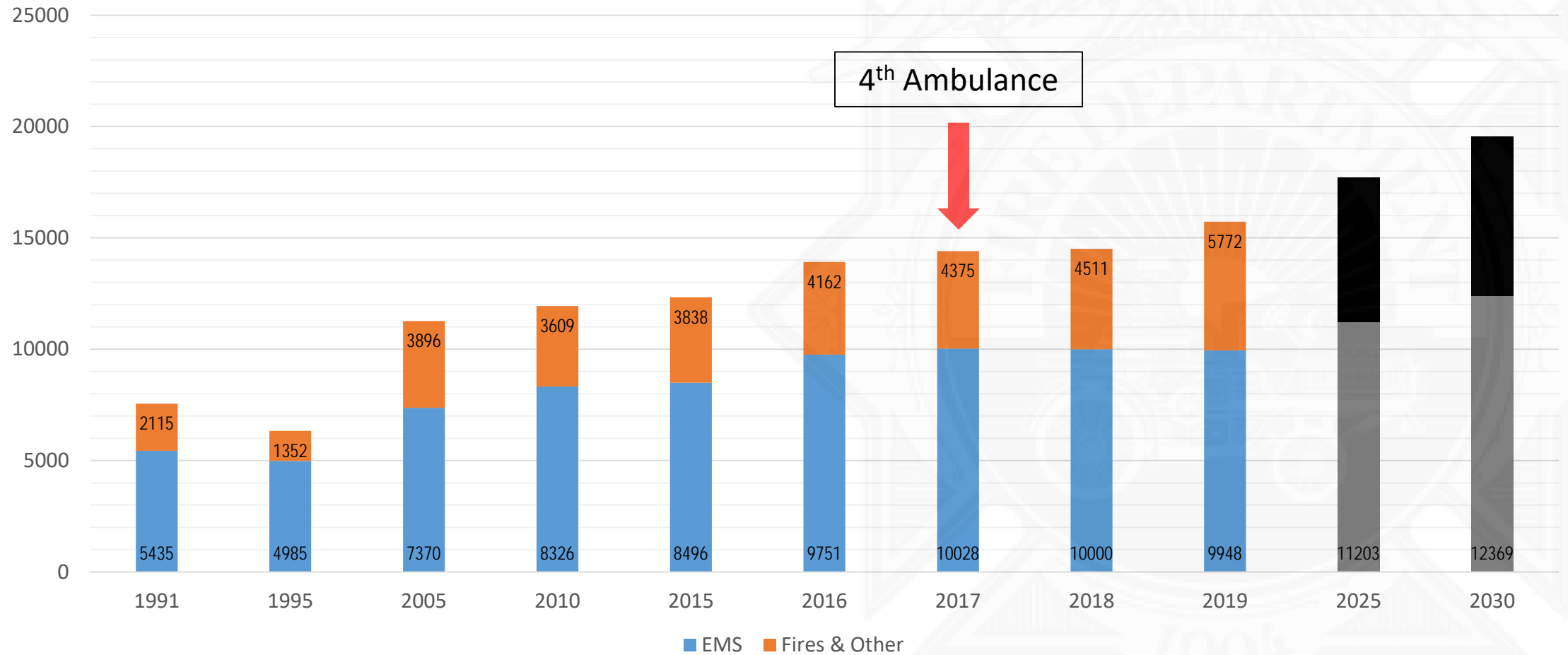


Measure FF

Emergency Medical Service (EMS)

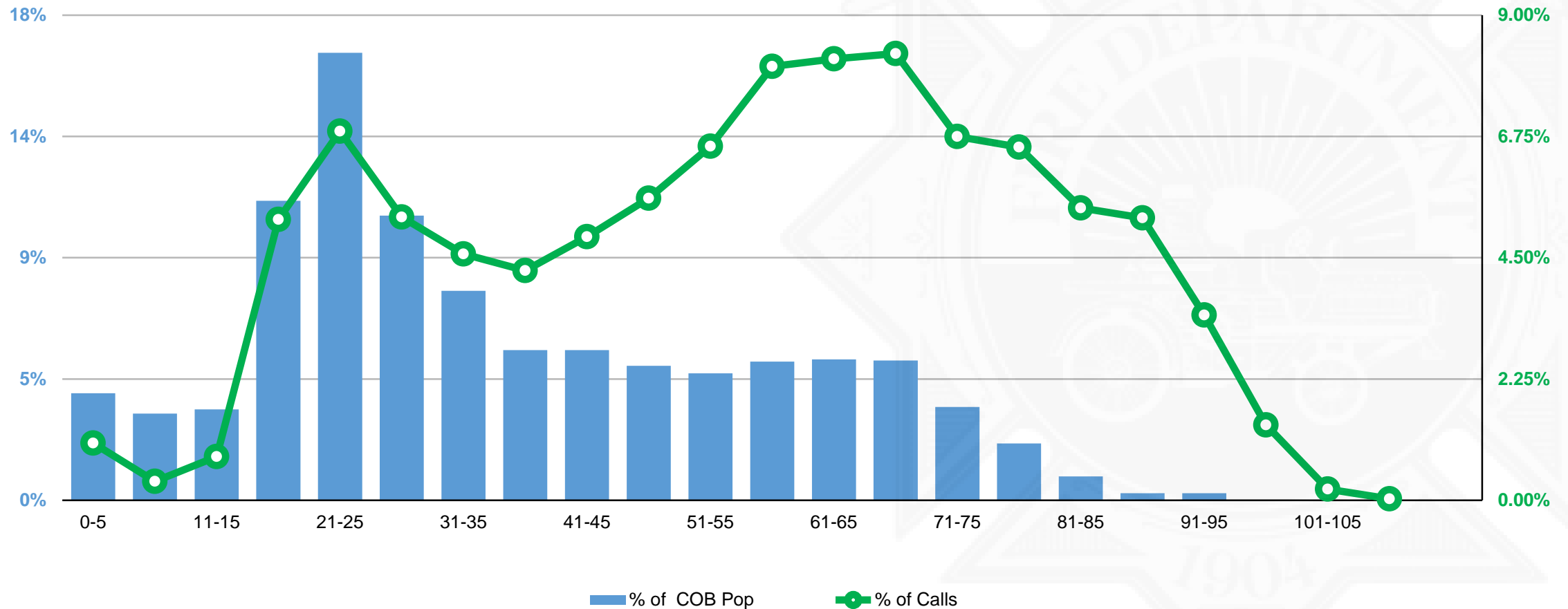


EMS: Call Volume

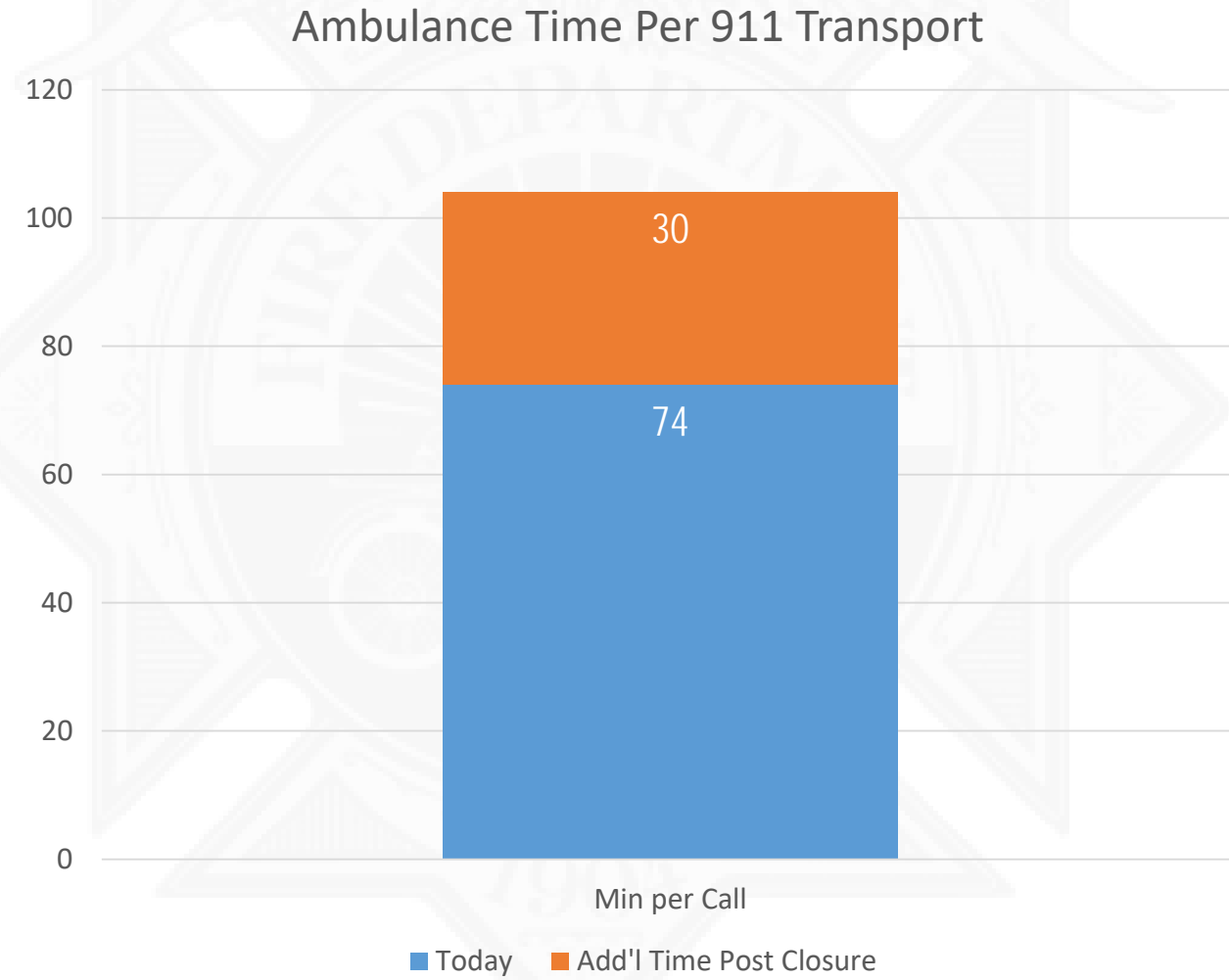
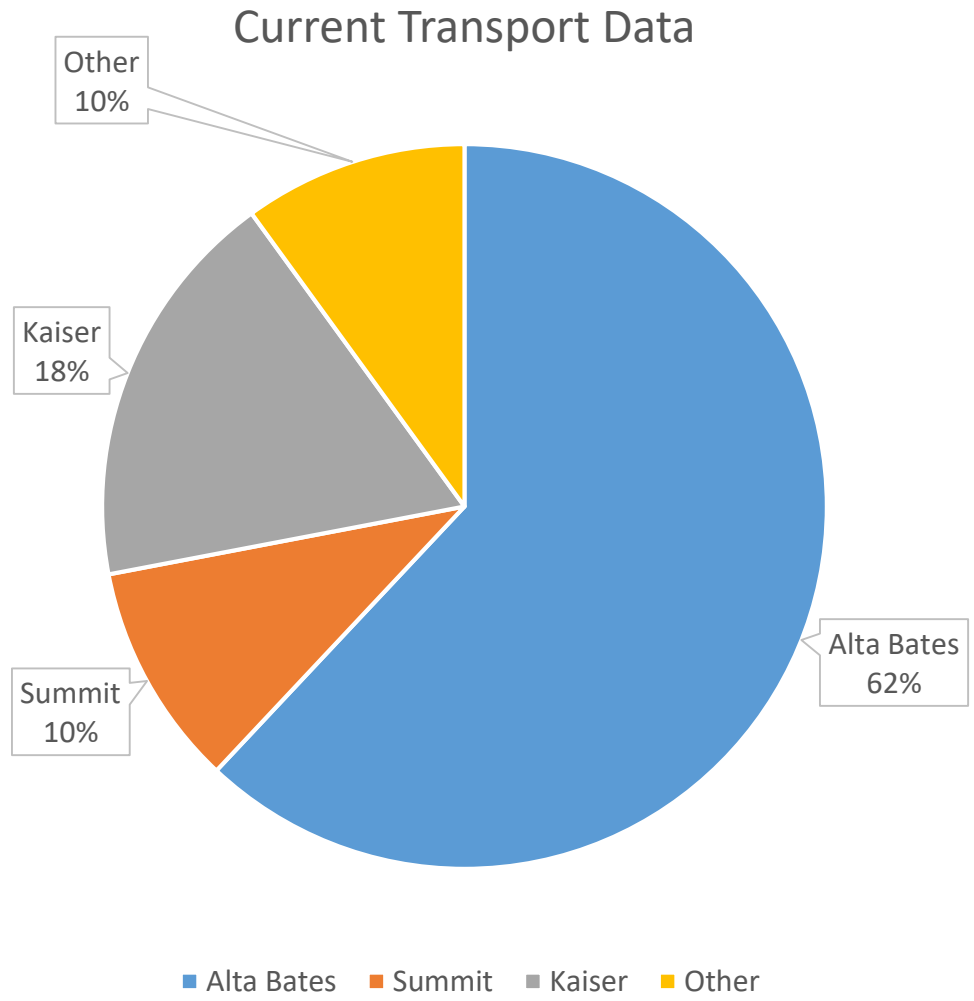


EMS: Patient Demographics

Patients Over Population By Age, 2 Axis



EMS: Closure of Alta Bates



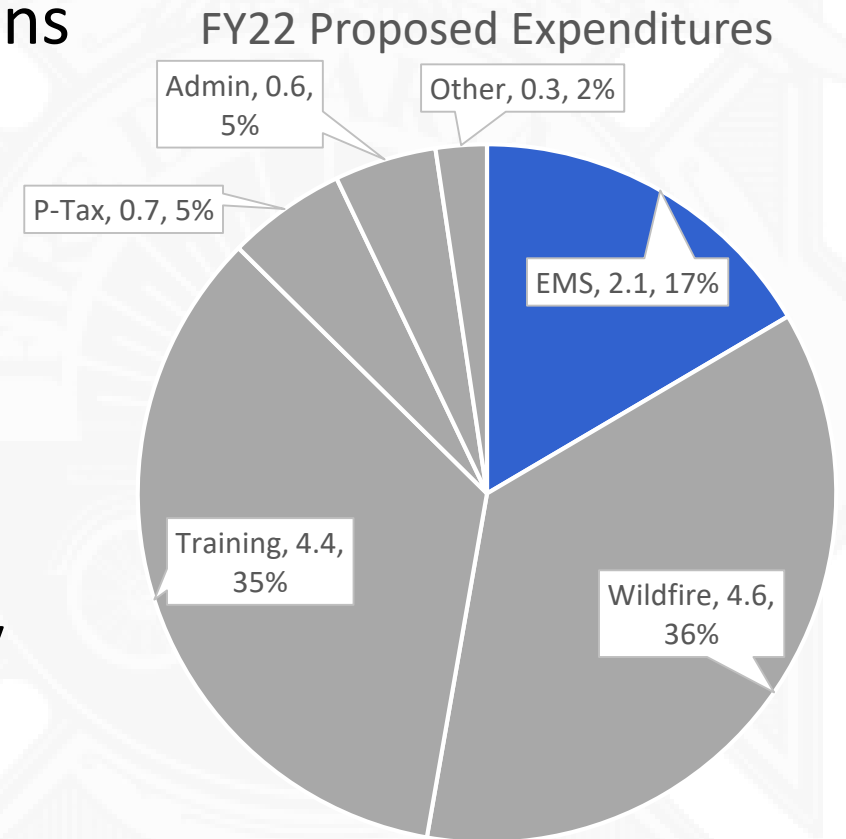
EMS: Recruitment

- High-cost service delivery model
- Remove barriers to entry
- Creating attainable jobs



EMS: FY22 Actions

1. Create new single function job classifications
2. Engage in labor negotiations
3. Create new work schedules & deployment model
4. Increase # of ambulances
5. Create proper administrative support
6. Strengthen recruiting from the community
7. Recruit, hire, train EMTs & Paramedics



Measure FF

Training & Facilities

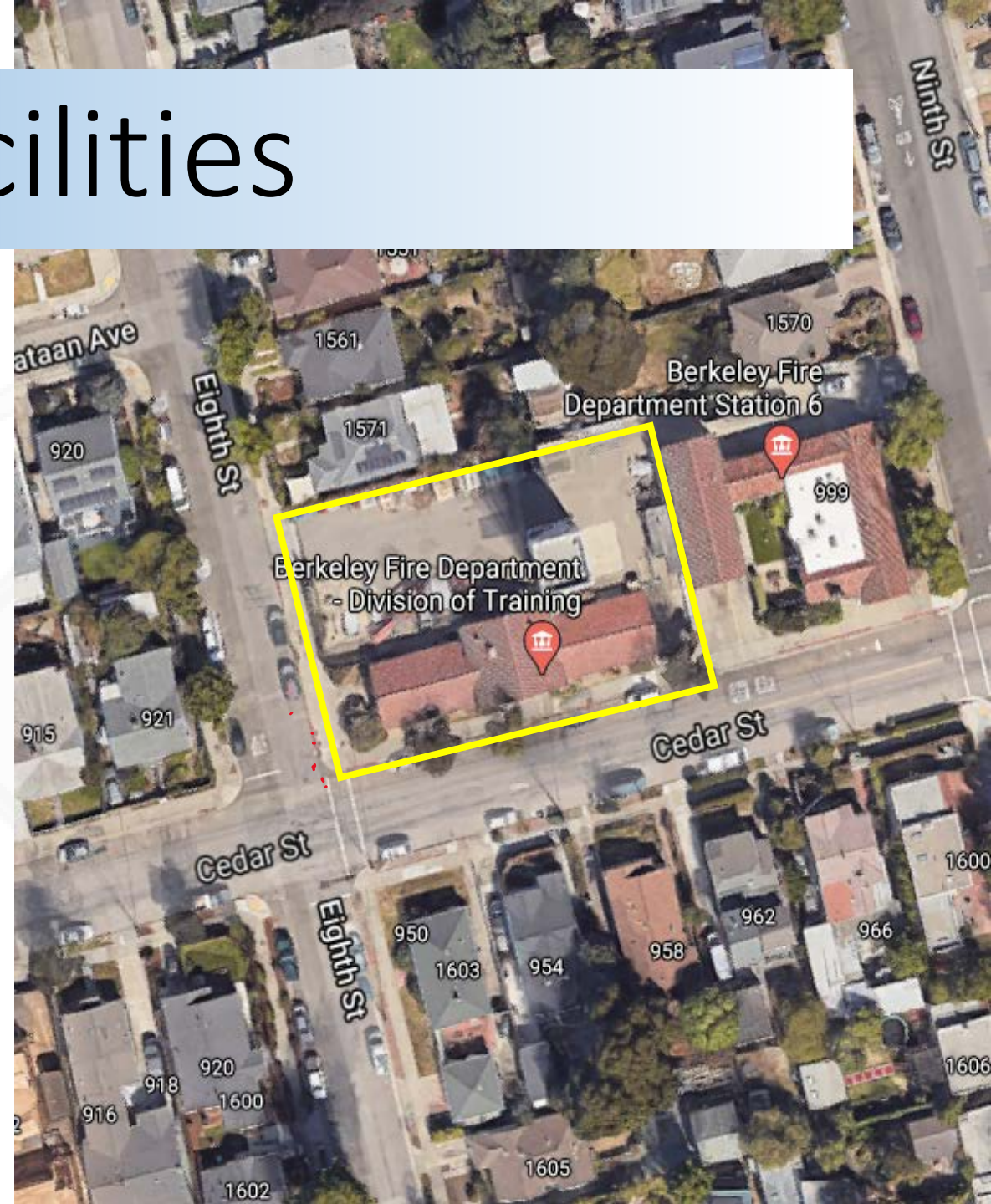


T&F: Mission Creep

1980	1990s	2000	2010	2015-2020
Structure Fires	Structure Fires	Structure Fires	Structure Fires	Structure Fires
Fire Prevention	Fire Prevention	Fire Prevention	Fire Prevention	Fire Prevention
	Emergency Medical	Emergency Medical	Emergency Medical	Emergency Medical
	Disaster Preparedness	Disaster Preparedness	Disaster Preparedness	Disaster Preparedness
	Hazardous Materials	Hazardous Materials	Hazardous Materials	Hazardous Materials
	Wildland Fires	Wildland Fires	Wildland Fires	Wildland Fires
		Weapons of Mass Destruction	Weapons of Mass Destruction	Weapons of Mass Destruction
		Vehicle Extrication	Vehicle Extrication	Vehicle Extrication
		Technical Rescue	Technical Rescue	Technical Rescue
			Active Shooter	Active Shooter
			Water Rescue Swimmer	Water Rescue Swimmer
				Routine Wildland Urban Interface Fires
				Vocational Education
				Boat Operations
				Pandemic Response
				Community Medicine

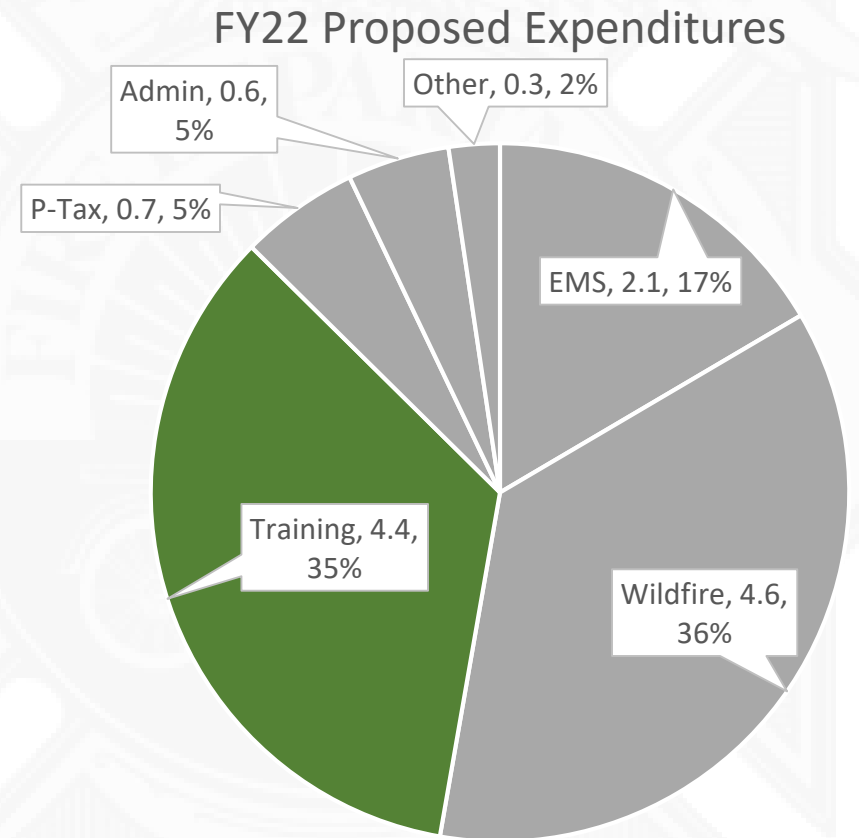
T&F: Department Facilities

- Physical space
- Proximity to residential neighborhood
- Parking



T&F: FY22 Actions

1. Increasing training staff
2. Enhancing professional development
3. Meeting training standards and mandates
4. Seeking to purchase or lease a multi-function property
 - Office Space
 - Apparatus storage
 - Warehouse space
 - FF Training facility
 - CERT Training Facility
 - Dispatch Facilities



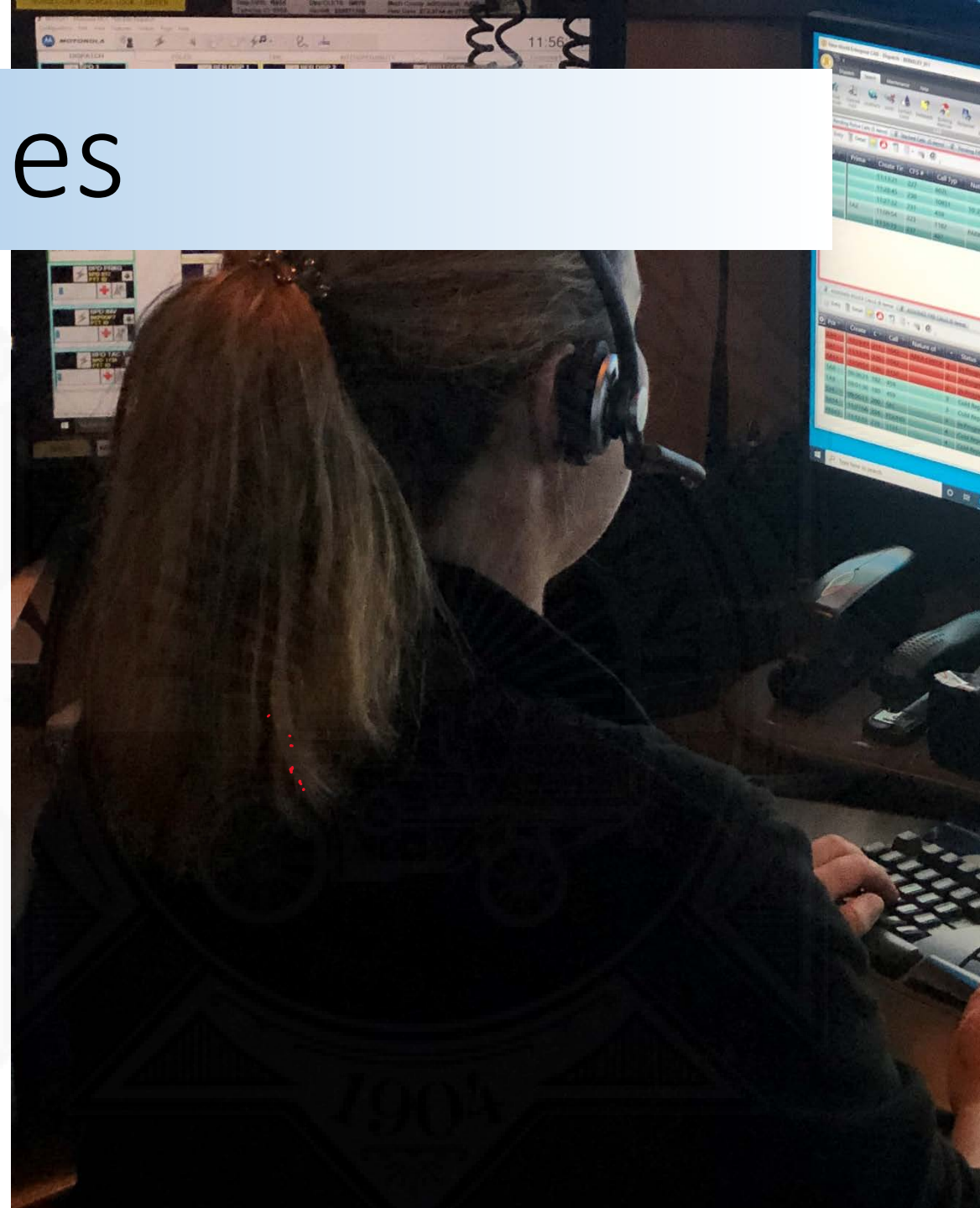
Measure FF

Priority Dispatching for Fire & EMS



Dispatch: Opportunities

- Priority Dispatching
 - Right Resource → Right Call
- Emergency Medical/Fire Dispatching
 - Standardized questioning/911 callers
- Call Routing
 - Doctors, clinics, community based organizations
- On-Going Training
 - Continuing professional development



Dispatch: Charting the Course

- Vendor Proposals Rec'd
 - Selection July '21
- Contract to Council
 - September '21
- Analysis
 - October '21 to April '22
- Implementation Plan
 - April '22 to October '22



Measure FF

Program Coordination & Administration



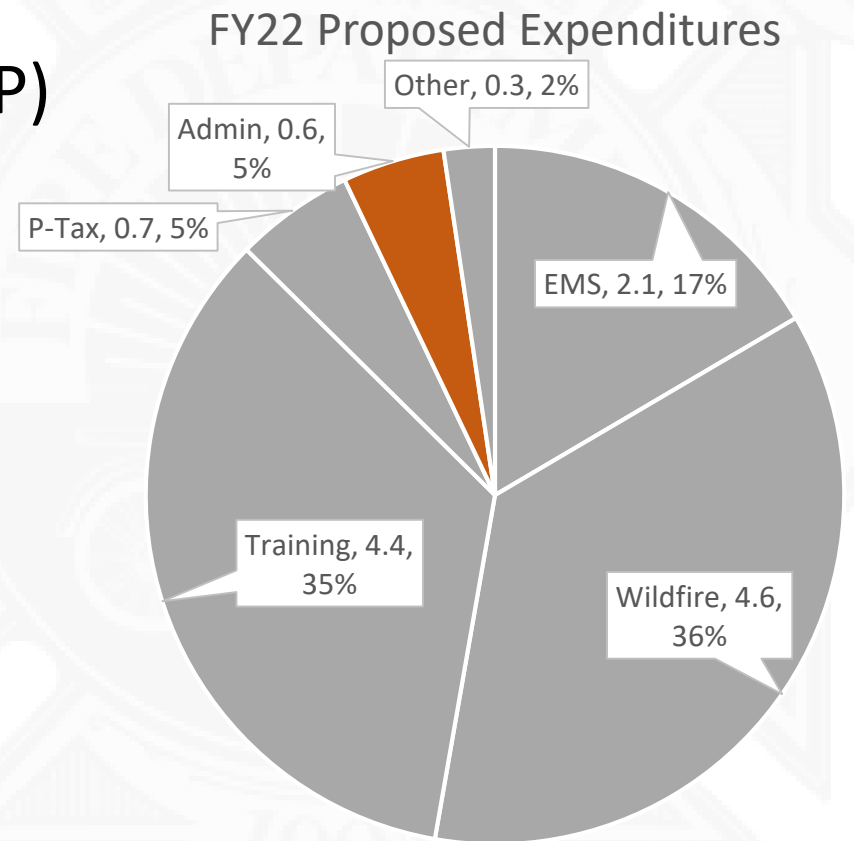
Program Administration

- We **think** we know what is needed
- Large number of complicated, interconnected projects
- Current administration needs more capacity



FY22 Actions: Program Admin

- Standards of Coverage
- Community Wildfire Protection Plan (CWPP)
- Project Management



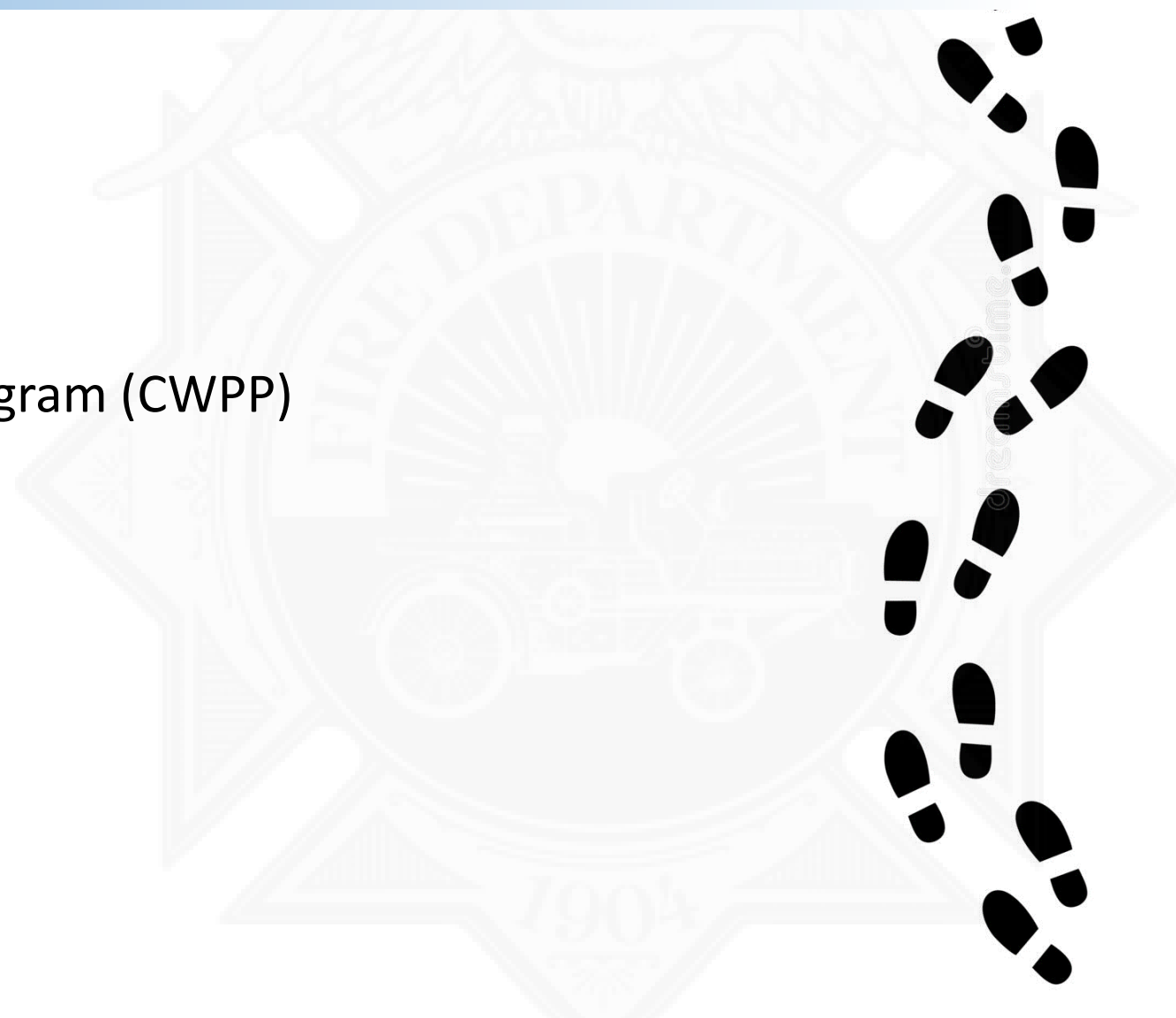
FY22 Funding Allocation

Project	FY22-\$	FY22-%
Emergency Medical Response <ul style="list-style-type: none"> Additional Ambulances & Staff EMS Administration & Support Staff 	2.1m	16.5%
Wildland Urban Interface <ul style="list-style-type: none"> Retired Annuitants & Support Staff Vegetation Management, Safe Passages & Inspections Outdoor Warning System & Evacuation Drills 	4.6m	36.2%
Training of Personnel <ul style="list-style-type: none"> Purchase or Lease of Physical Property Training Staff member 	4.4m	34.6%
Program Coordination & Administration <ul style="list-style-type: none"> Standards of Coverage Analysis & Report Program Management Contract Community Wildfire Protection Plan 	600k	4.7%
Paramedic Tax Deficit	700k	5.6%
Other (Includes: HazMat & Tech Rescue funding)	300k	2.4%
Total FY22	12.7m *	100%

* FY22 Includes recurring funding of 8.5m and a **one-time** additional 4m in revenue (collections 1/1/21 – 6/30/21)

Immediate Next Steps

1. Community wildfire mailers
2. Recruit & hire annuitants
3. July 20th Wildfire Work Session
4. Community Wildfire Prevention Program (CWPP)



Thank you...



Our team is working hard for you and is excited for the next year!