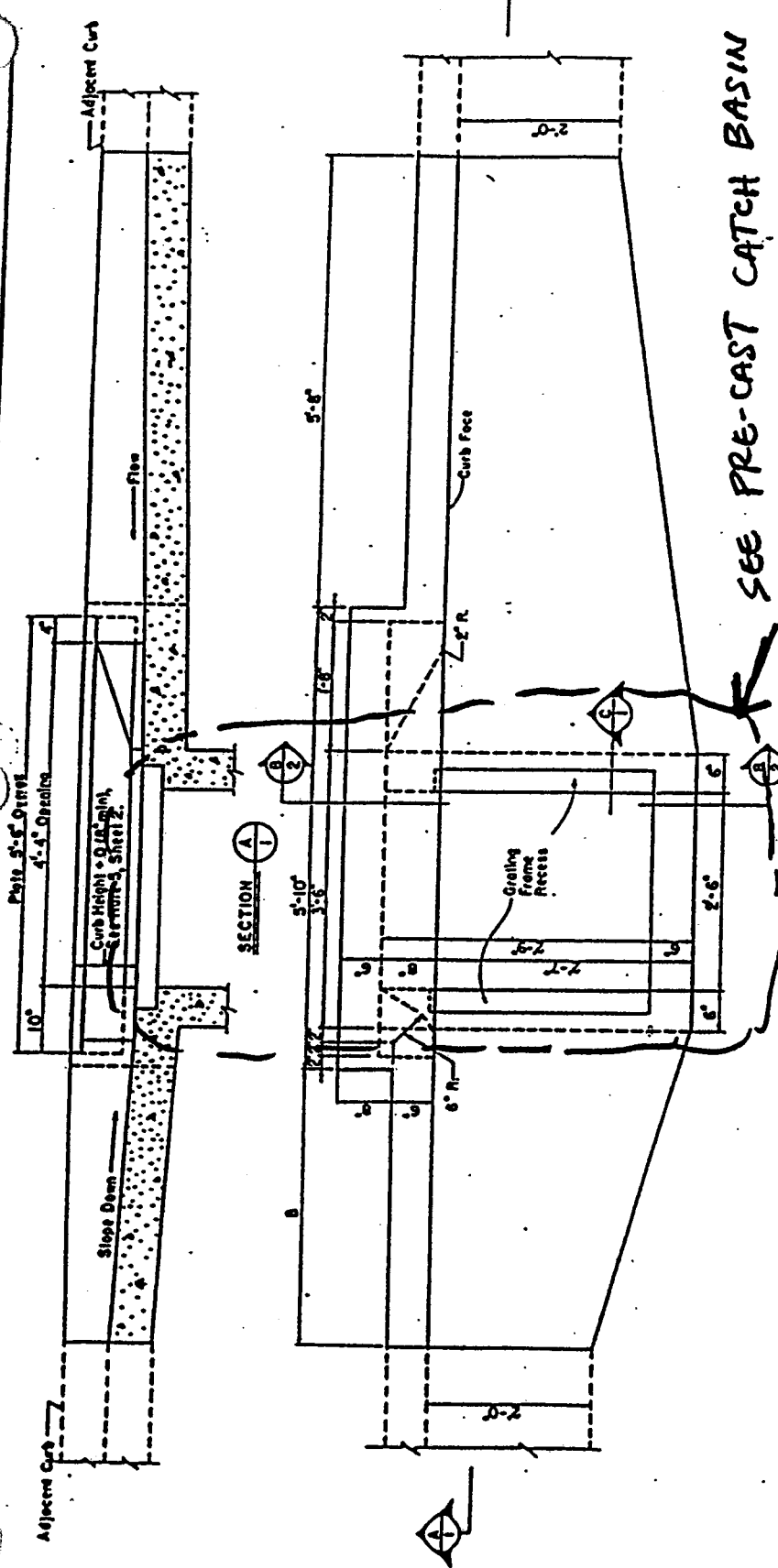


Public Works
Engineering Division

City of Berkeley
Standard Details

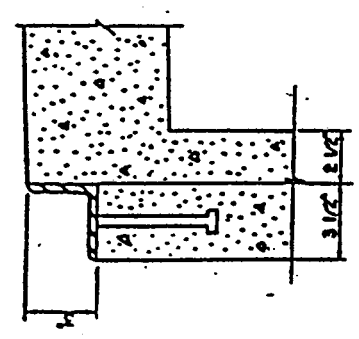
Storm Drainage



SEE PRE-CAST CATCH BASIN

- NOTES:
1. ALL CONCRETE SHALL BE 6-C-3000, 3" MAX. SLUMP.
 2. ALL CURB AND GUTTER SHOWN BY SOLID LINE IS A PART OF THE CATCH BASIN FOR PAYMENT PURPOSES.
 3. VIBRATE CONCRETE AS IT IS PLACED.
 4. FOR 2 WAY CATCH BASINS, SEE SHEET 2.
 5. ALL WORK TO BE IN ACCORDANCE WITH "PWA STANDARD SPECIFICATIONS FOR PUBLIC WORKS CONSTRUCTION."

PLAN VIEW



SECTION

CURB SLOPE %	D		B	
	TO AND INCLUDING	INCHES	FEET	FEET
0.0	2.5	2	3.5	
2.5	4.0	3	3.5	
4.0	5.5	3	3.5	
5.5	7.5	3	2.5	
7.5	9.0	3	2.0	
9.0	12.0	3	1.5	
12.0	16.0	4	1.5	
16.0	20.5	5	1.5	

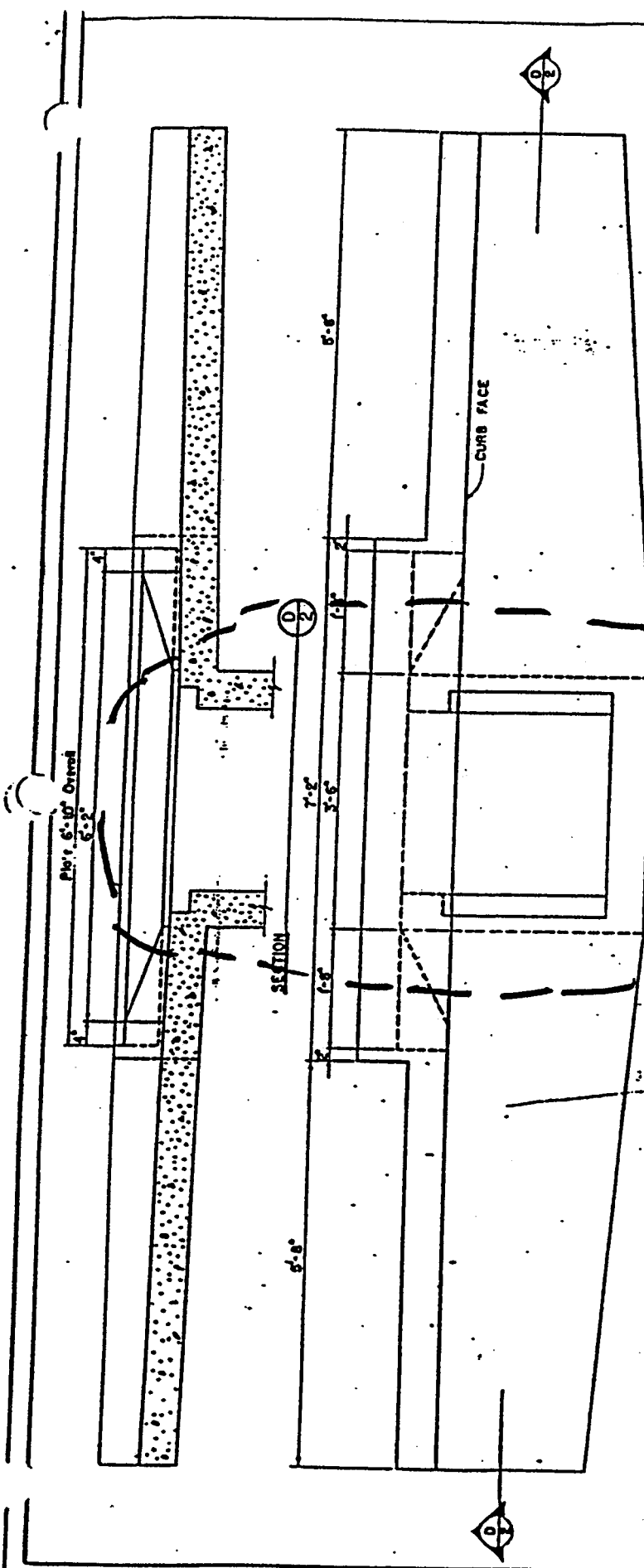
Dimension D Not Applicable To Two-way Catch Basin - See Sheet 2.

RECORDED APPROVAL: *[Signature]* DATE: 11/17/11
 APPROVED: *[Signature]* DATE: 11/17/11
 DIRECTOR OF PUBLIC WORKS

CITY OF BERKELEY
 DEPARTMENT OF PUBLIC WORKS

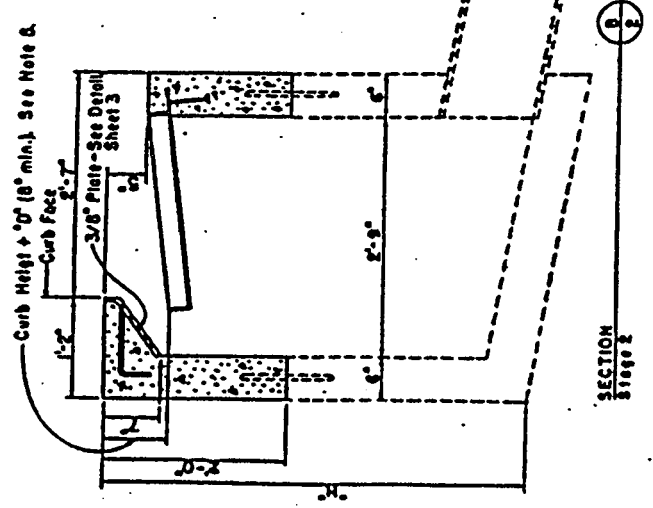
STANDARD CATCH BASIN
 TOP & APRON DETAILS

NO. 1011
 SHEET NO. 1 OF 2
 DATE: 11/17/11

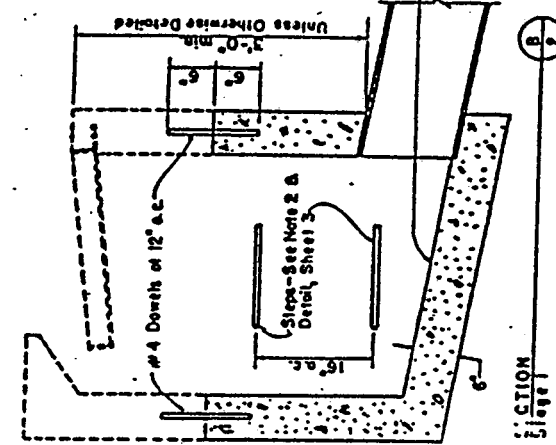


SEE PRE-CAST CATCH BASIN

PLAN - TWO WAY CATCH BASIN



SECTION STAGE 2

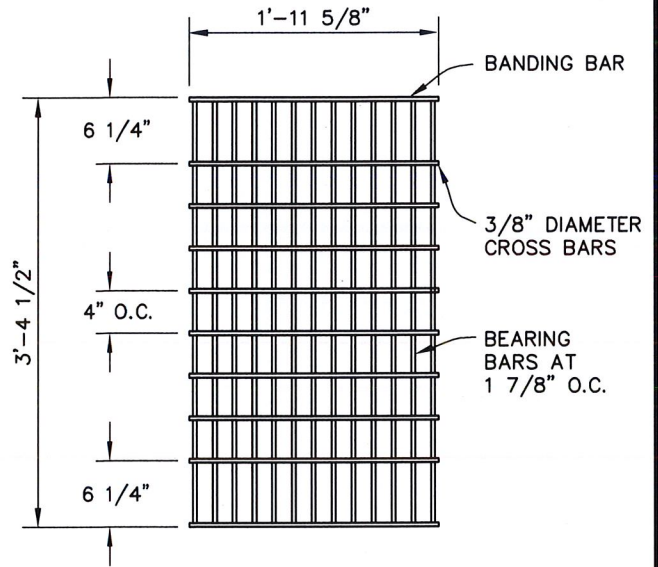
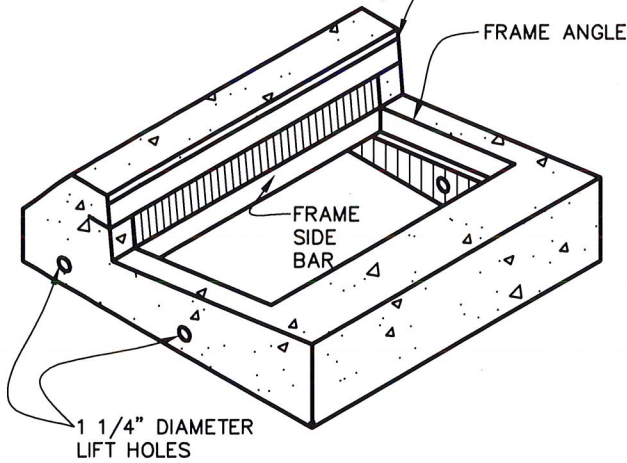


SECTION STAGE 1

- NOTES
1. Where "M" Exceeds 6, Place No. 4 Bars At 12" o.c. Both Ways In Walls & Floor.
 2. All Catch Basins Exceeding 3' Depth Shall Have 3/4" x 1/4" Galvanized Steel Strips Placed As Directed On 18" Centers.
 3. Reinforcing Steel Shall Conform To ASTM A615, Grade 40, Deformed.
 4. If Stage Construction Is Used, It May Be Divided Into Stages 1 & 2, As Shown.
 5. Place 3/4" x 8 Galvanized Rod Across Gallery Opening When Curb Height + "D" Exceeds 10". Place So That Clear Opening Is Not Less Than 3" Nor More Than 7". Install Rod 2" Behind Curb Face.
 6. All Dimensions For Two-Way Catch Basins Not Shown Are Same As One-Way Catch Basin.

APPROVED DATE: 12/22/11 PROJECT: 11111 SHEET: 11111 DRAWN BY: [Signature] CHECKED BY: [Signature]	CITY OF BERKELEY DEPARTMENT OF PUBLIC WORKS	STANDARD CATCH BASIN CONSTRUCTION DETAILS	SHEET NO. 6165 OF 11
--	--	--	-------------------------

NOSING ANGLE
3 1/2" x 3 1/2" x 1/2" x 48"L



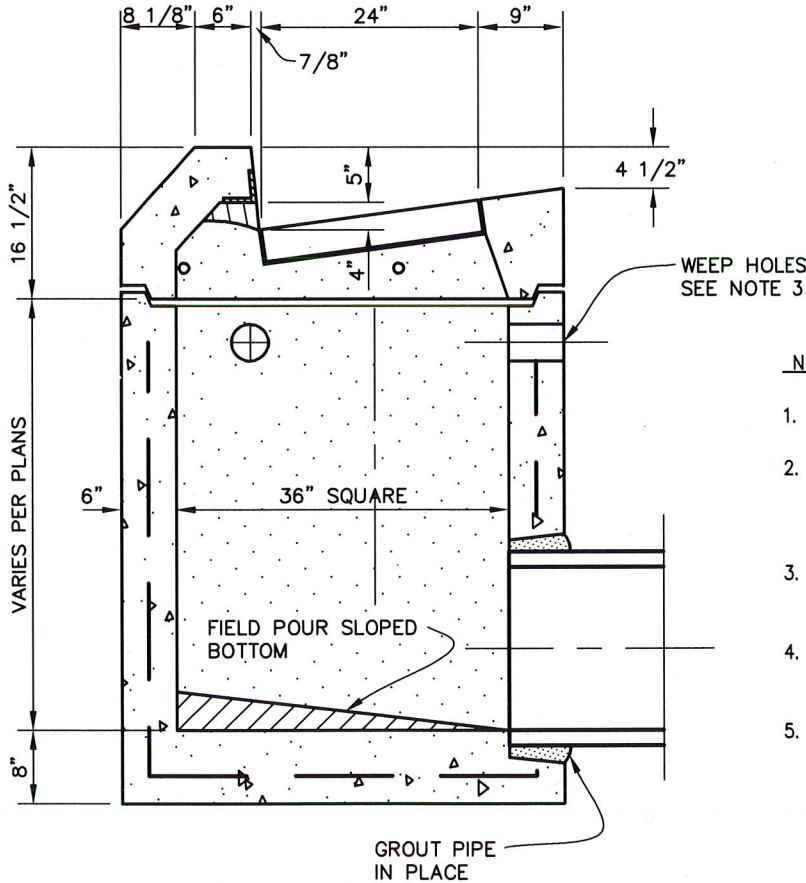
PRECAST TYPE V TOP

GRATE TYPE V

13 BEARING BARS 3 1/2" x 3/8"
2 BANDING BARS 2 1/2" x 3/8"

FRAME

4" x 3" x 1/2" ANGLES
3 1/2" x 1/2" SIDE BARS



NOTES:

1. CONCRETE SHALL TEST 3000 PSI AT 28 DAYS.
2. ALL METAL SHALL BE STRUCTURAL GRADE STEEL AND BE GALVANIZED AFTER FABRICATION PER ASTM A123.
3. REQUIREMENTS FOR AND LOCATION OF 4" DIA. WEEP HOLES TO BE VERIFIED BY CONTRACTOR.
4. WALLS AND FLOOR ARE REINFORCED WITH 4"x4" W6-W6 WWF.
5. WEIGHT OF PRECAST TOP WITHOUT GRATE = 1350 LBS. GRATE = 210 LBS.

**TYPICAL INSTALLATION
ON PRECAST BASE**

CBWCI

**CITY OF BERKELEY
DEPARTMENT OF PUBLIC WORKS**

**STANDARD DETAIL
CATCH BASIN
WITH CURB INLET**

SUBMITTED:
[Signature]
SUPERVISING CIVIL ENGINEER

DATE: 10/9/17
R.C.E. 64582
EXP. 6/30/19

APPROVED:
[Signature]
MANAGER OF ENGINEERING

DATE: 10/6/17
R.C.E. 72491
EXP. 6/30/18

DESIGN: DA
DRAWN: JP
CHECK:

DATE: 10/17
SCALE: N.T.S.
BOOK:

PLAN: 6166
FILE: 20-B-105