

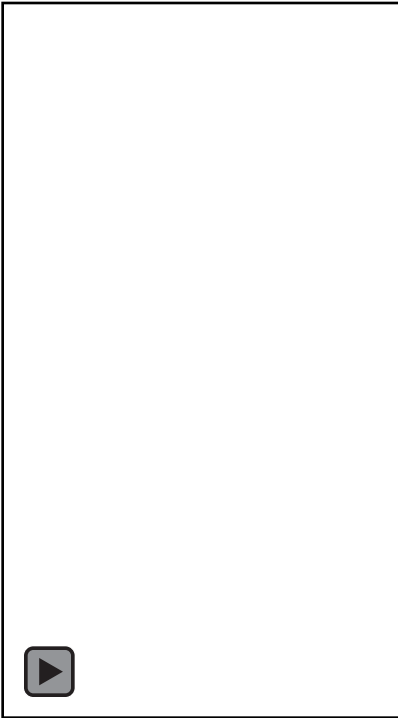
Assisting admin. Of EpiPen



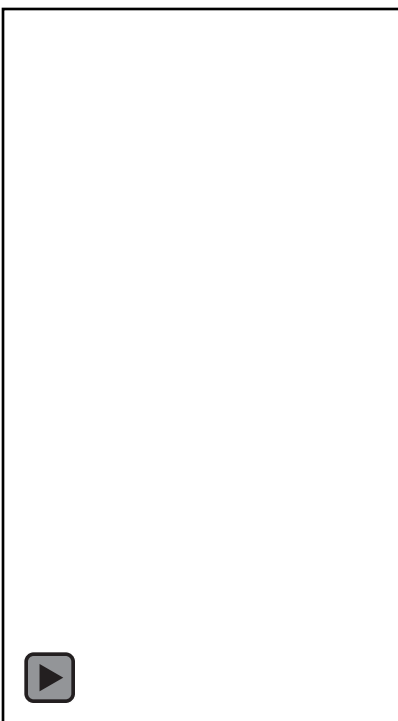
Epinephrine auto-injector

- ▶ There are several brand names, the most common is EpiPen
- ▶ For treatment of Anaphylaxis, which is a severe allergic reaction
 - ▶ Can become anaphylactic shock, which is a life threatening condition

Anaphylaxis



Also this guy



Criteria for Assisting with EpiPen

- ▶ Patient will usually have a chief complaint of short of breath
- ▶ Evidence of anaphylaxis
 - ▶ Breathing problems
 - ▶ Rapid pulse (tachycardia)
 - ▶ Hives or rash
 - ▶ Nausea
 - ▶ Swelling
 - ▶ Itching

FIRST AID UPDATE FOR PATROL

**Traumatic Injuries &
Patrol Car Trauma Kits**



POLICE OFFICERS AS FIRST AID PROVIDERS

- **TACTICS BEFORE MEDICINE**
 - Address the tactical situation and make the scene safe before beginning treatment



ONE MORE WORD ON OFFICER SAFETY...

- Body Substance Isolation
- Or
- Personal Protective Equipment
- Or
- Universal Precautions

- Whatever you want call it...



PERSONAL PROTECTIVE EQUIPMENT GLOVES ARE THE MINIMUM



MASK?



GLASSES?



FULL PPE!



TACTICAL TREATMENT OF BLEEDING

Direct pressure for all bleeding always

- Extremity hemorrhage:
 - **Tourniquet!**
- Neck or Groin hemorrhage
 - Quikclot gauze, wound packing
- Minor to Moderate bleeding
 - Direct pressure
 - Gauze dressing
 - Bandage or Pressure Dressing



WHAT'S A TOURNIQUET?

CAT Tourniquet standard in Alameda Co.



Apply the tourniquet

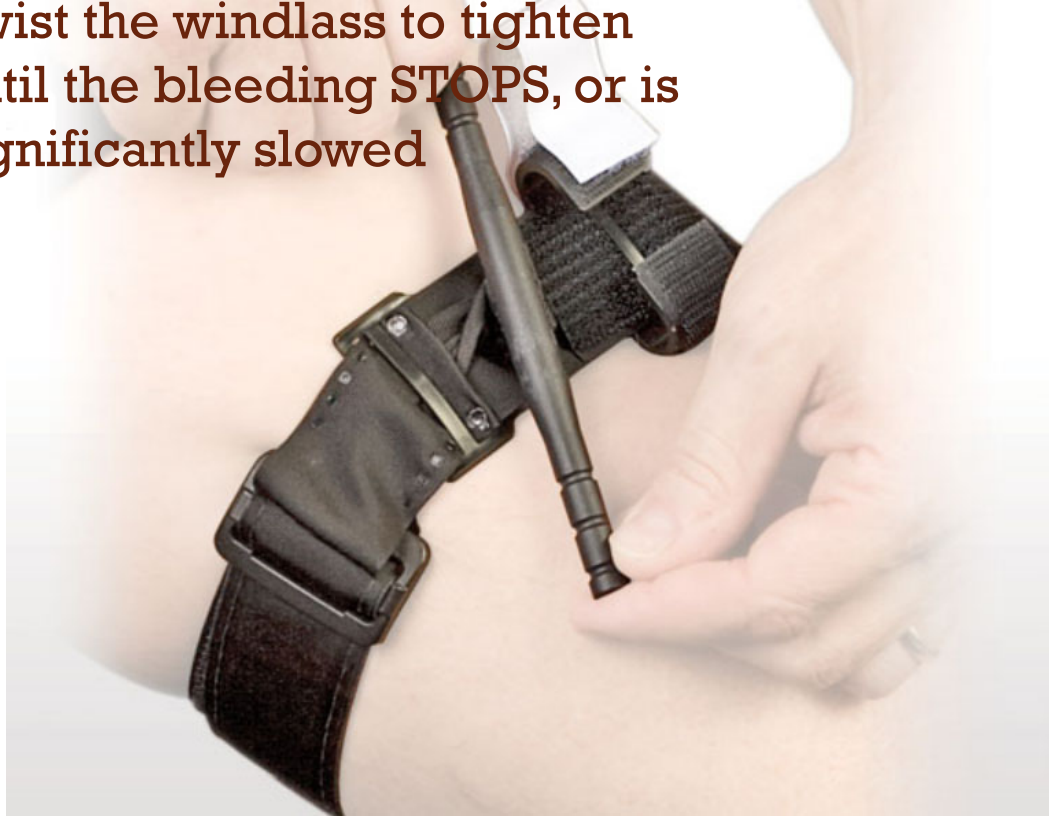
- 2-3 inches above the wound
- NOT on a joint
- Cinch the strap by hand



WHAT'S A TOURNIQUET ?



Twist the windlass to tighten until the bleeding **STOPS**, or is significantly slowed



WHAT'S A TOURNIQUET ?



Secure the windlass inside the guard, and secure the velcro

Write down the time, or notify control



WHAT'S A TOURNIQUET ?



USE OF TOURNIQUETS

- For extremity hemorrhage
- Use for up to 6 hours shown to have no negative consequences related to later function of the limb
- Place 2-3 inches above the injury or
- Place high, at the top of the limb
- Tighten until bleeding slows/stops
- Note time and write it on the CAT, or on the patient



USE OF HEMOSTATIC GAUZE AKA QUIKLOT

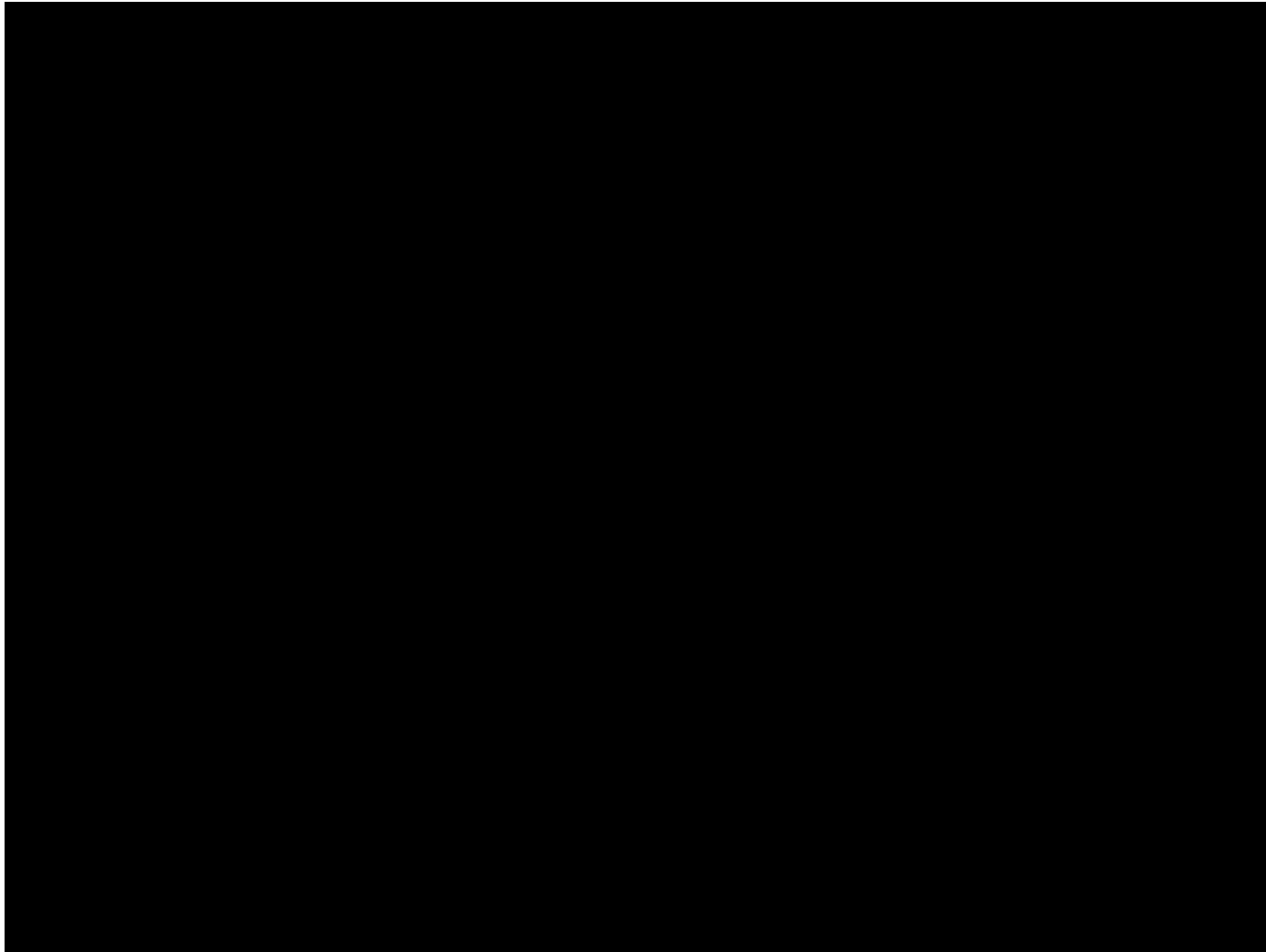
- For serious hemorrhage where tourniquets are not feasible, esp.
 - Neck
 - Groin
 - Back



HEMOSTATIC GAUZE



USE OF HEMOSTATIC GAUZE: QUIKCLOT



CHEST SEALS

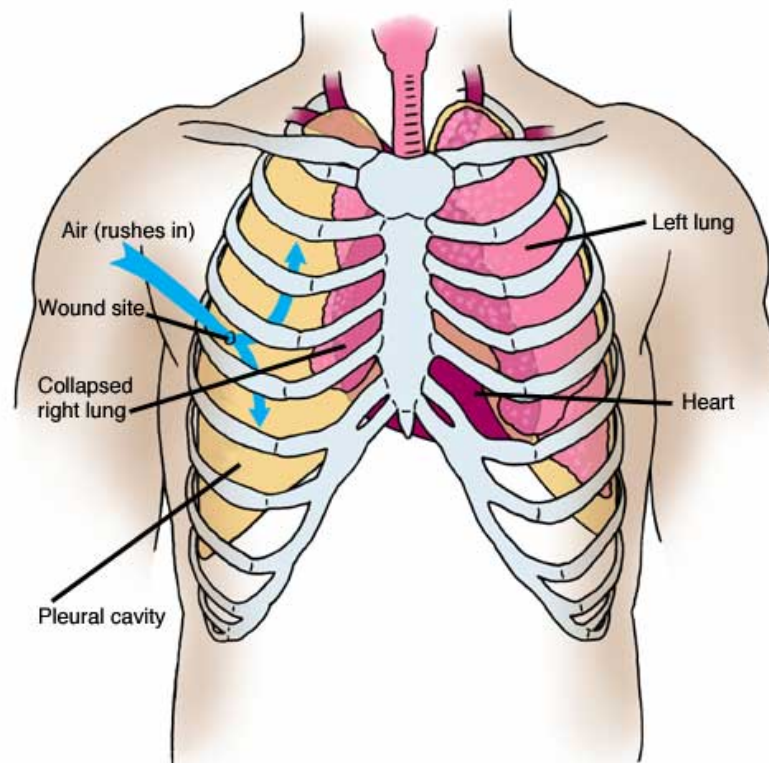


SIGNS/SYMPTOMS OF SUCKING CHEST WOUNDS

- Penetrating trauma to chest area (neck to navel, front or back)
- Sounds of air transfer from wound: spitting, hissing, bubbling
- Coughing up blood
- Short of breath, or trouble breathing
- Cyanosis, due to hypoxia (lack of O₂)
 - Patient starts turning blue



TENSION PNEUMOTHORAX



USE OF CHEST SEALS



USE OF OCCLUSIVE DRESSINGS



Copyright © 2011 by The American National Red Cross



ISRAELI BANDAGE

The
Emergency
Bandage

