



South Cove

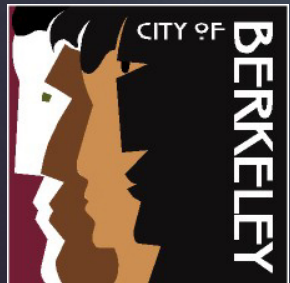


Berkeley Tuolumne Camp



San Pablo Park 5-12 PS

Parks, Recreation & Waterfront Capital Improvement Projects



**Parks
Make
Life
Better!**

Summary of Presentation

- ▶ Unfunded Projects
- ▶ Highest Need Projects
- ▶ Completed Construction Projects in FY20 and FY21
- ▶ Completed Planning Projects
- ▶ Projects in Construction
- ▶ Projects Bidding
- ▶ Funded Projects in Design
- ▶ Future Funded Projects
- ▶ Current Grant Applications

Unfunded Projects -182M

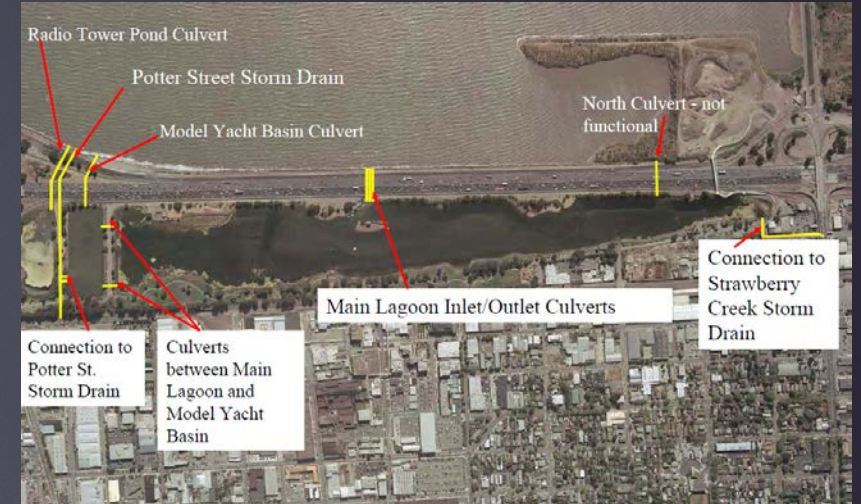
▶ Current Unfunded Need

Waterfront \$113M

Parks \$55.6M

Camps \$5.9M

Pools \$7.5M



▶ Making Progress...

▶ Reduced From \$220M in 2016

T1 Phase 1 and 2

Measure F (Parks Tax)

Grants



Highest Need Unfunded Projects: Camps and Pools

West Campus Pool

Tile, Plaster **\$300K**

Filter Replacement **\$160K**

Echo Lake ADA

Phase 1: **\$705K**

Phase 2: \$1.3M

FY21 deffered GF Capital

\$2.2M

Need **\$1.165M** in FY22



West Campus Pool
Filter



Echo Lake
Camp

Highest Need Waterfront Projects

- ▶ Dock Replacement (J, L, M, N) \$32M
- ▶ Dredging in Main Channel and South Cove \$8.5M



Dock



South Cove by West Dock

Decaying Infrastructure - Waterfront



Misc finger dock



Docks



Aged Sheet Pile Wall –
South Cove



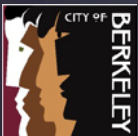
Decaying Timber Piles



Low lying Area – Marina Blvd

Construction Projects Completed last 18 months

- ▶ Aquatic Park – South Pathway (Parks Tax/ Bayer)
- ▶ Aquatic Park – Tide Tube Clean Out (T1)
- ▶ George Florence 2-5, 5-12 Play structures (T1)
- ▶ James Kenney 2-5, 5-12 Play structures (Grant/ Parks Tax)
- ▶ John Hinkel Upper Picnic Area and ADA (Grant/Parks Tax/ Insurance)
- ▶ Live Oak Community Center (T1/Parks Tax)
- ▶ Strawberry Creek Park 2-12 Play Area (T1/ Parks Tax)
- ▶ Strawberry Creek Park Restroom (T1)
- ▶ Waterfront – Dock O, LM, DE, FGHI (4) Restroom Remodels (GF)
- ▶ Waterfront – South Cove Bay Trail, Docks and ADA (3 grants/Marina Fund)
- ▶ Waterfront – Finger Dock Replacement Phase 1 and 2 (GF/Marina Fund)



Completed Construction

- ▶ Strawberry Creek Park Play Area
- ▶ South Cove
- ▶ John Hinkel Park Upper Picnic Area



Strawberry Creek Park



Bay Trail – South Cove



John Hinkel Picnic Area

Completed Construction

- ▶ Bay Trail – South Cove
- ▶ George Florence Park



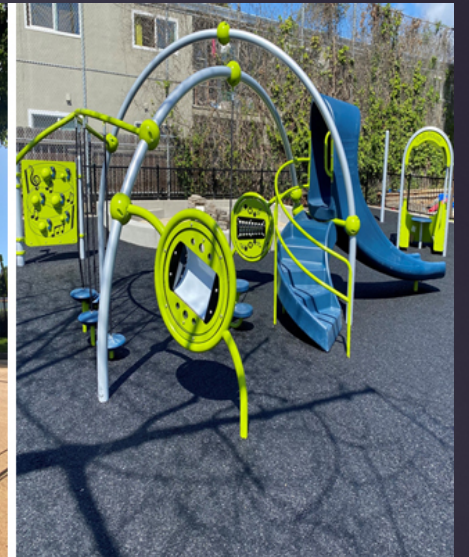
South Cove Ramp



South Cove Restrooms



George Florence Park



Completed Construction

10

- ▶ James Kenney Play Area
- ▶ Live Oak Community Center



James Kenney Park Playground



Live Oak Community Center

“Planning Only” Projects Completed last 18 months

11

- ▶ City Wide Restroom Study (T1)
- ▶ Echo Lake ADA – Phase 1 Design complete/ Phase 2 Conceptual Design (GF)
- ▶ Frances Albrier Community Center with Pool Conceptual Design (T1)
- ▶ Tom Bates Sports Complex: Field House/ Restroom – Conceptual Design (T1)
- ▶ Waterfront- Sea Level Rise Study (T1)
- ▶ Willard Clubhouse Replacement- Conceptual Design (T1)

Planning Projects



Frances Albrier Community Center



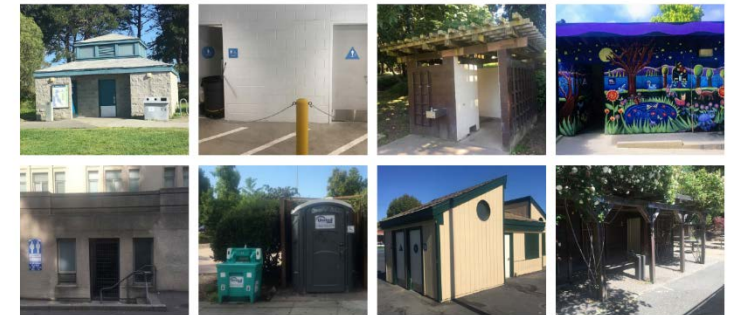
Willard Clubhouse



Tom Bates Community Space & Restroom

BERKELEY WASH ASSESSMENT

SITE VISITS SUMMARY



HYPHAE DESIGN LABORATORY, 2020

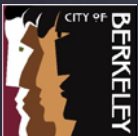


Citywide Restroom Study

Construction in Progress

13

- ▶ Berkeley Tuolumne Camp (Insurance/ FEMA Grant/GF)
- ▶ Rose Garden Pergola, Pathways and Tennis courts (T1/ Parks Tax)
- ▶ San Pablo Park 2-5, 5-12 Play Structures (T1/ Parks Tax)
- ▶ San Pablo Tennis Courts (T1/ Parks Tax)
- ▶ Waterfront Corp Yard Electrical and Beam Replacement (T1)



Construction In Progress



Berkeley Tuolumne Camp



Berkeley Rose Garden Tennis Courts



San Pablo Park Tennis Court Bleachers



San Pablo Park Playground



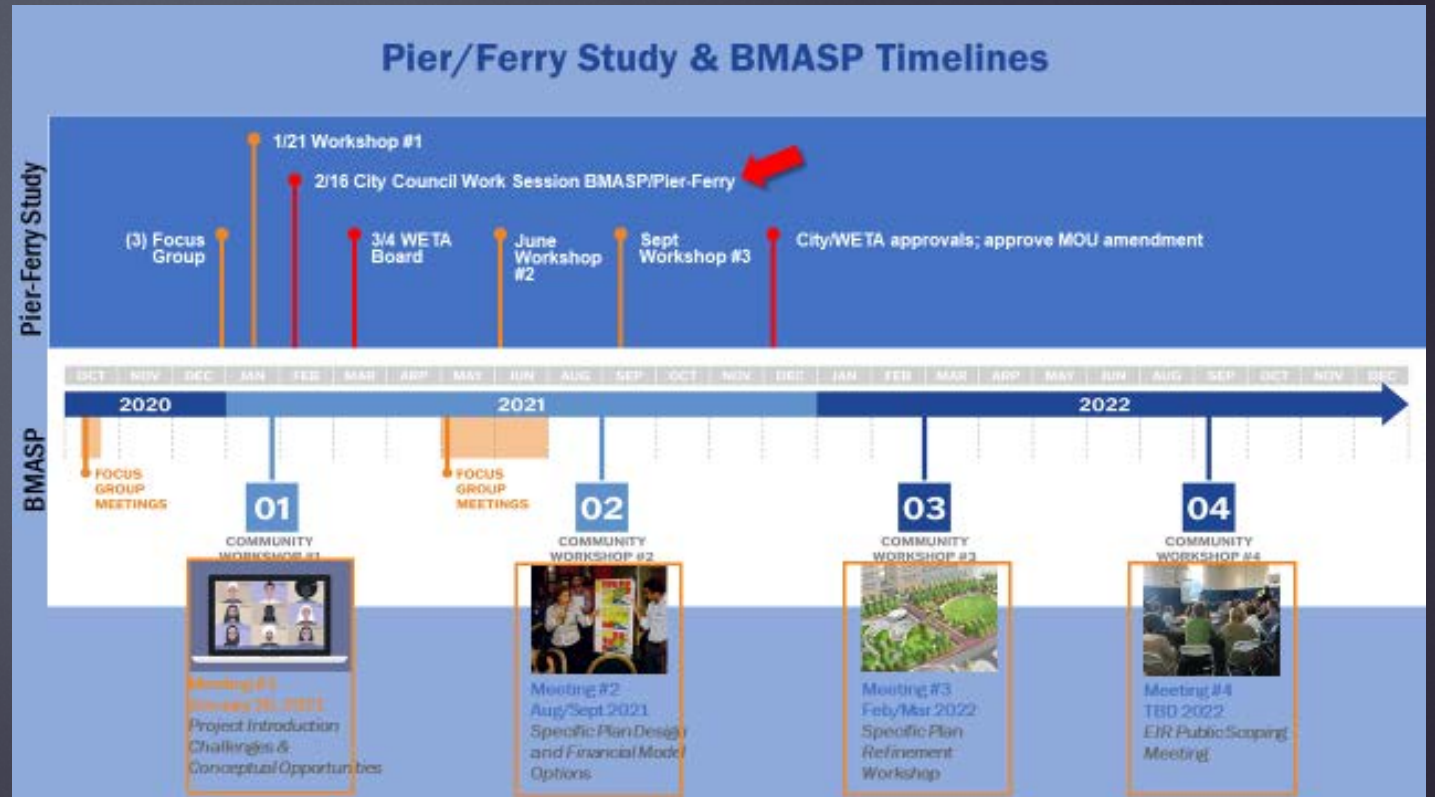
Waterfront Corp Yard Electrical and Beam Replacement

“Planning Only” Projects in Process

- ▶ Berkeley Marina Area Specific Plan (GF)
- ▶ Municipal Pier Structural Assessment/Ferry Feasibility Study (T1/Marina Fund/WETA)



Example B - Fish Hook



Construction Projects Bidding Waterfront

16

- ▶ University Ave, Spinnaker Way, Marina Blvd (T1, Streets, Double Tree)
- ▶ Marina Bike Lockers (20) (Grants/ GF/ Marina Fund)
- ▶ Finger Dock Replacement- Phase 3 (GF/ Marina Fund)



Construction Projects Bidding

▶ King School Park Play Equipment



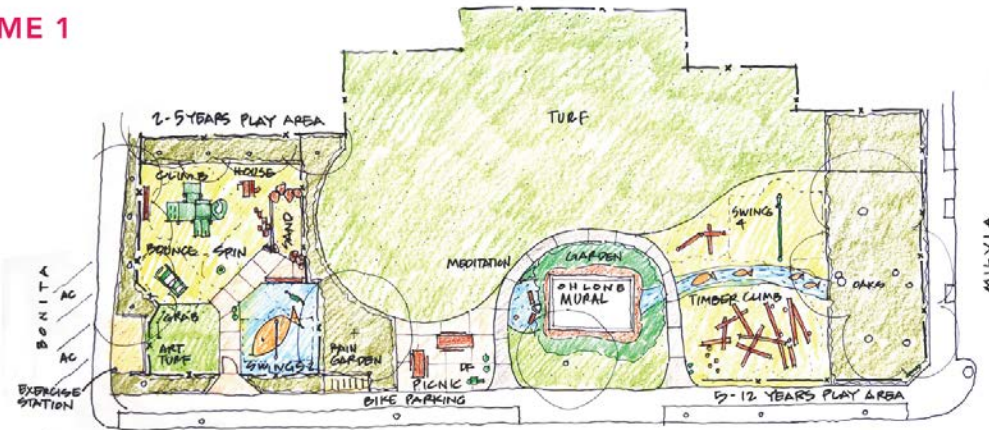
Projects in Design

18

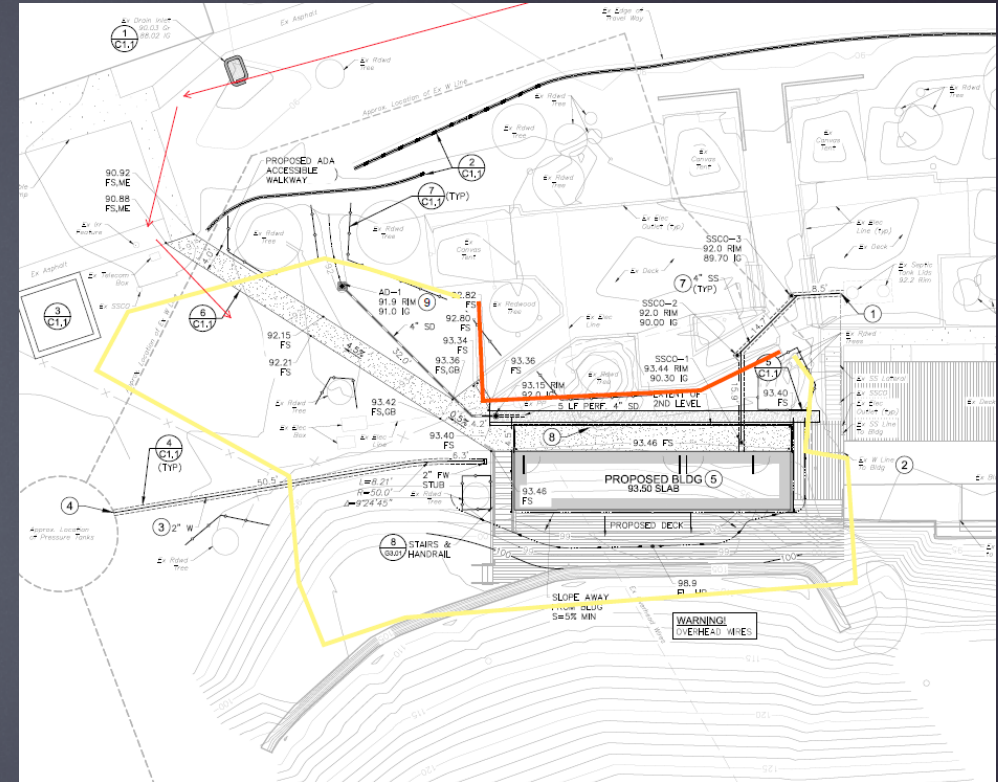
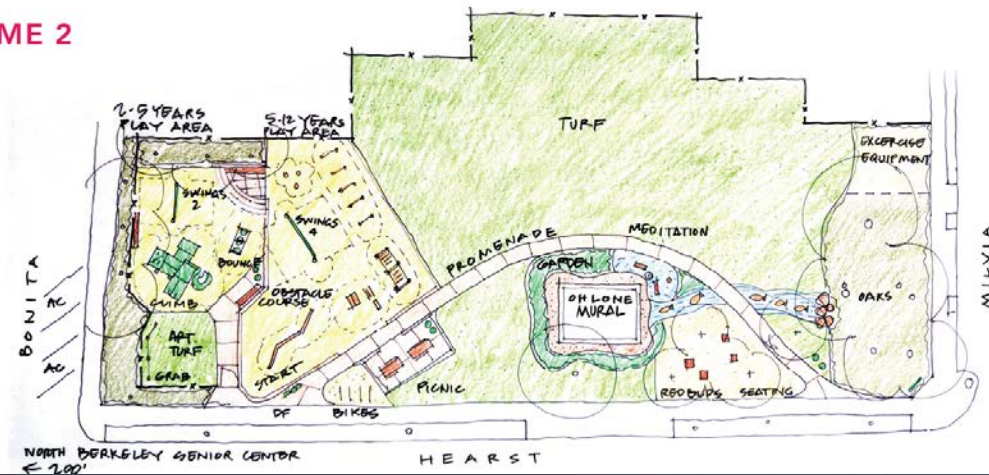
- ▶ Aquatic Park – Dock access parking and ADA:
In final design (**Parks Tax/Bayer**)
- ▶ Cazadero Camp – Jensen Dormitory: In final design (**Insurance**)
- ▶ Grove Park – Sports Field Renovation (**Parks Tax/ T1**)
- ▶ John Hinkel 2-12 Amphitheatre, Picnic and Play Areas:
In final design (**Parks Tax/ T1p2**)
- ▶ Ohlone Park (Milvia) 2-5 and 5-12 Play areas and Mural Garden:
In conceptual design (**Parks Tax/T1p2**)
- ▶ Waterfront: Marina - Misc. Pilings Project: In final design (**T1p2/Parks Tax**)
- ▶ Waterfront: Marina Marina O & K Electrical: In final design (**GF**)

Projects in Design

SCHEME 1



SCHEME 2



Cazadero Camp Dorm

Ohlone Park East Playground & Mural Garden Improvement

T1 P2 Funded Projects (not started)

20

- ▶ **Parks** – MLK Jr. Youth Services Center Renovation
- ▶ **Parks** – Willard Clubhouse and Restroom Replacement
- ▶ **Citywide** – African American Holistic Resource Center (new)
- ▶ **Parks** – Tom Bates Restroom and Community Space (new)
- ▶ **Parks** – Harrison Park Restroom Renovation
- ▶ **Parks** – Ohlone Park – Restroom (new)
- ▶ **Parks** – Ohlone Park Lighting
- ▶ **Parks** – Grove Park Play ages 2-5 & 5-12 Structures
- ▶ **Parks** – Aquatic Park Tide Tubes Clean Out: Soil Removal
- ▶ **Parks** – Civic Center Park – Turtle Garden
- ▶ **Pools** – King Pool Tile and Plaster Replacement
- ▶ **Camps** – Cazadero Camp Dining Hall Renovation & ADA Improvements
- ▶ **Waterfront** – K Dock Public Restroom Renovation
- ▶ **Waterfront** – Cesar Chavez Park – Public Restroom (new)
- ▶ **Waterfront** – D & E Dock Replacement (T1/DBAW Loan)



Grants in Process

- ▶ Grove Park Play Structure (Prop 68)
- ▶ Santa Fe ROW: Blake – Parker – New Park (Prop 68)
- ▶ Aquatic Park: (AA)
- ▶ MLK Junior Youth Services Center –Seismic (FEMA)
- ▶ Tree planting – West Berkeley (EEMP)



Santa Fe Right-of-Way
Conceptual Design

Thank you.

Questions?