

# Breakout Group Agenda

7:10 - 8:20

1. Introductions.

2. Review potential ferry/pier examples.

3. Question:

**What do you like/not like about the potential project?**

**Is there a preferred configuration or are there new ones possible?**

4. Review *Project Benefits and Location Criteria*.

**Comments?**

5. Question:

**Given the project criteria and considerations, any new insights or ideas?**



BERKELEY MARINA

UNIVERSITY AVE

SEA WALL DRIVE

RECREATIONAL & FERRY ACCESS PIER (± 475' LENGTH SHOWN)

SKATES

FERRY BOARDING FLOAT

FERRY TURNING BASIN

DETACHED BREAKWATER

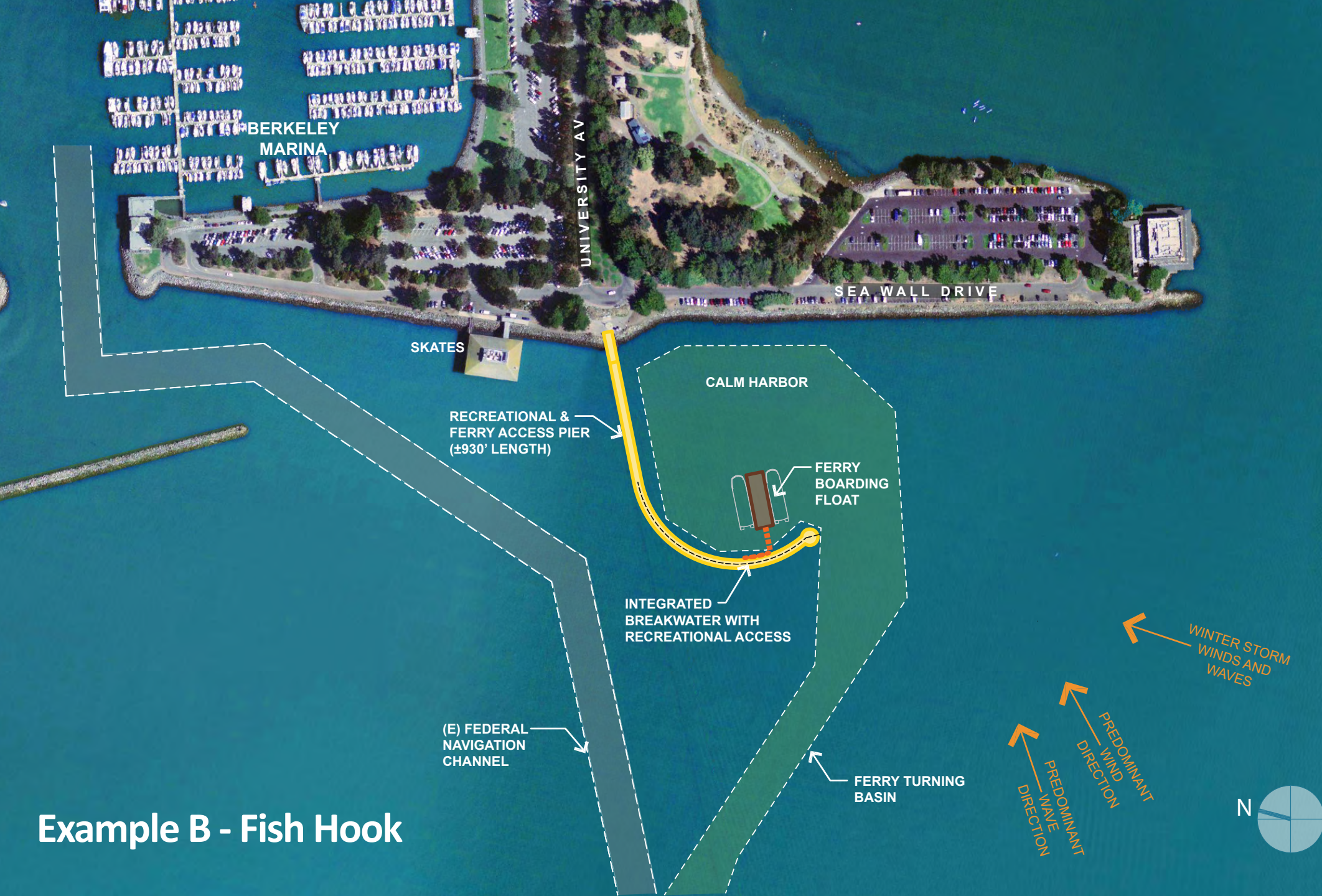
(E) FEDERAL NAVIGATION CHANNEL

WINTER STORM WINDS AND WAVES

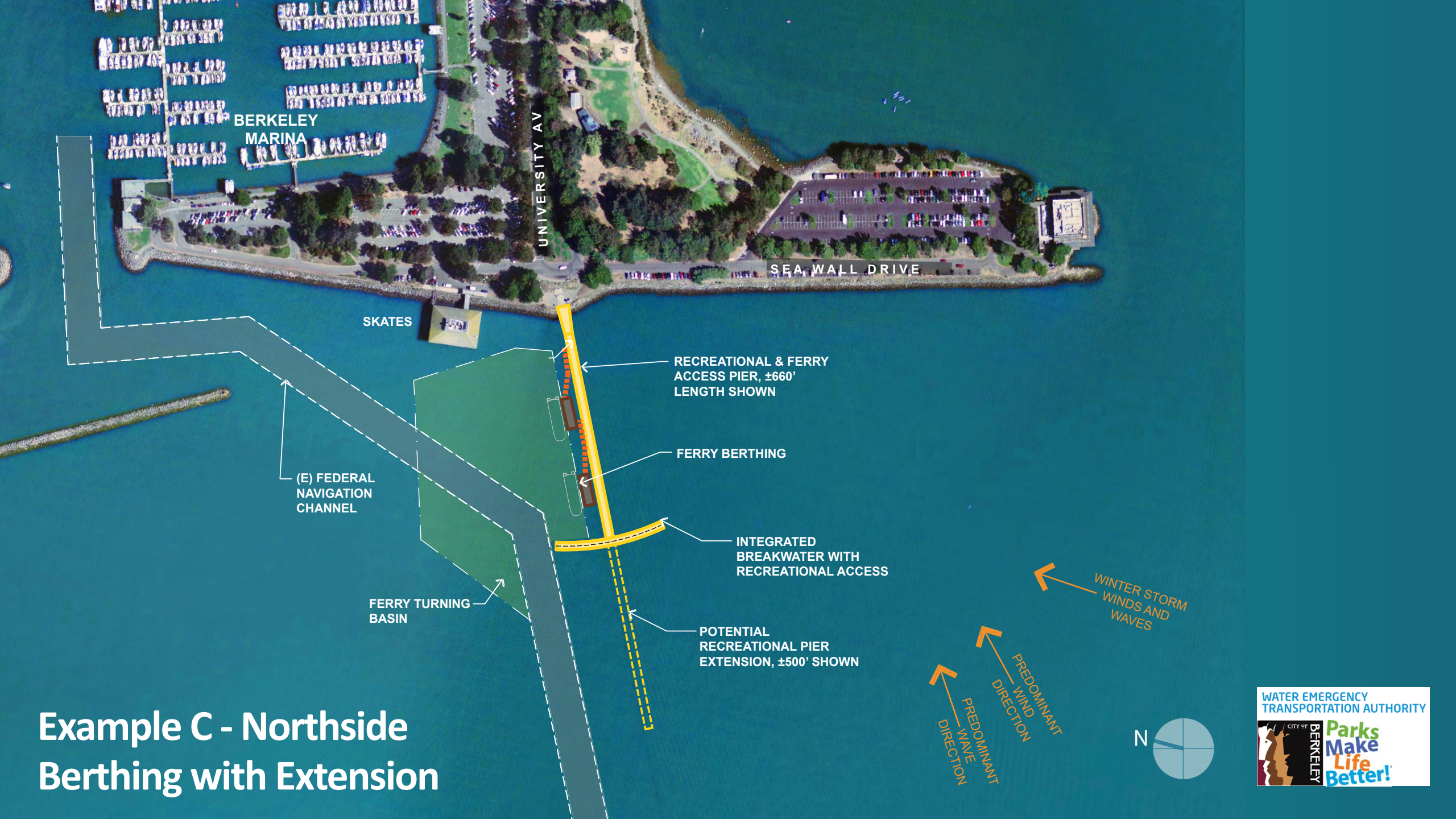
PREDOMINANT WIND DIRECTION  
PREDOMINANT WAVE DIRECTION



# Example A - Detached Breakwater



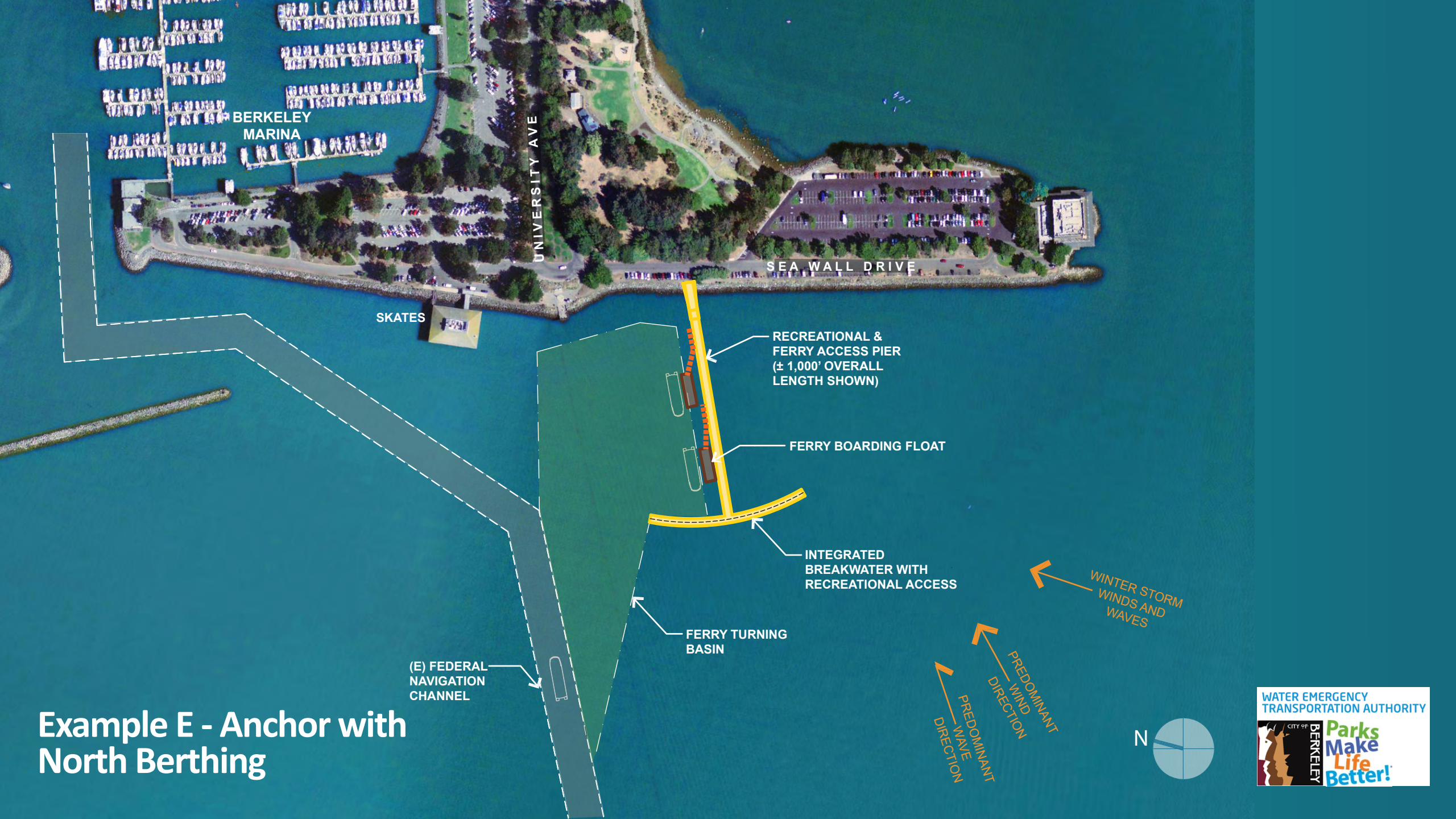
Example B - Fish Hook



# Example C - Northside Berthing with Extension



# Example D - Southside Berthing



# Example E - Anchor with North Berthing

SKATES

BERKELEY MARINA

UNIVERSITY AVE

SEA WALL DRIVE

RECREATIONAL & FERRY ACCESS PIER (± 1,000' OVERALL LENGTH SHOWN)

FERRY BOARDING FLOAT

INTEGRATED BREAKWATER WITH RECREATIONAL ACCESS

FERRY TURNING BASIN

(E) FEDERAL NAVIGATION CHANNEL

WINTER STORM WINDS AND WAVES

PREDOMINANT WIND DIRECTION

PREDOMINANT WAVE DIRECTION



WATER EMERGENCY TRANSPORTATION AUTHORITY





Explore potential parking on Marina.

High-quality bike connections via the Bay Trail extension.

Opportunity to improve bike/ped facilities; expand parking along University Ave.

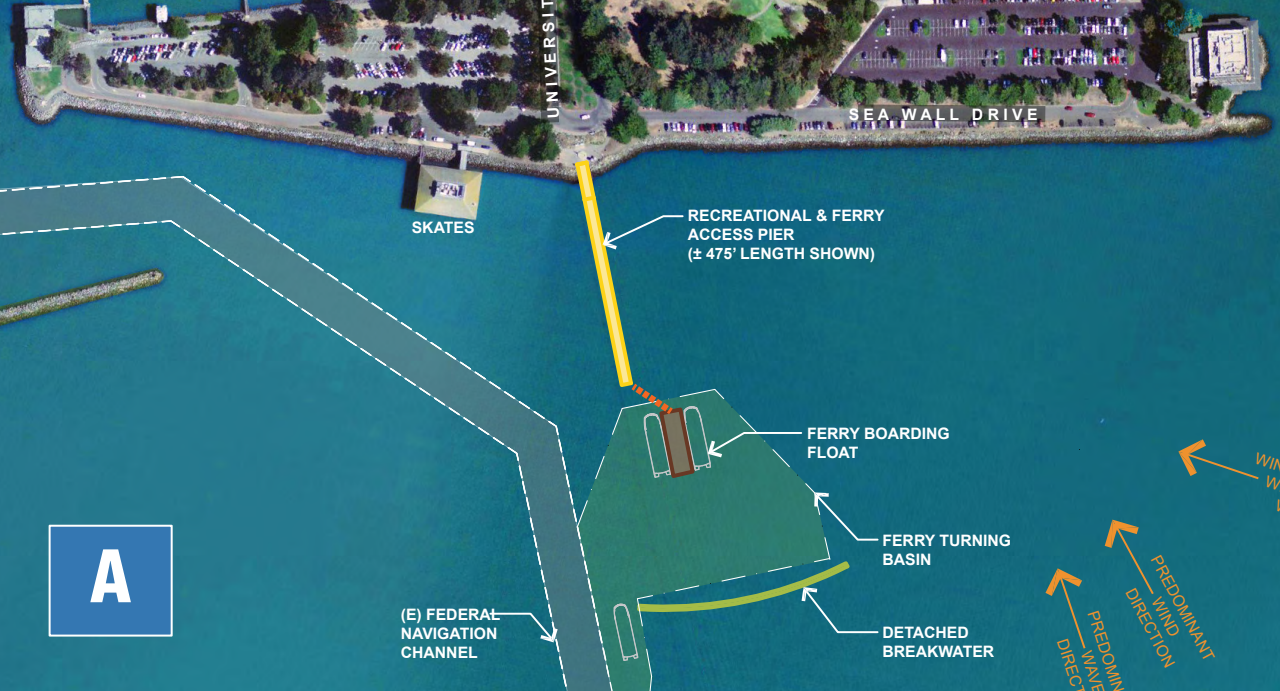
Potential bike lockers/racks, transit improvements, shared mobility services, and designated pick-up/drop-off area.

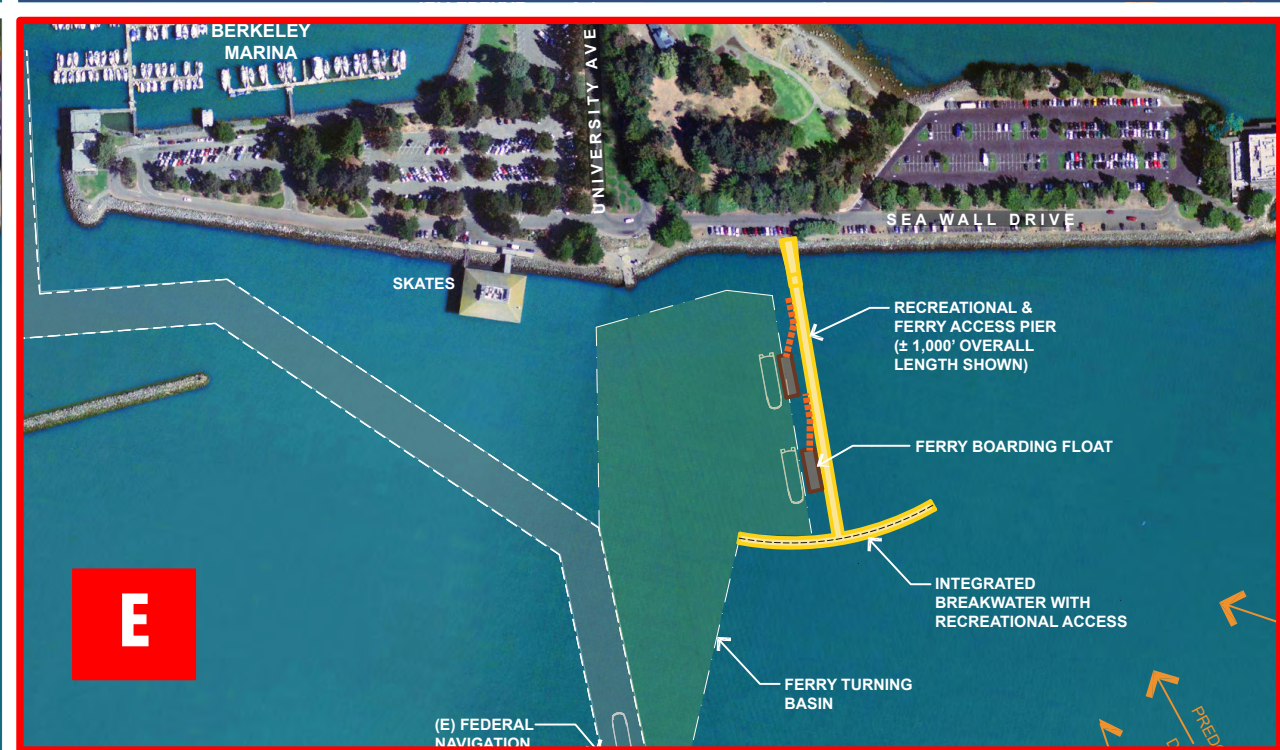
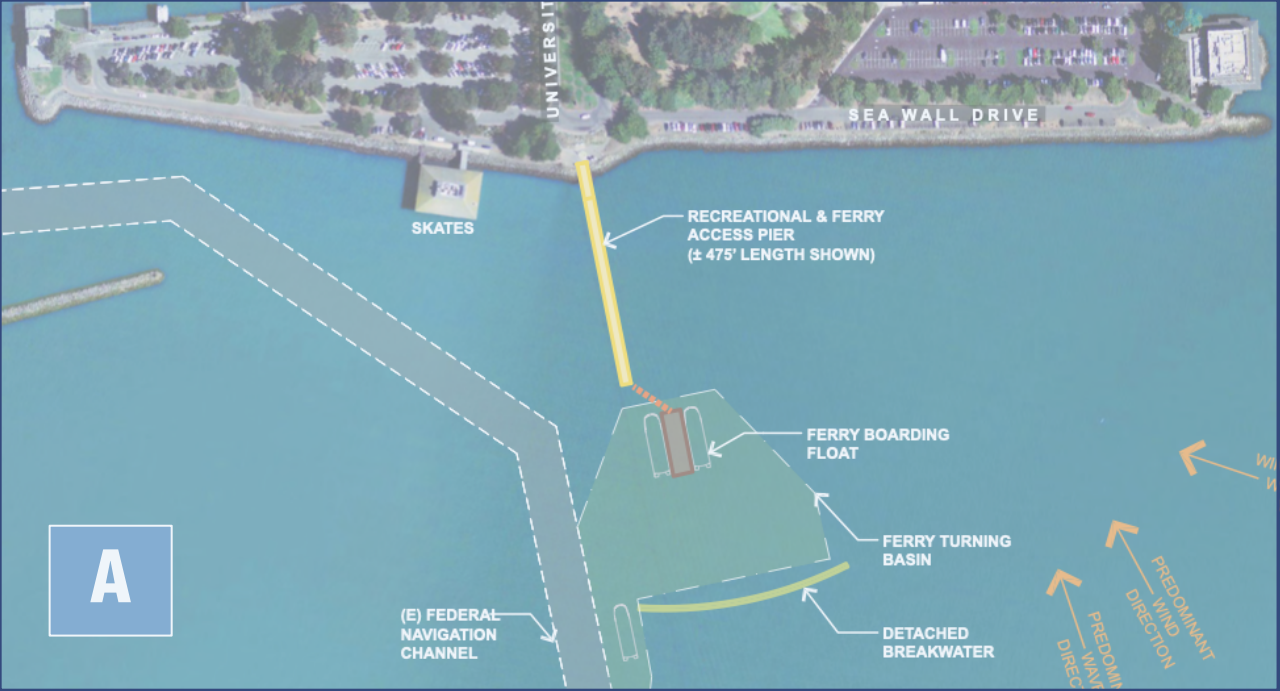
Opportunity to improve and expand parking along Seawall drive.

# Questions:

- What do you like/not like about the potential project?
- Is there a preferred configuration or are there new ones possible?







## Potential Project Benefits

- Economic benefits to Marina Fund
- Bay access / Pier restoration
- Recreation opportunities

- Alternative transportation mode
- 'Placemaking' opportunity
- Regional draw

## Suggested Criteria for Locating the Pier/Ferry

Recreational Amenities	Ferry Service	Visual	Implementation
<ul style="list-style-type: none"> <li>• Fishing access</li> </ul>	<ul style="list-style-type: none"> <li>• Boarding distance to drop-off</li> </ul>	<ul style="list-style-type: none"> <li>• Scenic quality</li> </ul>	<ul style="list-style-type: none"> <li>• Resilience to earthquake &amp; SLR</li> </ul>
<ul style="list-style-type: none"> <li>• Bay experience</li> </ul>	<ul style="list-style-type: none"> <li>• Limit pier use conflicts</li> </ul>	<ul style="list-style-type: none"> <li>• Iconic &amp; historic</li> </ul>	<ul style="list-style-type: none"> <li>• Dredging</li> </ul>
<ul style="list-style-type: none"> <li>• Adjacent waterside uses</li> </ul>	<ul style="list-style-type: none"> <li>• Limit water conflicts</li> </ul>		<ul style="list-style-type: none"> <li>• Environmental assessment</li> </ul>
<ul style="list-style-type: none"> <li>• Community destination</li> </ul>	<ul style="list-style-type: none"> <li>• Ferry berthing operations</li> </ul>		<ul style="list-style-type: none"> <li>• Construction cost</li> </ul>
	<ul style="list-style-type: none"> <li>• Safety and efficiency</li> </ul>		<ul style="list-style-type: none"> <li>• Constructability</li> </ul>

# Question:

- Given the project criteria and considerations, any new insights or ideas?