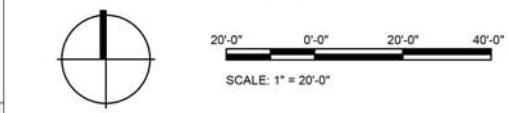


- | | | | |
|---------------------------------|--|--|--|
| 1 City Vehicles Only, Bollards | 6 Parallel Parking Stalls | 11 Beginner Asphalt Pumptrack | 16 Staging Area: Shade Structure, Bike Repair Station, Drinking Fountain, etc. |
| 2 Sewer Lift Station | 7 Vehicular Barrier with Entry Gate Every Three Stalls | 12 Intermediate / Advanced Asphalt Pumptrack | 17 Bio-retention Area |
| 3 Parking Area, May Be Expanded | 8 Split Rail Fence | 13 Asphalt / SDG Skills Trail | 18 Stormwater Dissipation Area |
| 4 Drop Off / Pick Up Stall | 9 Entry Point | 14 Concrete Trick Line | 19 Bench Seats |
| 5 ADA Parking Stalls | 10 ADA Circulation Path | 15 SDG Trials Area | |

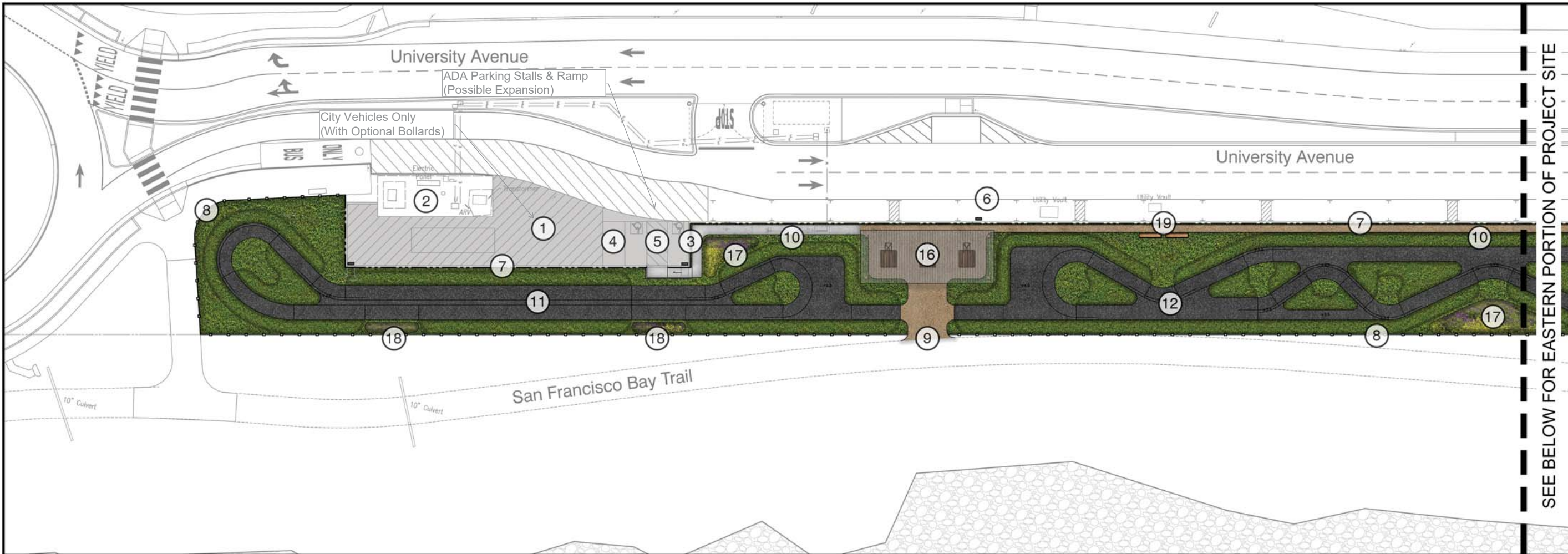


SEE ABOVE FOR WESTERN PORTION OF PROJECT SITE

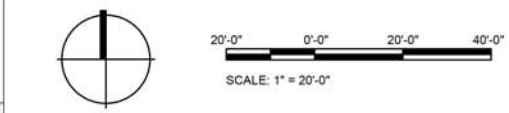
SEE BELOW FOR EASTERN PORTION OF PROJECT SITE

rm design group			
Wormhoudinc 849 Ave. Avenue, Suite 200, San Francisco, CA 94103 Tel: 415.426.8426 Fax: 415.426.8411			
PROJECT:	BERKELEY BIKEPARK BERKELEY, CA		
SHEET TITLE:	CONCEPT DESIGN #1		
SHEET NUMBER	BP-1.0		
ISSUE / REVISION	DATE	DRAWN BY	REVIEWED BY
001 CONCEPTUAL PLANS	8/25/2022	ZW	ZW
002 WORKSHOP # 2	9/29/2022	KM	ZW / JS

©WORMHOUDINC 2022



- | | | | |
|---------------------------------|--|--|--|
| 1 City Vehicles Only, Bollards | 6 Parallel Parking Stalls | 11 Beginner Asphalt Pumptrack | 16 Staging Area: Shade Structure, Bike Repair Station, Drinking Fountain, etc. |
| 2 Sewer Lift Station | 7 Vehicular Barrier with Entry Gate Every Three Stalls | 12 Intermediate / Advanced Asphalt Pumptrack | 17 Bio-retention Area |
| 3 Parking Area, May Be Expanded | 8 Split Rail Fence | 13 Asphalt / SDG Skills Trail | 18 Stormwater Dissipation Area |
| 4 Drop Off / Pick Up Stall | 9 Entry Point | 14 Concrete Trick Line | 19 Bench Seats |
| 5 ADA Parking Stalls | 10 ADA Circulation Path | 15 SDG Trials Area | |



SEE ABOVE FOR WESTERN PORTION OF PROJECT SITE

SEE BELOW FOR EASTERN PORTION OF PROJECT SITE

rm design group		
Wormhoudinc 849 Ave. Avenue, Suite 200, Santa Cruz, California 95060 USA Tel: 931-426-8424 Fax: 931-426-8411		
ISSUE / REVISION	DATE	DRAWN BY / REVIEWED BY
001 CONCEPTUAL PLANS	8/25/2022	ZW KM
002 WORKSHOP # 2	9/29/2022	ZW / JS KM

PROJECT:
BERKELEY BIKEPARK
BERKELEY, CA

SHEET TITLE:
CONCEPT DESIGN #2

SHEET NUMBER
BP-2.0