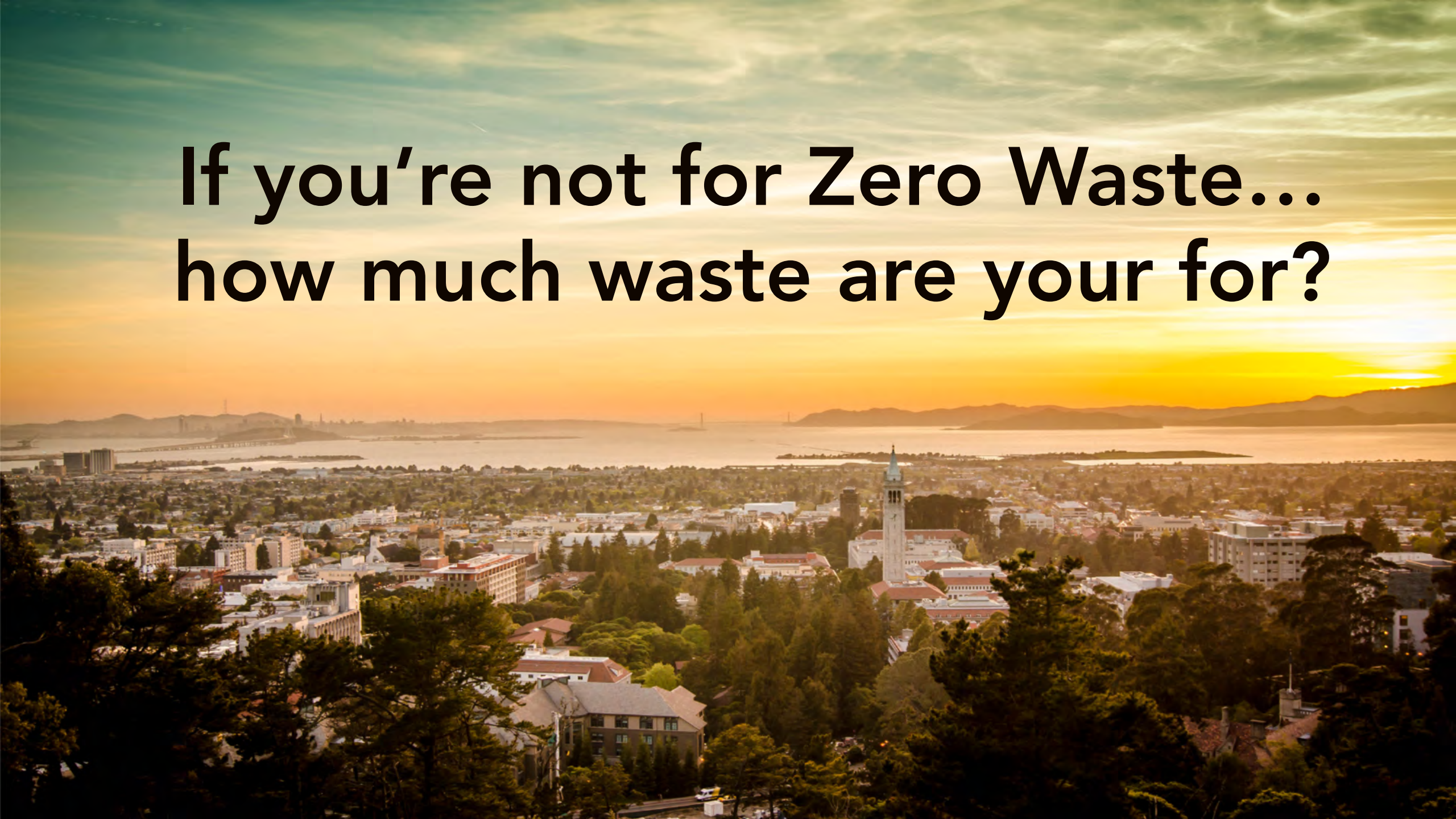


**If you're not for Zero Waste...
how much waste are you for?**

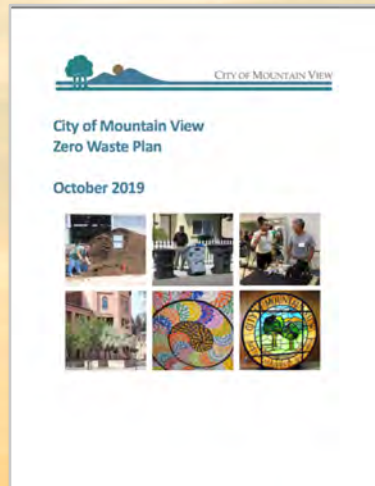
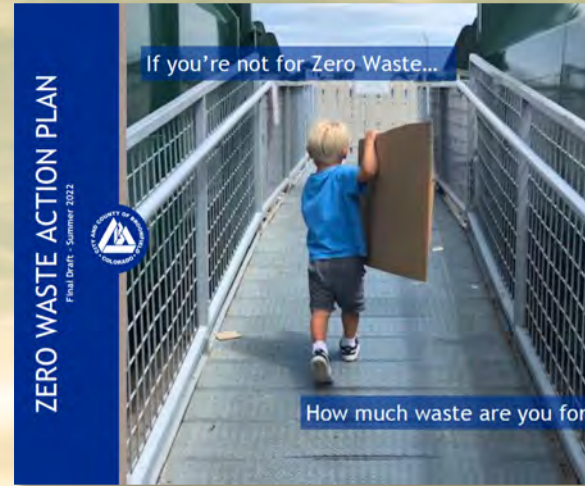


Zero Waste Strategic Plan

- Background
- Team
- Scope
- Schedule



Recent Relevant Work



Key Team Members



Ruth Abbe
Project Manager



Christienne de Tournay
Assistant Project Manager



Portia Sinnott
Materials Characterization



Gary Liss
Policy & Program Analysis



Kevin McCarthy
Facility Integration



Garth Schultz
Financial Analysis



Steven Sherman
Operations Analysis

Scope of Services

1. Review and Summarize Current Policies and Programs
2. Materials Composition Study
3. Review of the Zero Waste Division Operations
4. Outreach and Stakeholder Engagement
5. Transfer Station Feasibility Study Integration
6. New or Revised Zero Waste Programs, Policies and/or Ordinances
7. Zero Waste Program Outreach and Education Program Recommendations
8. Zero Waste Division Staffing
9. Develop Financial Analysis Showing Implementation Costs
10. Draft and Final Zero Waste Strategic Plan

1. Review and Summarize Current Policies and Programs

- Current material flows and diversion rates for reuse, recycling, organics recovery, and landfilling
- A summary of the existing policies, programs, and infrastructure
- Roles and responsibilities of the state, StopWaste, City, City contractors, and private operators

FACT SHEET: Solid Waste Facilities - The System Infrastructure

Fact Sheet: Solid Waste Facilities - The System Infrastructure

COUNTING DOWN TO ZERO WASTE PLAN
A Solid Waste Integrated Resources Plan (SWIRP)
City of Los Angeles Department of Public Works
Bureau of Sanitation

Establishing a Baseline Year for Planning the Future Infrastructure



In February 2006 the City Council adopted the Recovering Energy Natural Resources and Economic Benefit from Waste for LA (RENEW LA) Plan, which is the 20-year blueprint plan that will help reduce the City's reliance on landfills by maximizing recycling and reuse, and converting much of the solid waste that currently goes to landfills into clean energy and/or valuable raw materials. An understanding of the private and public solid waste infrastructure and services currently used within the City of Los Angeles (City) is essential for planning future infrastructure development. The City consequently hired a consultant¹ to conduct interviews with transfer stations, landfills, and green waste processing facilities that accept waste from within the City, as well as incorporate data from the California Integrated Waste Management Board (CIWMB), the City's Bureau of Sanitation (BOS), and from earlier reports including the City of Los Angeles Year 2000 AB939 Report (2001) and the City of Los Angeles Waste Characterization and Quantification Study Year 2000 (2002). The tonnages of the various materials described in this fact sheet are based on year 2006 data.

In 2006, approximately 3.65 million tons of solid waste was generated in the City. The quantities associated with the three sub-streams are as follows:

Source	Solid Waste
Single-family residential (BOS)	963,000
Commercial/multifamily	2,388,000
Self-haul/other	299,000
Total	3,650,000

Overview of the City's Solid Waste Generators

In order to better understand the generation and ultimate disposal of solid waste generated in the City, we can classify the solid waste according to who generated the waste and who brought it to the disposal facility.² The three major sub-streams of the waste are single-family residential, commercial/multifamily, and self-haul/other.

- Single-family residential is defined as solid waste collected by the Bureau of Sanitation (BOS) from single-family residences and up to four multi-family units. It typically arrives at the solid waste facility in BOS operated collection vehicles (e.g., automated side loader trucks).
- Commercial/multifamily is defined as waste collected by a permitted private waste-hauling company from businesses, institutions, public venues, and multi-family buildings³ such as apartments and condominiums. It typically arrives at the solid waste facility in private/commercially owned collection vehicles (e.g., front loaders) or in roll-off containers or compactor units.
- Self-haul/other is defined as all waste that is brought to solid waste facilities by the resident or business that generated it. This includes all waste other than that brought to the facility by the BOS or by commercial haulers whose primary business is hauling waste.

In 2006, approximately 3.65 million tons of solid waste was generated in the City.⁴ The quantities associated with the three sub-streams are as follows:

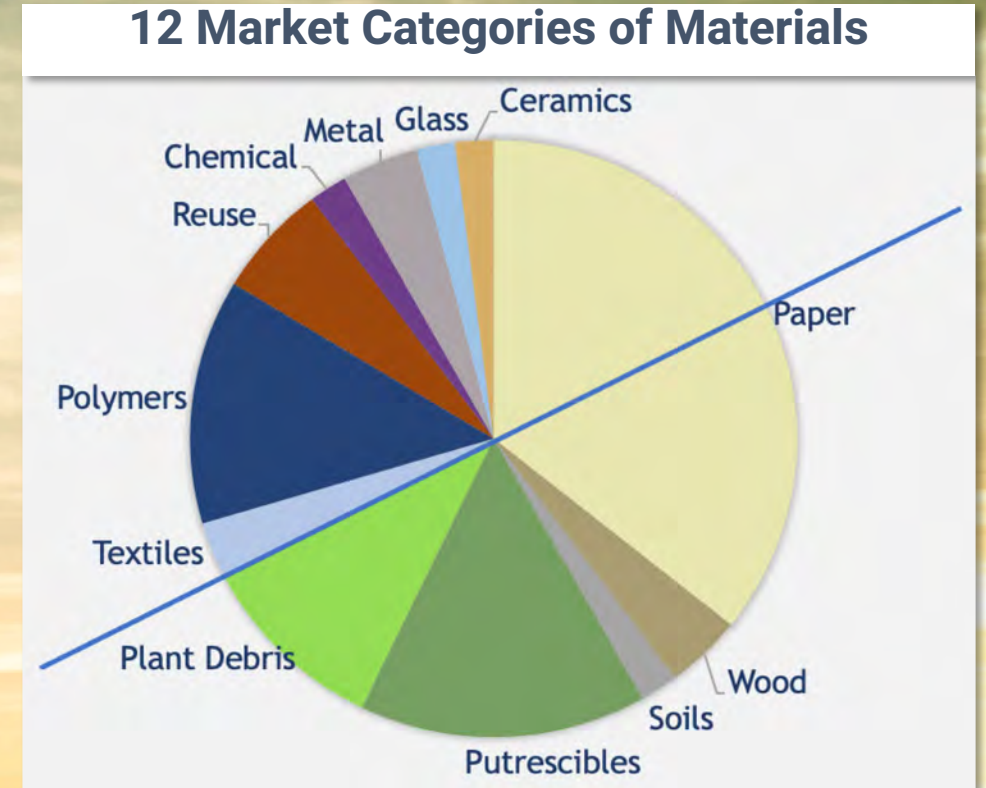
¹ Cascadia Consulting conducted a study, Existing Waste Flows and Facilities, for BOS in 2006 to identify waste flows and facilities for the City of Los Angeles.
² To understand how the waste flows, it is tracked by who brought it to the disposal facility (single-family, commercial/multifamily, and self-haul/other). For purposes of program planning and diversion modeling, self-haul/other tons are reallocated based on where the material is generated (single-family, multifamily, commercial and construction and demolition debris sites).
³ Permitted haulers serve multifamily complexes with five or more dwelling units, while BOS serves multifamily complexes with four or fewer dwelling units.
⁴ The BOS provided tonnages for the single-family residential sub-stream. Estimates for the disposed waste from commercial/multifamily and self-haul/other sub-streams were developed based on total 2006 tonnage figures from the California Integrated Waste Management Board (CIWMB) Disposal Reporting System and on commercial per employee and multifamily per household disposal rates calculated in the City of Los Angeles Waste Characterization and Quantification Study Year 2000 (2002).

ZERO WASTE PLAN
The City's Integrated Resource Plan

Sample fact sheet prepared by our team for the City of Los Angeles Zero Waste Plan

2. Materials Composition Study

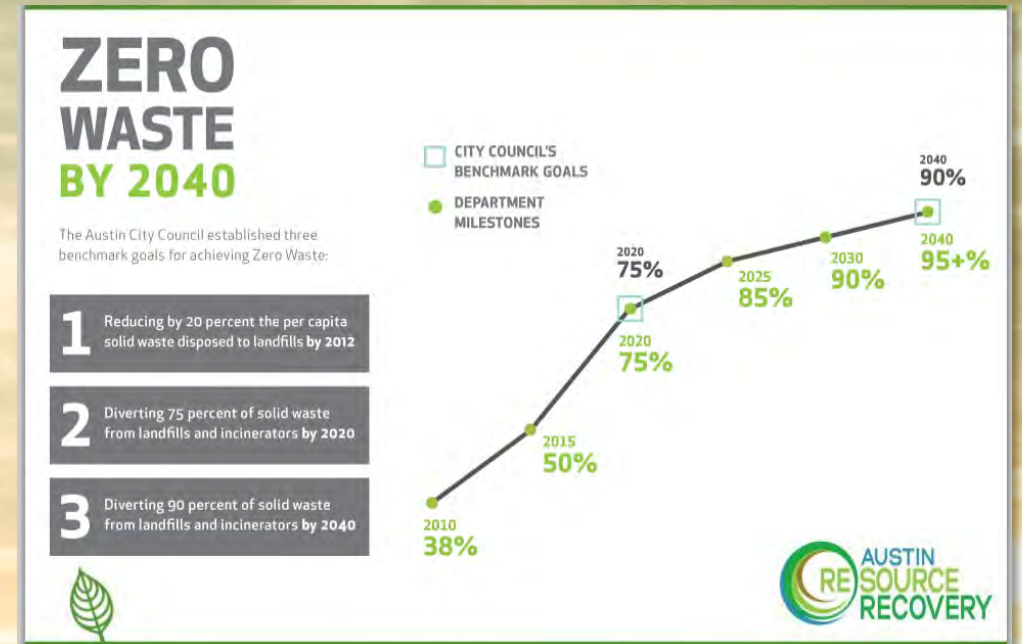
- Refuse materials delivered by both City curbside collection and third-party vehicles
- Green/food and plant debris materials delivered by both City curbside collection and third-party vehicles
- Construction and demolition materials by both City curbside collection and third-party vehicles
- Miscellaneous materials currently accepted for reuse or recycling



Codified by Urban Ore and Richard Anthony Associates
Note that 50% of discarded materials are compostable

3. Review of the Zero Waste Division Operations

- System analysis summary
- Service opportunities summary
- Refined list of the Zero Waste initiatives for further consideration by the community



Benchmark goals prepared by our team for the City of Austin Zero Waste Plan

4. Outreach and Stakeholder Engagement

- 20 Listening Sessions
- 3 Online Town Halls
- 3 Public Workshops to be held across the City
- 3 Interviews or Meetings with City staff (not directly involved in the project)
- 3 Meetings with the Zero Waste Commission
- City Council study session or 3 Interviews or Meetings with City Council staff



Public Workshops in Broomfield

5. Transfer Station Feasibility Study Integration

- High-level project description and preliminary costs and schedule for implementation of the facility redevelopment
- Documentation of proposed changes to the conceptual design resulting from the Zero Waste planning process or environmental review milestones



6. New or Expanded Zero Waste Programs, Policies and/or Ordinances

- Completed Zero Waste Planning Checklist
- 20-30 Strategy Impact Analyses (2-3 pages each) for Zero Waste initiatives
- Presentation materials for community outreach



Los Angeles Solid Waste Integrated Waste Management Plan

7. Zero Waste Program Outreach and Education Program Recommendations

- Current education, outreach and technical assistance program summary
- Strategy Impact Analyses (2-3 pages) summarizing recommend program enhancements, staffing levels and costs



Door-to-Door Outreach in Oakland

8. Zero Waste Division Staffing

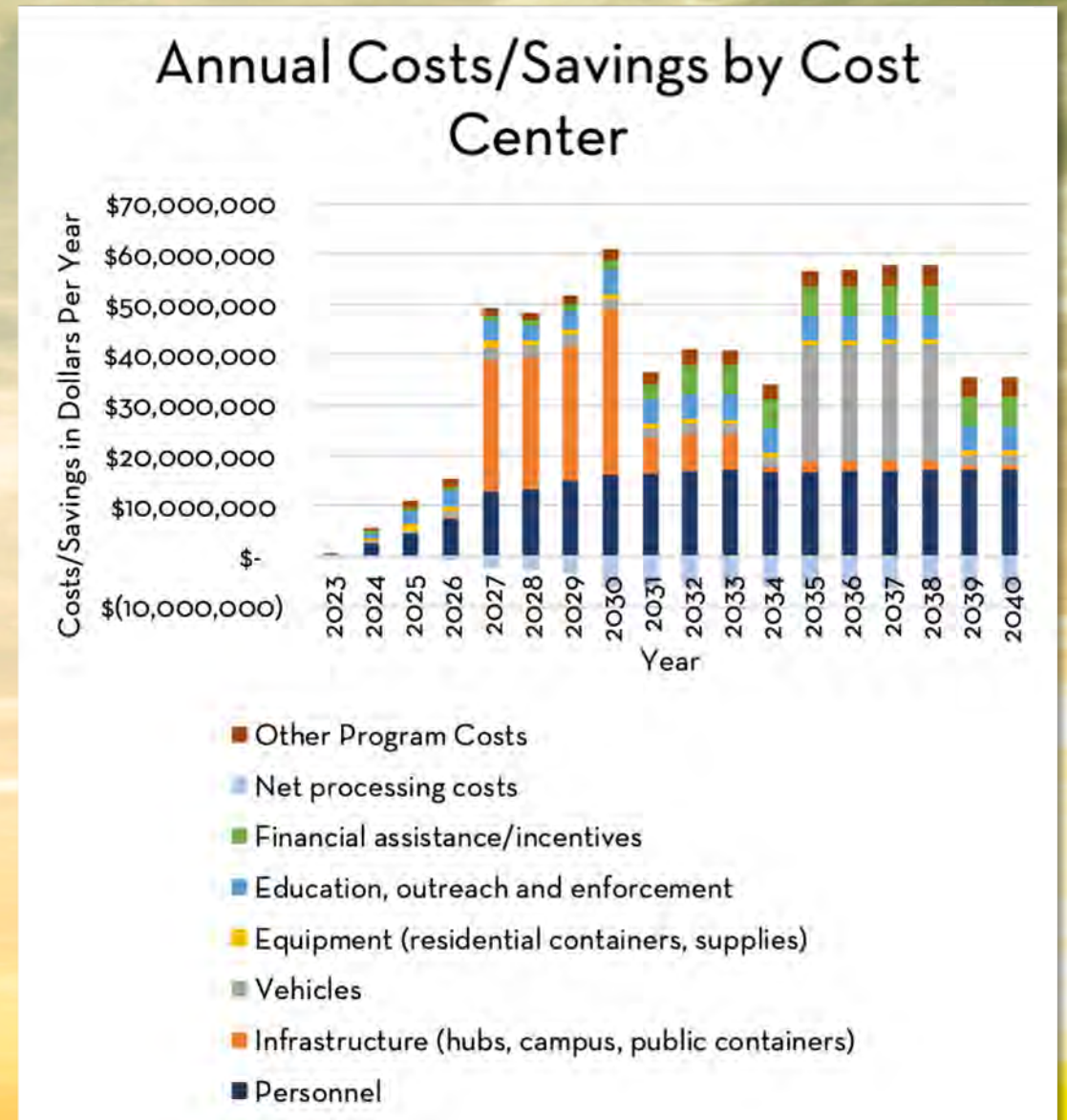
- Description of Zero Waste Division current staffing levels, functions and responsibilities
- Summary of benchmark survey results documenting current staffing levels and costs for similar operations



Lid Flipping in Sunnyvale

9. Develop Financial Analysis Showing Implementation Costs

- Information request on current rate structure information and prior rate structure analysis
- Summary of Zero Waste Strategic Plan implementation costs
- Evaluation of rate impacts and rate structure recommendations



10. Draft and Final Zero Waste Strategic Plan

- Outline
- Table of Contents, Figures and Tables
- Executive Summary
- Draft Plan, Final Draft Plan
- Presentation Slides



Schedule

	Task	February	March	April	May	June	July	August	September	October	November	December	January	February	March	April	May	June	
	Project Management Meetings	★ ★	★ ★	★ ★	★ ★	★ ★	★ ★	★ ★	★ ★	★ ★	★ ★	★ ★	★ ★	★ ★	★ ★	★ ★	★ ★	★ ★	
1	Review Current Policies & Programs		▲																
2	Materials Composition Study						▲							▲					
3	Operations Review																		
4	Outreach & Stakeholder Engagement	Stakeholder interviews/Workshops			★	★	★	★	★	★					★		★	★	★
5	Facility Feasibility Study Integration																		
6	Policy & Program Analysis																		
7	Education Program Recommendations																		
8	Staffing Analysis																		
9	Financial Analysis																		
10	Draft Zero Waste Strategic Plan																		
11	Final Zero Waste Strategic Plan																		

Meetings ★
Deliverables ▲