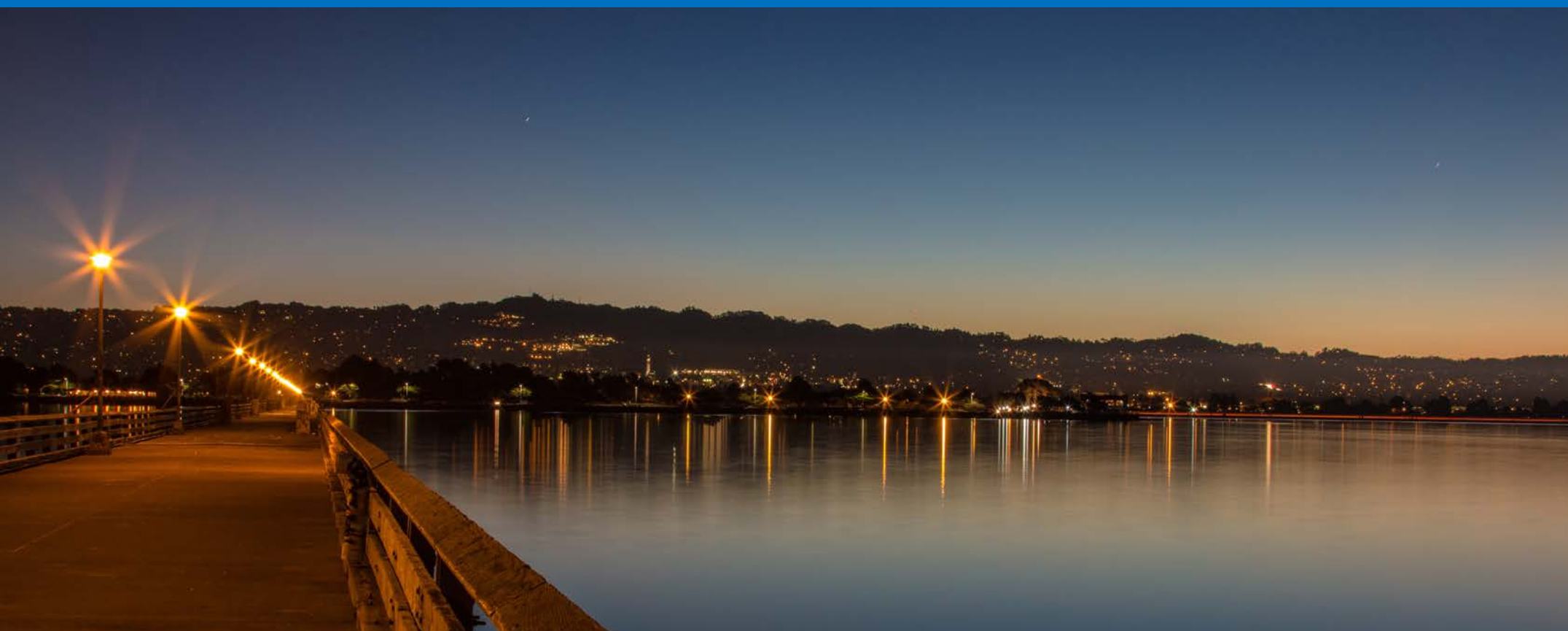


Berkeley Municipal Pier Structural Assessment & WETA Ferry Facility Planning Study

Focus Group Meeting – Wednesday, January 7, 2021



WATER EMERGENCY
TRANSPORTATION AUTHORITY



Agenda

6:30 **Introductions**

6:40 **Project Background**

- City/WETA Partnership
- WETA Overview
- Pier Assessment
- Feasibility Plan for Potential Ferry & Pier
- Integration of Ferry/Pier Study & BMASP

7:05 **Q&A**

7:10 **Focused Discussion Topics**

8:25 **Next Steps, Adjourn**

WATER EMERGENCY
TRANSPORTATION AUTHORITY



Meeting Objective

Hear your ideas about how a potential multi-use pier could best serve the Berkeley community and Marina users.



Topics

- Your thoughts on restoring the Berkeley Pier.
- Ideas to consider in pier and ferry service planning.
- How you might use a potential ferry service.

Project Team

City of Berkeley – Parks, Recreation & Waterfront

Scott Ferris
Director

Nelson Lam, PE
Supervising Civil Engineer
Project Manager

Ali Endress
Waterfront Manager

Roger Miller
Senior Management Analyst

Water Emergency Transportation Authority

Kevin Connolly
Manager, Planning &
Development

Michael Gougherty
Project Manager

Taylor Rutsch
Planner

Consultant Team

Peter Bluhon
Public Engagement
Bluhon Group (GHD Team)

Craig Lewis, S.E.
Maritime & Coastal Group, **GHD**
Senior Project Manager

Supporting Policy & Studies

City of Berkeley

Policy:

- ***City General Plan Updates (2001)***
- ***Climate Action Plan (2012)***: sustainable transit
- ***Local Hazard Mitigation Plan (2019)***: high priority action for emergency response

Studies:

- ***Berkeley Municipal Pier Structural Assessment***
- ***Small-scale Ferry Transportation Feasibility Study on Waterside Improvements***

Water Emergency Transportation Authority

Policy:

- ***System Expansion Policy (2015)***: sets standards and process for new ferry services.
- ***Strategic Plan (2016)***: identifies Berkeley as a 'Near-term Expansion Project.'
- ***Emergency Response Plan (2016)***: sets WETA's role in provision of emergency water transportation.
- ***Plan Bay Area 2050 (pending)***: includes Berkeley Ferry Service as Regionally Significant Project.



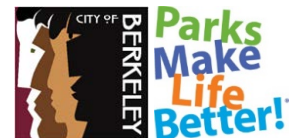
**WATER EMERGENCY
TRANSPORTATION AUTHORITY**

City/WETA Partnership Vision

WETA and the City envision a pier with ferry service and recreational access that would deliver synergistic benefits for the Berkeley Waterfront, and local and regional transportation and public safety.



WATER EMERGENCY
TRANSPORTATION AUTHORITY



City of Berkeley + WETA MOU (2019)

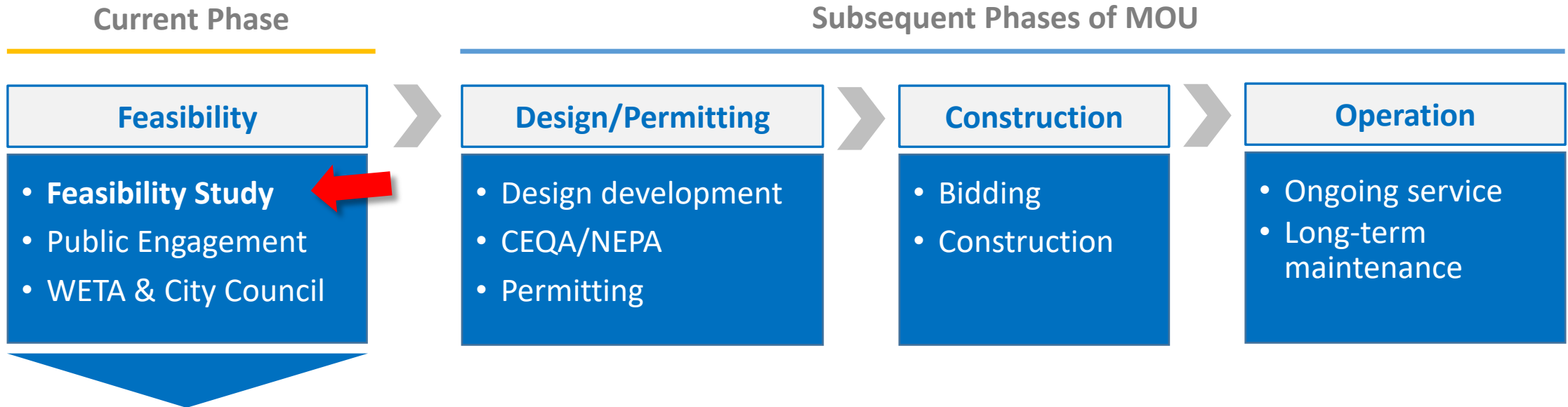
Goal

WETA and the City will study the feasibility of creating a multi-use pier for new ferry service and recreational public access.

Objectives

- ✓ **Determine most viable solution to rehabilitate existing or build new pier.**
- ✓ **Develop a concept plan for parking, transit access, and recreation.**
- ✓ **Invite the Berkeley community to participate in the planning process.**

MOU Phases



Approved Preferred
Conceptual Alternative

*Note:
MOU allows for terminating
partnership at any phase
upon mutual agreement.*

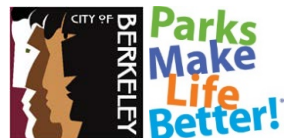
San Francisco Bay Area

Water Emergency Transportation Authority

- 5 Routes, 11 terminals, 17 vessels
- 3M Passenger Trips/Year
- 12,500 Passenger Trips/Weekday

- \$48M Annual Operating Budget – FY 19/20
- 55% Farebox Recovery Systemwide
- \$61M Annual Capital Budget – FY 19/20

WATER EMERGENCY
TRANSPORTATION AUTHORITY



WETA Route Map



ROUTE MAP

MORE INFO:
SANFRANCISCOBAYFERRY.COM



ROUTES AND SCHEDULES

Weekday and Weekend Service:

- Vallejo — San Francisco
- Alameda & Oakland — San Francisco

Weekday Commute Service:

- South San Francisco — Alameda & Oakland
- Harbor Bay — San Francisco
- Richmond — San Francisco

Special Service:

- Select off-peak and weekend trips to Pier 41 San Francisco from Vallejo, Alameda & Oakland
- Select connections to Mare Island from Vallejo — San Francisco route
- Seasonal service to the Giants at Oracle Park from Vallejo, Alameda & Oakland
- Seasonal service to the Warriors at Chase Center from Alameda & Oakland

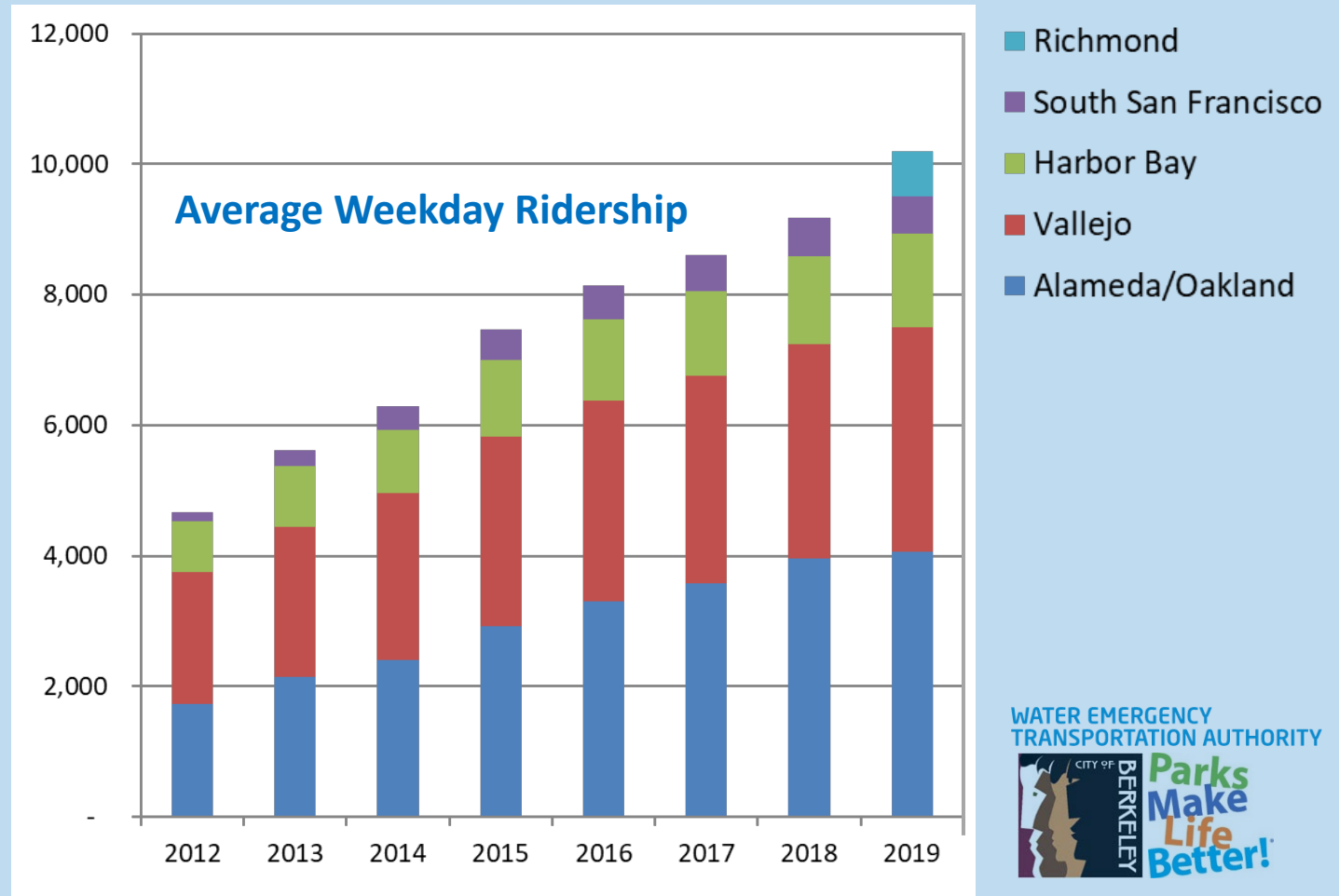
THE BEST WAY TO
CROSS THE BAY.

WATER EMERGENCY
TRANSPORTATION AUTHORITY

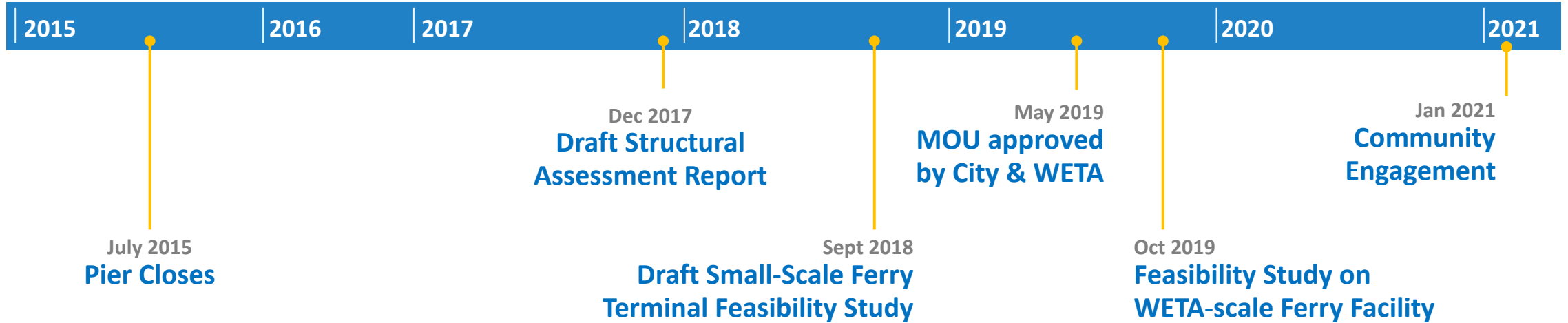


WETA System Profile

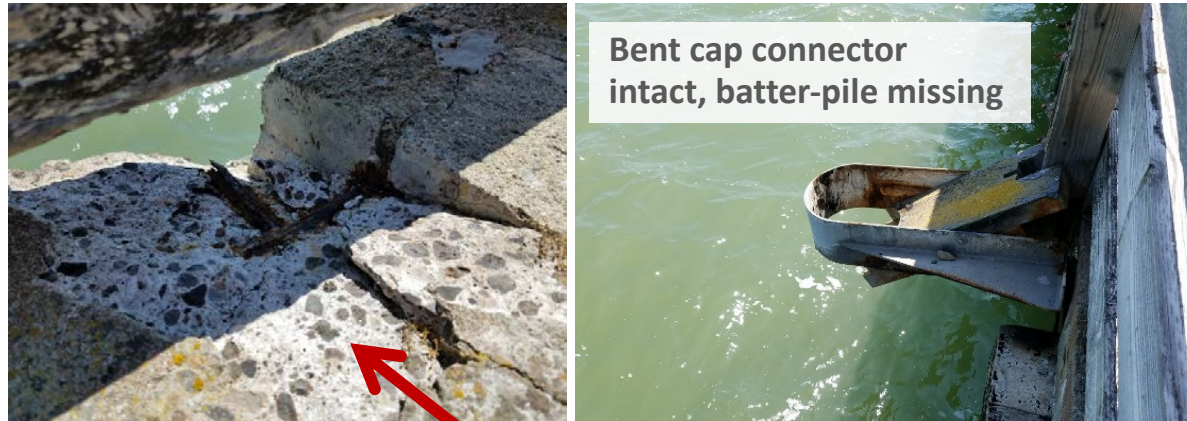
- Five routes
- 12,240 weekday boardings (July 2019)
- 82% riders in peak periods
- Ridership up 11% in 2020
- Ridership up 100%+ since 2012



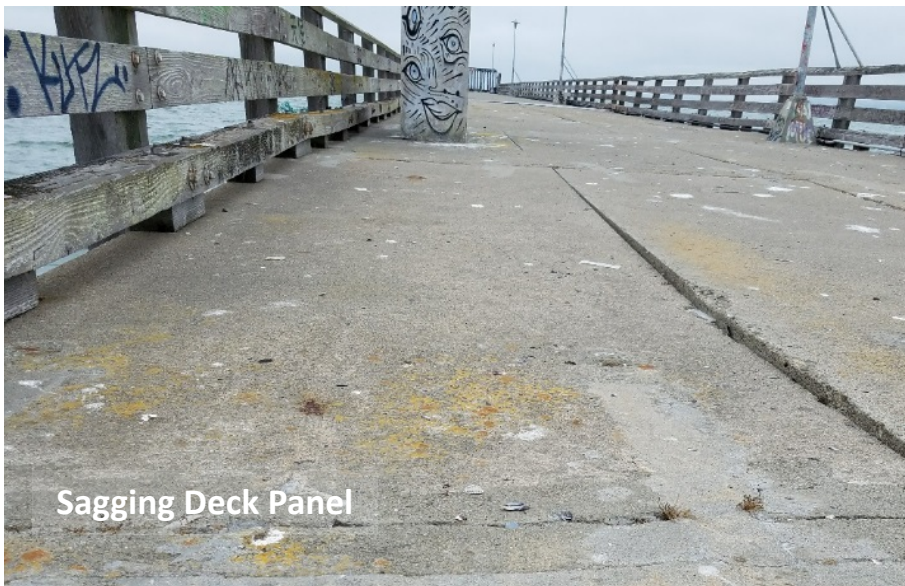
Pier Structural Assessment — Project History



Pier Structural Assessment – Field Documentation



Pier Structural Assessment – Field Documentation



Draft Structural Condition Assessment

Pier inadequate for present-day design basis loadings:

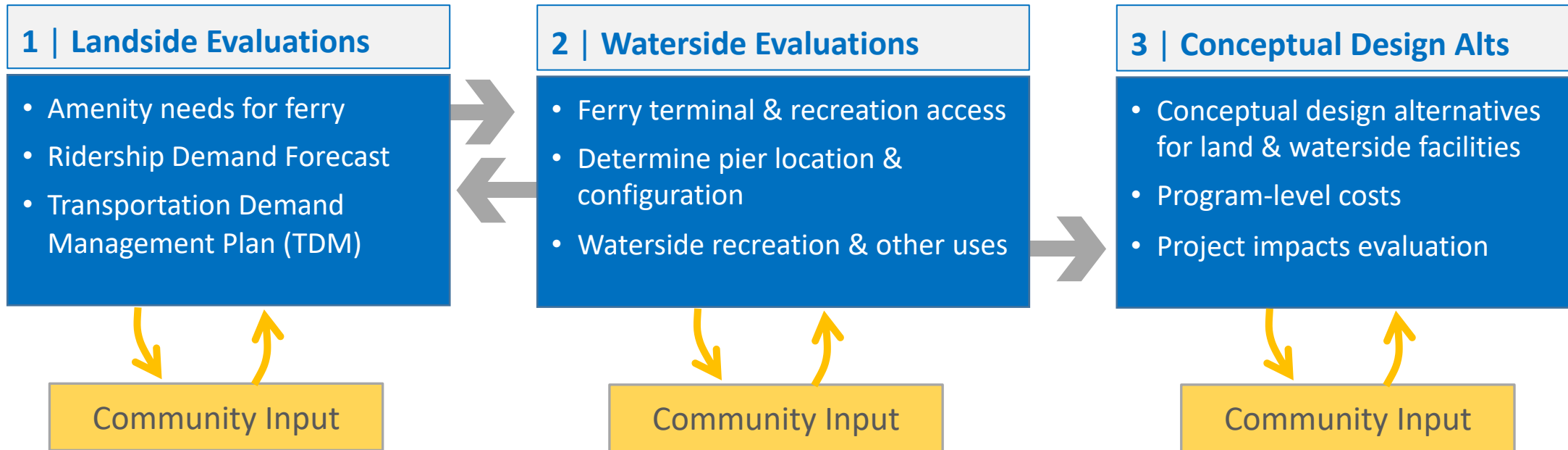
- ✓ **Deck Panel:** Serious/Critical
- ✓ **Timber-Battered Pile:** Critical
- ✓ **Bent Caps:** Fair - Serviceable
- ✓ **Piles:** Fair - Poor

Table 3-3: Summary of Condition Ratings per Component

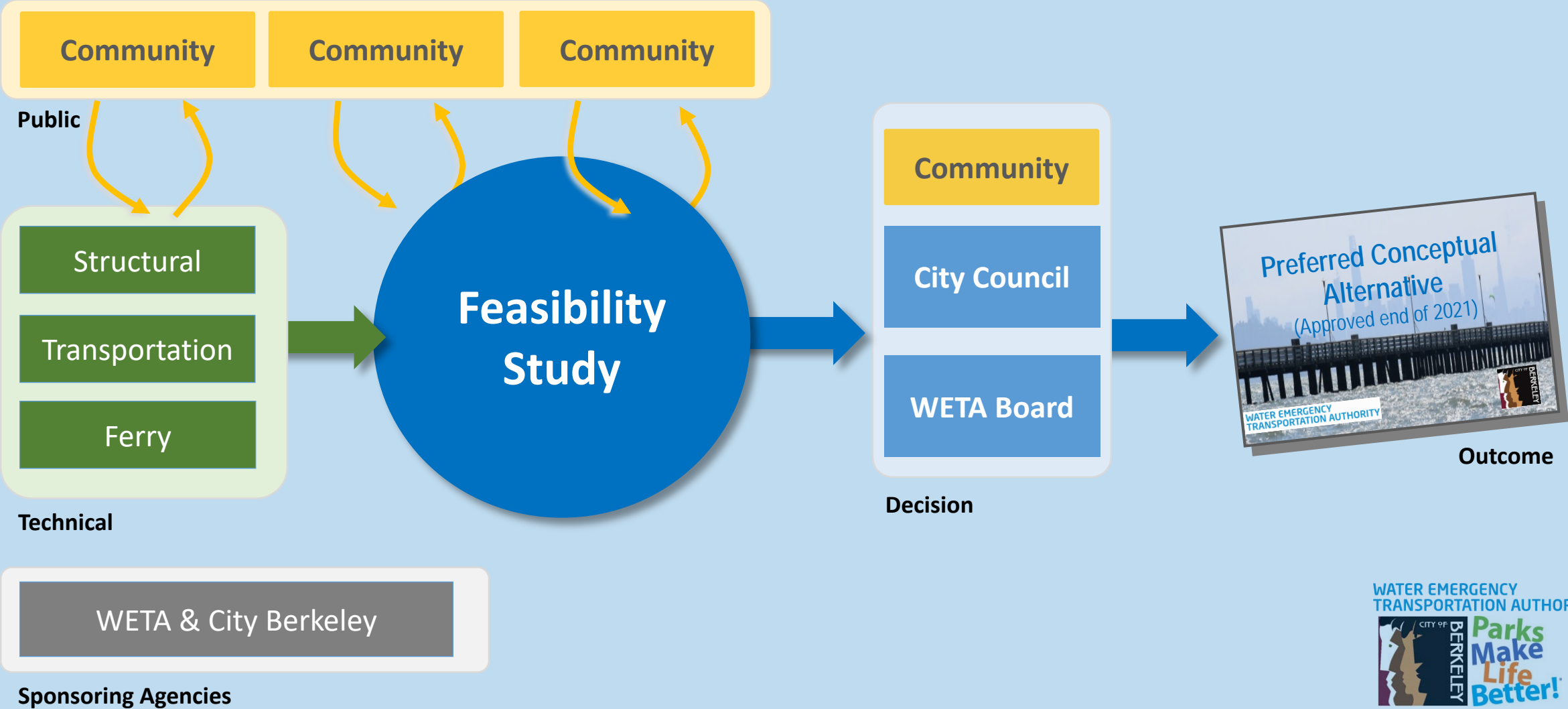
Rating		Piles	Bent Caps	Panels
6	Good	8%	10%	6%
5	Satisfactory	26%	0%	0%
4	Fair	42%	61%	10%
3	Poor	17%	24%	17%
2	Serious	7%	6%	12%
1	Critical	0%	0%	53%

Ratings based on *American Society of Civil Engineers Waterfront Facilities Inspection and Assessment Manual*

Ferry Feasibility Study — Key Topics



Inputs & Decision Process



Berkeley Marina Area Specific Plan Goals

Vision & policies to guide development & preservation in the Marina.

Specific Plan Goals

✓ Achieve Financial Sustainability

- Keep Marina Fund operational.
- Develop viable financial model.

✓ Support Community Needs

- Marina: slips, business, clubs, etc.
- Recreation & environmental stewardship.

✓ Address Infrastructure

- Prioritize capital projects.
- Identify funding sources.

✓ Adapt to Climate Change

- Assess SLR vulnerability.
- Identify mitigation and adaptation.

BMASP and Pier/Ferry Study are coordinated & integrated.

WATER EMERGENCY
TRANSPORTATION AUTHORITY



Financial Challenge & Opportunity

History

- Underinvestment
- Low fees, safety concerns
- Deteriorating infrastructure

Recent Conditions

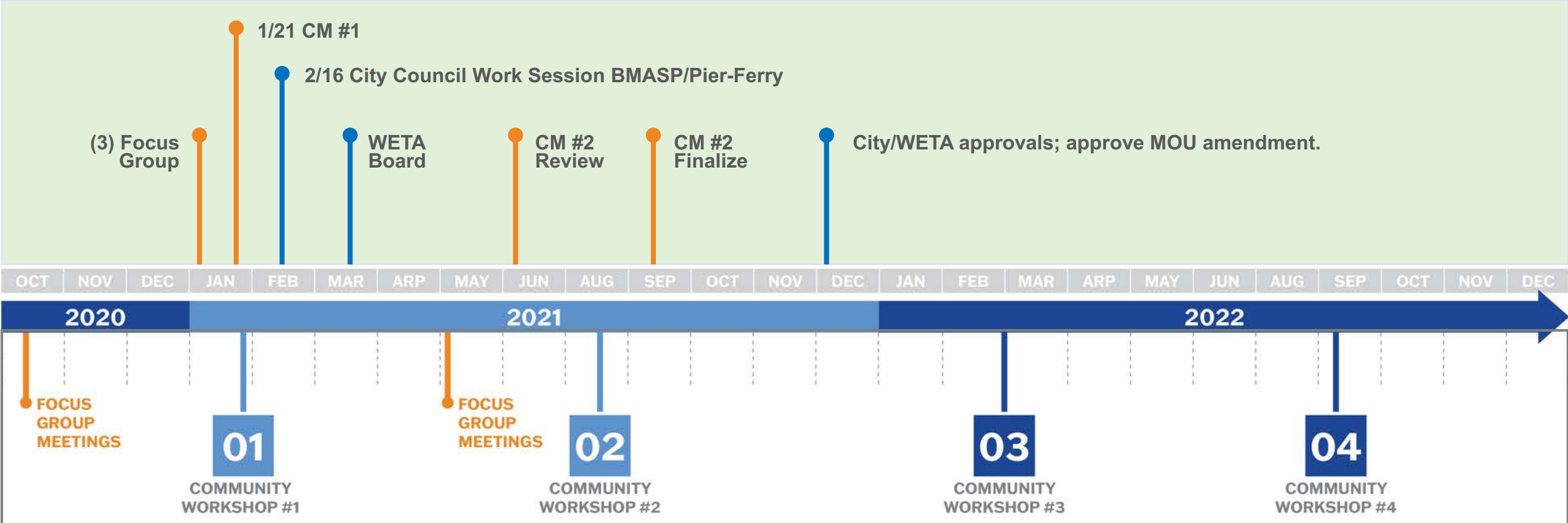
- Marina Fund revenue down
- Unfunded infrastructure needs by \$100M

Opportunities

- Council support
- BMASP initiated
- City/WETA Partnership

Pier/Ferry Tentative Public Engagement Timeline

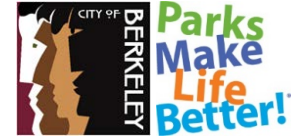
Pier-Ferry Study



Q&A on Presentation



WATER EMERGENCY
TRANSPORTATION AUTHORITY



Topic 1

Share your favorite memory with the former Berkeley Pier.

Are there former pier uses you'd like to see re-created. Any new uses do you envision?



WATER EMERGENCY
TRANSPORTATION AUTHORITY



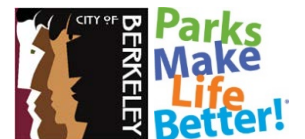
Topic 2

For **water-based recreation**:
what uses, needs, and patterns of use
should be considered in a new multi-use
pier design?

Are there **land-based recreation uses** or
needs to consider such as recreation,
economic, or environmental?



WATER EMERGENCY
TRANSPORTATION AUTHORITY

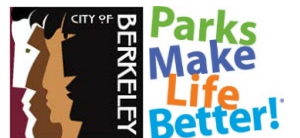


Topic 3

Are there any **physical** considerations to incorporate into the multi-use pier?



WATER EMERGENCY
TRANSPORTATION AUTHORITY

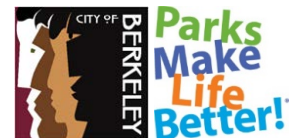


Topic 4

How might a multi-use recreational pier and public ferry fit into the **broader context** of the Berkeley Waterfront?



WATER EMERGENCY
TRANSPORTATION AUTHORITY



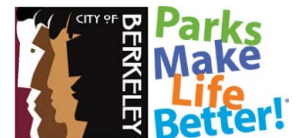
Topic 5

How would you and others access a potential future ferry?

What destinations in the Bay would you wish to access?



WATER EMERGENCY
TRANSPORTATION AUTHORITY

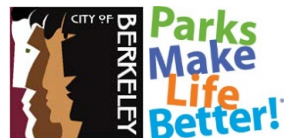


Topic 6

What **challenges and opportunities** do you foresee for potential restoration of the Pier for recreation and ferry access?



WATER EMERGENCY
TRANSPORTATION AUTHORITY



Next Steps

- ✓ Send contact info to BMASP@CityofBerkeley.info include “Pier/Ferry Mailing List” in subject line.
- ✓ Pier/Ferry Project webpage to be deployed
- ✓ Online Questionnaire to for Community Meeting #1 questions
- ✓ Community Meeting #1 6:30pm – 8:30pm, January 21, 2020)
Zoom: <https://zoom.us/j/93212728437>



Questions?

Contact:

Nelson Lam, P.E.

Supervising Civil Engineer

Department of Parks, Recreation and Waterfront

NeLam@CityofBerkeley.info

(510) 981-6395