

Parking-Related City Council Referrals

Planning Commission
05/01/2019



Green Affordable Housing Package (GAHP) Referral

- Investigate ways to reduce barriers to affordable housing production
- 1. Designate units and funding for affordable housing by prioritizing housing over parking
- 2. Remove structural barriers to the creation of housing

City-Wide Green Development Requirement Referral

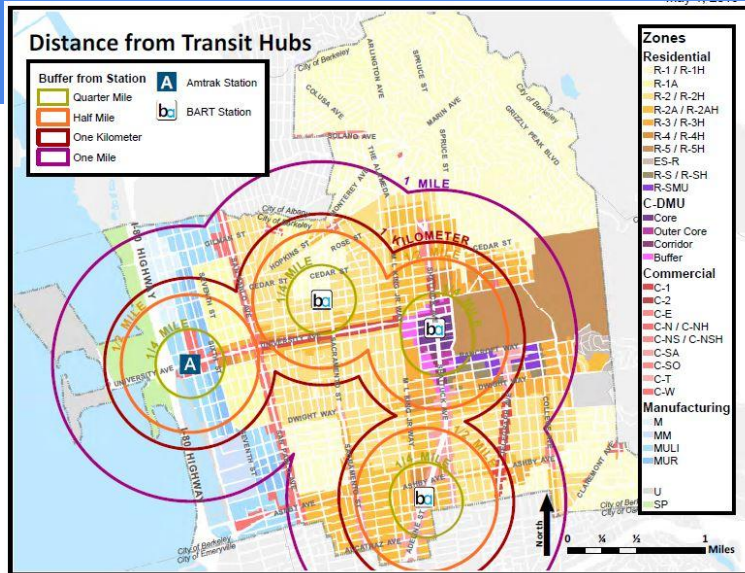
- Apply C-DMU's Green Building and Transportation Demand Management regulations to projects of 75 or more units in Commercial zones throughout the city
- Related policies
 - Modify Bicycle Parking Regulations
 - Vehicle Sharing Spaces
 - Residential Preferential Parking Permits
 - Unbundled Parking
 - Transportation Benefits

Background

- Planning Commission has recommended reductions to off street car parking requirements recently
 - Small Businesses
 - Car-Free Housing Overlay in R-S
- PC has expressed interest in a more holistic approach to parking reform
- Suggested timeline
 - Research
 - Community Outreach
 - Analysis
 - Recommendations

Existing Conditions

Off-Street Car Parking Requirement



- Lower density housing in low density districts
 - 1 space per unit
- High density districts: R-S, R-SMU, C-T, C-DMU
- Table X shows that recently passed **State Regulations** affect car parking
 - **Reduce or eliminate any local parking requirements when within a half mile of a transit corridor/hub**
- Here is a map that shows the distance from transit hubs...

On-Street Car Parking

- Managed by Transportation Division
- More vehicle registration further from transit corridors
- Residential Preferential Parking Program
 - 16 Residential Zones
 - 3 Annual Permits per Address
 - Not available if the developer waives off-street parking requirements due to proximity to transit
- On-Street Parking Survey Fall 2019

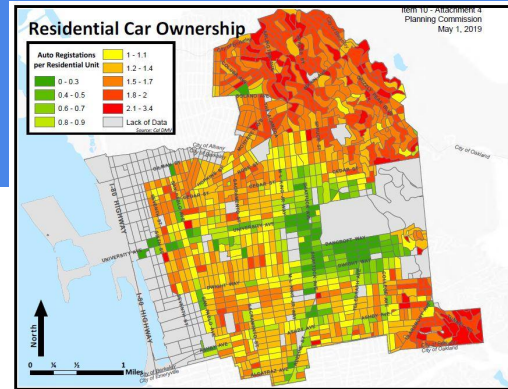


Table 2: Average Number of RPP Permits Per Address Per Zoning District

Zoning District	Total Permits Issued (2018)	Unique Addresses	Average Number of Permits Per Address
C-1	1030	494	2
C-DMU Outer	555	306	2
R-1	167	132	1
R-2	4834	1930	3
R-2A	5747	2486	2
R-3H	463	269	2

Recently Entitled Projects

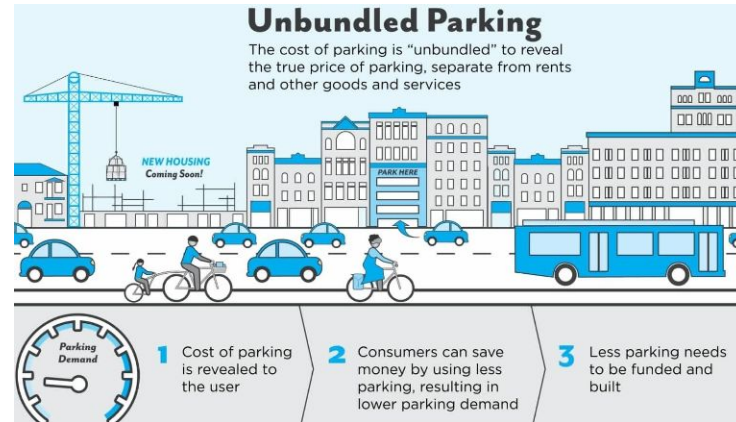
- Automobile Parking
 - Majority of projects provided the minimum amount of parking
 - Variance findings can be difficult to make
 - Little parking demand for transit rich areas
- Bike Parking
 - Many large projects provided ample bike parking
 - Berkeley Bicycle Plan 2017
 - Incorporated into the ZORP Project
 - Encourages Alternative Modes and Transportation Demand Management



Best Practices

Best Practices

- Transportation Service Fee
 - Already codified
 - Not being collected
 - Updated Nexus Study
- Transportation Demand Management
 - C-DMU
 - San Francisco, Emeryville, Sunnyvale
 - GreenTRIP Certification
 - AC Transit EZ Pass Program
- Unbundled Parking
 - C-DMU
 - Oakland, Emeryville, San Diego



Next Steps

Internal Stakeholders

- Planning Staff
- Parking Reform Group
- Land Use Planning
- Transportation Division
- Office of Economic Development
- Office of Energy and Sustainable Development
- Office of Emergency Services
- Fire Department
- Community Environmental Advisory Commission

External Stakeholders

- Residents
- Neighborhood Groups
- Employers
- Developers
- Students
- Employees
- Community-based organizations
- Non Profits
- Transit Agencies
- Other?

Referral Requests

GAHP

- Reduce/eliminate parking requirements for housing that...
 - **Offers TDM measures, car sharing or shared mobility programs**
 - Serves populations with low car ownership
 - Is in Transit intensive locations
 - Has new residential units near transit hubs
- **Implement parking maximums**

CGDR

- Require C-DMU's Transportation Demand Management measures for projects 75 units or more in all commercial districts
- Impose Standards on
 - Bike Parking
 - Vehicle Sharing Spaces
 - Residential Parking Permits
 - **Off street parking regulations**
 - **Transportation Benefits**
- **Conduct a financial feasibility of proposed requirements on the development of housing and affordable housing**

Questions, Considerations and Next Steps

- Questions
- Discuss and Provide Feedback
- Request Additional Information
- Help Identify Stakeholders for Future Outreach and Engagement