

All Home - who we are

All Home is a Bay Area organization advancing regional solutions that disrupt the cycle of poverty and homelessness, redress the disparities in outcomes as a result of race, and create more economic mobility opportunities for extremely low-income (ELI) individuals and families within the Bay Area.

We are working across regions, sectors, and silos to advance coordinated, innovative service delivery and build coalition-supported momentum to challenge the long-standing systems that perpetuate homelessness.

Why is regionalism important?

- The lack of affordable housing and increasing homelessness, as a result, is a regional problem that no one city or county can solve on its own.
- Regionalism works – e.g., public health orders were effective because Bay Area counties acted together and at the same time.
- Current practices are already crossing city and county borders

City of Berkeley fact sheet

1,018

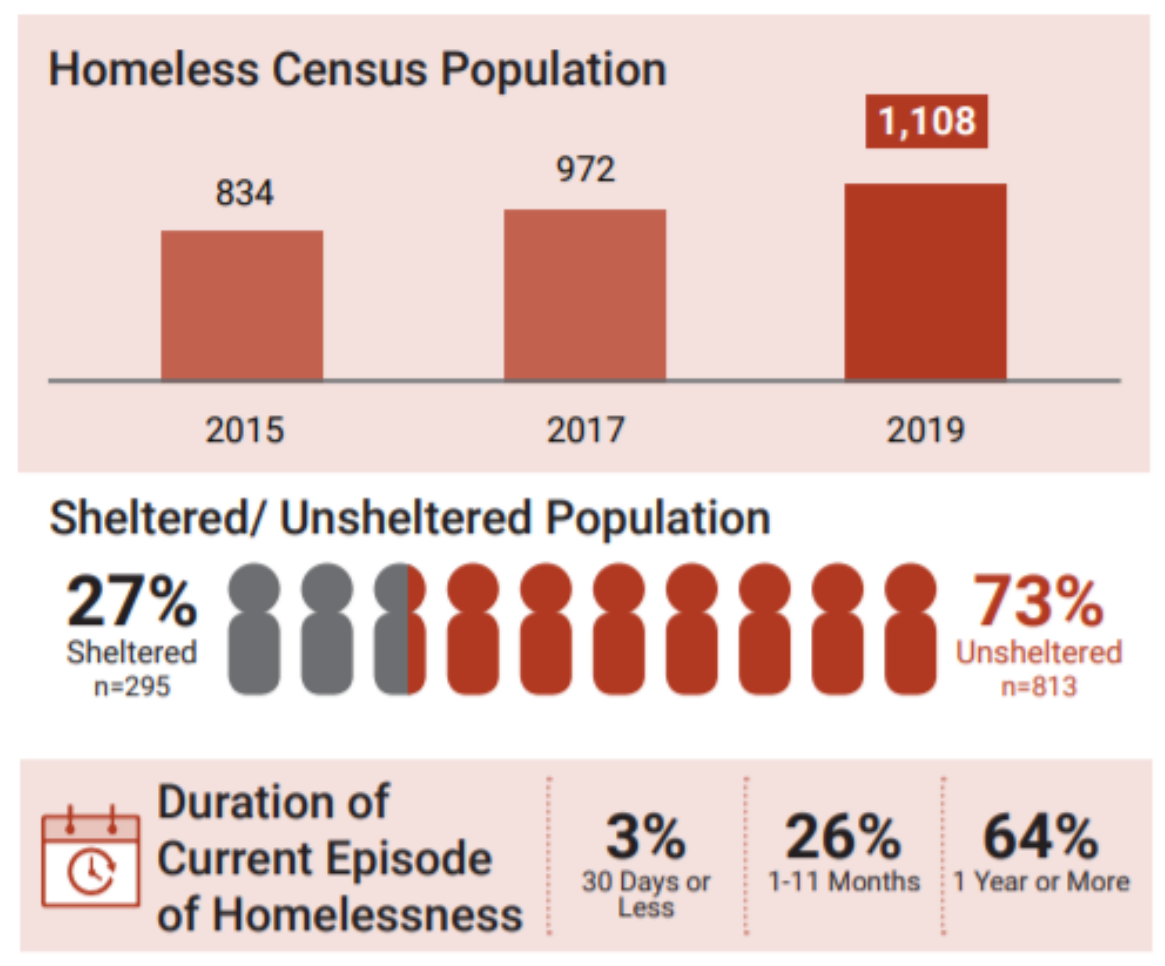
PIT count (2019)

33

McKinney-Vento
Count (2018)

~20%

Living at Federal
poverty level (2019)



- Total homeless population has grown by ~33% over the past 4 years
- ~73% of the homeless population is unsheltered (2019)
- City of Berkeley minimum wage, at full time, is ~\$2,699 / month

Source: 2020 Alameda County Homeless System Modeling (EveryOne Home); Turner Center analysis of 2018 ACS 5-Year PUMS data & unemployment statistics from the U.S. Bureau of Labor Statistics Current Employment Survey (June 2020), oaklandca.gov, Oakland Housing Authority

1. Alameda County Data; rough estimate based on 64k ELI renter households and 2.86 average persons per HH 2. state-wide CA data; 3. Alameda County Data for 2 person household; 4. Alameda County Data

The Regional Impact Council

A roundtable of policymakers, key affordable housing, social equity and economic mobility stakeholders, housing and homelessness service providers, individuals with lived experience, and business and philanthropic partners



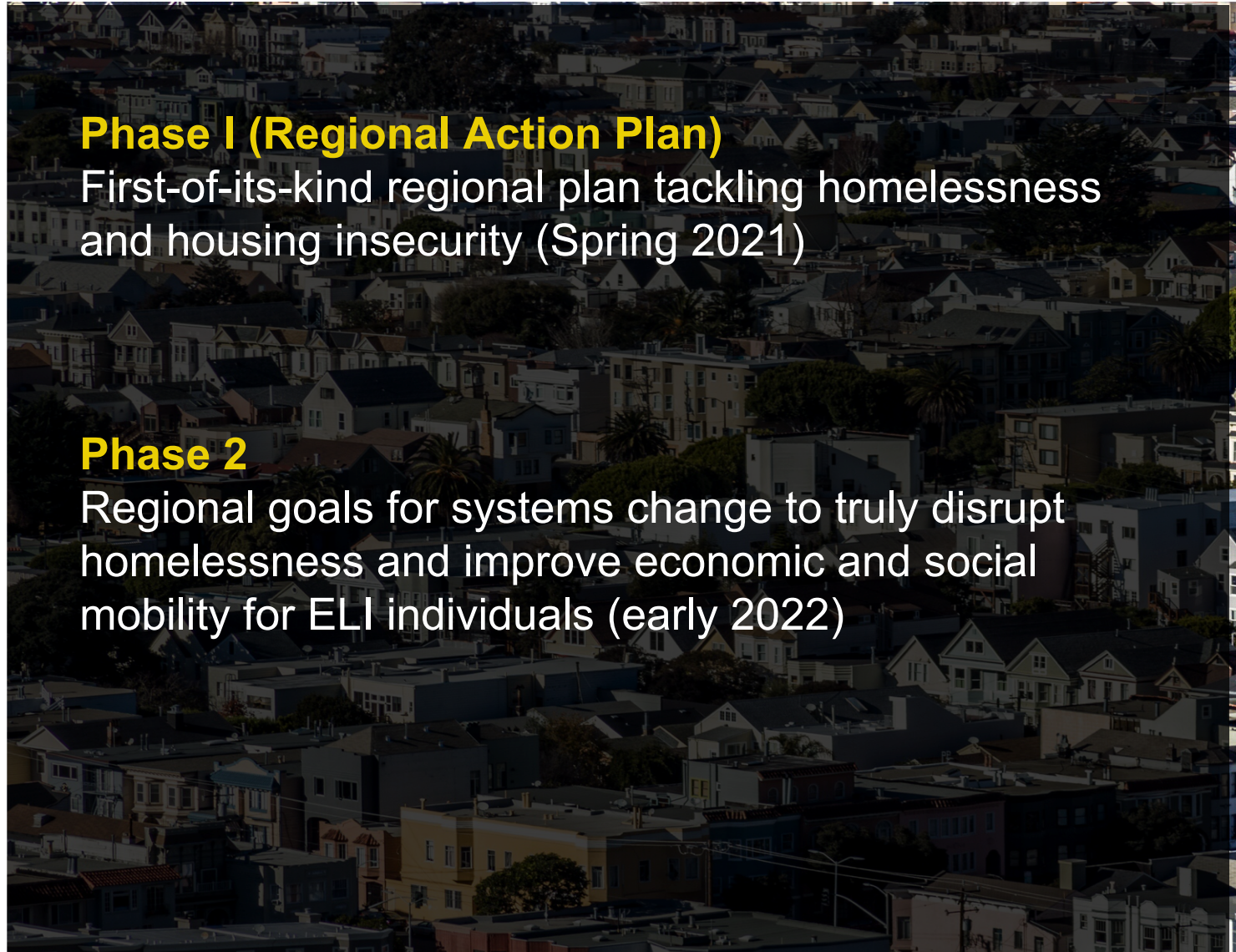
RIC
REGIONAL IMPACT COUNCIL

Phase I (Regional Action Plan)

First-of-its-kind regional plan tackling homelessness and housing insecurity (Spring 2021)

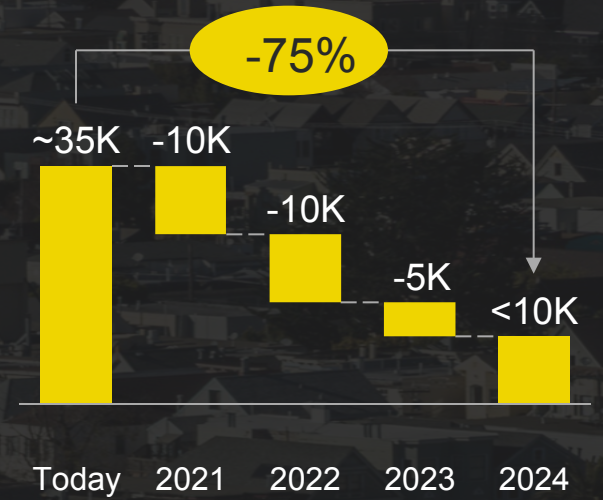
Phase 2

Regional goals for systems change to truly disrupt homelessness and improve economic and social mobility for ELI individuals (early 2022)



Regional Action Plan: Reduce unsheltered homelessness by 75% by 2024

The RAP aims to dramatically reduce the number of people experiencing unsheltered homelessness over next three years



The Regional Action Plan lays out a roadmap for reaching this goal through:



Implementing a 1-2-4 Framework: a new, integrated approach to allocating scarce housing resources



Leading a coalition to advocate for policies, programs and funding to achieve this goal

To achieve a 75% reduction, we must simultaneously invest in 3 interventions:

For each addition to interim housing, 2x permanent housing solutions and 4x homelessness prevention

1-2-4 Framework

Unsheltered

+1x



Interim Housing

(i.e., short-term / temporary solution on the path towards permanent exit)

Examples:

- Navigation centers
- Tiny homes
- Shelter beds
- Etc..

+2x



Permanent Housing Solutions

Examples:

- Permanent Supportive Housing (PSH)
- Rapid re-housing (RRH)
- Flexible subsidy pools / shallow subsidies
- Section 8 vouchers
- Group housing
- Other long-term housing solutions

Currently housed

Stemming inflow

+4x



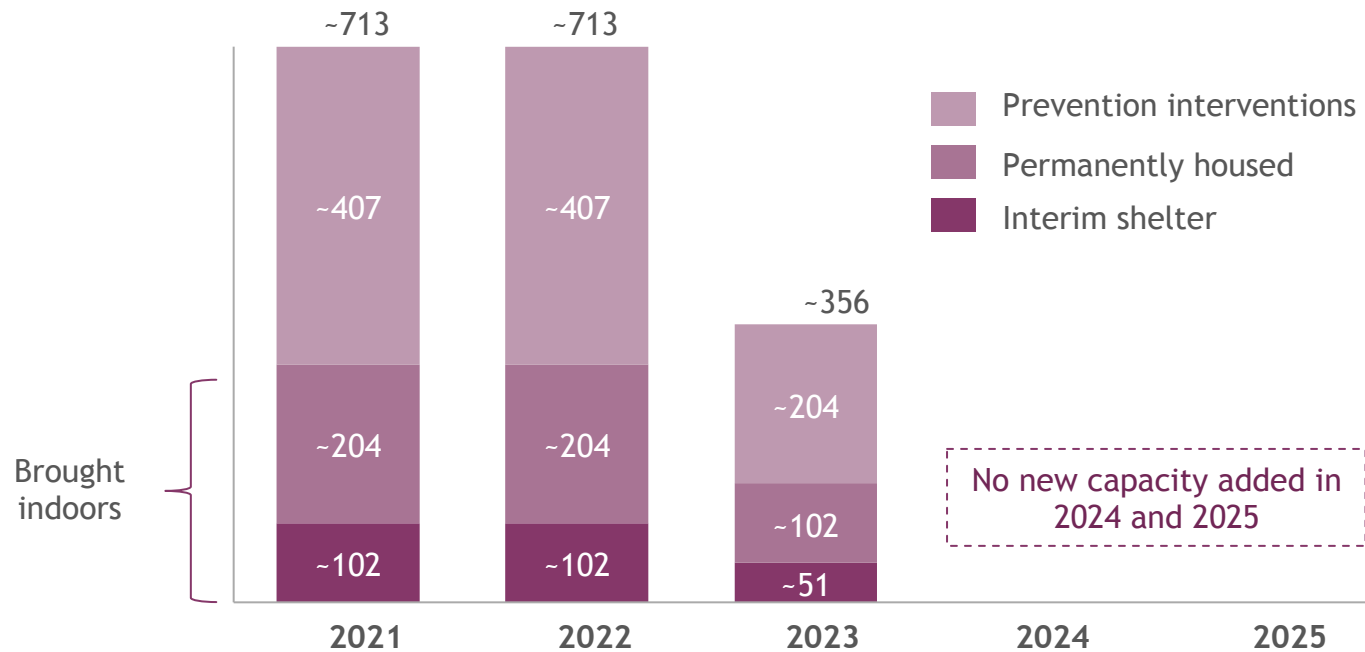
Homelessness Prevention

Prevent at-risk households from experiencing homelessness through increased investment in strategies such as rental assistance

1-2-4 Framework | Illustrative modeling for City of Berkeley

New interventions (HHs served)

Illustrative top down model:
City of Berkeley view



~765
(75% of today)

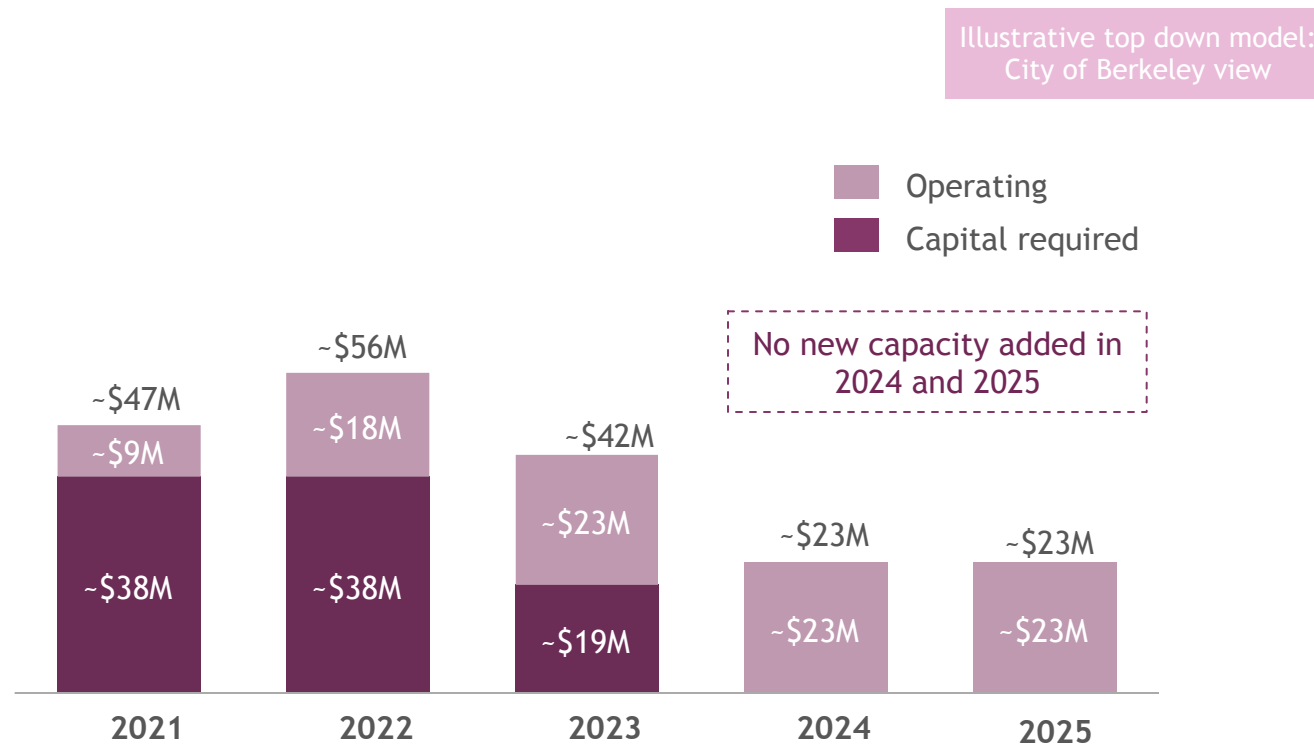
Total brought indoors until 2024

~1,020

Total new prevention interventions

Note: "Brought indoors" defined as brought from unsheltered to housing in interim housing or housing solutions (including subsidies); Sources: HUD PIT count data, San Francisco, Alameda, Contra Costa County documents and experts; Bay Area Council Economic Institute Homelessness Report

1-2-4 Framework | Cost estimate for City of Berkeley



~\$190M

5-year cumulative cost

Note: Cost estimates based on ranges from various Bay Area sources; capital costs include construction costs and assume no land costs; operating costs include services provided and subsidies; no discounting applied; scenario modeled is 30%/30%/15% scenario housing 75% of unsheltered before 2024; construction timelines and funding pools assumed flexible to timeline shown; Sources: HUD PIT count data, San Francisco, Alameda, Contra Costa County documents and experts; Bay Area Council Economic Institute Homelessness Report

Three steps to implement the 1-2-4 Framework

Evaluate

Evaluate how each city and county allocates existing resources

Align

Identify opportunities to align **existing resources** with the 1-2-4 framework

Advocate

Advocate for **new resources** to fill gaps and scale interventions commensurate with the need

Prevention: Differentiating Interventions on the Prevention Continuum

Reducing new episodes of homelessness requires a suite of prevention intervention strategies deployed such that each household gets what they need at the time they need it

Eviction Prevention

Eligible Population:

- ***Future risk of homelessness***
- *Leaseholders*
- *0-50% AMI*

Targeting criteria:

- *HHs with severe rent burden*
- *Active eviction, landlord harassment or habitability issues*
- *Highly impacted communities and neighborhoods*

Homelessness Prevention

Eligible Population:

- ***Imminent risk of homelessness***
- *Doubled up or leaseholders*
- *0-30% AMI*

Targeting criteria:

- *HHs with a previous episode of homelessness*
- *Highly impacted communities and neighborhoods*

Homelessness Diversion

Eligible Population:

- ***Lost housing and either seeking shelter or in shelter***
- ***Presenting for homelessness assistance***
- *Doubled up*
- *0-30% AMI*

Targeting criteria:

- *HHs with a previous episode of homelessness*
- *Highly impacted communities and neighborhoods*



ALL
HOME

www.allhomeca.org

*To get in touch with us, please reach out to Nahema Washington at:
nwashington@allhomeca.org*