



Office of the City Manager

CONSENT CALENDAR
October 27, 2020

To: Honorable Mayor and Members of the City Council
 From: Dee Williams-Ridley, City Manager
 Submitted by: Liam Garland, Director, Public Works
 Subject: Referral Response: Game Day Parking – Minor Update to Include RPP Area K

RECOMMENDATION

Adopt a Resolution re-establishing parking restrictions on UC Berkeley football game days to include Residential Preferential Parking (RPP) Zone K (Panoramic Hill), and rescinding Resolution No. 69,089-N.S.

FISCAL IMPACTS OF RECOMMENDATION

Minimal in the short term. If any signage installation is necessary during the spectator-less Cal football season, staff will adapt existing sign inventory as much as possible to reduce costs.

Fully implementing the recommendation to prepare for resumption of spectator sports at Cal Memorial Stadium will incur an initial cost of \$2,250 and an ongoing cost of \$1,425 annually which is included in the baseline Traffic Maintenance FY21 Budget Fund 127.¹

CURRENT SITUATION AND ITS EFFECTS

This report responds to referral #002-0547 that originally appeared on the agenda of the September 10, 2019 Council meeting and was sponsored by Councilmember Lori Droste.²

This referral directed staff to add RPP Zone K, which covers the Panoramic Hill neighborhood, to the new UC Berkeley football game day “Enhanced Fine” enforcement program introduced last year. The report reflected growing concern among Panoramic Hill residents about parking availability given their immediate proximity to the stadium.

After initial uncertainty surrounding the resumption of college sports due to the ongoing COVID-19 pandemic, UC Berkeley is currently planning to resume football games at Cal

¹ **Initial costs:** Approximately 25 new RPP signs specifying new parking restrictions, at a unit cost of \$50 per sign, and 10 person hours to install the new signs for a one-time labor cost of \$1,000.

Ongoing costs: Approximately 25 decals to identify football game dates (replaced annually) at cost of \$625. Initial decal installation included with sign installation cost. Annual decal replacement requires 8 person hours at a cost of \$800.

² September 10, 2019 *City Council Agenda: Game Day Parking – Minor Update to Include RPP Area K*
<https://bit.ly/3ns4ijQ>

Memorial Stadium in November 2020. The first game against the University of Washington is scheduled for Saturday, November 7.³ While the stadium will be closed to spectators, some lower Panoramic Hill streets could experience localized parking impacts if Cal football fans drive and walk to Charter Hill (aka “Tightwad Hill”), located east of the stadium, to view the game.⁴

The attached Resolution includes Panoramic Hill within the “Enhanced Fine Area.” If needs arise during the 2020 Cal football season, new signage will be installed on a rolling basis based on proximity to the stadium and availability of resources with parking enforcement conducted accordingly.

BACKGROUND

At the May 14, 2019 Council Meeting, staff presented a package of “mid-term” reforms to the RPP Program.⁵ Among these recommendations was a staff response to two Council referrals regarding parking enforcement in neighborhoods closest to campus on UC Berkeley home football game days. At the meeting, Council approved Resolutions No. 68,901-N.S., which established the geographic boundaries for Enhanced Fine Areas, and No. 68,901-N.S., which established a new Parking Fine Schedule including a fine of \$225 for parking in Enhanced Fine Areas without a valid RPP permit.

Language explicitly authorizing new Enhanced Fine tow-away zones on specific residential streets closest to Cal Memorial Stadium on UC home football game days was unintentionally omitted from Resolution No. 68,901-N.S. A subsequent Resolution No. 69,089 approved on September 10, 2019 corrected these minor typos, allowing enforcement of the new “Enhanced Fine Areas” to roll out during the fall 2019 Cal football season.⁶

ENVIRONMENTAL SUSTAINABILITY

This item has no discernible environmental effects.

RATIONALE FOR RECOMMENDATION

Expanding “Enhanced Fine” parking enforcement to Panoramic Hill will help alleviate localized parking availability problems for residents on UC Berkeley football game days, particularly when spectators are allowed to return to games.

³ UC Berkeley football schedule, accessed October 6, 2020 <https://bit.ly/33yjN1B>

⁴ “Tightwad Hill” Wikipedia entry, accessed October 6, 2020 <https://bit.ly/3ljEynB>

⁵ May 14, 2019 *City Council Agenda: Residential Preferential Parking (RPP) Program Reform and Expansion Phase II: Recommendations for Increased Staffing, Enhanced Football Game Day Enforcement, and Expansion* <http://bit.ly/2ZW6Ee5>

⁶ September 10, 2019 *City Council Agenda: Correction to Resolution No. 68,901-N.S. to Authorize Enhanced Fine Tow Zones on UC Berkeley Football Game Days* <https://bit.ly/3iCbaaH>

ALTERNATIVE ACTIONS CONSIDERED

None.

CONTACT PERSON

Farid Javandel, Transportation Manager, Public Works (510) 981-7061
Danette Perry, Parking Services Manager, Public Works (510) 981-7057
Gordon Hansen, Senior Planner, Public Works (510) 981-7064

Attachments:

- 1: Resolution
- 2: Original Referral Report from September 10, 2019

RESOLUTION NO. ##,###-N.S.

ESTABLISHING THE ZONES FOR “ENHANCED FINE AREAS” AND FOOTBALL GAME DAY VIOLATIONS, AND AUTHORIZING THE CITY MANAGER TO MAKE AN ANNUAL DETERMINATION AND NOTICE OF DATES ON WHICH FOOTBALL DAY VIOLATIONS WILL BE ISSUED; AND RESCINDING RESOLUTION NO. 69,089-N.S.

WHEREAS, City Council Resolution No. 69,089-N.S. restated the geographic area for football game day citations, correcting geographic boundaries for Enhanced Fine tow-away zones requested in the Council action; and

WHEREAS, University of California football games attract a large number of visitors who drive to the game and park in residential neighborhoods to the north and south of campus, which typically makes it difficult for residents to find parking in close proximity to their homes on football game days; and

WHEREAS, current enforcement of the two-hour time limit for vehicles without a valid permit in portions of Residential Preferential Parking (RPP) Zones closest to the stadium is time intensive, reducing the ability of Parking Enforcement to maximize limited staff capacity on game days; and

WHEREAS, the permanent double parking fine program established by Resolution No. 63,800-N.S. has not deterred extended game day parking in portions of RPP Zones B and D, particularly in comparison to private off-street facilities in the vicinity of the stadium offering game day parking for up to \$100; and

WHEREAS, staff have confirmed with Parking Enforcement leadership that new “Enhanced Fine Areas,” in which vehicles without a valid RPP permit would not be permitted to park on football game days, would maximize limited enforcement capacity on football game days; and

WHEREAS, concurrent with this Resolution, the Council is considering adoption of another Resolution establishing a new schedule of parking violations and fines for parking violations, including in new “Enhanced Fine Areas;” and

WHEREAS, the existing “double parking fine” program would continue to be in effect on football game days in addition to the new “Enhanced Fine Areas;” and

WHEREAS, the schedule of parking violations and fines for parking violations may be revised in the future without affecting established zones for football day citations and Enhanced Fine Areas and the City Manager’s authorization to determine and provide public noticing of dates for these violations.

October 27, 2020

NOW THEREFORE, BE IT RESOLVED by the Council of the City of Berkeley that the established zone for the northerly Enhanced Fine Area is north to (not including) Cedar Street, west to (not including) Shattuck Avenue, south to Hearst Avenue, and east to the existing boundary of RPP Zones F and G.

BE IT FURTHER RESOLVED by the Council of the City of Berkeley that the established zone for the southerly Enhanced Fine Area is north to Dwight Way between Telegraph Avenue and Regent Street, north to Haste Street between Regent Street and Bowditch Street, north to Dwight Way between Bowditch Street and College Avenue; east to (but not including) College Avenue between Dwight Way and Parker Street; north to (but not including) Parker Street between College Avenue and Warring Street; east to Warring Street between Parker Street and Derby Street; north to Derby Street between Warring Street and Belrose Avenue; east to (but not including) Belrose Avenue/Claremont Boulevard between Derby Street and Russell Street; south to (but not including) Russell Street between Belrose Avenue/Claremont Boulevard and Telegraph Avenue; and west to (but not including) Telegraph Avenue between Russell Street and Dwight Way.

BE IT FURTHER RESOLVED by the Council of the City of Berkeley that the established zone for the easterly Enhanced Fine Area is north to Canyon Road between Prospect Street and the Berkeley-Oakland city limits, inclusive of RPP Zone K; east to the Berkeley-Oakland city limits; south to Dwight Way between the Berkeley-Oakland city limits and Prospect Street; and west to (but not including) Prospect Street between Dwight Way and Channing Way.

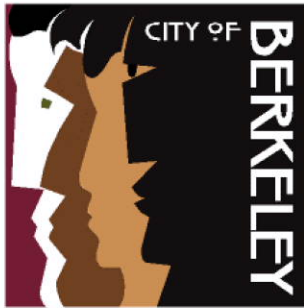
BE IT FURTHER RESOLVED by the Council of the City of Berkeley that the established zone for Enhanced Fine tow-away zones includes the following streets: Channing Way west to (but not including) College Avenue and east to Prospect Street; Haste Street west to (but not including) College Avenue and east to Piedmont Avenue; Dwight Way west to College Avenue and east to Prospect Street; Parker Street west to College Avenue and east to Warring Street; College Avenue north to Dwight Way and south to Parker Street; Etna Street north to Dwight Way and south to Parker Street; Piedmont Avenue north to Channing Way and south to Parker Street; Warring Street north to Dwight Way and south to Parker Street; only the east side of Warring Street north to Channing Way and south to Dwight Way; and Prospect Street north to Channing Way and south to Dwight Way.

BE IT FURTHER RESOLVED by the Council of the City of Berkeley that the established zone for football day citations is north to (not including) Cedar Street, south and east to the Berkeley-Oakland city limits, and west to Oxford and Fulton Streets (including both sides of these streets).

BE IT FURTHER RESOLVED by the Council of the City of Berkeley that the City Manager is directed to annually determine the dates during which there are higher parking fines for football day citations, and provide reasonable notice to the public of these dates.

October 27, 2020

BE IT FURTHER RESOLVED by the Council of the City of Berkeley that Resolution No. 69,089-N.S. is hereby rescinded.



Lori Droste
Berkeley City Council District 8

CONSENT CALENDAR
September 10, 2019

To: Honorable Mayor and Members of the City Council
From: Councilmember Lori Droste and Mayor Jesse Arreguin
Subject: Game Day Parking - Minor Update to include RPP area K

RECOMMENDATION

Refer to the City Manager the modification of parking restrictions in specified RPP Zones on UC Berkeley home football game days as follows: establish “Enhanced Fine Areas” to prohibit parking without a valid RPP permit to include RPP Zone K; and install new RPP signs in zone K to clearly indicate UC Berkeley home football game day parking prohibitions.

BACKGROUND

On May 14, 2019, Council adopted a [“Residential Preferential Parking Program Reform and Expansion Phase II: Recommendations for Increased Staffing, Enhanced Football Game Day Enforcement, and Expansion”](#) item that included updated fines and expanded prohibitions on UC Berkeley home football game day parking.

These new rules were adopted for portions of RPP areas B, D, F, G, and I. Since that time, there is growing concern that RPP Area K should have been included in those new regulations. This item amends the current rules to include Area K, which encompasses Panoramic Hill, a neighborhood directly east of the football stadium that is negatively impacted on UC Berkeley home football game days.

FISCAL IMPACTS OF RECOMMENDATION

Staff time and signage

ENVIRONMENTAL SUSTAINABILITY

None

CONTACT PERSON

Lori Droste, Berkeley City Council, District 8, 510-981-7180

ATTACHMENTS

MAY 2019 Game Day Parking Item



Office of the City Manager

PUBLIC HEARING
May 14, 2019

To: Honorable Mayor and Members of the City Council
 From: Dee Williams-Ridley, City Manager
 Submitted by: Phillip Harrington, Director, Public Works
 Subject: Residential Preferential Parking Program Reform and Expansion Phase II: Recommendations for Increased Staffing, Enhanced Football Game Day Enforcement, and Expansion

RECOMMENDATION

Conduct a public hearing and upon conclusion:

1. Adopt first reading of an Ordinance amending Berkeley Municipal Code Chapter 14.72 to allow Residential Preferential Parking (RPP) in areas zoned Mixed Use-Light Industrial;
2. Adopt a Resolution to expand and enhance the RPP Program, raising permit fees for cost neutrality while increasing parking enforcement staff and equipment to augment RPP enforcement, improving UC Berkeley home football game parking enforcement, allowing more residents to opt-in, and rescinding Resolution 68,344-N.S.;
3. Adopt a Resolution modifying parking restrictions in specified RPP Zones on UC Berkeley home football game days as follows: establish “Enhanced Fine Areas” to prohibit parking without a valid RPP permit in portions of RPP Zones B, D, F, G, and I; and install new RPP signs in zones B, D, F, G, and I to clearly indicate UC Berkeley home football game day parking prohibitions; and
4. Adopt a Resolution establishing a new Parking Fine Schedule, including parking fines of \$225 per violation of BMC 14.40.090 in new Enhanced Fine Areas on posted UC football game days, and rescinding Resolution No. 68,466-N.S.

SUMMARY

The recommended actions constitute a package of “mid-term” changes to the RPP Program, developed in response to previous Council direction. These changes include: 1) hiring (7) seven more parking enforcement personnel to augment enforcement in existing and new RPP Zones, particularly on UC Berkeley home football game days; 2) instituting new parking restrictions and increased fines on football game days; 3) allowing blocks currently ineligible for RPP to opt-in to the Program; and 4) increasing permit fees to make the Program cost-neutral.

FISCAL IMPACTS OF RECOMMENDATION

The recommendation would provide staffing to increase enforcement of RPP Program parking restrictions, including during UC Berkeley football games, and allow many currently ineligible residents to opt-in to the Program. The capital and operational cost and revenue elements associated with these changes are summarized below. These are new obligations, in addition to existing costs to operate the program.

Football Game Day Enforcement Cost

Implementing the recommendation for the 2019 football season will incur a one-time capital cost of \$80,000, including:

- Approximately 500 new Residential Preferential Parking (RPP) signs specifying new parking restrictions, at a unit cost of \$100 per sign, and 250 person hours to install the new signs for a one-time labor cost of \$25,000; and
- Approximately 500 decals to identify football game dates (replaced annually) at cost of \$5,000. Initial decal installation included with sign installation cost. Annual decal replacement requires 100 person hours at a cost of \$10,000.

Staff calculates the ongoing cost to be \$15,000 annually. Initial and annual costs are summarized in the table below:

		Initial Cost	Ongoing Annual Cost
Signs	Materials	\$50,000	N/A
	Labor	\$25,000	N/A
Decals	Materials	\$5,000	\$5,000
	Labor	Included in sign installation.	\$10,000
Total		\$80,000	\$15,000

Currently, the UC Berkeley Athletics Department reimburses the City for signs produced and installed to manage football game day traffic. The current signs are over 20 years old; in 2017, UC paid approximately \$18,600 for sign and decal maintenance costs. Staff recommend that City leadership coordinate with UC Berkeley to fund the recommended one-time signage/decal upgrades, plus ongoing annual costs.¹

RPP Program Enforcement Enhancement and Expansion Cost

The fiscal impact of all of these recommendations will be realized in the General Fund (011). All permit fees and citation revenues, including revenue from new enforcement staff, will be deposited in the General Fund. In turn, all new staff and equipment costs will come out of the General Fund. Costs include:

- Six (6) Parking Enforcement Officers (\$124,818 per FTE; total \$748,908/year), and one (1) Parking Enforcement Supervisor at \$138,065/year;

¹ If UC Berkeley is unable to pay this cost, then the funding would come from the General Fund.

- Six (6) parking enforcement vehicles (\$210,000 total), each equipped with standard automated license plate recognition (ALPR) systems at \$78,363 each (\$470,178), annualized over a five-year period;² and
- New RPP sign installation, including labor and materials, at \$23,000 per year.³

Estimated New Revenue

During the 2018 season, football-related RPP citations resulted in \$49,100 in revenue, and staff anticipates the new “Enhanced Fine Areas” to generate an additional \$31,650. More significantly, hiring six (6) more PEOs is expected to increase citation revenue in both new and existing RPP areas. Staff estimate that each new PEO would issue up to \$75,000/year in RPP citations, for a total of \$450,000/year.

Incremental Fiscal Impact in FY 2020

Hiring of new PEOs and procurement of associated enforcement equipment would take place over the course of FY 2020, resulting in incremental increases in new citation revenue as new staff are selected, trained, and deployed. Similarly, each opt-in petition for new areas will take time to verify and bring to Council for approval, resulting in delayed revenues from permits purchased in expansion areas. Therefore, the full fiscal impact of the Program’s expansion and enhancement will not be seen in FY 2020. Staff will continue to monitor the Program’s costs and revenues as new enforcement staff are hired.

User Fee Increases for Cost Neutrality

Per Council Budget Policies,⁴ the RPP Program should pay for itself. As of March 2019, the RPP Program still runs a deficit of approximately \$124,675. The deficit has shrunk by \$71,125 since FY 2017, when the deficit was approximately \$195,800. This deficit reduction, but not elimination, may be due in part to a decline in permit revenues following the 20% fee increase on April 1, 2018. Customers may also have reevaluated their needs in light of the new maximum of three (3) annual permits per address.

The proposed fee structure would go into effect June 1, 2019, to support increasing enforcement in FY 2020. It is estimated to generate approximately \$368,280 of additional revenue, including \$21,600 from annual permit sales in potential new opt-in areas, for the General Fund (Fund 011). The following table reflects increases for each type of permit in the RPP fee structure to result in a cost-neutral Program.

² Proposed permit fees incorporate half of PEO salary costs, and half of the one-time vehicle and equipment costs, as RPP enforcement accounts for approximately half of all parking enforcement duties. Remaining costs are expected to be covered by new revenues resulting from new staff enforcing other duties, such as street sweeping, parking meter payments, and school zones.

³ Up to twenty blocks in new areas would be allowed to join the Program per year. Staff assumes six RPP signs per block (three signs on each side of the block), and approximately \$1,150 per block.

⁴ “Council Budget Policies”: <http://bit.ly/2z4UiFY>

Permit Type	Current Fee	Proposed Fee	\$ Increase	% Increase
Annual Residential & In-Home Care	\$66.00	\$90.00	\$24.00	36.4%
1-Day Visitor	\$3.00	\$4.00	\$1.00	33.3%
14-Day Visitor	\$34.00	\$47.00	\$13.00	38.2%
Semi-Annual Residential & In-Home Care	\$33.00	\$45.00	\$12.00	36.4%
Community-Serving Facility	\$83.00	\$114.00	\$31.00	37.3%
Merchant	\$185.00	\$253.00	\$68.00	36.8%
1-Day Senior Center	\$1.00	\$1.00	N/A	N/A
Replacement of Annual, 14-Day, Community-Serving Facility, & Merchant Permits	\$15.00	\$21.00	\$6.00	40.0%

The proposed fee structure is estimated to generate approximately \$1,305,240 in revenue for the General Fund in FY 2021, once all new staff have been hired and anticipated expansion has occurred. This increase of \$368,280 in revenue would close the projected deficit, resulting in a cost-neutral Program (the \$600 difference is within the margin of approximation). With the proposed fee increase, the total Program revenue is projected to be \$3.41 million including revenue resulting from an increase in RPP-related citations due to higher staffing levels and new football fines.

RPP Program Financial Components	April 2018- March 2018 Actuals	FY 2021 Projections
Total RPP Permit Fee Revenue	\$936,960	\$1,305,240
RPP-Related Citation Revenue	\$1,573,840	\$2,023,840
Football RPP-Related Citation Revenue	\$49,100	\$80,750
Total Revenue	\$2,559,910	\$3,409,830
Total RPP Program Costs	\$2,684,580	\$3,409,230
RPP Program Deficit/Surplus	(\$124,670)	\$600

CURRENT SITUATION AND ITS EFFECTS

This report represents “mid-term” changes to the RPP Program as part of ongoing RPP Program Reform & Expansion. Building on the initial “short-term” changes enacted by Council in February 2018, described in the accompanying Information Report on this Agenda, this report recommends “mid-term” changes that respond to remaining resident requests and Council referrals.

UC Berkeley Football Game Day Parking Demand

The UC Berkeley football season typically spans twelve (12) games between September and November. Up to seven (7) games per year are played at California

Memorial Stadium (“stadium”), near the eastern end of Bancroft Avenue. Most home games occur on Saturday afternoons or evenings. Neighborhoods surrounding UC Berkeley currently have RPP. South of campus, RPP Zones A, B, D, and K are enforced Monday to Saturday, with the exception of Zones I (Telegraph) and L (Claremont), which are not enforced on Saturday. North of campus, RPP Zones F and G are enforced Monday through Friday.

Game attendees who drive and park in surrounding neighborhoods can make it difficult for some residents to find parking near their homes during games. In fall 2017, the City analyzed game day parking south of campus.⁵ The analysis found that parking occupancy in the study area increased by about 25% on a game day compared to a non-game day, with increases of approximately 35-50% closest to campus (RPP Zones B, D, and I). Anecdotal evidence from residents also suggests poor parking by visitors may impede access to residential driveways at times.

Existing Game Day Parking Restrictions

Special parking restrictions and enforcement on football game days currently includes:

- Increased fines for certain parking violations⁶ within the boundaries of Cedar Street (north), Berkeley-Oakland city limits (south and east), and Oxford and Fulton Streets (west), with double fines in RPP Zones A, B, and D; and
- Tow-away zones for all vehicles on certain streets close to campus,⁷ and additional no-parking areas at metered parking spaces in the Southside and Northside areas.

The Berkeley Police Department (BPD) requires substantial staff time and resources for football game day duties. BPD typically assigns sworn officers on overtime to patrol areas near the stadium to discourage bad behavior.⁸ Any staffing gap is filled by parking enforcement personnel. Between five and seven PEOs may be reassigned to game day duty, with one PEO specifically assigned to regulate access to the Panoramic Hill neighborhood (RPP Zone K). That leaves between two and four PEOs to enforce meter payments, curb markings, or RPP time limits elsewhere in the City. As shown in the table below, the City does not have enough PEOs to provide regular Saturday enforcement in addition to football duties on game days.

Enforcement Duties	Number of Assigned PEOs
--------------------	-------------------------

⁵ Specifically, Zones A, B, D, I, and L. While not explicitly studied, staff assume neighborhoods north of campus experience similar game day parking demand patterns.

⁶ Football game day defined as 9:30 a.m. to 11 p.m., regardless of game start time. Most football game day citation rates are 150% of non-game day citation rates. For example, a citation for a vehicle parked in a No Parking Zone (red curb) that is normally \$64 costs \$96 on a game day.

⁷ For example: Piedmont Avenue between the stadium and Channing Way, Bancroft Way between Warring Street and Bowditch Street, and College Avenue between Bancroft Way and Dwight Way.

⁸ UC Berkeley reimburses the City for BPD overtime costs.

	Non-Game Days	Football Game Days
Game Day Activities	0	5-7
Parking Meters, Curbs, Time Limits, and RPP	7-9	2-4

Requests for Further Program Expansion

In the past year, staff received four (4) opt-in requests from residents outside of the current RPP eligibility area, all of them in northwest Berkeley.⁹ In the previous five years, staff have received another five (5) requests from residents outside of the program boundaries.¹⁰ A map depicting these requests is provided as Attachment 5.

Recommendation: Increase and Enhance RPP Enforcement, Including on Football Game Days, and Expand RPP Eligibility

1. Enhanced Enforcement in Existing RPP Areas

Due to staffing constraints discussed in the accompanying Information Report on this Agenda, enforcement in existing RPP areas occurs only once per day. Staff recommend hiring sufficient parking enforcement staff to resume morning and afternoon patrols of existing RPP areas. This will help reinforce RPP time limits, particularly on streets near popular destinations such as public facilities or commercial districts. Increased patrols may also reduce the amount of one-off requests from residents who do not observe enforcement as frequently, which reduce PEOs’ ability to conduct regularly-scheduled beat patrols.

To further increase parking enforcement capacity, staff also recommend that PEOs should no longer accompany street sweeping vehicles. Instead, beat officers would enforce restrictions during the three-hour restriction window, before the sweeper cleans the street, to allow time for other responsibilities.¹¹ Additionally, staff strongly recommend against introducing additional permit types for resident services, e.g., ‘nanny permits’, or ‘gardener permits’, which serve as exemptions from RPP restrictions. In addition to further increasing already high parking demand in some areas, adding new permits for non-residents dilutes the Program’s effectiveness for all existing permit holders and encourages more driving, which is contrary to the City’s

⁹ Requests received in FY 2019 include: 10th Street between Cedar and Jones Streets; 10th Street from University Avenue to Allston Way, Addison Street from 10th Street to San Pablo Avenue, and Allston Way from 10th Street to San Pablo Avenue; Camelia Street from 7th to 8th Street; and Page Street from 8th to 9th Street.

¹⁰ Requests received prior to FY 2019 include: Campus Drive from Avenida Drive to the Berkeley Lab Campus; Spruce Street from Los Angeles Avenue to Eunice Street; Stannage Avenue between Gilman Street and Harrison Street; Stanton Street from Ashby Avenue to Prince Street; and various areas adjacent to Solano Avenue.

¹¹ In the future, street sweeping vehicles may be equipped with GPS beacons, which would allow residents to check when streets reopen for parking in real-time.

Climate Action Plan goals of reducing vehicular emissions.

2. Enhanced Game Day Parking Management and Enforcement

In response to Council referrals, staff has prepared a proposal for the 2019 football season to improve parking availability for residents in neighborhoods closest to campus. Illustrated in Attachment 6, this proposal builds on existing game day restrictions by adding tougher penalties for non-residents closer to the stadium:

- **New tow-away areas for vehicles without a valid RPP permit** on streets within one quarter-mile of the stadium (including portions of RPP Zones D and I), where demand was heaviest on the game day analyzed in fall 2017.
- **New “Enhanced Fine Areas”** on streets within one half-mile of the stadium (including portions of RPP Zones F and G north of campus and portions of Zones B and D south of campus), where vehicles without a valid RPP permit will be subject to a one-time fine of \$225.¹²

This proposal maximizes game day staff capacity and effectiveness in areas where residents experience the most inconvenience. While current enforcement requires two passes to determine whether a non-permitted vehicle exceeds the time limit, under this proposal a PEO will need to check only once to verify whether a vehicle has a permit.

Signage is critical to effective enforcement of parking restrictions. In addition to clearly defining expectations for visitors, signage justifies the issuance of citations that violate posted restrictions. Details about the costs and content of new signage required to implement this proposal is provided in the Fiscal Impacts section of this report.

3. Additional Strategies to Increase Parking Availability on Game Days

While some street parking spaces near the stadium are restricted on game days, metered parking is available for visitors in Downtown, Southside/Telegraph, and the Northside area.¹³ Staff will return to Council later this year with options for special events, including adjusting special event rate setting ability at City parking garages, and piloting demand-responsive special event pricing at goBerkeley parking meters.

4. Further Expansion of RPP Program Eligibility

Although there have been relatively few opt-in requests from outside the current Program boundary, they still represent a customer need that the City cannot meet with existing staffing levels. To maximize enforcement resources, currently ineligible residents would be able to opt-in under the following conditions:

¹² Staff are sensitive to low income residents and visitors who may not be able to afford this fine. Options include a payment plan (AB 503), as well as applying to perform Community Service in lieu of paying for parking citations.

¹³ Meters operate 9 a.m. to 6 p.m. Monday to Saturday. On the Northside, Hearst Avenue between Euclid Avenue and La Loma Avenue is a tow-away zone on game days.

- A. Meet all existing requirements, including petitioner obtaining agreement of 51+% of all housing units in an area, and staff verifying limited parking availability in the mid-morning and mid-afternoon;
- B. Parcels must be located within two (2) blocks of a major commercial corridor (e.g., San Pablo Avenue or Gilman Street); or be adjacent to existing RPP boundaries; and
- C. In residentially-zoned areas, at least one full block (i.e., two sides of a street) must be included in the petition.

Petitioners in areas zoned Mixed Use-Residential or Mixed-Use Light Industrial will be subject to restrictions approved by Council in 2018 for Mixed Use Area P, including a reduced maximum of two (2) annual permits available per address. While slightly more restrictive than current requirements, this expansion approach would allow all petitioners who have submitted opt-in requests to date to be eligible for RPP.

5. Staffing Requirements

Enhanced enforcement, including new football game day restrictions, requires five (5) new PEOs and one (1) Parking Enforcement Supervisor, plus standard equipment. Expansion requires one (1) additional PEO for every twenty full blocks (i.e., both sides of a street) added to the Program, plus standard equipment.

BACKGROUND

The RPP Program began in 1980 (1) to protect Berkeley residential neighborhoods from an influx of non-resident vehicles and related traffic; (2) to assure continued quality of life for residents; and (3) to provide neighborhood parking for residents. The Program limits parking for vehicles not displaying an RPP permit in most RPP areas to two hours, and reserves available daytime parking for residents, between 9:00 a.m. and 7:00 p.m. Monday through Friday, and on some blocks Saturday.

In March 2014,¹⁴ Council directed staff to evaluate expanding the RPP Program beyond its then-current geographic boundaries. At a September 2017 Council Worksession, staff discussed several challenges with the RPP Program, and proposed incremental solutions to be implemented over the next three years.¹⁵ In February 2018, staff returned to Council with a first set of “short-term” policy reforms, including increased permit fees for Program cost neutrality, a limit of three (3) annual permits per address, and an expansion of RPP eligibility to two new zones in West Berkeley.¹⁶ Improving the effectiveness of the RPP Program is a Strategic Plan Priority Project, advancing the City’s goals to:

¹⁴ March 11, 2014 *City Council Agenda: Expansion of Permit Parking to Impacted Areas*: <http://bit.ly/2vTgnqD>

¹⁵ September 19, 2017 *City Council Agenda: Residential Preferential Parking (RPP) Program Recommendations*: <https://bit.ly/2iWaPDa>

¹⁶ February 27, 2018 *City Council Agenda: Residential Preferential Parking (RPP) Program Reform and Expansion*: <https://bit.ly/2Yq6tYB>.

- Provide an efficient and financially-healthy City government; and
- Be a customer-focused organization that provides excellent, timely, easily-accessible service and information to the community.

Football Game Day Enforcement

On April 5, 2016, Councilmembers Capitelli, Droste, and Wengraf sponsored a Referral to the Transportation Commission to review game day parking fines in RPP areas around campus, and to recommend higher fees to deter visitors from parking in those areas.¹⁷ On July 25, 2017, the Transportation Commission submitted a Council Report recommending an increase of game day parking fines to \$300 for vehicles without a valid RPP permit in Zones A, B, and D south of campus, but Council did not adopt the Commission's recommendation.¹⁸ On September 25, 2018, Councilmembers Droste, Wengraf, and Mayor Arreguin submitted a referral to the City Manager to implement game day parking restrictions similar to the Transportation Commission's 2017 proposal, but taking into account additional concerns such as parking on the north side of campus.¹⁹

ENVIRONMENTAL SUSTAINABILITY

Increasing parking fines for vehicles without valid RPP permits on football game days should increase parking availability for residents in neighborhoods near campus, reducing traffic congestion and vehicle emissions as drivers spend less time searching for parking. Increased fines may also encourage the use of alternative forms of transportation to UC football games.

Expansion of the RPP Program may encourage some drivers who work in commercial areas adjacent to proposed RPP areas to consider using other modes of travel, potentially reducing parking demand and congestion. While use of these other transportation modes may result in a corresponding reduction in traffic and greenhouse gases, staff anticipate the "two-hour shuffle" (i.e., moving a vehicle every two hours to avoid a ticket) may also begin to occur in new RPP areas among commuters who continue to drive. This behavior would have an adverse impact on traffic congestion, air quality, and excess fuel consumption.

RATIONALE FOR RECOMMENDATION

At the September 19, 2017 Worksession, Council expressed support for a roadmap for RPP reform and expansion, including short-, mid-, and long-term changes to the

¹⁷ April 5, 2016 *City Council Agenda: Refer to Transportation Commission to Reassess UC Berkeley Game Day Parking Fines in RPP Areas A, B, D, F and G Surrounding Campus* <https://bit.ly/2GRoSzi>

¹⁸ July 25, 2017 *City Council Agenda: Referral Response: Reassess UC Berkeley Game Day Parking Fines in RPP Areas A, B, D, F, and G Surrounding Campus* <https://bit.ly/2fwXaEj>

¹⁹ September 25, 2018 *City Council Agenda: Refer to the City Manager UC Berkeley Game Day Parking Restrictions and Fines in RPP Surrounding Campus* <https://bit.ly/2EwSnfS>

Program. Short-term recommendations were approved by Council in February 2018. The proposals contained in this report comprise staff's "mid-term" recommendations.

In their September 25, 2018 referral, Councilmembers Droste, Wengraf, and Mayor Arreguin supported increasing parking fines to increase parking availability for residents affected by football game demand. Previously, the Transportation Commission has also supported higher fines.

ALTERNATIVE ACTIONS CONSIDERED

The following table summarizes four alternatives considered by staff:

Alternative	Estimated Annual Permit Fee
<u>Option 1: Staff Recommendation, Enhanced RPP and Football Enforcement, and Expansion, Without Changing Saturday Enforcement.</u>	\$90/year (+36% / +\$24)
<u>Option 2: Saturday Enforcement in All Areas, Enhanced RPP and Football Enforcement, and Expansion</u> <ul style="list-style-type: none"> • Implement Saturday patrols of all RPP Zones,²⁰ plus increased RPP and football enforcement, and expansion as in Option 1 • Increase permit fees to eliminate deficit and add seven (7) PEOs and one (1) supervisor for increased RPP enforcement, one (1) PEO per twenty new blocks/year, and equipment 	\$97/year (+47% / +\$31)
<u>Option 3: Expansion and Enhanced Football Enforcement</u> <ul style="list-style-type: none"> • Implement enhanced football enforcement and expansion as in Option 1 • No change to existing RPP enforcement levels/frequency • Increase permit fees to eliminate deficit and add three (3) PEOs and one (1) supervisor for football, one (1) PEO per twenty new blocks/year, and equipment 	\$88/year (+34% / +\$22)
<u>Option 4: Expansion Only</u> <ul style="list-style-type: none"> • Expand RPP Program eligibility per guidelines in Option 1 • No changes to existing RPP and football enforcement levels • Increase permit fees to eliminate deficit and add one (1) new PEO and equipment per twenty new blocks/year 	\$82/year (+24% / +\$16)

Council could also reject all options, which would maintain the status quo RPP Program, including its structural deficit.

CONTACT PERSON

Farid Javandel, Transportation Manager, Public Works (510) 981-7061
 Danette Perry, Parking Services Manager, Public Works (510) 981-7057
 Gordon Hansen, Senior Planner, Public Works (510) 981-7064

Attachments:

- 1: Ordinance
- 2: Resolution: Fees: Residential Preferential Parking Permits
- 3: Resolution: Establish “Enhanced Fine Area” and Double Fine Locations
- 4: Resolution: Modify Parking Violation Fine Schedule
 - Exhibit A: Schedule of Fines and Late Payment Penalties for Parking Violations
 - Exhibit B: List of New Parking Violations

²⁰ Adding enforcement at streets with RPP restrictions in Zones C, E, F, G, H, I, J, L, M, O, and P.

- 5: Public Hearing Notice
- 6: FY 2019 and Prior Out of Area RPP Opt-In Requests
- 7: Proposed 2019 UC Berkeley Football Game Day Parking Restrictions

ORDINANCE NO. #,###-N.S.

AMENDING BERKELEY MUNICIPAL CODE CHAPTER 14.72 TO ALLOW FURTHER EXPANSION OF THE RESIDENTIAL PREFERENTIAL PARKING (RPP) PROGRAM

BE IT ORDAINED by the Council of the City of Berkeley as follows:

Section 1. That Berkeley Municipal Code Section 14.72.030 is amended to read as follows:

14.72.030 Definitions.

A. "Designated residential parking permit area" means any contiguous area upon which the Council imposes parking limitations pursuant to the authority granted by this chapter.

B. "Block front" means all of the property on one side of a street between two consecutive intersecting streets.

BC. "Mixed use" means the use of a lot or building with two or more different land uses including, but not limited to, residential, commercial, retail, office or manufacturing, in a single structure or a group of physically integrated structures; in a neighborhood context, it means blocks containing single-use residences interspersed with other land uses, such as commercial or industrial.

DG. "Mixed Use-Residential" and "Mixed Use-Light Industrial" refers to the zoning designations so defined in Berkeley Municipal Code Chapters 23E.84 and 23E.80, respectively.-

ED. "Assessor's Use Code" means the code used by the Alameda County Assessor to assess property for property tax purposes. These codes cover a range of building descriptions and uses, including a variety of residential uses.

FE. "Nonresidential vehicle" means a motor vehicle not eligible to be issued a residential parking permit, pursuant to the terms and conditions of this chapter, for the specific area in which it is parked. However, it could be eligible for a local business parking permit, or any other parking permit the council shall designate.

GF. "Residential parking permit" means a permit issued under this chapter which, when displayed upon a vehicle, as described herein, shall exempt said vehicle from parking time restrictions established pursuant to this chapter.

HG. "Local business parking permit" means a permit issued under this chapter which, when displayed upon a motor vehicle, shall exempt said vehicle from parking time restrictions established pursuant to this chapter.

IH. "Trapped resident" means: 1) any resident whose dwelling is on a block that may not legally opt-in because less than 80% of the block fronts are residentially zoned and

either: a) whose address is on a block front adjacent to and/or surrounded by block fronts that are already included in the RPP program; or b) whose address is within the general boundary of a designated RPP area; or 2) any resident whose dwelling abuts controlled curb parking and either: a) whose address is on a block front adjacent to and/or surrounded by RPP areas; or b) whose address is within the general boundary of a designated RPP area.

JJ. "Neighborhood-service community facility" means churches, schools and senior centers located wholly within the general boundary of an RPP designated area.

KJ. "Neighborhood-serving business and establishment" means any business or establishment located in a neighborhood commercial district as defined in the Zoning Ordinance Section Cl a, Cl b, Cl c, Cl b(E).

LK. "One-day visitor permit" means a parking permit issued pursuant to this chapter or an ordinance enacted pursuant to authority granted herein, which shall exempt the vehicle from parking time restrictions pursuant to this chapter, for the date indicated upon the face of said permit.

LM. "Two-week visitor permit" shall mean a parking permit issued pursuant to this chapter or an ordinance enacted pursuant to authority granted herein, which shall exempt the vehicle from parking time restrictions established pursuant to this chapter for a period of 14 consecutive calendar days, beginning upon the date indicated upon the face of said permit.

NM. "Motor vehicle" shall be an automobile, truck, motorcycle or other self-propelled form of transportation not in excess of 8,000 pounds gross weight and not in excess of 20 feet in length. A trailer, trailer coach, utility trailer, motor home/(RV), or any other type of vehicle as defined in the California Vehicle Code that is not self-propelled, is not eligible for an RPP permit.

ON. "Controlled curb parking" means any on-street parking with existing parking limitations, such as meters, time restrictions, red zone, etc.

PO. "Schools" shall mean any school or other place of learning providing a pre-school, elementary or secondary level of study, and which regularly employs a staff of at least 15 certificated persons regularly employed as a classroom teacher.

QP. "Senior centers" means the three senior centers affiliated with the City: North Berkeley Senior Center, South Berkeley Senior Center and the West Berkeley Senior Center.

Section 2. That Berkeley Municipal Code Section 14.72.050 is amended to read as follows:

14.72.050 Designation of a residential permit parking area.

A. There shall be two alternative processes by which City Council could consider any area for designation as a residential permit parking area:

1. Residents petition. The City Council shall consider for designation as a residential permit parking area any proposed area for which a petition has been submitted which meets and satisfies the following requirements:

a. Prior to obtaining signatures, neighborhood organizers shall consult with City staff to assure that the proposed area meets guidelines set in the administrative regulations for the establishment of permit parking boundaries.

b. The petition shall contain a description or a map showing the proposed residential permit parking area.

c. Said description or map shall be followed in the petition by a statement describing the residential permit parking program and the current residential permit fees.

d. The statement shall be followed by a signature, printed name, address, and date of signing of the application by a number of adult residents including at least 51% of the housing units within the area.

e. For applicants in areas zoned ~~Mixed Use-Residential~~ or Mixed Use-Light Industrial, a petition shall only be deemed valid if at least 51% of the housing units on each block ~~face-front~~ have an address that has a residential Assessor's Use Code.

f. All petitions shall be the same as the standard petition form developed by City staff. Any petition form different from the standard petition form shall be deemed invalid for the purposes of this chapter.

g. In the proposed residential permit parking area, at least 80% of the block fronts with unlimited on-street parking must be residentially zoned, and at a minimum, 75% of all unlimited on-street parking spaces within the proposed area must be occupied during any two one-hour periods between 10:00 a.m. and 4:00 p.m.

h. In areas zoned ~~Mixed Use-Residential~~ or Mixed Use-Light Industrial, at a minimum, 75% of all unlimited on-street parking spaces within the proposed area must be occupied during any two one-hour periods between 10:00 a.m. and 4:00 p.m.

2. City Council initiation. City Council shall consider for designation as a residential permit parking area any area for which the following requirements have been met:

a. City Council shall initiate the area as a residential permit parking area.

b. For areas zoned ~~Mixed Use-Residential~~ or Mixed Use-Light Industrial, Council shall only initiate the area as a residential permit parking area if at least 51% of the housing

units on each block face-front have an address that has a residential Assessor's Use Code.

c. In the proposed residential permit parking area at least 80% of the block fronts with unlimited on-street parking must be residentially zoned, and at a minimum, 75% of all unlimited on-street parking spaces within the proposed area must be occupied during any two one-hour periods between 10:00 a.m. and 4:00 p.m. or unlimited on-street parking is projected to be impacted by parking spillover from a more congested residential permit parking area.

d. In areas zoned Mixed Use-Residential or Mixed Use-Light Industrial, at a minimum, 75% of all unlimited on-street parking spaces within the proposed area must be occupied during any two one-hour periods between 10:00 a.m. and 4:00 p.m.

e. A notice of intent to establish permit parking shall be sent to all addresses within the proposed residential parking permit area.

B. Upon receipt by the City Council of a petition as described in subsection A.1 of this section, or after Council has initiated a residential permit parking area as described in subsection A.2 of this section, the Council shall:

1. Undertake or cause to be undertaken such surveys or studies which it deems necessary.

2. Cause to be drafted a resolution which would establish a residential permit parking area based upon the aforementioned proposal and studies, including all regulations and time restrictions determined by the Council to be reasonable and necessary in such area.

C. The Council shall thereafter conduct a public hearing on said draft resolution. Notice of the hearing shall be posted at least ten days prior to the hearing on all block fronts proposed to be included in the residential permit parking area. Following the hearing, the City Council may enact, amend or reject said draft resolution in any manner, including but not limited to, modification of boundaries of the proposed area and the restrictions imposed on such proposed area. In order to grant permit parking designation, Council shall find that the designation will not be detrimental to the health, safety, peace, morals, comfort and general welfare of persons residing in the area of designation. In reaching this decision, consideration shall be given to the residents' support for residential permit parking, the existing parking conditions, the expected effectiveness of residential permit parking in improving parking conditions, and the location and size of the residential permit parking area.

Section 3. That Berkeley Municipal Code Section 14.72.090 is amended to read as follows:

14.72.090 Residential parking permit.

A. The City Manager and/or his/her designee shall issue residential parking permits with a term not to exceed one year to motor vehicles which comply with the requirements set forth in this section.

1. No more than three (3) permits may be purchased for each residential address. Applicants may request a waiver if additional permits are needed.

2. In areas zoned Mixed Use-Residential (MU-R) or Mixed Use-Light Industrial (MULI), no more than two (2) permits may be purchased for each residential address. Applicants may request a waiver if additional permits are needed.

3. The City Traffic Engineer is authorized to issue such rules and regulations necessary to grant waivers to the annual permit limits.

B. A residential parking permit may be issued for a motor vehicle only upon application of the following person:

1. The applicant must demonstrate that he or she is currently a resident of the area for which the permit is to be issued; and

2. The applicant must demonstrate that he or she has ownership or continuing custody of the motor vehicle for which the permit is to be issued; and

3. Any motor vehicle to be issued a permit must have a vehicle registration indicating registration within the area for which the permit is to be issued.

C. A residential parking permit may in addition be issued for any vehicle in the area regularly utilized by a person who owns or leases commercial property and actively engages in business activity within the particular residential permit parking area. However, no more than one parking permit, or any greater number which the City Council may determine appropriate for the particular residential permit parking involved area, may be issued for each business establishment for a motor vehicle registered to or under the control of such a person.

D. A residential parking permit may be issued for any vehicle utilized in the area by a nonresidential nonbusiness enterprise, such as a church, school, or hospital, located wholly or partially within the particular residential permit parking area. However, no more than one parking permit, or any greater number which the City Council may determine appropriate for the particular permit parking area involved, may be issued for each such enterprise within each permit area for a motor vehicle registered to or under the control of such an enterprise.

E. Any person to whom a residential parking permit has been issued pursuant to this section shall be deemed a permit holder.

Section 4. Copies of this Ordinance shall be posted for two days prior to adoption in the display case located near the walkway in front of the Maudelle Shirek Building, 2134 Martin Luther King Jr. Way. Within 15 days of adoption, copies of this Ordinance shall be filed at each branch of the Berkeley Public Library and the title shall be published in a newspaper of general circulation.

RESOLUTION NO. ##,###-N.S.

FEES: RESIDENTIAL PREFERENTIAL PARKING PERMITS

WHEREAS, on February 27, 2018, Council adopted Resolution No. 68,344-N.S., establishing a revised fee schedule for parking permits for annual residential preferential parking; 1-Day Visitors, 2-Week Visitors, and annual in-home care, annual community-serving facility, annual merchant, 1-Day Senior Center, Semi-annual residential, and Semi-annual in-home care permits issued for the Residential Preferential Parking (RPP) Program, and rescinded Resolution No. 66,895-N.S.; and

WHEREAS, the current RPP Program is operating at an annual deficit of at least \$124,675; and

WHEREAS, staffing for the RPP Program will be increased to allow for enhanced enforcement activities in existing Program areas, a comprehensive overhaul of University of California, Berkeley football game day parking, and actively managed expansion of opt-in eligibility; and

WHEREAS, increased staffing will incur additional yearly costs, but will also deliver new citation revenue;

WHEREAS, it is necessary to increase RPP permit fees in order to operate the RPP Program as a cost-neutral program in accordance with Council Budget Policies.

NOW THEREFORE, BE IT RESOLVED by the Council of the City of Berkeley that the following fees for the RPP Program are hereby established:

Permit Type	Permit Fees
Annual Residential & In-Home Care	\$90.00
1-Day Visitor	\$4.00
14-Day Visitor	\$47.00
Semi-Annual Residential & In-Home Care	\$45.00
Community-Serving Facility	\$114.00
Merchant	\$253.00
1-Day Senior Center	\$1.00
Replacement of Annual, 14-Day, Community-Serving Facility, & Merchant Permits	\$21.00
Surcharge Per Additional Annual Residential Permit Over Maximum, Only If Waiver is Approved	\$100.00

BE IT FURTHER RESOLVED that these fees shall be effective June 1, 2019 for FY 2020 permit purchases and shall be deposited into the General Fund.

BE IT FURTHER RESOLVED that Resolution No. 68,344-N.S. is hereby rescinded effective June 1, 2019.

RESOLUTION NO. ##,###-N.S.

ESTABLISHING THE ZONES FOR “ENHANCED FINE AREAS” AND FOOTBALL GAME DAY VIOLATIONS, AND AUTHORIZING THE CITY MANAGER TO MAKE AN ANNUAL DETERMINATION AND NOTICE OF DATES ON WHICH FOOTBALL DAY VIOLATIONS WILL BE ISSUED

WHEREAS, City Council Resolution No. 65,813-N.S. restated the geographic area for football game day citations; and

WHEREAS, University of California football games attract a large number of visitors who drive to the game and park in residential neighborhoods to the north and south of campus, which typically makes it difficult for residents to find parking in close proximity to their homes on football game days; and

WHEREAS, current enforcement of the two-hour time limit for vehicles without a valid permit in portions of Residential Preferential Parking (RPP) Zones closest to the stadium is time intensive, reducing the ability of Parking Enforcement to maximize limited staff capacity on game days; and

WHEREAS, the permanent double parking fine program established by Resolution No. 63,800-N.S. has not deterred extended game day parking in portions of RPP Zones B and D, particularly in comparison to private off-street facilities in the vicinity of the stadium offering game day parking for up to \$100; and

WHEREAS, staff have confirmed with Parking Enforcement leadership that new “Enhanced Fine Areas,” in which vehicles without a valid RPP permit would not be permitted to park on football game days, would maximize limited enforcement capacity on football game days; and

WHEREAS, concurrent with this Resolution, the Council is considering adoption of another Resolution establishing a new schedule of parking violations and fines for parking violations, including in new “Enhanced Fine Areas;” and

WHEREAS, the existing “double parking fine” program would continue to be in effect on football game days in addition to the new “Enhanced Fine Areas;” and

WHEREAS, the schedule of parking violations and fines for parking violations may be revised in the future without affecting established zones for football day citations and Enhanced Fine Areas and the City Manager’s authorization to determine and provide public noticing of dates for these violations.

NOW THEREFORE, BE IT RESOLVED by the Council of the City of Berkeley that the established zone for the northerly Enhanced Fine Area is north to (not including) Cedar Street, west to (not including) Shattuck Avenue, south to Hearst Avenue, and east to the existing boundary of RPP Zones F and G.

BE IT FURTHER RESOLVED by the Council of the City of Berkeley that the established zone for the southerly Enhanced Fine Area is north to Dwight Way between Telegraph Avenue and Regent Street, north to Haste Street between Regent Street and Bowditch Street, north to Dwight Way between Bowditch Street and College Avenue; east to (but not including) College Avenue between Dwight Way and Parker Street; north to (but not including) Parker Street between College Avenue and Warring Street; east to Warring Street between Parker Street and Derby Street; north to Derby Street between Warring Street and Belrose Avenue; east to (but not including) Belrose Avenue/Claremont Boulevard between Derby Street and Russell Street; south to (but not including) Russell Street between Belrose Avenue/Claremont Boulevard and Telegraph Avenue; and west to (but not including) Telegraph Avenue between Russell Street and Dwight Way.

BE IT FURTHER RESOLVED by the Council of the City of Berkeley that the established zone for the easterly Enhanced Fine Area is north to the southern boundary of RPP Zone K between Channing Way and the Berkeley-Oakland city limits; east to the Berkeley-Oakland city limits; south to (but not including) Dwight Way between the Berkeley-Oakland city limits and Prospect Street; and west to (but not including) Prospect Street between Dwight Way and Channing Way.

BE IT FURTHER RESOLVED by the Council of the City of Berkeley that the established zone for football day citations is north to (not including) Cedar Street, south and east to the Berkeley-Oakland city limits, and west to Oxford and Fulton Streets (including both sides of these streets).

BE IT FURTHER RESOLVED by the Council of the City of Berkeley that the City Manager is directed to annually determine the dates during which there are higher parking fines for football day citations, and provide reasonable notice to the public of these dates.

BE IT FURTHER RESOLVED by the Council of the City of Berkeley that Resolution No. 65,813-N.S. is hereby rescinded.

RESOLUTION NO. ##,###-N.S.

ESTABLISHING A NEW SCHEDULE OF PARKING VIOLATIONS AND FINES FOR PARKING VIOLATIONS AND LATE PAYMENT PENALTIES; AND RESCINDING RESOLUTION NO. 68,466-N.S.

WHEREAS, the State of California Vehicle Code Section 40203.5 states “the schedule of parking penalties for parking violations and late payment penalties shall be established by the governing body of the jurisdiction where the notice of violation is issued;” and

WHEREAS, University of California football games attract a large number of visitors who drive to the game and park in residential neighborhoods to the north and south of campus, which typically makes it difficult for residents to find parking in close proximity to their homes on football game days; and

WHEREAS, concurrent with this Resolution, the Council is considering adoption of another Resolution establishing new “Enhanced Fine Areas” in portions of Residential Preferential Parking (RPP) Zones F and G north of campus, and in portions of RPP Zones B, D, and I south of campus, wherein vehicles without a valid RPP permit would not be permitted to park on football game days; and

WHEREAS, in May 2018, the City Council adopted Resolution No. 68,466-N.S. establishing a new schedule of fines for parking violations to enable the City to properly cite vehicles in violation of new laws managing parking for electric vehicles.

NOW THEREFORE, BE IT RESOLVED by the Council of the City of Berkeley that a new schedule of parking violations and late payment penalties is established, as set forth in Exhibit A, which includes fines and late penalties for violations of BMC Section 14.40.090 pertaining to parking restrictions in new “Enhanced Fine Areas” in effect on football game days only; and

BE IT FURTHER RESOLVED that Resolution No. 68,466-N.S. is hereby rescinded.

Exhibits

- A: Schedule of Fines and Late Payment Penalties for Parking Violations
- B: List of New Parking Violations

Exhibit A: Schedule of Fines and Late Payment Penalties for Parking Violations

Code	Section	Violation Description (For citations issued to a vehicle) FD = Football Game Days 9 a.m. to 11 p.m. FD fines = 50% higher on most violations & 100% higher for violations in RPP Zones A, B, D	Fine Amount	On Day 28 +\$30	On Day 47 +\$50
BMC	6.24.020	Off-St Rsrv Pkg No Permit Displayed	\$48	\$78	\$128
BMC	6.24.020	FD Off-St Rsrv Pkg No Permit Displayed			
BMC	6.24.020	Non-Electric Vehicle Parked in Electric Vehicle Space	\$35	\$65	\$115
BMC	6.24.060	Electric Vehicle Exceeding EV Parking Space Time Limit	\$30	\$60	\$110
BMC	6.24.020	Electric Vehicle Not Actively Charging in EV Parking Space	\$35	\$65	\$115
BMC	6.24.093	P&D Dispensing Mach Tkt Not Displayed	\$43	\$73	\$123
BMC	6.24.093	FD P&D Dispensing Mach Tkt Not Displayed	\$65	\$95	\$145
BMC	6.24.096	Improper Display of P&D Disp Mach Tkt	\$43	\$73	\$123
BMC	6.24.096	FD Improper Display of P&D Disp Mach Tkt	\$65	\$95	\$145
BMC	6.24.100 B	P&D Station Expired Time	\$43	\$73	\$123
BMC	6.24.100 B	FD P&D Station Expired Time	\$65	\$95	\$145
BMC	6.24.103 B	Time Limits Enforced at Inoperable P&D Sta	\$43	\$73	\$123
BMC	6.24.103 B	FD Time Limits Enforced at Inoperable P&D Sta	\$65	\$95	\$145
BMC	6.24.130	Off-St Facility: Motorcycle Zone Only	\$48	\$78	\$128
BMC	6.24.130	Off-St Facility: Pkg Outside Markings	\$48	\$78	\$128
BMC	6.24.130	FD Off-St Facility: Pkg Outside Markings	\$72	\$102	\$152
BMC	6.24.130	Off-St Facility: Disabled Zone	\$288	\$318	\$368
BMC	6.24.130	FD Off-St Facility: Disabled Zone	\$288	\$318	\$368
BMC	6.24.130	Off-St Facility: Restricted Load Zone	\$48	\$78	\$128
BMC	6.24.130	FD Off-St Facility: Restricted Load Zone	\$72	\$102	\$152
BMC	6.24.130	Off-St Facility: Unmarked Space	\$48	\$78	\$128
BMC	6.24.130	FD Off-St Facility: Unmarked Space	\$72	\$102	\$152
BMC	6.24.140	Off-St Facility: Backed-In	\$48	\$78	\$128
BMC	9.52.140	Unattended Taxi Over 5 Min	\$91	\$121	\$171
BMC	13.52.040	Unauth Pkg on Private Property	\$41	\$71	\$121
BMC	14.24.070	Unauth Vehicle on Private Prop	\$64	\$94	\$144
BMC	14.36.030 A	No Parking on Divisnl Islands	\$55	\$85	\$135
BMC	14.36.030 A	FD No Parking on Divisnl Islands	\$83	\$113	\$163
BMC	14.36.030 C	No Parking Zone (Sign Posted)	\$64	\$94	\$144
BMC	14.36.030 C	FD No Parking Zone (Sign Posted)	\$96	\$126	\$176
BMC	14.36.030 C	No Parking Zone (Red Curb)	\$64	\$94	\$144
BMC	14.36.030 C	FD No Parking Zone (Red Curb)	\$96	\$126	\$176

Code	Section	Violation Description (For citations issued to a vehicle) FD = Football Game Days 9 a.m. to 11 p.m. FD fines = 50% higher on most violations & 100% higher for violations in RPP Zones A, B, D	Fine Amount	On Day 28 +\$30	On Day 47 +\$50
BMC	14.36.030 D	No Parking Street Sweeping (sign)	\$49	\$79	\$129
BMC	14.36.030 E	No Parking on Railroad Tracks	\$64	\$94	\$144
BMC	14.36.030 F	Hazard Obstructing Traffic	\$64	\$94	\$144
BMC	14.36.030 F	FD Hazard Obstructing Traffic	\$96	\$126	\$176
BMC	14.36.030 G	Construct: No Permit on Dashboard	\$64	\$94	\$144
BMC	14.36.030 G	FD Construct: No Permit on Dashboard	\$96	\$126	\$176
BMC	14.36.050	On Street 72 or More Consec hrs	\$60	\$90	\$140
BMC	14.36.060	Repair Vehicle on Street	\$52	\$82	\$132
BMC	14.36.080	Vehicle Parked in School Zone	\$51	\$81	\$131
BMC	14.36.090	Pkg on Grade Brake/Block Wheels	\$55	\$85	\$135
BMC	14.36.110	Emerg Prkg w/o Permit (Tow CVC 22651)	\$52	\$82	\$132
BMC	14.40.010	3 min Limit Zone Overtime	\$43	\$73	\$123
BMC	14.40.010	FD 3 min Limit Zone Overtime	\$65	\$95	\$145
BMC	14.40.010	5 min Limit Zone Overtime	\$43	\$73	\$123
BMC	14.40.010	FD 5 min Limit Zone Overtime	\$65	\$95	\$145
BMC	14.40.010	10 min Limit Zone Overtime	\$43	\$73	\$123
BMC	14.40.010	FD 10 min Limit Zone Overtime	\$65	\$95	\$145
BMC	14.40.010	12 min Limit Zone Overtime	\$43	\$73	\$123
BMC	14.40.010	15 min Limit Zone Overtime	\$43	\$73	\$123
BMC	14.40.010	24 min Limit Zone Overtime	\$43	\$73	\$123
BMC	14.40.010	FD 24 min Limit Zone Overtime	\$65	\$95	\$145
BMC	14.40.020	30 min Limit Zone Overtime	\$43	\$73	\$123
BMC	14.40.020	FD 30 min Limit Zone Overtime	\$65	\$95	\$145
BMC	14.40.030	1 hr Limit Zone Overtime	\$43	\$73	\$123
BMC	14.40.030	FD 1 hr Limit Zone Overtime	\$65	\$95	\$145
BMC	14.40.030	Faulty Meter Over 1 hr Limit	\$43	\$73	\$123
BMC	14.40.040	2 hr Limit Zone Overtime	\$43	\$73	\$123
BMC	14.40.040	FD 2 hr Limit Zone Overtime	\$65	\$95	\$145
BMC	14.40.040	Faulty Meter Over 2 hr Limit	\$43	\$73	\$123
BMC	14.40.050 A	Parallel Pkg Veh Outside Markers	\$48	\$78	\$128
BMC	14.40.050 B	Veh Facing Wrong Way 1-way St	\$48	\$78	\$128
BMC	14.40.050 B	FD Veh Facing Wrong Way 1-way St	\$72	\$102	\$152
BMC	14.40.050 B	Pkg Over 18" from Curb 1-way St	\$51	\$81	\$131
BMC	14.40.050 B	FD Pkg Over 18" fr Curb 1-way St	\$77	\$107	\$157
BMC	14.40.060 A	Diagonal Pkg Veh Outside Markers	\$51	\$81	\$131
BMC	14.40.060 B	Diagonal Pkg FW Over 6" from Curb	\$51	\$81	\$131
BMC	14.40.070 A	No Stopping 4-6pm (Tow CVC 22651)	\$64	\$94	\$144
BMC	14.40.070 A	FD No Stopping 4-6pm (Tow CVC 22651)	\$96	\$126	\$176
BMC	14.40.070 A	No Stopping 7-9am (Tow CVC 22651)	\$64	\$94	\$144

Code	Section	Violation Description (For citations issued to a vehicle) FD = Football Game Days 9 a.m. to 11 p.m. FD fines = 50% higher on most violations & 100% higher for violations in RPP Zones A, B, D	Fine Amount	On Day 28 +\$30	On Day 47 +\$50
BMC	14.40.070 A	No Stopping 9pm-6am (Tow CVC 22651)	\$64	\$94	\$144
BMC	14.40.070 A	Posted No Stopping Tow Away	\$64	\$94	\$144
BMC	14.40.090	RPP Zone No RPP Permit Displayed	\$49	\$79	\$129
BMC	14.40.090	FD RPP Zone A,B,D No Permit Dsply	\$98	\$128	\$178
BMC	14.40.090	RPP Zone K No Permit Displayed	\$57	\$87	\$137
BMC	14.40.090	RPP Zone RPP Permit Expired	\$49	\$79	\$129
BMC	14.40.090	FD RPP Zone A,B,D Permit Expired	\$98	\$128	\$178
BMC	14.40.090	RPP Zone Permit Improper Display	\$49	\$79	\$129
BMC	14.40.090	FD RPP A,B,D Permit Impropr Dsply	\$98	\$128	\$178
BMC	14.40.090	No RPP Permit Displayed in Enhanced Fine Area (Football Game Days)	\$225	\$255	\$305
BMC	14.40.130	Pkg/Standing in City Lots/Spaces	\$55	\$85	\$135
BMC	14.40.130 A	City Lot No Permit Displayed	\$57	\$87	\$137
BMC	14.40.130 C	Reserved Pkg No Permit Displayed	\$49	\$79	\$129
BMC	14.40.130 E	Reserved City Hall Pkg Towable	\$64	\$94	\$144
BMC	14.40.150 A	Car Parking in Motorcycle Area	\$51	\$81	\$131
BMC	14.40.150 B	Motorcycle Zone Overtime	\$51	\$81	\$131
BMC	14.40.160	DbI-Pkd Commer Vehicle Center St	\$60	\$90	\$140
BMC	14.44.020 B	Commer Zone No Permit (yellow)	\$57	\$87	\$137
BMC	14.44.020 B	FD Commer Zone No Permit (yellow)	\$86	\$116	\$166
BMC	14.44.020 A	Commercial Zone Overtime	\$57	\$87	\$137
BMC	14.44.020 A	FD Commercial Zone Overtime	\$86	\$116	\$166
BMC	14.44.030	Passenger Load Zone (white curb)	\$57	\$87	\$137
BMC	14.44.030	FD Passgr Load Zone (white curb}	\$86	\$116	\$166
BMC	14.44.040	No Stopping Bicycle Zone	\$55	\$85	\$135
BMC	14.44.040	FD No Stopping Bicycle Zone	\$83	\$113	\$163
BMC	14.44.050	Special Passenger Load Zone only	\$57	\$87	\$137
BMC	14.44.060	Parking in Coach (bus) Zone	\$64	\$94	\$144
BMC	14.44.060	FD Parking in Coach (bus) Zone	\$96	\$126	\$176
BMC	14.44.070	Unauthorized Use of Funeral Zone	\$51	\$81	\$131
BMC	14.44.080	Taxicab Parking Only	\$51	\$81	\$131
BMC	14.44.080	Unauthorized Taxicab Stand Pkg	\$51	\$81	\$131
BMC	14.46.040 B	Non-Electric Vehicle Parked in EV Space	\$49	\$79	\$129
BMC	14.46.050 B	Electric Vehicle Exceeding EV Space Time Limit	\$43	\$73	\$123
BMC	14.46.050 C	Electric Vehicle Not Actively Charging in EV Space	\$43	\$73	\$123
BMC	14.52.050 A	Meter Street: Expired Meter	\$43	\$73	\$123
BMC	14.52.050 A	FD Meter Street: Expired Meter	\$65	\$95	\$145
BMC	14.52.050 B	Pay & Display Station Expired Time	\$43	\$73	\$123

Code	Section	Violation Description (For citations issued to a vehicle) FD = Football Game Days 9 a.m. to 11 p.m. FD fines = 50% higher on most violations & 100% higher for violations in RPP Zones A, B, D	Fine Amount	On Day 28 +\$30	On Day 47 +\$50
BMC	14.52.050 B	FD Pay & Display Sta Expired Time	\$65	\$95	\$145
BMC	14.52.060 A	Meter St: Extending Meter Time	\$43	\$73	\$123
BMC	14.52.060 A	FD Meter St: Extending Meter Time	\$65	\$95	\$145
BMC	14.52.060 B	Pay & Display Station Extend Time	\$43	\$73	\$123
BMC	14.52.060 B	FD Pay & Display Sta Extend Time	\$65	\$95	\$145
BMC	14.52.063	P&D Dispensing Mach Tkt Not Displayed	\$43	\$73	\$123
BMC	14.52.063	FD P&D Dispens Mach Tkt Not Displayed	\$65	\$95	\$145
BMC	14.52.066	Improper Display of P&D Disp Mach Tkt	\$43	\$73	\$123
BMC	14.52.066	FD Improper Display of P&D Disp Mach Tkt	\$65	\$95	\$145
CVC	4000	No Evidence Current Registration	\$50	\$80	\$130
CVC	4000	Expired Registration	\$50	\$80	\$130
CVC	4461 B	Improper Lending of DP Placard or Plate	\$550	\$580	\$630
CVC	4461 C	Improper Display of DP Placard or Plate	\$550	\$580	\$630
CVC	4461 D	Improper Use of DP Placard or Plate	\$550	\$580	\$630
CVC	4463 C	Use of Forged, Counterfeit, or False DP Placard or Plate	\$550	\$580	\$630
CVC	5200	Missing License Plates	\$25	\$55	\$105
CVC	5201	Lic Plates Improperly Positioned	\$25	\$55	\$105
CVC	5202	Hanging/Detached License Plate	\$25	\$55	\$105
CVC	5204 A	Expired Tags (read back)	\$25	\$55	\$105
CVC	5204 A	Missing Tags	\$25	\$55	\$105
CVC	21113 A	Parking on Public Grounds	\$54	\$84	\$134
CVC	21211 B	Vehicle Blocking Bicycle Lane	\$54	\$84	\$134
CVC	21718	Parking on Freeway	\$54	\$84	\$134
CVC	22500 A	Parking in an Intersection	\$60	\$90	\$140
CVC	22500 A	FD Parking in an Intersection	\$86	\$116	\$166
CVC	22500 B	Parking in Crosswalk	\$60	\$90	\$140
CVC	22500 B	FD Parking in Crosswalk	\$90	\$120	\$170
CVC	22500 C	Parking in Safety Zone	\$60	\$90	\$140
CVC	22500 C	FD Parking in Safety Zone	\$90	\$120	\$170
CVC	22500 D	Parking within 15' of Fire Station	\$60	\$90	\$140
CVC	22500 D	FD Parking within 15' of Fire Station	\$90	\$120	\$170
CVC	22500 E	Parking in Driveway	\$60	\$90	\$140
CVC	22500 E	FD Parking in Driveway	\$90	\$120	\$170
CVC	22500 F	Parking On/Across Sidewalk	\$60	\$90	\$140
CVC	22500 F	FD Parking On/Across Sidewalk	\$90	\$120	\$170
CVC	22500 G	Parking Construction No Permit	\$60	\$90	\$140
CVC	22500 G	FD Parking Construction No Permit	\$90	\$120	\$170
CVC	22500 H	Double-Parked	\$60	\$90	\$140

Code	Section	Violation Description (For citations issued to a vehicle) FD = Football Game Days 9 a.m. to 11 p.m. FD fines = 50% higher on most violations & 100% higher for violations in RPP Zones A, B, D	Fine Amount	On Day 28 +\$30	On Day 47 +\$50
CVC	22500 H	FD Double-Parked	\$90	\$120	\$170
CVC	22500 I	Parking/Stopping in Coach Zone	\$263	\$293	\$343
CVC	22500 I	FD Parking/Stopping in Coach Zone	\$263	\$293	\$343
CVC	22500 J	Parking in Tunnel	\$54	\$84	\$134
CVC	22500 K	Parking on Bridge	\$54	\$84	\$134
CVC	22500 L	Blocking Disabled Ramp	\$288	\$318	\$368
CVC	22502 A	Parking Over 18" from Curb 2-Way St	\$69	\$99	\$149
CVC	22502 A	FD Parking Over 18" from Curb 2-Way St	\$104	\$134	\$184
CVC	22503 E	Parking Over 10" from Curb 1-Way St	\$58	\$88	\$138
CVC	22507.8 A	Parking in Disabled Zone	\$317	\$347	\$397
CVC	22507.8 B	Obstructing Access Disabled Zone	\$317	\$347	\$397
CVC	22507.8 B	FD Obstructing Access Disabled Zone	\$317	\$347	\$397
CVC	22514 a	Parking within 15' of Fire Hydrant	\$78	\$108	\$158
CVC	22514 a	FD Parking within 15' of Fire Hydrant	\$117	\$147	\$197
CVC	22521	Parking within 7.5' of Railroad Tracks	\$54	\$84	\$134
CVC	22522	Parking within 3' of Wheelchair Ramp	\$317	\$347	\$397
CVC	22522	FD Parking within 3' of Wheelchair Ramp	\$317	\$347	\$397
CVC	22523 a	Abandon Vehicle on Highway	\$168	\$198	\$248
CVC	22523 b	Abandon Vehicle on Pub/Prvt Prop	\$168	\$198	\$248

Note: In addition to citation placed on vehicle, "Notice of Violation" is mailed to registered owner seven (7) days after citation and indicated when the fine penalty increases will occur: On Day 28 after citation issuance, the fine increases by \$30. If payment is not received within 45 days after issuance, on Day 47, the fine increases by an additional \$50.

Exhibit B: List New Parking Violations

Code	Section	Violation Description (For citations issued to a vehicle) FD = Football Game Days 9 a.m. to 11 p.m. FD fines = 50% higher on most violations & 100% higher for violations in RPP Zones A, B, D	Fine Amount	On Day 28 +\$30	On Day 47 +\$50
BMC	14.40.090	No RPP Permit Displayed in Enhanced Fine Area (Football Game Days)	\$225	\$255	\$305

**NOTICE OF PUBLIC HEARING
BERKELEY CITY COUNCIL**

FEES: RESIDENTIAL PREFERENTIAL PARKING PERMITS

Notice is hereby given by the City Council of the City of Berkeley that a public hearing will be conducted by said city council of the City of Berkeley at which time and place all persons may attend and be heard upon the following:

The Department of Public Works is proposing to increase the cost of annual Residential Preferential Parking (RPP) permits, effective June 1, 2019, for permits purchased for FY 2020, as summarized below:

Permit Type	Current Fee	Proposed Fee
Annual Residential & In-Home Care	\$66.00	\$90.00
1-Day Visitor	\$3.00	\$4.00
14-Day Visitor	\$34.00	\$47.00
Semi-Annual Residential & In-Home Care	\$33.00	\$45.00
Community-Serving Facility	\$83.00	\$114.00
Merchant	\$185.00	\$253.00
1-Day Senior Center	\$1.00	\$1.00
Replacement of Annual, 14-Day, Community-Serving Facility, & Merchant Permits	\$15.00	\$21.00
Surcharge Per Additional Annual Residential Permit Over Maximum, If Waiver Approved	\$100.00	\$100.00

The hearing will be held on Tuesday, May 14, 2019 at 6:00 p.m. in the School District Board Room, 1231 Addison Street.

For further information, please contact Farid Javandel, Transportation Division Manager, at (510) 981-7061.

A copy of the agenda material for this hearing will be available on the City's website at www.CityofBerkeley.info as of May 2, 2019.

Written comments should be mailed or delivered directly to the City Clerk, 2180 Milvia Street, Berkeley, CA 94704, in order to ensure delivery to all Councilmembers and inclusion in the agenda packet.

Communications to the Berkeley City Council are public record and will become part of the City's electronic records, which are accessible through the City's website. **Please note: e-mail addresses, names, addresses, and other contact information are not required, but if included in any communication to the City Council, will become**

part of the public record. If you do not want your e-mail address or any other contact information to be made public, you may deliver communications via U.S. Postal Service or in person to the City Clerk. If you do not want your contact information included in the public record, please do not include that information in your communication. Please contact the City Clerk at 981-6900 or clerk@cityofberkeley.info for further information.

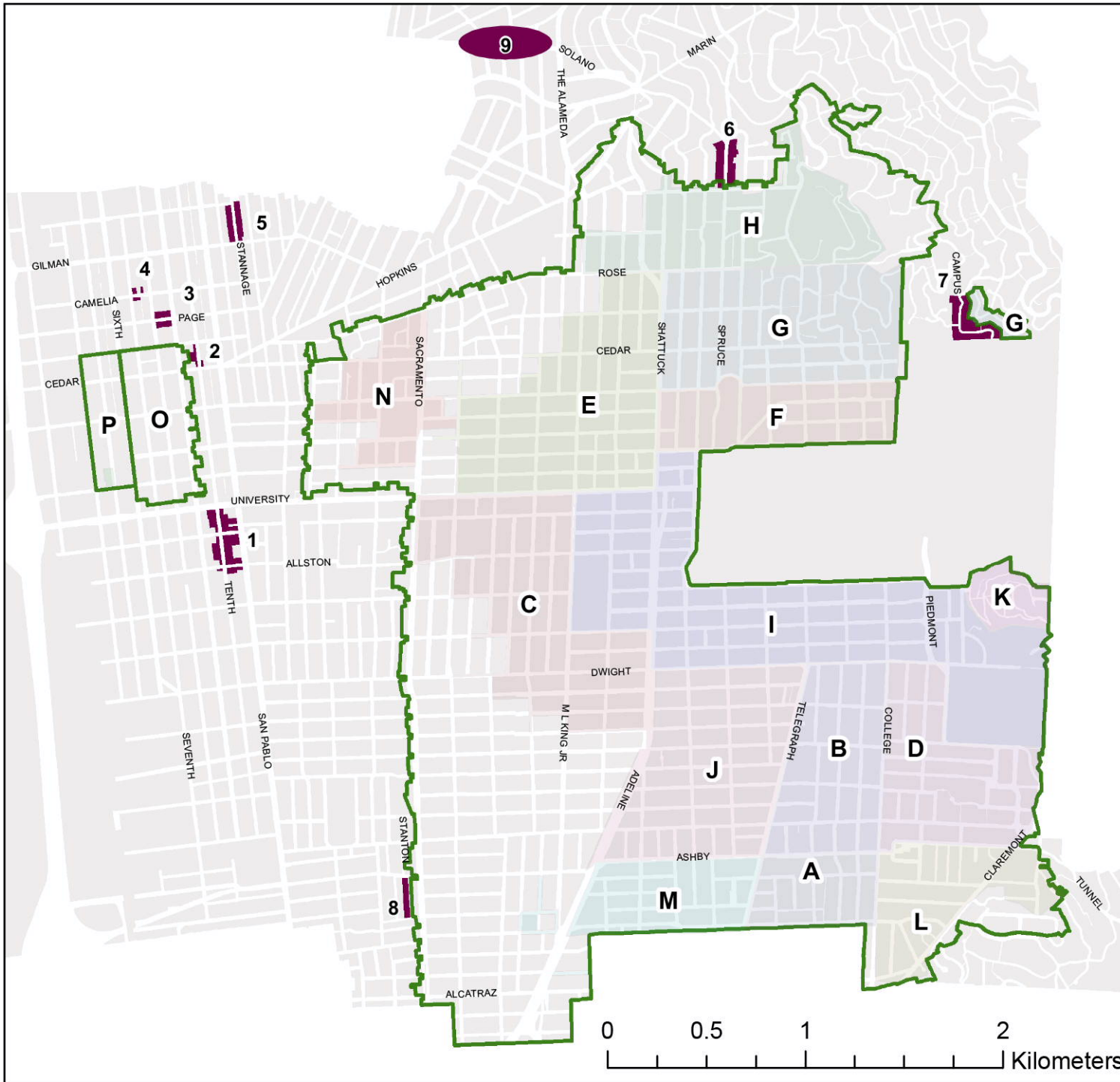
If you challenge the above in court, you may be limited to raising only those issues you or someone else raised at the public hearing described in this notice, or in written correspondence delivered to the City of Berkeley at, or prior to, the public hearing. Background information concerning this proposal will be available at the City Clerk Department and posted on the City of Berkeley webpage at least 12 days prior to the public hearing.

Published: May 3 and May 10, 2019 – The Berkeley Voice

~~~~~  
I hereby certify that the Notice for this Public Hearing of the Berkeley City Council was posted at the display case located near the walkway in front of the Maudelle Shirek Building, 2134 Martin Luther King Jr. Way, as well as on the City's website, on May 2, 2019.

---

Mark Numainville, City Clerk



# ATTACHMENT 6

## EXISTING ELIGIBILITY AND INELIGIBLE OPT-IN REQUESTS

- Existing RPP Area Extents
- Current Eligibility Boundary
- Out of Area Opt-In Requests

FY 2019 Requests

1. 10th between University and Allston with adjacent side streets
2. 10th between Jones and Cedar
3. Page between 8th and 9th
4. Camelia between 7th and 8th

Requests Prior to FY 2019

5. Stannage between Gilman and Harrison
6. Spruce between Los Angeles to Eunice
7. Campus between Avenida and LBL Campus
8. Stanton between Ashby and Prince
9. Multiple requests from Solano neighborhood

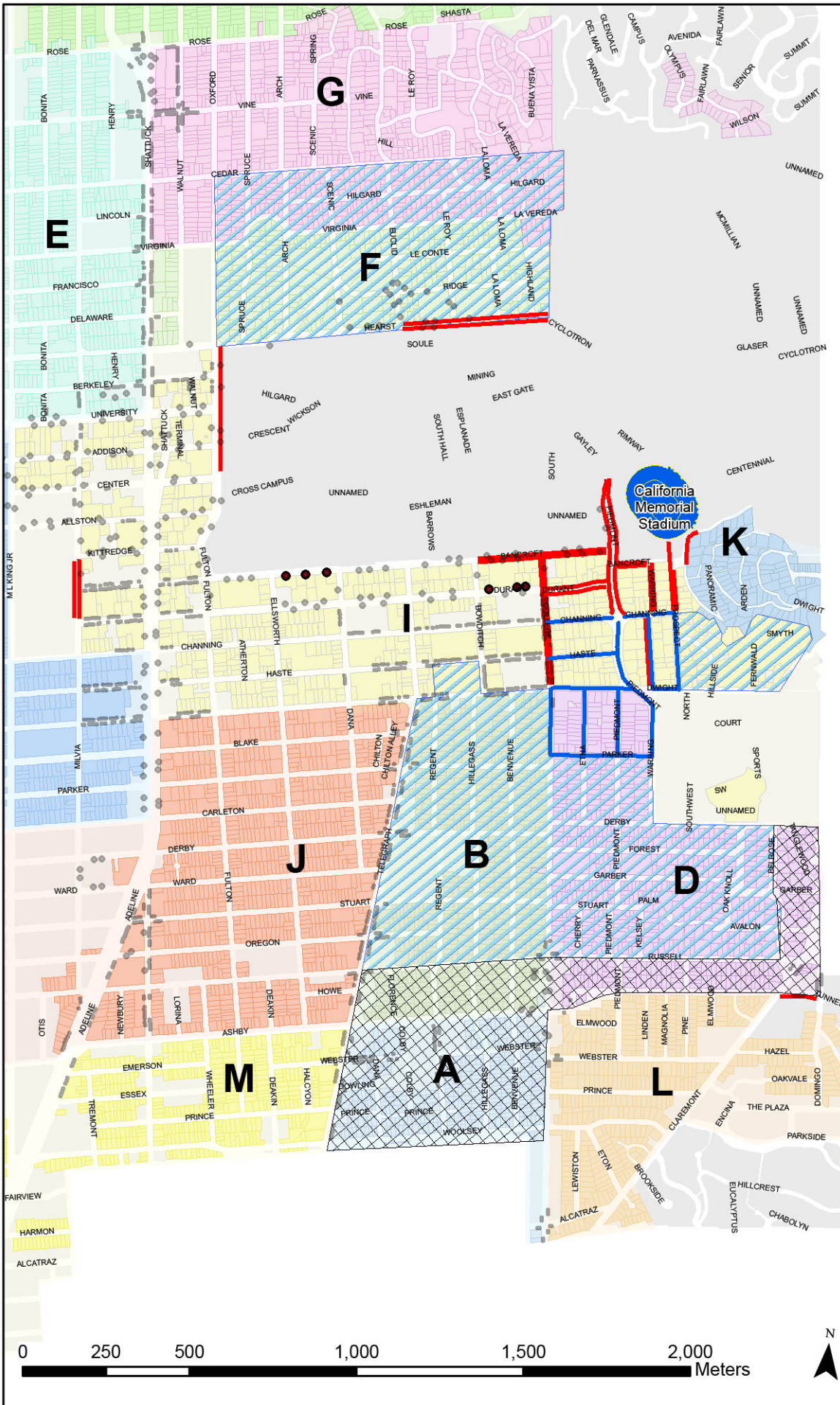
This map is for reference purposes only.

Care was taken in the creation of this map, but it is provided "AS IS". Please contact the City of Berkeley to verify map information or to report any errors.  
March 20, 2019



**CITY OF BERKELEY**  
 Transportation Division  
 1947 Center Street  
 Berkeley CA 94704

# ATTACHMENT 7: PROPOSED 2019 UC BERKELEY FOOTBALL GAME DAY PARKING RESTRICTIONS



- Existing Restrictions**
- Single Space Meters (9AM-6PM)
  - Pay And Display Meters (9AM-6PM)
  - Meters With Additional No Parking Restrictions
  - Double Fine Area (200%)
  - Existing Football Tow Zones
- Proposed Restrictions**
- Enhanced Fine Area for Non-Permit Holders (\$225)
  - Proposed New Tow Zone For Non-Permit Holders

This map is for reference purposes only.

Care was taken in the creation of this map, but it is provided "AS IS". Please contact the City of Berkeley to verify map information or to report any errors.  
March 20, 2019

