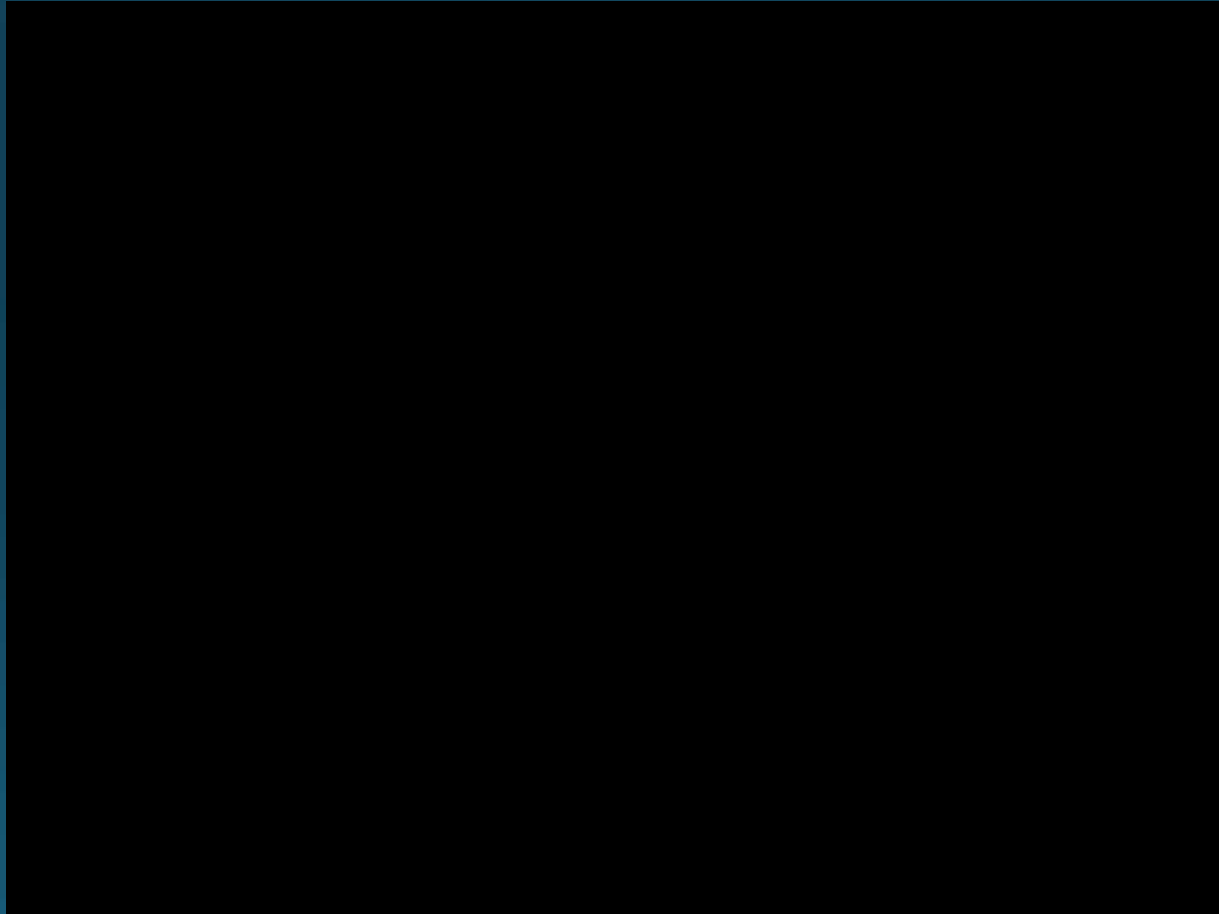


How about this?



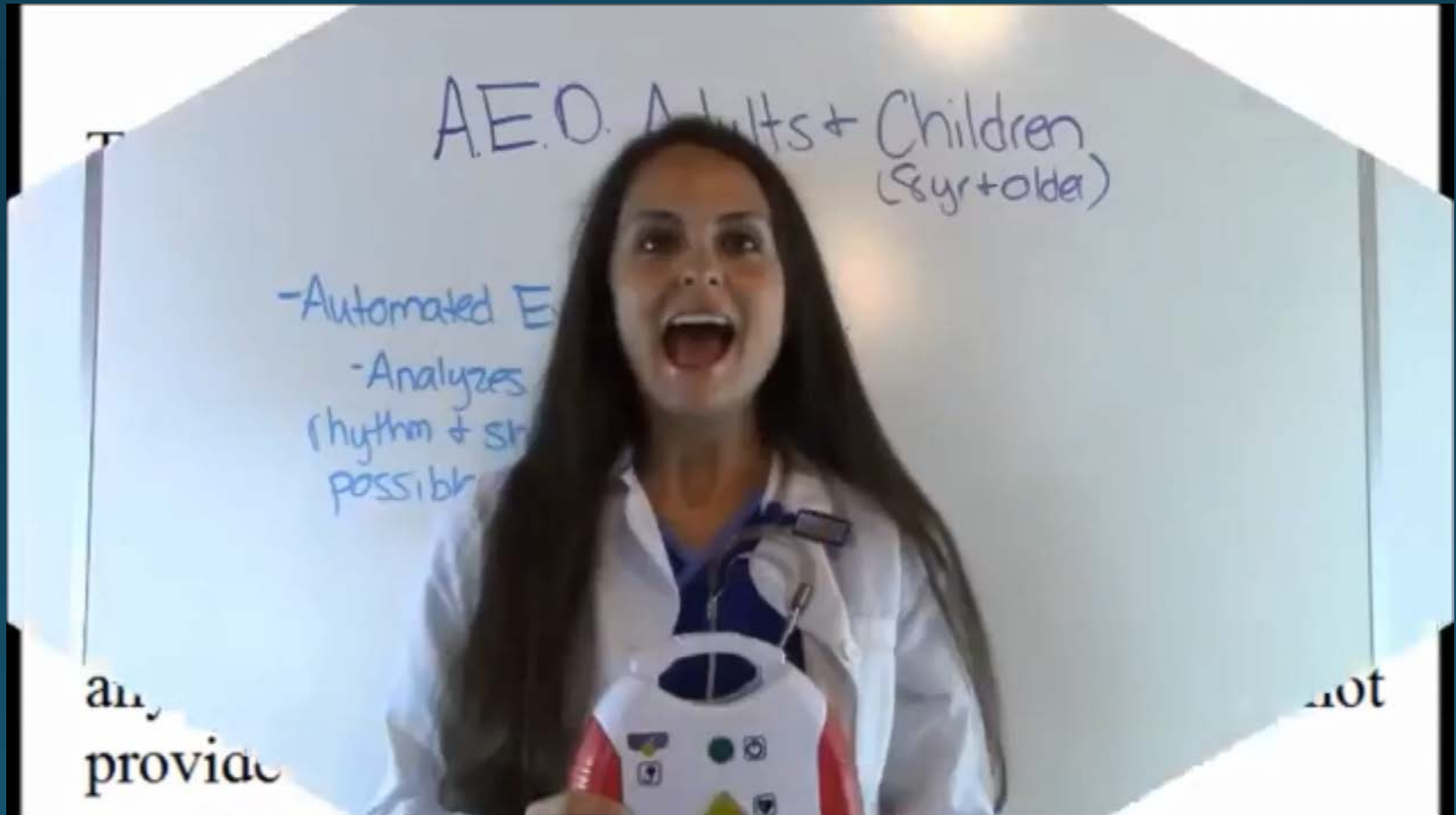
Awesome CPR = Save!



AED

- Placed in the PSB and other city buildings
- Also many public facilities
- Newly required skill for Peace officer first responders

YouTube: Registered Nurse RN edited for length and clarity



CPR Practice

Choking - The universal sign of a choking person!



For choking victims...



First Aid: Trauma and Medical Treatment

Why is this important?

- ▶ It can save your life, your partner's life, or a citizen's life
- ▶ Liability
 - ▶ Kayla Moore lawsuit
 - ▶ DUI or CVA? Lawsuit!

Also: Show BFD who the real heroes are



New required skills

- ▶ AED
- ▶ Bleeding control – TQs, hemo, chest seals
- ▶ C-SPINE – (although BFD EMS Captain McPartland says it's pointless)
- ▶ Medication admin. or assist



Altered Mental Status and Medications

Causes of Altered Mental Status (AMS) also called Altered Level of Consciousness (ALOC)

- ▶ Psychiatric conditions (not common in Berkeley, don't worry about it)
- ▶ Drugs or medications
- ▶ Diabetic Emergencies
- ▶ Epilepsy and Seizures
- ▶ AEIOU-TIPS!

Basically, lots of things can cause AMS

	Component(s) of acronym	Examples
A	Alcohol/Abuse of substances	Alcohol or drug intoxication ^[3]
	Acidosis	Diabetic ketoacidosis; ^[1] hypoventilation due to COPD, asthmatic airway obstruction, or neuromuscular disease ^[2]
E	Ecstasy	
	Environmental	Hypothermia; hyperthermia ^[7]
	Epilepsy	Epileptic seizure (or seizure for any other reason) ^[4]
	Electrolytes	Hyponatremia; hypernatremia; hypocalcemia; hypercalcemia ^[6]
	Encephalopathy	Wernicke's encephalopathy; Chronic traumatic encephalopathy (CTE) ^[6]
	Endocrine disease	Adrenal insufficiency; thyroid disease ^[2]
I	Infection	Encephalitis, meningitis, meningoencephalitis; sepsis ^[1]
O	Overdose	Prescription or non-prescription drug overdose ^{[1][3]}
	Oxygen deficiency	Hypoxia due to pulmonary edema or tension pneumothorax; hypoxic brain injury due to cardiac arrest ^[4]
U	Underdose	Insufficient dose of prescription medications
	Uremia	Excess urea in the blood due to kidney failure, congestive heart failure, urinary obstruction ^[6]
T	Trauma	Concussion; traumatic brain injury; increased intracranial pressure due to epidural hemorrhage ^[7]
	Tumor	Brain tumor; metastasis to the brain; paraneoplastic syndrome ^[5]
I	Insulin	Hypoglycemia; ^[7] hyperosmolar hyperglycemic state ^[6]
P	Psychogenic	Psychosis; pseudoseizure; conversion disorder ^[5]
	Poisons	Carbon monoxide poisoning; lead poisoning; iron poisoning ^[5]
S	Stroke	Hemorrhagic stroke due to arteriovenous malformation (AVM) ^[5]
	Shock	Neurogenic shock due to spinal cord injury; cardiogenic shock due to myocardial infarction ^[6]

Ok, but seriously...

- ▶ We are basically doing 'awareness only' a.k.a. just mentioning it, training of psychological emergencies in this course, BECAUSE we have all had at least the 8 hour CIT, and lots of folks the 40 hour CIT. Plus all of our OTJ training. So we are probably very well trained on recognizing psychological emergencies.

Assisting Admin. Of Oral Glucose

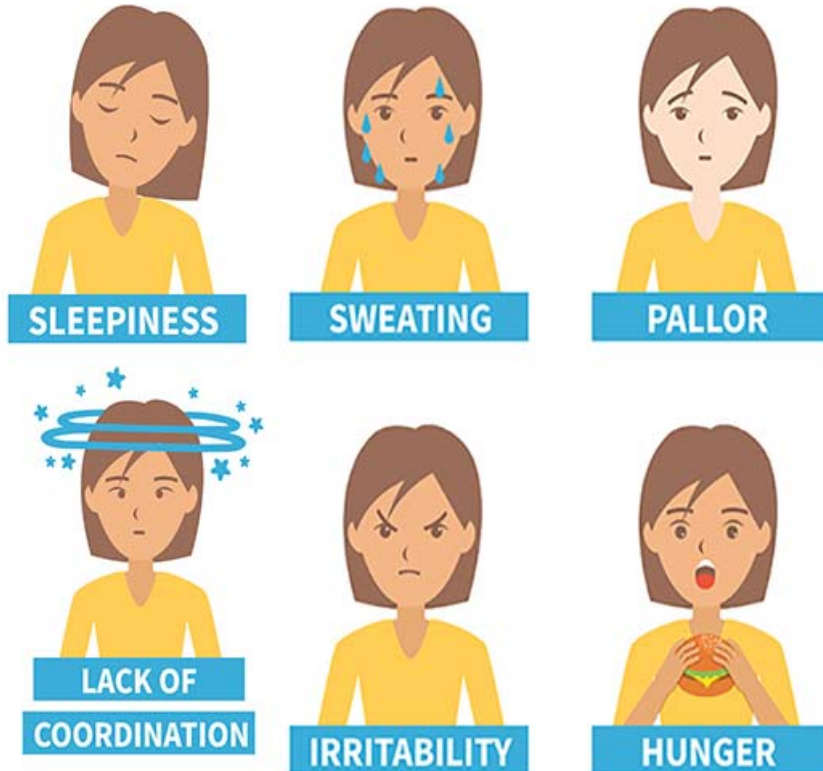


Diabetic Emergencies

- ▶ Hypoglycemia – LOW blood sugar
- ▶ Vs
- ▶ Hyperglycemia – High Blood sugar

What are the signs and symptoms

HYPOGLYCEMIA



HYPERGLYCEMIA

