

Commercial Loading Zones

WHAT are commercial loading zones?

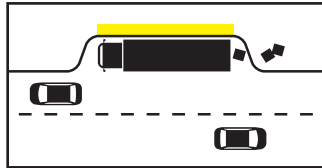
Commercial loading zones are curb areas reserved for businesses to actively load and unload merchandise or materials, as well as general vehicles to pick up and drop off passengers.

WHERE are commercial loading zones?



Yellow Curbs

Unless posted otherwise







WHEN are rules enforced?

7 AM - 6 PM
Monday - Saturday

Unless posted otherwise

WHO can park at commercial loading zones?

Commercial Vehicles with either...			General
<p>City of Berkeley business license decal affixed to the left rear bumper</p> 	<p>Commercial license plates issued by the Department of Motor Vehicles</p> 	<p>Logo(s) or lettering indicating its use for commercial purposes</p> 	<p>Passenger pick-off or drop-off</p> 
<p>20 Minute Limit Must be actively loading or unloading merchandise or materials.</p>			<p>3 Minute Limit Driver must be present in the vehicle.</p>

HOW to obtain a City of Berkeley business license decal?

Call 311 to request more information. Businesses may request up to four (4) commercial vehicle loading zone decals on the City's annual business license application or renewal form. Business license decals expire each year, so a business must obtain new decals each time they renew their business license.

This material is available in alternative formats upon request. Alternative formats include audio-format, braille, large print, electronic text, etc. Please contact the Disability Services Specialist, Dominika Bednarska (DBednarska@cityofberkeley.info | 510-981-6418), and allow 7-10 days for the production of the material in an alternative format.



Commercial Loading Zones



EXAMPLES of who can park at commercial loading zones?

Commercial Vehicles with either...

City of Berkeley business license
decal affixed to
the left rear
bumper



Commercial license plates issued by the Department of Motor Vehicles



Logo(s) or lettering indicating its use for commercial purposes



General

Passenger pick-off or drop-off



20

Minute Limit

Must be actively loading or unloading merchandise or materials.

3

Minute Limit

Driver must be present in the vehicle.